



Quarterly Compliance Report

1st April to 30th June 2015

Prepared by:

Penrice Quarry & Mineral

256 Penrice Road, Penrice SA 5353

Telephone: 08 8563 8800 Facsimile: 08 8564 3358 Email: mclose@southernquarries.com.au

17th August 2015

Contents

1. Introduction
2. Operational Update and Rehabilitation
3. Environmental Management
 - 3.1 Dust Management
 - 3.2 Drag Out
 - 3.3 Noise Monitoring
 - 3.4 Blast Monitoring
 - 3.5 Visual Amenity
 - 3.6 Groundwater
 - 3.7 Storm water and erosion
4. Mine Planning

1. – Introduction

Penrice Quarry & Mineral (PQM) operates a limestone quarry at Angaston under a range of different mining leases as follows:

- PM 86
- PM120
- MPL 118
- MPL 75 and
- ML 6233
- RL 109

PQM is located approximately 2.5 kilometres north of the township of Angaston.

DMITRE approved the Program for Environment Protection and Rehabilitation (PEPR) on the 28th October 2011 (2011/021).

This report covers the more significant environmental and operational issues undertaken at the site during the period from the 1st April 2015 – 30st June 2015 inclusive.

2. – Operational Update and Rehabilitation

No significant operational changes during the reporting period.

Mr Lane Collins took up his post as the Quarry Manager of the operations at the site on the 13th April 2015. Lane comes with a wealth of experience in quarrying and associated industries, transferring from Adelaide Brighton's Limestone Quarry in Geelong.

Environmentally, the company sought to engage Donovan Earth Care to continue some of the ongoing environmental tasks at the site. Unfortunately, Donovan's have since notified the company that they are unable to do this work. The company will now seek to engage another party to enable the environmental work to be undertaken.

During the reporting period, two complaints were entered in the Site Complaints Register relating to blasting. Site management investigated and followed up the issues with the complainants. A copy of the 2015 Community Complaints Register is shown in Appendix A

The Company has also circulated a newsletter during the quarter, informing the public of the operational and environmental activities being undertaken at the site.

3. - Environmental Management

Below is a summary of the significant environmental management activities that were undertaken throughout the reporting period.

3.1 Outcome 1. Dust Management

- BAM unit locations are shown in Appendix B
- BAM unit data showing the 24hr daily mean for the reporting period is attached in Appendix C. Data is missing from BAM 1, due to modem issues during the period.
- Three PM10 24hr average notifications were provided to both DSD and EPA for the period. All of these notifications were deemed to be from sources external to the quarry:
 - 1st April 2015 – BAM 1 and 2 exceedance due to nearby council work on Penrice Road and vineyard works (removal of vines and re-planting) directly opposite Quarry Entrance
 - 5th May 2015 – BAM 1 exceedance due to vineyard works directly opposite Quarry Entrance
 - 22nd June 2015 – BAM 2 exceedance due to localised burning of green waste in the vicinity of BAM 2. Notification of this exceedance was provided on the 5th August 2015, due to BAM units not uploading data and SMS notifications not received. This has been rectified by setup of SMS notification, when no data has been received for 24 hours.

3.2 Outcome 2. Drag Out

- Since the repairs undertaken to the wheel wash facility during the last quarter, there has been a clean out of the silt trap at the wheel wash and grid collectors have been cleaned.
- During the reporting period the company received no drag-out complaints. The road sweeper continues to be used three times per week at the quarry entrance and adjacent roads.

3.3 Outcome 3. Blast Monitoring

- All blasts are monitored for ground vibration and air blast overpressure in accordance with Australian Standard AS 2187.2 (2006). During the reporting period blasting complied with the Australian Standard and the approved measurement criteria contained in the PEPR.
- Two blast complaints were received during the quarter, these were investigated and followed up with the complainants. It was found that the blast associated with the complaints, complied with the approved Australian standard.

3.4 Outcome 4. Noise Monitoring

- It has been reported in the previous compliance period, that AECOM were engaged to undertake noise modelling at the site. The latest modelling was carried out on 22 October 2014 and concluded that the site was compliant with the approved noise measurement criteria and EPA Noise Policy.
- It is proposed that future noise modelling only be undertaken when there is a significant change in the method or size of operations, or a significant change in the equipment on the site.

3.5 Outcome 7. Visual Amenity

- During the quarter, final shaping and top soil placement was completed on Tier 2 on MPL118. Approximately 900 native trees will be planted on MPL 118, together with the seeding of the mound and irrigation works.
- Additional seeding was spread over the overburden mounds during the quarter to revegetate the site as part of the Strategic Visual Amenity Program.

3.6 Outcome 9. Ground Water

- Following a meeting with DSD and DEWNR hydrogeologist, a groundwater monitoring plan has been prepared and data from this plan will be used by hydrologists to investigate whether the future quarry operations will have any impact on the groundwater aquifers in the Barossa Basin.
- Communications with the local residents has continued as part of the Groundwater Monitoring program. Quarry management would like to thank the neighbours of the quarry for their cooperation with this program.

3.7 Storm water and erosion

- The company undertook to clean out the silt trap during the quarter and to replace the perimeter fencing around the silt trap.

4. – Mine Planning

As reported previously, the company has engaged the services of consultants Groundwork Plus to undertake a complete review of the existing mine plans and recalculate mining reserves and resources.

As part of this review, the quarry site was flown during the quarter and new survey plans of the site have been produced. One of the main planning issues will be to determine if there is enough overburden storage space at the site in the future. A number of options will be examined including, placing material in-pit, placing material outside the pit or applying for another MPL, or a combination of all the options. A minor drilling program will also be undertaken along the western rim of the pit, to firm up available resources.

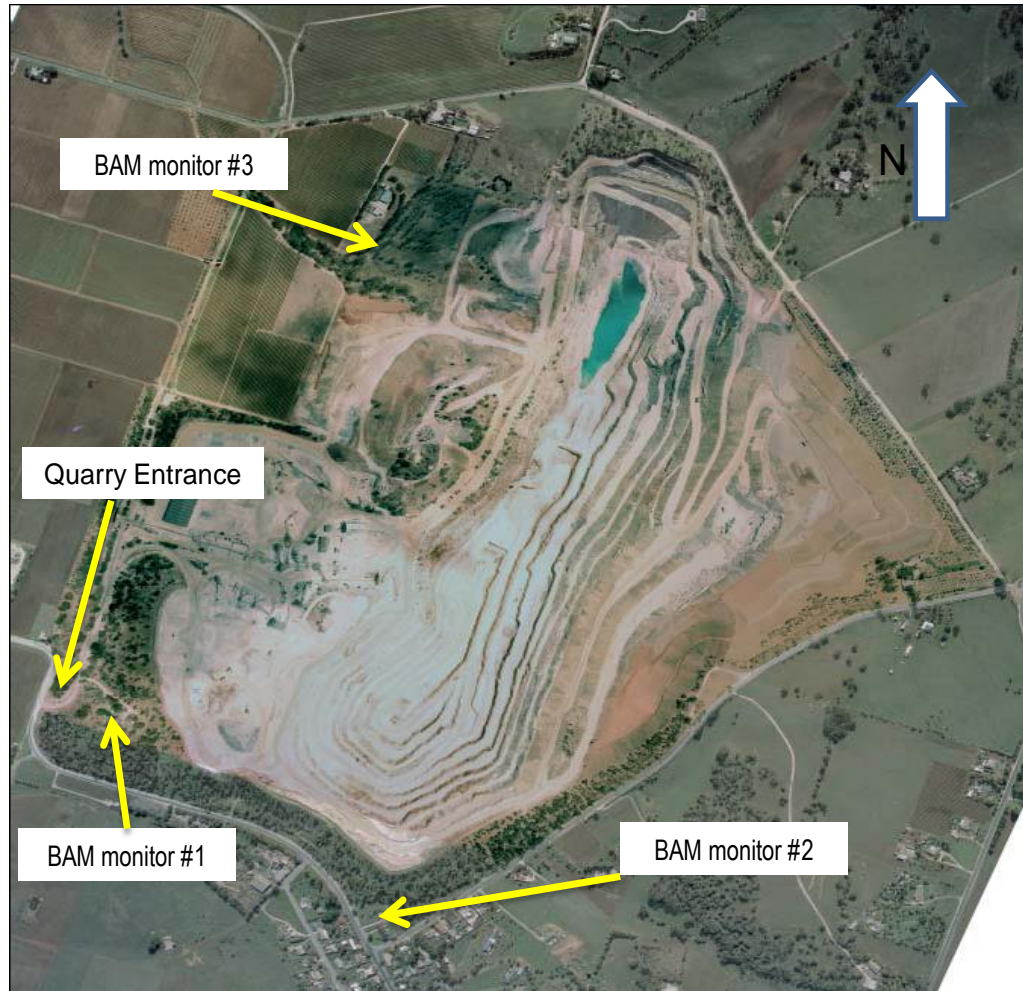
The company has also engaged Golder Associates to review the mine closure plan at the quarry. This review is progressing and should be completed during the next quarter.

Appendix A – 2015 Community Complaints Register

2015 COMMUNITY COMPLAINTS							
Date	Type	Name	Description	Investigation	Corrective actions	Responsible	Completed
16-01-15	Dust Complaint 1:58:00 PM	1	Environmental	This was a visual dust issue coming from the Aggregate Plant the wind was blowing from a south/westerly direction and the dust was going in to the pit.	Went and saw the neighbour and discussed the complaint, More water was put on at the Aggregate Plant to minimise the dust	AS	Y
06-02-15	Dust Complaint 8:30:00AM	2	Environmental	This was a visual dust issue coming from the Metso 1315 and load an haul in at the north west reclaim	Went and saw the neighbour and discussed the complaint. The dust management plan was put into place with the Metso 1315 and Load and haul shutdown.	AS and GH	Y
11-02-14	Dust Complaints 7:01:00PM and 8:01:00PM	3	Environmental	These both were visual dust issues coming from the Aggregate Plant area. The first one water truck had not been running the operator was just starting it when the wind picked up from the east blowing dust towards Nuriootpa. The second time the wind picked up again and all the dust was coming off the floors around the Aggregate Plant area.	Went and saw the neighbour and discussed the complaint. The water truck was deployed after the first phone call then after the second phone call the dust management plan was put in place and the Aggregate Plant was shutdown.	GS	Y
24-02-15	Dust Complaint 10:30AM	4	Environmental	This was a visual dust issue coming from the north west reclaim dump. The Metso 1315 was crushing in this area, we were in the process of shutdown the Metso 1315 when we received the complaint.	Spoke with the neighbour over the phone and discussed the complaint. The dust management plan was put into place with the Metso 1315 Crusher being shutdown and left off for the remainder of the day.	GH	Y
18-06-15	Vibration Complaint 1.00PM	5	Environmental	Vibration from shot 267 centre, printed and checked results from blast monitors all within limits.	Rang Mr Schwarz and met with him at his house presented the results and agreed to monitor opposite his house within our boundary (Packers site) for the next three months and meet again at the end of that period.	LC	Y
16-07-15	Vibration Complaint 1.00PM	6	Environmental	Vibration from shot 303 SE, printed and checked results from blast monitors all within limits.	Rang and met with Mr Nelson at his house discussed the results and agreed to visit his house next time we blast in that area of the pit.	LC	Y

Appendix B – BAM Monitor Locations

BAM Dust Monitor Locations



Appendix C – BAM Monitors 24hr Average PM10 Concentration 1st April 2015 – 30th June 2015

