



PROMINENT HILL COMPLIANCE REPORT 2017

**MINING LEASE 6228 & ASSOCIATED
TENNEMENTS**

PH-ENV-REP-0346
MINING LEASE 6228 & ASSOCIATED
TENNEMENTS COMPLIANCE REPORT 2017



PROMINENT HILL

Version	Description	Authors	Approved	Date
0	FINAL	Leighton Randell Senior Environmental Advisor Jasmine Richards Environment and Community Superintendent	Bruce Vernon SHEC Manager John Penhall General Manager – Prominent Hill	30/09/2017

PROMINENT HILL

FORWARD LOOKING STATEMENTS

Some statements in this document are forward-looking statements. Such statements include, but are not limited to, statements with regard to capacity, future production and grades, projections for sales growth, estimated revenues and reserves, targets for cost savings, the construction cost of new projects, projected capital expenditures, the timing of new projects, future cash flow and debt levels, the outlook for minerals and metals prices, the outlook for economic recovery and trends in the trading environment and may be (but are not necessarily) identified by the use of phrases such as "will", "expect", "anticipate", "believe" and "envisage". By their nature, forward-looking statements involve risk and uncertainty because they relate to events and depend on circumstances that will occur in the future and may be outside OZ Minerals' control. Actual results and developments may differ materially from those expressed or implied in such statements because of a number of factors, including levels of demand and market prices, the ability to produce and transport products profitably, the impact of foreign currency exchange rates on market prices and operating costs, operational problems, political uncertainty and economic conditions in relevant areas of the world, the actions of competitors, activities by governmental authorities such as changes in taxation or regulation.

Given these risks and uncertainties, undue reliance should not be placed on forward-looking statements which speak only as at the date of this document. Subject to any continuing obligations under applicable law or any relevant stock exchange listing rules, OZ Minerals does not undertake any obligation to publicly release any updates or revisions to any forward looking statements contained in this document, whether as a result of any change in OZ Mineral's expectations in relation to them, or any change in events, conditions or circumstances on which any such statement is based.

PROMINENT HILL

PRODUCTION TARGETS CAUTIONARY STATEMENT

Production Targets for the Prominent Hill Underground only are based on:

Proved Ore Reserve	47%
Probable Ore Reserve	33%
Measured Mineral Resource	0%
Indicated Mineral Resource	4%
Inferred Mineral Resource	16%

Production Targets for the entire Prominent Hill asset are based on:

Proved Ore Reserve	46%
Probable Ore Reserve	40%
Measured Mineral Resource	0%
Indicated Mineral Resource	3%
Inferred Mineral Resource	11%

The modifying factors used in the estimation of the Ore Reserve were also applied to the Mineral Resources in the generation of the production target. There is a low level of geological confidence associated with Inferred Mineral Resources and there is no certainty that further exploration work will result in the determination of Indicated Mineral Resources or that the production targets will be realised.

The Ore Reserve and Mineral Resource Estimate underpinning these Production Targets were prepared by a Competent Person in accordance with the JORC Code 2012. The production targets are the result of detailed studies based on the actual performance of our existing mines and processing plant. These studies include the assessment of mining, metallurgical, ore processing, marketing, government, legal, environmental, economic and social factors.

Further information on Prominent Hill Resources and Reserves is available in the document entitled "Prominent Hill 2016 Mineral Resource and Ore Reserve Statement and Explanatory Notes" which is annexed to the ASX Release entitled "Prominent Hill mine life extended to 2028" released on 15 November 2016 and available at <http://www.ozminerals.com/media/prominent-hill-mine-life-extended-to-2028-and-2016-mineral-resource-and-ore/>

PROMINENT HILL

TABLE OF CONTENTS

FORWARD LOOKING STATEMENTS	3
PRODUCTION TARGETS CAUTIONARY STATEMENT	4
EXECUTIVE SUMMARY.....	8
ACKNOWLEDGEMENTS.....	9
ACRONYMS	10
1.0 INTRODUCTION	11
2.0 EXECUTIVE DECLARATION.....	13
3.0 TENEMENTS.....	14
4.0 OTHER LICENCES, PERMITS, WAIVERS, NATIVE TITLE AND AGREEMENTS	17
5.0 MINING OPERATIONS	19
5.1 PROJECT SCHEDULE	19
5.2 ORE RESERVES AND MINERAL RESOURCE.....	21
5.3 ORE MINING	24
5.4 WASTE	24
5.5 ORE PROCESSING	25
5.6 CONCENTRATE	25
6.0 VOLUNTARY INFORMATION	26
7.0 PROJECT VARIATION SUMMARY	28
8.0 COMPLAINTS	29
9.0 COMPLIANCE SUMMARY	30
10.0 COMPLIANCE TABLES.....	31
11.0 REVIOUS REPORTING YEAR NON COMPLIANCE AND SUBSEQUENT RECTIFICATION UPDATE	48
12.0 DISTURBANCE AND REHABILITATION ACTIVITIES.....	49
13.0 ENVIRONMENTAL PROTECTION AND BIODIVERSITY CONSERVATION ACT REPORTING.....	50
14.0 AUDITS AND REVIEWS	54
15.0 VERIFICATION OF UNCERTAINTIES	55
16.0 TECHNICAL REPORTS	56
17.0 ACTIONS FROM PREVIOUS REPORTING PERIOD	57
18.0 FORWARD WORKS PLAN.....	58
19.0 MINISTERIAL DETERMINATION CHECKLIST	59
20.0 REFERENCES	63

LIST OF FIGURES

Figure 1-1: Project Location	12
------------------------------------	----

PROMINENT HILL

Figure 3-1: Mining Lease Activities	15
Figure 3-2: Mining Lease Boundary and Associated Tenements	16

LIST OF TABLES

Table 3-1: Tenement Summary	14
Table 4-1: Summary of Other Licences, Permits, Waivers, Native Title and Agreements.....	17
Table 5-1: Prominent Hill Operations Indicative Project Schedule.....	20
Table 5-2: Summary of Prominent Hill Ore Reserve Estimates*	21
Table 5-3: Summary of Prominent Hill Copper Mineral Resource Estimate*.....	22
Table 5-4: Summary of Prominent Hill Gold Mineral Resource Estimate	23
Table 5-5: Prominent Hill Open Pit Ore Mined	24
Table 5-6: Underground Ore Mined	24
Table 5-7: Waste Mined	24
Table 5-8: Ore Milled.....	25
Table 5-9: Concentrate Production	25
Table 6-1: Voluntary Information for Prominent Hill	26
Table 7-1: Project Variation Summary for the Reporting Period.....	28
Table 7-2: Project Variation Undertaken in Previous Reporting Periods and Not Included in Latest PEPR	28
Table 8-1: Complaints Received During the Reporting Period	29
Table 9-1: Compliance Summary for the Reporting Period.....	30
Table 10-1: Surface Water	31
Table 10-2 Groundwater.....	35
Table 10-3: Flora and Fauna Measurement Criteria and Leading Indicator Criteria.....	38
Table 10-4 Radiation and Air Quality Measurement Criteria and Leading Indicator Criteria.....	41
Table 10-5 Land Use Measurement Criteria and Leading Indicator Criteria	42
Table 10-6 Roads, Traffic and Other Infrastructure Measurement Criteria and Leading Indicator Criteria.....	43
Table 10-7 Indigenous and Non-Indigenous Cultural Heritage Measurement Criteria and Leading Indicator Criteria	44
Table 10-8 Summary of Grouped Lease Conditions with Corresponding Environmental Outcomes.....	45
Table 10-9 Summary of Grouped Lease Conditions with no Corresponding Environmental Outcome	47
Table 11-1: Non-Compliances from Previous Reporting Period	48

PH-ENV-REP-0346
MINING LEASE 6228 & ASSOCIATED
TENNEMENTS COMPLIANCE REPORT 2017



PROMINENT HILL

Table 12-1: Summary of Disturbance and Rehabilitation Activities in the Reporting Period	49
Table 13-1: Summary EPBC Approval Conditions 2017.....	50
Table 14-1: Audits and Reviews in Reporting Period.....	54
Table 15-1: Summary of uncertainty verifications	55
Table 16-1: Technical Reports	56
Table 17-1: Summary of Previous Reporting Period Actions	57
Table 18-1: Forward Works Plan Summary.....	58

PROMINENT HILL

EXECUTIVE SUMMARY

OZ Minerals Prominent Hill Operations Pty Ltd submits this Compliance Report as required by the South Australian *Mining Regulations 2011* and conditions of the Prominent Hill Mining Lease (ML), Miscellaneous Purposes Licences (MPL) and Extractive Minerals Leases (EML). This Compliance Report demonstrates compliance with the lease and licence conditions as outlined in the Program for Environment Protection and Rehabilitation (PEPR) 2017, which was submitted to the Department of the Premier and Cabinet (DPC) on 31 July 2017. Any refinements made to the PEPR 2017 will be reflected in subsequent Compliance Reports. This report covers the period 1 July 2016 to 30 June 2017.

During the reporting period, the Prominent Hill Operation was complaint for all conditions excluding the Outcome Measurement Criteria (OMC) for Grouped Condition 08, which demonstrates a partial compliance and OMC for Grouped Condition 13 and 14, which shows a non-compliance.

This report has been completed in general accordance with the Ministerial Determination MD009 – Reporting Periods and Minimum Information required to be provided in a Compliance Report and associated Ministerial Guideline 003.

PROMINENT HILL

ACKNOWLEDGEMENTS

Acknowledgements to Jacobs, Eco Logical Australia (ELA), Greenbase, SMEC and Environmental Biodiversity Services Ecology (EBS) who have provided maps, images and data to enable this report to be generated.

PROMINENT HILL

ACRONYMS

ARD – Acid Rock Drainage

ASX – Australian Stock Exchange

DEWNR – Department of Environment, Water and Natural Resources (formerly DWLBC)

DoD – Department of Defence

DoEE – Department of the Environment and Energy

DPC – Department of Premier and Cabinet

DWLBC – Department of Water, Land and Biodiversity Conservation (now DEWNR)

EC – Electrical Conductivity

EL – Exploration Licence

EML – Extractive Mineral Lease

EPBC – Environmental Protection Biodiversity and Conservation

GAB – Great Artesian Basin

IWL – Integrated Waste Landform

kV – Kilovolt

MARP – Mining and Rehabilitation Program (pre *Mining Regulation 2011*)

ML – Mining Lease

MPL – Miscellaneous Purposes Licence

NAF – Non Acid Forming

OMC – Outcome Measurement Criteria

PAF – Potential Acid Forming

PEPR – Program for Environment Protection and Rehabilitation

ROM – Run of Mine

SA EPA – South Australian Environment Protection Authority

SEB – Significant Environmental Benefit

WPA – Woomera Prohibited Area

PH-ENV-REP-0346
MINING LEASE 6228 & ASSOCIATED
TENEMENTS COMPLIANCE REPORT 2017

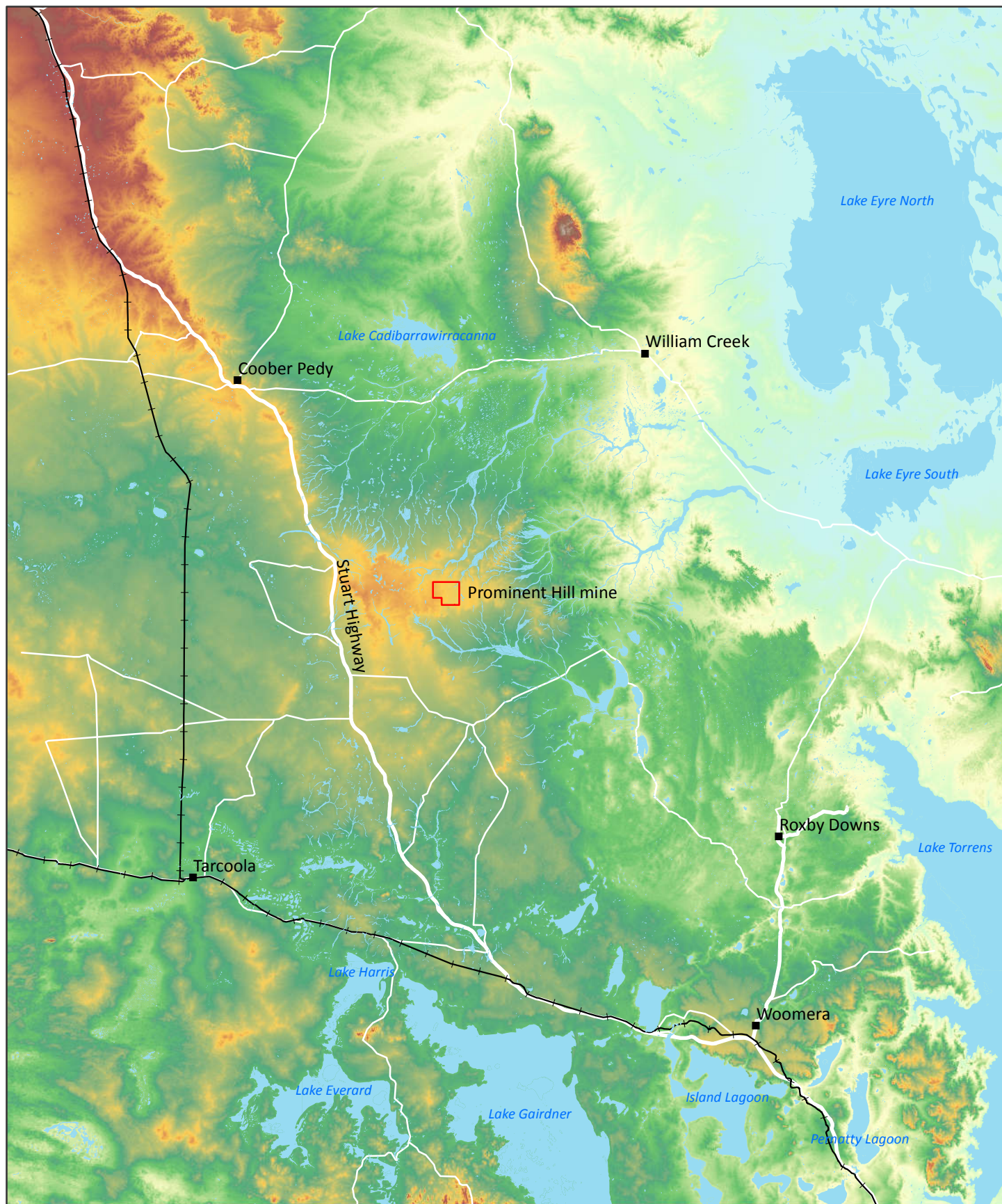


PROMINENT HILL

1.0 INTRODUCTION

OZ Minerals Prominent Hill Operations Pty Ltd (herein referred to as OZ Minerals) submits this Compliance Report as required by *Mining Regulation 2011* and conditions of the Prominent Hill Mining Lease (ML), Miscellaneous Purposes Licences (MPLs) and Extractive Mineral Leases (EMLs). The following table summarises information relating to approvals, project details and site contacts.

Mine Name	Prominent Hill	PEPR#	Pending (see PEPR 2017)
Operations	Prominent Hill (Open Pit) Prominent Hill (Underground)	Date Approved	Submission of PEPR 2017 made on 31 July 2017
Lease Holder	OZ Minerals Prominent Hill Operations Pty Ltd		
Operator	OZ Minerals Prominent Hill Operations Pty Ltd		
Mining Lease Approval Date	2 August 2006		
Associated Tenements	Refer to Section 3.0		
Approval Document	PEPR 2017 submitted 31 July 2017 and under consideration by the Department of Premier and Cabinet.		
Ministerial Determination	This Compliance Report has been completed in general accordance with the Ministerial Determination MD009 -Reporting Periods and Minimum Information Required to be Provided in a Compliance Report and associated Ministerial Guideline 003.		
Site Contact	John Penhall General Manager – Prominent Hill OZ Minerals Prominent Hill Operation 162 Greenhill Road Parkside SA 5063		
	Email	john.penhall@ozminerals.com	
	Phone Number	08 8672 8344	
Registered Mine Manager	Prominent Hill Open Pit: Mark Ormond, Open Pit Technical Services Superintendent Underground Mine: Martin Zgrajewski, Underground Mining Manager		
Site Location Details	Located approximately 650 km north-north-west of Adelaide, about half way between Roxby Downs and Coober Pedy (Figure 1-1)		
Reporting Period	From	1 July 2016	To 30 June 2017
Date of Compliance Report Preparation	Quarter 3, 2017		



Mining Lease ML 6228

OZ Minerals does not warrant that this document is definitive nor free of error and does not accept liability for any loss caused or arising from reliance upon information provided herein.



GDA 1994 MGA Zone 53
A4 1:2,000,000

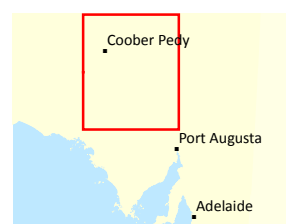
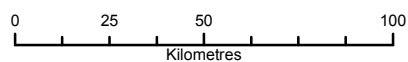


Figure 1.1: Project Location


PH-ENV-REP-0346
MINING LEASE 6228 & ASSOCIATED
TENNEMENTS COMPLIANCE REPORT 2017



PROMINENT HILL

2.0 EXECUTIVE DECLARATION

This document has been prepared to fulfil the requirements under Regulation 86 of the *Mining Regulations 2011* for the tenements listed herein. The information contained in this report is to the best of my knowledge a true and accurate representation of the Prominent Hill operation mining activities and compliance status for the reporting period.

Name:	Position or Agent:	Signature:	Date:
John Penhall	General Manager – Prominent Hill		23 September 2017
Agency Agreement:			
Not applicable (Report prepared by leaseholder)			

PH-ENV-REP-0346
MINING LEASE 6228 & ASSOCIATED
TENEMENTS COMPLIANCE REPORT 2017



PROMINENT HILL

3.0 TENEMENTS

The extent of mining lease activities is shown on Figure 3-1. All tenements are detailed in Figure 3-2 and in Table 3-1.


Table 3-1: Tenement Summary

Tenement	Tenement Number	Approval Date	Expiry Date
Prominent Hill Mining Lease	ML 6228	02/08/2006	01/08/2021
Site Access Road	MPL 83–84	20/10/2006	01/08/2021
Concentrate Export Road	MPL 91	21/08/2007	01/08/2021
	MPL 96	22/10/2007	01/08/2021
	MPL 97	22/10/2007	01/08/2021
	MPL 101	05/11/2007	01/08/2021
Wellfields (Borefields) and Associated Infrastructure	MPL 81 (Virgo)	19/09/2006	01/08/2021
	MPL 82 (Virgo)	04/10/2006	01/08/2021
	MPL 93–94 (Aries)	10/09/2007	01/08/2021
	MPL 112–117 (Aries)	03/10/2008	01/08/2021
Extractive Minerals Areas	EML 6234	17/10/2006	01/08/2021
	EML 6236–6242	09/11/2006	01/08/2021
	EML 6278–6296	20/12/2007	01/08/2021
	EML 6299–6301	23/01/2008	01/08/2021
Electricity Transmission Line	MPL 119–122	09/07/2010	01/08/2021

*Wellfields are generally referred to as Borefields in this report

During the reporting period OZ Minerals has held a number of Exploration Licences (EL's) in the vicinity of the Prominent Hill operations. The compliance reporting of these is handled separately as they are subject to exploration compliance reporting.



 Prominent Hill Mining Lease
Aerial imagery taken September 2014

OZ Minerals does not warrant that this document is definitive nor free of error and does not accept liability for any loss caused or arising from reliance upon information provided herein.

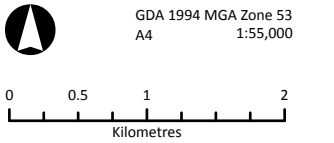


Figure 3.1: Mining Lease Activities

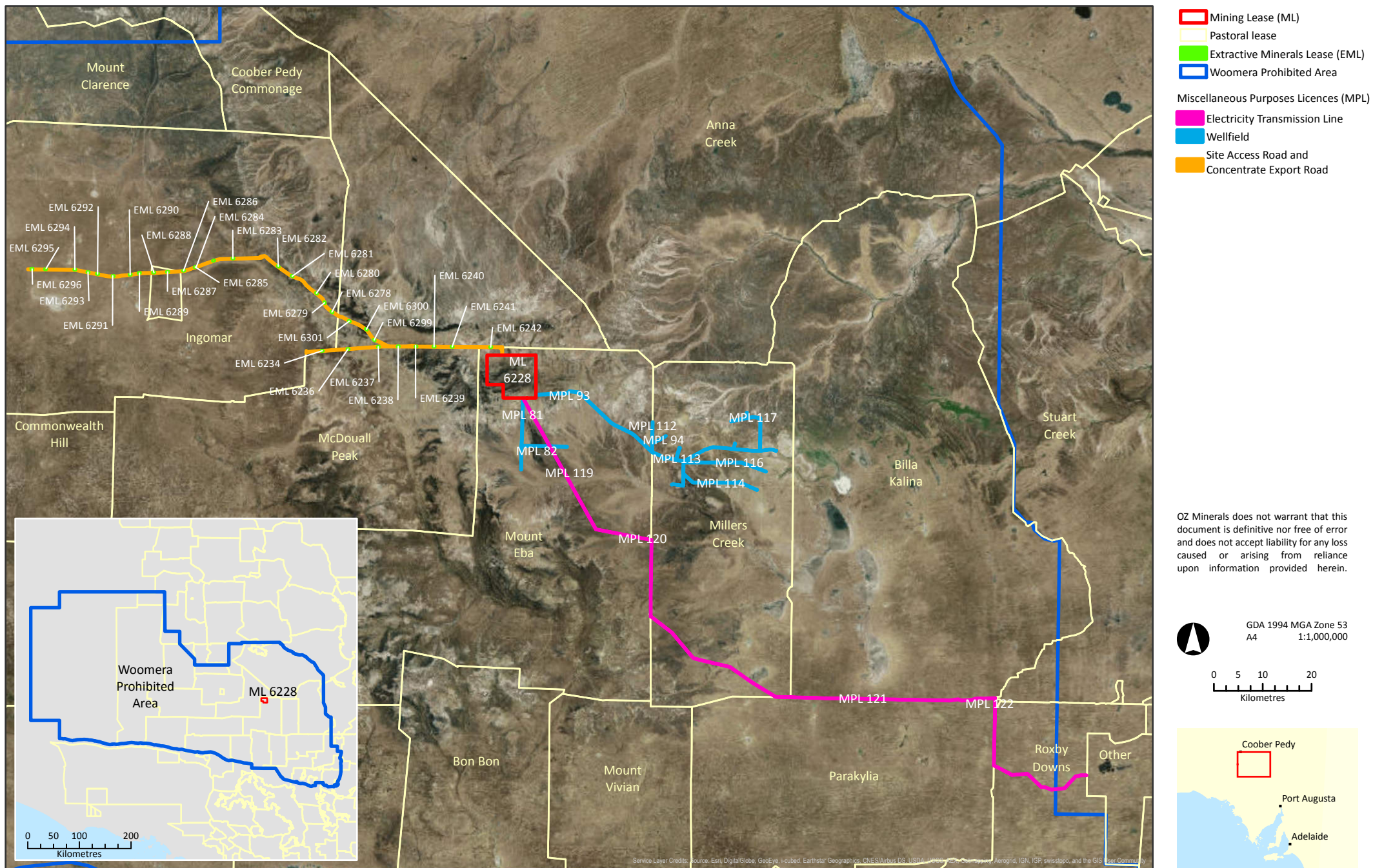


Figure 3.2: Mining Lease Boundary and Associated Tenements

PH-ENV-REP-0346
MINING LEASE MINING LEASE 6228 & ASSOCIATED
TENEMENTS COMPLIANCE REPORT



PROMINENT HILL

4.0 OTHER LICENCES, PERMITS, WAIVERS, NATIVE TITLE AND AGREEMENTS

Table 4-1: Summary of Other Licences, Permits, Waivers, Native Title and Agreements

Licence, Permit or Agreement	Regulatory Authority	Supporting Documentation
Licence to Undertake Prescribed Activities of Environmental Significance – Mineral Works, Sewage Treatment Works, Waste or Recycling Depot (Licence No. 22764)	EPA	Waste Management Plan (4.6.0PLN001), meets the requirements of the Landfill Environmental Management Plan
Haul Road Maintenance Water Licence No. 183346	DEWNR	Water Licence 183346 Monitoring Plan (4.7.1PLN003)
Stuart Highway – Underpass Access Deed of Agreement	DPTI	Traffic Management Plan (PH-ENV-PLN-0001)
Borefields Water Licence No. 41028	DEWNR	Water Licence 41028 Monitoring Plan (4.7.1PLN002)
Water Effecting Activity – Water Permit to Drill	DEWNR	Separate permits for each drilled borehole
EPBC 2005/2040 EPBC 2007/3490 EPBC 2007/3683 EPBC 2007/3323 EPBC 2010/18519	DoEE	Biodiversity Management Plan (4.2.0PLN001) Groundwater Management Plan (4.7.1PLN001) Water Licence 41028 Monitoring Plan (4.7.1PLN002) Water Licence 183346 Monitoring Plan (4.7.1PLN003) Prominent Hill Stage Two Significant Benefit Offset Area Management Plan 2016 (OZ Minerals 2016b)
Woomera Prohibited Area Deed of Access	DoD	Agreement (5.3.1AGR001 – Confidential)
Native Title Mining Agreement	Antakirinja Land Management Aboriginal Corporation	Agreement (5.1.3AGR002 – Confidential) Cultural Heritage Management Plan (5.1.1PRO001 – Confidential)
Registration of Premises in which Unsealed Radioactive Substances are Kept or Handled (Certificate No. 19334)	EPA	Radiation Management Plan (2.8.0PLN001) Radioactive Waste Management Plan (2.8.0PLN001)
Registration of an Ionising Radiation Apparatus (Certificate No. 20021 and No. 25536)	EPA	Radiation Management Plan (2.8.0PLN001)
Approval for the Cartage and Use of Recycled Water for Dust Suppression (WCS No. 2309)	Government of South Australia, Department for Health and Ageing	Waste Water Treatment Plant Management Plan (4.7.3PLN001)

PH-ENV-REP-0346
MINING LEASE MINING LEASE 6228 & ASSOCIATED
TENEMENTS COMPLIANCE REPORT



PROMINENT HILL

Licence, Permit or Agreement	Regulatory Authority	Supporting Documentation
Aerodrome Certificate (1-HOO80)	Australian Government Civil Aviation Safety Authority	Aerodrome Management Manual (3.20.5PLN001)
Dangerous Substances Licence No. 366468	Government of South Australia SafeWork SA	NA
Apparatus licences (various licence numbers)	Australian Government Australian Communications and Media Authority	NA
Magazine Licence No. 331741, No. 530014 and No. 98484	Government of South Australia SafeWork SA	NA
Licence to Carry Explosives (467702 and 467703)	Government of South Australia SafeWork SA	NA
Registration under the <i>Safe Drinking Water Act 2011</i>	Government of South Australia, Department for Health and Ageing	Drinking Water Risk Management Plan (1.2.1PLN006)
Electricity Transmission Licence (1.5.4LIC001)	Essential Services Commission of South Australia	None
Waste Water Treatment Plant (WCS No. 2259)	Government of South Australia, Department for Health and Ageing	Waste Water Treatment Plant Management Plan (4.7.3PLN001)
Millers Creek Land Access and Mining Compensation Agreement	Millers Creek Pastoral Lease Holder (2315)	Agreement (5.2.2AGR001 – Confidential)
McDougall Peak Land Access and Mining Compensation Agreement	McDougall Peak Pastoral Lease Holder (2341)	Agreement (5.2.2AGR001 – Confidential)
Billa Kalina Land Access and Compensation Agreement	Billa Kalina Pastoral Lease Holder (2415)	Agreement (5.2.2AGR013 – Confidential)
Parakylia Land Access and Mining Compensation Agreement	Parakylia Pastoral Lease Holder (2197)	Agreement (OZM-000033-AA – Confidential)
Mount Eba Land Access and Compensation Agreement	Mount Eba Pastoral Lease Holder (2197)	Agreement (5.2.2AGR007 – Confidential)
Ingomar Land Access and Compensation Agreement	Ingomar Pastoral Lease Holder (2153, 2339, 2527)	Agreement (5.2.2AGR010 – Confidential)

Note: Licences/Permits for equipment or associated with personnel have not been included in this section.

PROMINENT HILL

5.0 MINING OPERATIONS

5.1 Project Schedule

The high-level project schedule for the Prominent Hill operation to FY 2032 is summarised in Table 5-1. Due to the nature of the project, the schedule and timing of activities may alter as it develops.

OZ Minerals understands that it cannot undertake any activity not prescribed within current leases, licences or this PEPR scope of works without prior approval and/or an approved project variation assessed against the outcome measurement criteria and lease / licence conditions. Any activities that OZ Minerals wishes to undertake for the future scope of the project may require additional licencing.

PH-ENV-REP-0346
MINING LEASE 6228 & ASSOCIATED
TENNEMENTS COMPLIANCE REPORT 2017



PROMINENT HILL

Table 5-1: Prominent Hill Operations Indicative Project Schedule

	2017	2018	2019	2020	2021	2022	2023	2024	2025	2026	2027	2028	2029	2030	2031	2032
Northern WRD development and closure																
Malu open pit operations																
Southern WRD development and closure																
TSF operations	Wall Lift				Wall Lift											
Underground operations																
Processing plant operations																
Mine closure (post-2028)																

PH-ENV-REP-0346
MINING LEASE 6228 & ASSOCIATED
TENEMENTS COMPLIANCE REPORT 2017



PROMINENT HILL

5.2 Ore Reserves and Mineral Resource

The Prominent Hill Ore Reserve estimates as at 1 July 2016 are presented in Table 5-2.

Table 5-2: Summary of Prominent Hill Ore Reserve Estimates*

Source	Ore Type	Classification	Tonnes (Mt)	Cu (%)	Au (g/t)	Ag (g/t)	Cu (kt)	Au (koz)	Ag (Moz)
Open Pit	Copper	Proved	10	1.1	0.5	3.6	110	170	1.2
		Probable	10	1.0	0.6	2.5	91	180	0.8
	Gold	Proved	0	0.0	1.2	1.9	0.0	1.0	0.0
		Probable	2	0.1	1.0	1.5	1.0	62	0.1
	Sub-Total		22	0.9	0.6	2.9	200	420	2.0
Ankata	Copper	Proved	6	2.1	0.4	3.9	120	67	0.8
		Probable	0	0.9	0.7	0.6	0	0.0	0.0
	Sub-Total		6	2.0	0.4	3.9	120	67	0.8
Malu/Kalaya**	Copper	Proved	13	1.5	0.5	3.8	200	190	1.6
		Probable	14	1.1	0.8	2.8	160	330	1.2
	Sub-Total		27	1.3	0.6	3.3	350	530	2.8
Surface Stocks	Copper	Proved	7	0.7	0.4	2.4	52	93	0.5
		Probable	-	-	-	-	-	-	-
	Gold	Proved	13	0.1	0.7	2.3	14	320	1.0
		Probable	-	-	-	-	-	-	-
	Sub-Total		20	0.3	0.6	2.3	66	410	1.5
Total	Copper	Proved	36	1.3	0.5	3.5	480	520	4.0
		Probable	23	1.1	0.7	2.7	250	520	2.0
	Gold	Proved	13	0.1	0.7	2.3	14	320	1.0
		Probable	2	0.1	1.0	1.5	1	62	0.1
	All Ore	Proved	49	1.0	0.5	3.2	490	840	5.0
		Probable	25	1.0	0.7	2.6	250	580	2.1
	Total		75	1.0	0.6	3.0	740	1400	7.1

*Table subject to rounding errors. This production target must be read in conjunction with the production target cautionary statement on page 4.

PH-ENV-REP-0346
MINING LEASE 6228 & ASSOCIATED
TENEMENTS COMPLIANCE REPORT 2017



PROMINENT HILL

The Prominent Hill copper Mineral Resource estimate as at 1 July 2016 is presented in Table 5-3.

Table 5-3: Summary of Prominent Hill Copper Mineral Resource Estimate*

	Classification	Tonnes (Mt)	Cu (%)	Au (g/t)	Ag (g/t)	Cu (kt)	Au (koz)	Ag (Moz)
Open Pit (0.25% Cu cut-off)	Measured	10	1.2	0.5	3.6	120	170	1.2
	Indicated	10	1.1	0.6	2.5	100	180	0.8
	Inferred	0	0.8	0.4	2.5	2	3	0.0
	Total	20	1.1	0.6	3.1	220	360	1.9
Malu (\$60 NSR cut-off envelope)	Measured	22	1.4	0.5	3.6	310	330	2.5
	Indicated	26	1.1	0.7	2.8	290	580	2.4
	Inferred	34	1.1	0.6	3.0	390	690	3.3
	Total	82	1.2	0.6	3.1	990	1600	8.2
Kalaya (\$60 NSR cut-off envelope)	Measured	0	0.0	0.0	0.0	0	0.0	0.0
	Indicated	1	1.1	0.5	2.0	14	21	0.1
	Inferred	30	1.0	0.5	1.9	310	470	1.8
	Total	31	1.0	0.5	1.9	320	490	1.9
Ankata (\$60 NSR cut-off envelope)	Measured	7	2.2	0.4	4.3	160	97	1.0
	Indicated	0	1.0	0.6	1.0	1	2	0.0
	Inferred	0	1.2	0.1	3.0	5	2	0.0
	Total	8	2.1	0.4	4.2	170	100	1.1
Surface stocks	Measured	7	0.7	0.4	2.4	52	93	0.5
Total	Measured	46	1.4	0.5	3.5	640	690	5.2
	Indicated	37	1.1	0.7	2.7	410	790	3.2
	Inferred	64	1.1	0.6	2.5	700	1,170	5.2
	Total	148	1.2	0.6	2.9	1,750	2,640	13.6

*Table subject to rounding errors. This production target must be read in conjunction with the production target cautionary statement on page 4.

PH-ENV-REP-0346
MINING LEASE 6228 & ASSOCIATED
TENEMENTS COMPLIANCE REPORT 2017



PROMINENT HILL

The Prominent Hill gold-only Mineral Resource estimate as at 1 July 2016 is presented in Table 5-4.

Table 5-4: Summary of Prominent Hill Gold Mineral Resource Estimate

	Category	Tonnes (Mt)	Cu (%)	Au (g/t)	Ag (g/t)	Cu (kt)	Au (koz)	Ag (Moz)
Open Pit (0.25% Cu cut-off)	Measured	0	0.0	1.2	1.7	0	1	0.0
	Indicated	2	0.1	1.0	1.3	1	69	0.1
	Inferred	0	0.0	1.2	1.0	0	9	0.0
	Total	2	0.1	1.0	1.3	1	79	0.1
Malu (\$60 NSR cut-off envelope)	Measured	0	0.0	0.0	0.0	0	0	0.0
	Indicated	2	0.0	2.6	0.9	0	170	0.1
	Inferred	2	0.0	2.1	0.8	0	110	0.0
	Total	4	0.0	2.4	0.9	1	280	0.1
Kalaya (\$60 NSR cut-off envelope)	Measured	0	0.0	0.0	0.0	0	0	0.0
	Indicated	0	0.0	0.0	0.0	0	0	0.0
	Inferred	5	0.1	2.0	0.6	3	340	0.1
	Total	5	0.1	2.0	0.6	3	340	0.1
Ankata (\$60 NSR cut-off envelope)	Measured	0	0.0	0.0	0.0	0	0	0.0
	Indicated	0	0.0	0.0	0.0	0	0	0.0
	Inferred	0	0.0	0.0	0.0	0	0	0.0
	Total	0	0.0	0.0	0.0	0	0	0.0
Surface stocks	Measured	13	0.1	0.7	2.3	14	320	1.0
Total	Measured	13	0.1	0.7	2.3	14	320	1.0
	Indicated	4	0.0	1.8	1.1	2	240	0.2
	Inferred	7	0.0	2.0	0.6	3	460	0.1
	Total	25	0.1	1.3	1.6	19	1,020	1.3

*Table subject to rounding errors. This production target must be read in conjunction with the production target cautionary statement on page 4.

PROMINENT HILL

The information set out in Table 5-2, Table 5-3 and Table 5-4 is a summary of information relating to Prominent Hill Mineral Resources and Ore Reserves set out in the Prominent Hill Mineral Resources and Ore Reserves Statement as at 1 July 2016 prepared by Competent Persons – Mr Colin Lollo, Mr Michael Wood and Mr Luke Sandery, which was released to the market on 15 November 2016. This statement is available at: <http://www.ozminerals.com/operations/resources-reserves/>.

OZ Minerals confirms that it is not aware of any new information or data that materially affects the information included in the original market announcement and, in the case of estimates of Mineral Resources or Ore Reserves that all material assumptions and technical parameters underpinning the estimates in the relevant market announcement continue to apply and have not materially changed. OZ Minerals confirms that the form and context in which the Competent Person's findings are presented have not been materially modified from the original market announcement.

5.3 Ore Mining

Table 5-5: Prominent Hill Open Pit Ore Mined

Reporting Period – Ore Mined
14,300,763 t
Figures reconciled to align with data publically reported via OZ Minerals Quarterly Reports (see http://www.ozminerals.com/investor-information/reports/quarterly-reports.html).

Table 5-6: Underground Ore Mined

Reporting Period – Ore Mined
2,168,391 t
Figures reconciled to align with data publically reported via OZ Minerals Quarterly Reports (see http://www.ozminerals.com/investor-information/reports/quarterly-reports.html).

5.4 Waste

Table 5-7: Waste Mined

Reporting Period – Waste Mined
10,062,124 t
Figures reconciled to align with data publically reported via OZ Minerals Quarterly Reports (see http://www.ozminerals.com/investor-information/reports/quarterly-reports.html).

PH-ENV-REP-0346
MINING LEASE 6228 & ASSOCIATED
TENEMENTS COMPLIANCE REPORT 2017



PROMINENT HILL

5.5 Ore Processing

Table 5-8: Ore Milled

Reporting Period - Ore Milled
9,507,397 t
Figures reconciled to align with data publically reported via OZ Minerals Quarterly Reports (see http://www.ozminerals.com/investor-information/reports/quarterly-reports.html).

5.6 Concentrate

Table 5-9: Concentrate Production

Reporting Period – Copper Concentrate Produced
238,025 DMT
Figures reconciled to align with data publically reported via OZ Minerals Quarterly Reports (see http://www.ozminerals.com/investor-information/reports/quarterly-reports.html).

PH-ENV-REP-0346
MINING LEASE 6228 & ASSOCIATED
TENEMENTS COMPLIANCE REPORT 2017



PROMINENT HILL

6.0 VOLUNTARY INFORMATION

Table 6-1: Voluntary Information for Prominent Hill

Activity	Description
Project footprint	Total project-related disturbance is 2,045 ha, consisting of: <ul style="list-style-type: none"> • 1,420 ha associated with activities within ML 6228 • 196 ha associated with the Concentrate Export Road • 141 ha associated with Aries Borefield • 151 ha associated with the Electricity Transmission Line • 67 ha associated with the EMLs • 63 ha associated with the Site Access Road • 8 ha associated with Virgo Borefield.
Mining operations	Conventional drill, blast, load, haul and dump open pit mining operation, underground SLOS mining, with ore trucked to surface.
Open pit dimensions	386 m deep, 1.5 km long and 1.6 km wide (as at December 2016). Final depth will be approximately 470 m deep from surface.
Processing operations	Conventional crushing, grinding and flotation process to produce copper concentrates containing gold and silver.
Annual production	Between 150,000 and 250,000 dry tpa of copper concentrate from approximately 10–11 Mtpa of ore production.
Operating hours	Continuous operation (i.e. 24 hours per day, seven days per week).
Estimated mine life	Open pit operations to mid-2018, underground and processing operations to late-2028, to be followed by a period comprising decommissioning, closure and rehabilitation activities.
Tailings and waste rock management	Waste rock material is transported to one of two Waste Rock Dumps (WRDs) located to the north and south of the open pit. Tailings are placed into a dedicated surface tailings storage facility (TSF) with embankments constructed of waste rock, and integrated with the Southern WRD in a structure referred to as the Integrated Waste Landform (IWL).
Site access and logistics	Access to and from site via a dedicated Site Access Road. Concentrate export via a dedicated Concentrate Export Road to Wirrida railway siding.
Raw water source	Raw water for Prominent Hill operations is supplied from the Aries Borefield and Virgo Borefield under the conditions of Water Licence No. 41028. Water is sourced from the Boorthanna Formation aquifer of the Arckaringa Basin. Raw water for the Concentrate Export Road for dust suppression is supplied from two extraction points under the conditions of Water Licence No. 183346. Water is sourced from the non-artesian Eromanga aquifer of the Eromanga Basin.
Raw water licence limit	26.6 ML/d under Water Licence No. 41028 1 ML/d under Water Licence No. 183346.
Raw water consumption	Generally 12.5–18.1 ML/d for Water Licence No. 41028 at Aries Borefield. Virgo Borefield (Water Licence No. 41028) is used as necessary to supplement supply to Prominent Hill in the event the Aries Borefield is unavailable.
Water management	Water recycling initiatives on-site include: <ul style="list-style-type: none"> • up to 4 ML/d returned to the processing plant from the TSF decant system

PH-ENV-REP-0346
MINING LEASE 6228 & ASSOCIATED
TENNEMENTS COMPLIANCE REPORT 2017



PROMINENT HILL

Activity	Description
	<ul style="list-style-type: none"> approximately 0.8 ML/d and 1.3 ML/d returned from underground and open pit mine dewatering activities, respectively.
Electricity source	Grid supply from Olympic Dam via a dedicated 132 kV transmission line.
Electrical consumption	Up to 320 GWh per annum.
Greenhouse gas emissions	Greenhouse gas emissions have varied between 280,000–425,000 t of CO ₂ -e per annum (directly from the operation of mobile fleet, and indirectly from the consumption of purchased electricity) since the commencement of operations.
Employees	Prominent Hill has approximately 1500 employees visiting site per month on various fly-in fly-out rosters, with an average of approximately 600-650 personnel on-site at any one time, with increase up to approximately 1,100 for shutdowns.
Accommodation	On-site accommodation village with a total of 1,055 rooms available. Of these, 316 rooms are allocated to shutdowns and are not utilised during non-shutdown periods.
Workforce logistics	Regular flights operate between Prominent Hill, Adelaide and Port Augusta, with frequencies and additional specific locations as determined by business needs.

PH-ENV-REP-0346
MINING LEASE 6228 & ASSOCIATED
TENEMENTS COMPLIANCE REPORT 2017



PROMINENT HILL

7.0 PROJECT VARIATION SUMMARY

Table 7-1: Project Variation Summary for the Reporting Period

Description of Change to Mining Operation	Date Project Variation submitted to DPC or other regulatory agency	Document Control Number	Date regulatory authority endorsement received	Forward Works Plan <i>i.e Included in PEPR update?</i>
WRD Closure Profile: Refinement of closure profile for both WRD facilities.	9/3/2017	PH-ENV-ASS-0001	Pending following additional information	Original scope included in 2017 PEPR, further changes may be required.
IWL closure profile – access ramp	18/05/2017	PH-ENV-ASS-0002	25/05/2017	NA, details included in the PEPR 2017.

Details on previous project variations can be found within the PEPR 2017.

Table 7-2: Project Variation Undertaken in Previous Reporting Periods and Not Included in Latest PEPR

Description of Change to Mining Operation	Date Project Variation submitted to DPC or other regulatory agency	Document Control Number	Date regulatory authority endorsement received	Forward Works Plan <i>i.e Included in PEPR update?</i>
NA	Not applicable	Not applicable	Not applicable	Not applicable

PH-ENV-REP-0346
MINING LEASE 6228 & ASSOCIATED
TENEMENTS COMPLIANCE REPORT 2017



PROMINENT HILL

8.0 COMPLAINTS

Table 8-1: Complaints Received During the Reporting Period

Complaint Reference <i>Notes: Date, type (resident, general public etc.)</i>	Complaint Type <i>Notes: e.g. noise, dust or traffic complaint.</i>	Was the complaint as a result of PEPR non-compliance?	Resolution Date	Forward Works Plan <i>Notes: e.g. additional screening installed, or "NIL" if no evidence found to support complaint</i>
No complaints received during the reporting period relating to Lease Conditions, Outcomes or Compliance Criteria.	Not applicable	Not applicable	Not applicable	Not applicable

PH-ENV-REP-0346
MINING LEASE 6228 & ASSOCIATED
TENEMENTS COMPLIANCE REPORT 2017



PROMINENT HILL

9.0 COMPLIANCE SUMMARY

Table 9-1 summarises compliance for Prominent Hill in the reporting period. Further details can be found in Section 10.0.

Table 9-1: Compliance Summary for the Reporting Period

Licence Permit Tenement	Type of non-compliance <i>Notes: e.g. lease condition or environmental outcome</i>	Brief Description <i>Notes: e.g. Noise limits exceeded on 4 occasions</i>	Status <i>Notes: "Rectified" or "Currently being addressed"</i>	Section of Report for Further Detail
ML 6228 and associated tenements	One partial compliance against OMC for GC08	<p>Cultural heritage inspections have been completed (with photographs) and recorded on the cultural heritage database located on the OZ Minerals server.</p> <p>21 inspections are planned each reporting year to meet the PEPR inspection requirements. Of these, all but one have been completed (one Electricity Transmission Line inspection was progressively delayed on several occasions due to wet weather).</p> <p>One cultural heritage site was inadvertently disturbed as a result of a third party action. The disturbance was reported to the local Native Title group and a management resolution has been agreed.</p>	Currently being addressed	Section 10.0 & Section 18.0
ML 6228 and associated tenements	One non-compliance against OMC for GC 13 and GC14	A review of the land clearance register shows that in the reporting period seven applications for vegetation clearance occurred. Of these two were a procedural breach with clearing occurring prior to the granting of a permit, as outlined in the SEB Offset Area Management Plan (OZ Minerals 2016). In both instances these have been rectified immediately and information distributed across site on the formal process.	Resolved	Section 10.0 Table 10-3

PROMINENT HILL

10.0 COMPLIANCE TABLES

Table 10-1: Surface Water

Grouped Condition	Tenement No.	Environmental Outcome	Outcome Measurement Criteria Summary	Measurement Criteria Details					OMC Status	OMC Evidence	Leading indicator criteria	Leading indicator evidence	Forward works plan
				What will be measured and (method) of measurement	Locations	Outcome achievement	Frequency	Control or baseline data					
GC07	EML 6234, 6241	Water borne silt (or any other mining related contaminants) is contained on the mining lease EMLs.	Records of annual visual inspection of EMLs demonstrates that there is no visible sedimentation occurring outside the EML as a result of activities in the EML	Records of visual inspection including photographs taken at four corners of EML and areas in the EML where high runoff is detected	EML 6234 and 6241	No visible sedimentation occurring outside the EML as a result of activities in the EML	Annually	Not applicable	Not applicable	This is a new compliance criteria and will be addressed in the 2018 reporting period.	Not applicable	Not applicable	Not applicable
GC15	ML6228	No long-term adverse effect on aquatic fauna and habitat biodiversity (including riparian vegetation) due to generation of fugitive sediment	Annual sediment sampling at monitoring sites WA-2, WA-3, WW-1, WW-2, WW-3 and M1 demonstrate that concentrations of targeted heavy metals are in the 'low risk (no action)' category identified in the decision tree process in Figure 3.5.1 and Section 3.5 of the ANZECC/ARMCANZ (2000) sediment quality guidelines. (Note: Site WA-1 in the ML is also monitored as an internal lead indicator but is not a lead indicator or compliance site for the purpose of this PEPR).	Concentrations of targeted heavy metals will be measured in sediment through laboratory analysis of total metals (and analysis of acid extractable metals if assessment of bioavailability is required). The targeted metals comprise: - Aluminium, Arsenic, Barium, Beryllium, Cadmium, Copper, Lead, and Uranium (total only). At each location, four sediment samples will be collected at approximate 1m spacing in a square grid pattern. The four samples will be combined into one sample and analysed as a composite of that location.	Sediment sampling locations WA-2, WA-3, WW-1, WW-2, WW-3, M1-1 (Figure 7 3 in PEPR 2017). (WA-1 is also monitored as an internal lead indicator but is not a leading indicator or compliance site for the purpose of this PEPR).	Concentrations of targeted heavy metals are in the 'low risk (no action)' category identified in the decision tree process in Figure 3.5.1 and Section 3.5 of the ANZECC/ARMCANZ (2000) sediment quality guidelines (see Figure 7 2 in PEPR 2017). As per this ANZECC/ARMCANZ decision tree approach, the outcome is achieved if: <ul style="list-style-type: none">Concentrations of targeted heavy metals are below Interim Sediment Quality Guideline trigger values (ISQG-Low) identified in the ANZECC/ARMCANZ (2000) sediment quality guidelines, or where no guideline trigger value is specified, concentrations are below an adopted trigger value calculated in accordance with ANZECC/ARMCANZ (2000)); orIf the ISQG-Low trigger values are exceeded, concentrations of targeted heavy metals are below background concentrations; orIf ISQG-Low trigger values or adopted trigger values (where relevant) and background concentrations are exceeded, bioavailable concentrations (analysed as acid extractable metals) are below ISQG-Low trigger values or adopted trigger values (where relevant); orIf bioavailable concentrations exceed ISQG-Low trigger values or adopted trigger values, acute and chronic toxicity testing conducted in accordance with ANZECC/ARMCANZ (2000) demonstrates that concentrations are in the 'low risk (no action)' category.	Annually	See Table 7-3, Table 7-4, Table 7-5, Table 7-6 and Table 7-7 (in PEPR 2017). Appendix D in PEPR 2017 (ELA (2017a) - Prominent Hill Surface Water and Soil Monitoring Assessment and ELA (2017b) – Prominent Hill Surface Water and Sediment Sampling Recommendations). Where ISQG-Low trigger values are not specified in ANZECC/ARMCANZ (2000) for targeted heavy metals, trigger values have been calculated using twice the average of historical concentrations (i.e. data up to 2014) recorded at reference (no-effects) sites WW-1 and M1-1 in accordance with the recommendations outlined in ANZECC/ARMCANZ (2000).	Compliant	Sediment sampling was conducted during the reporting period. An analysis of these sediment sampling data against the ANZECC/ARMCANZ (2000) sediment quality guidelines results shows that none of the constituents analysed have exceeded trigger levels at the compliance sites (WA-2, WA-3, WW-1, WW-2, WW-3, M1).	Not applicable	Not applicable	Not applicable

PROMINENT HILL

Grouped Condition	Tenement No.	Environmental Outcome	Outcome Measurement Criteria Summary	Measurement Criteria Details					OMC Status	OMC Evidence	Leading indicator criteria	Leading indicator evidence	Forward works plan
				What will be measured and form of measurement	Locations	Outcome achievement	Frequency	Control or baseline data					
GC15	ML6228	No long-term adverse effect on aquatic fauna and habitat biodiversity (including riparian vegetation) due to spillages of miscellaneous chemicals	<p>Annual review of records demonstrates that releases (i.e. uncontrolled chemical or hydrocarbon spills) are contained and cleaned up according OZ Minerals procedures, as follows:</p> <ul style="list-style-type: none"> release is isolated (contained) and released material is soaked up or swept up and placed in disposal bags if release occurred on soil, soil is dug up until no visible or olfactory evidence of contamination is evident environmental department validates the clean up, prior to backfill, based on visual and olfactory observations that the full extent of impacted removal has been removed wastes from clean-up are disposed of in accordance with the Waste Management Plan release is recorded in InControl and where relevant, added to the operations Contaminated Sites Register for review prior to closure 	Record review - incident reports for spills (kept within the operations Contaminated Site Register).	Various	<p>Review of records demonstrates that releases (i.e. uncontrolled chemical or hydrocarbon spills) are contained and cleaned up according OZ Minerals procedures, as follows:</p> <ul style="list-style-type: none"> release is isolated (contained) and released material is soaked up or swept up and placed in disposal bags if release occurred on soil, soil is dug up until no visible or olfactory evidence of contamination is evident environmental department validates the clean up, prior to backfill, based on visual and olfactory observations that the full extent of impacted removal has been removed wastes from clean-up are disposed of in accordance with the Waste Management Plan <p>Release is recorded in InControl and where relevant, added to the operations Contaminated Sites Register for review prior to closure</p>	Annually	Not applicable	Compliant	<p>All spills which occur on site are recorded in the InControl risk management database. Records of these can be provided upon request.</p> <p>A review of these records indicates that all spills have been cleared up as per the outcome achievement criteria.</p>	Not applicable	Not applicable	Not applicable

PROMINENT HILL

Grouped Condition	Tenement No.	Environmental Outcome	Outcome Measurement Criteria Summary	Measurement Criteria Details					OMC Status	OMC Evidence	Leading indicator criteria	Leading indicator evidence	Forward works plan
				What will be measured and form of measurement	Locations	Outcome achievement	Frequency	Control or baseline data					
GC15	ML6228	No long-term adverse effect on aquatic fauna and habitat biodiversity (including riparian vegetation) due to seepage from the TSF	Compliance with sediment quality criteria as detailed for GC15 in Table 10-1 above. If leading indicator is triggered, further investigation (e.g. additional sampling, modelling of seepage extent and targeted inspections for indications of seepage (e.g. surface salinity, vegetation changes) indicates that seepage has not or is not likely to adversely affect aquatic fauna and habitat biodiversity (incl. riparian vegetation)	Refer to measurement criteria (sediment quality) detailed for GC15 in Table 10-1	Refer to measurement criteria (sediment quality) detailed for GC15 in Table 10-1.	Compliance with measurement criteria (sediment quality) detailed for GC15 in Table 10-1 If leading indicator is triggered, further investigation (e.g. additional sampling, modelling of seepage extent and targeted inspections for indications of seepage (e.g. surface salinity, vegetation changes) indicates that seepage has not or is not likely to adversely affect aquatic fauna and habitat biodiversity (incl. riparian vegetation)	Refer to measurement criteria (sediment quality) detailed for Impact 15.1 in PEPR 2017	Refer to measurement criteria (sediment quality) detailed for GC15 Table 10-1	Compliant	As for GC15 in Table 10-1	Quarterly monitoring of water level in shallow TSF monitoring wells (TSF-S1, TSF-S2, TSF-A, TSF-B, TSF-C) indicates TSF seepage mound is greater than 4 m below the ground surface.	All groundwater monitoring data is stored within the InViron database. A review of ground water data collected over the reporting period shows that the water level in the TSF wells has been maintained at a depth greater than 4 m below ground surface.	Not applicable
GC15	ML6228	No long-term adverse effect on aquatic fauna and habitat biodiversity (including riparian vegetation) due to ARD	Compliance with sediment quality criteria as detailed for GC15 in Table 10-1 above.	Record review - incident reports for spills (kept within the operations Contaminated Site Register).	Refer to measurement criteria (sediment quality) detailed for GC15 in Table 10-1.	Compliance with measurement criteria (sediment quality) detailed for Impact 15.1 in PEPR 2017.	Refer to measurement criteria (sediment quality) detailed for Impact 15.1 in PEPR 2017	Refer to measurement criteria (sediment quality) detailed for GC15 in Table 10-1.	Compliant	As for GC15 in Table 10-1	Review of records undertaken annually while WRDs operational confirm that NAF thicknesses of 10 m minimum surrounding PAF material has been maintained during operation.	OZ Minerals mine planning software Xpac, allows the operation to constrain, prioritise and drive the schedule of NAF and PAF dumping. PAF cells are encapsulated in NAF material as per PEPR 2017. No PAF material was mined in the current reporting period.	Not applicable



PROMINENT HILL

Grouped Condition	Tenement No.	Environmental Outcome	Outcome Measurement Criteria Summary	Measurement Criteria Details					OMC Status	OMC Evidence	Leading indicator criteria	Leading indicator evidence	Forward works plan
				What will be measured and form of measurement	Locations	Outcome achievement	Frequency	Control or baseline data					
GC15	ML6228	No long-term adverse effect on aquatic fauna and habitat biodiversity (including riparian vegetation) due to water from open pit and underground operations.	<p>Annual review of records demonstrates that pit water is not discharged to the environment as part of normal operating procedures.</p> <p>In the event that an emergency (controlled) discharge of pit water needs to occur, records to demonstrate that approval was obtained from DPC, and that pit water quality is was collected.</p>	Record review - pit water discharge records	Not applicable	<p>Annual review of records demonstrates that pit water is not discharged to the environment as part of normal operating procedures.</p> <p>In the event that an emergency (controlled) discharge of pit water needs to occur, records to demonstrate that approval was obtained from DPC, and that pit water quality was collected.</p>	Annually	Not applicable	Compliant	<p>All incidents and stakeholder communications are recorded in the InControl and InForm databases respectively.</p> <p>A review of these records show that there was no emergency discharge of Pit water to the environment during the reporting period.</p>	Not applicable	Not applicable	Not applicable

PROMINENT HILL

Table 10-2 Groundwater

Grouped Condition	Tenement No.	Environmental Outcome	Outcome Measurement Criteria Summary	Measurement Criteria Details					OMC Status	OMC Evidence	Leading indicator criteria	Leading Indicator evidence	Forward works plan
				What will be measured and form (method) of measurement	Locations	Outcome achievement	Frequency	Control or baseline data					
GC16	ML622 8 MPL 81, 82 MPL 91, 96, 97, 101 MPL 112 – 117	No reduction in groundwater flows to Great Artesian Basin springs due to project water extraction.	Measurement of groundwater pressure in Margaret Creek bore (half-yearly or at a frequency agreed with DEWNR and DPC in annual review of water licence compliance) do not indicate a decline that is attributable to Prominent Hill operations.	Groundwater pressure and water quality (pH, temperature and salinity).	Margaret Creek bore (see Figure 7 4 in PEPR 2017).	No observed decline in groundwater pressure that is attributable to Prominent Hill operations.	Half-yearly (groundwater pressure) and annually (water quality) or at a frequency agreed with DEWNR and DPC in annual review of water licence compliance	Average pressure readings between 101-105 kPa. Appendix C of PEPR 2017 (ELA (2017d) - Prominent Hill Copper-Gold Mine Conceptual hydrogeological model review)	Compliant	Monitoring of pressure at the Margret Creek bore show that there has been no change in pressure (105 kPa) over the reporting period, attributable to mining operations. These data have been reported to DEWNR under the conditions of Water Licence 41028 in the following report: PH-ENV-REP-0284 Prominent Hill Licence 41028 (OZ Minerals 2017a)	Not applicable	Not applicable	Not applicable
GC17 GC18	ML622 8 MPL 81, 82 MPL 112 - 117 MPL 91, 96, 97, 101	No reduction in groundwater quantity and/or quality to existing third-party users of the Boorthanna Formation aquifer resulting in a loss of ability to operate pastoral station due to project water abstraction.	Where a decline in standing water levels and/or water quality is observed in third party monitoring wells within the Boorthanna formation (monitored quarterly) and investigations indicate that the decline is attributable to Prominent Hill operations, measures to ensure that the decline will not impact the ability to economically operate the pastoral lease have been implemented to the satisfaction of the landholder or as agreed with DPC.	Standing water levels and water quality (pH, temperature and salinity). Record review - communications register within the InForm database.	Third party monitoring wells within the Boorthanna Formation aquifer (see Figure 7 4 in PEPR 2017). Wells include: No. 2 Monwell, No. 6 Bore, Woolshed Monwell, CH1 (Walsh's Well), CH2, Homestead Monwell.	Where a decline in standing water levels and/or water quality occurs (and investigations indicate that the decline is attributable to Prominent Hill operations), measures to ensure that the decline will not impact the ability to economically operate the pastoral lease have been implemented to the satisfaction of the landholder or as agreed with DPC.	Quarterly (as agreed in Land Access Agreements. Requirement in Water Licence 41028 Management Plans with DEWNR is half-yearly).	Baseline survey of third party-party properties undertaken in 2007 as outlined in Land Access Agreements between OZ Minerals and existing users. Table 7-10 in PEPR 2017. Appendix C in PEPR 2017 (ELA (2017d) - Prominent Hill Copper-Gold Mine Conceptual hydrogeological model review)	Compliant	Groundwater monitoring of water levels and water quality at the locations stated show that there had not been a reduction in ground water levels or quality which has resulted in a reduction in ability to economically operate the pastoral lease. These data have been reported to DEWNR under the conditions of Water Licence 41028 in the following report: PH-ENV-REP-0284 Prominent Hill Licence 41028	Not applicable	Not applicable	Not applicable

PROMINENT HILL

Grouped Condition	Tenement No.	Environmental Outcome	Outcome Measurement Criteria Summary	Measurement Criteria Details					OMC Status	OMC Evidence	Leading indicator criteria	Leading Indicator evidence	Forward works plan
				What will be measured and form (method) of measurement	Locations	Outcome achievement	Frequency	Control or baseline data					
		No reduction in groundwater quantity and/or quality to existing third-party users of the non-artesian Eromanga aquifer due to project water abstraction.	Half-yearly measurement of standing water levels and water quality in third party monitoring wells (quarterly for DW02, BK Homestead Bore, No. 6 Monwell S) within the non-artesian Eromanga aquifer (see Figure 7 4 in PEPR 2017) demonstrates that any decline in available drawdown or increase in salinity does not exceed the relevant agreed criteria (refer to Outcome Achievement column) or If a decline in available drawdown or increase in salinity exceeding the relevant criteria is identified, records or report describing further investigation undertaken demonstrates that the exceedance of the relevant criteria for available drawdown or salinity is not attributable to Prominent Hill operations.	Standing water levels and water quality (pH, temperature and salinity).	Third party monitoring wells within the non-artesian Eromanga aquifer (see Figure 7 4 in PEPR 2017). Wells include: Sugarloaf Well, North Well, New Mudla Monwell, No. 6 Monwell S, BK Homestead Bore, ASMW03, ASMW04, Baldhill Solar Bore, Baldhill W/M Bore, Bucklands Bore, Banjo's Bore, Twins Well, Pipeline Dam Bore, DW02.	No decline in available drawdown attributable to Prominent Hill operations greater than the following: <ul style="list-style-type: none"> for a well which has an available drawdown of less than 2 m, 50 cm of water level decline.. for a well which has an available drawdown between 2 and 5 m, 1 m of water level decline. for a well which has an available drawdown between 5 and 10 m, 1.5 m of water level decline. for a well which has an available drawdown of greater than 10 m, 2 m of water level decline. Increase in salinity is within 20% of baseline. If a decline in available drawdown or increase in salinity exceeding the relevant criteria above is identified, records or report describing further investigation undertaken demonstrates that the exceedance of the relevant criteria for available drawdown or salinity is not attributable to Prominent Hill operations.	Half-yearly (as agreed in Land Access Agreements and the Water Licence 41028 Management Plans with DEWNR), with the exception of DW02, BK Homestead Bore and No. 6 Monwell S which are undertaken quarterly (as agreed with the Water Licence 183346 Management Plan).	Baseline survey of third party-party properties undertaken in 2007 as outlined in Land Access Agreements between OZ Minerals and existing users, with the exception of wells on Mt Eba which had salinity agreed in 2016. Table 7-10 in PEPR 2017. Appendix C in PEPR 2017 (ELA (2017d) - Prominent Hill Copper-Gold Mine Conceptual hydrogeological model review)	Compliant	Monitoring of groundwater levels and water quality at the locations stated show no reduction in water quality or quantity within the non-artesian Eromanga Aquifer compared to the baseline. These data have been reported to DEWNR under the conditions of Water Licence 183346 and 41028 in the following reports: PH-ENV-REP-0283 Prominent Hill Compliance Report 2017 Water Licence 183346 (OZ Minerals (2017b) and PH-ENV-REP-0345 2017 Prominent Hill Compliance Report 2017 Water Licence 41028 (OZ Minerals 2016a).	Not applicable	Not applicable	Not applicable

PROMINENT HILL

Grouped Condition	Tenement No.	Environmental Outcome	Outcome Measurement Criteria Summary	Measurement Criteria Details					OMC Status	OMC Evidence	Leading indicator criteria	Leading Indicator evidence	Forward works plan
				What will be measured and form (method) of measurement	Locations	Outcome achievement	Frequency	Control or baseline data					
GC17	ML6228	No reduction in groundwater quality affecting suitability for water uses (potable use and agricultural use) due to seepage from TSF or acid rock drainage from the IWL	<p>Water quality data in monitoring wells outside the TSF is consistent over time (assessed using a rolling 24-month 95th percentile assessment, or a robust statistical assessment subsequently developed across any sites that exhibit any variable trends or data inconsistencies). If changes in water quality data over time are detected by this assessment, further investigation (or modelling of seepage extent) undertaken by an independent groundwater consultant demonstrates that TSF seepage or ARD from the IWL has not or is not likely to result in off-site impacts to groundwater quality that would affect its suitability for water uses (potable use and/or pastoral use).</p> <p>Monitoring wells, frequency and parameters measured are:</p> <ul style="list-style-type: none"> Deep TSF wells (TSF-D, TSF-E) - half yearly monitoring for field parameters (EC, pH, Eh, DO, alkalinity, water table) Shallow wells (TSF-S1, TSF-S2, TSF-A, TSF-B, TSF-C) quarterly monitoring with a broad analyte suite: (Metals dissolved and total - Ag, As, B, Cd, Co, Cr, Cu, Mn, Mo, Sb, Se, Sn, Sr, Vn, Zn, U, Major Ions - Ca, K, CL, HCO₃-, SO₄, pH, TDS, EC). Suite to be reassessed after one year of monitoring in 2018 compliance report. <p>(Note: process water sites (Pit water S09 ramp, Raw water dam, Environmental pond, TSF Finger) are also monitored quarterly to aid analysis but not as a compliance site for the purpose of this PEPR).</p>	<p>Deep TSF wells - half yearly monitoring for field parameters (EC, pH, Eh, DO, alkalinity, water table). If field parameters monitored at deep TSF wells show statistical change then laboratory sampling (consistent with the shallow bores) would be conducted.</p> <p>Shallow wells and process water monitoring sites - quarterly monitoring with a broad analyte suite: (Metals dissolved and total - Ag, As, B, Cd, Co, Cr, Cu, Mn, Mo, Sb, Se, Sn, Sr, Vn, Zn, U, Major Ions - Ca, K, CL, HCO₃-, SO₄, pH, TDS, EC). Suite to be reassessed after one year of monitoring in 2018 compliance report.</p>	<p>Deep TSF wells (TSF-D, TSF-E) Shallow wells (TSF-S1, TSF-S2, TSF-A, TSF-B, TSF-C)</p> <p>(Note: process water sites (Pit water S09 ramp, Raw water dam, Environmental pond, TSF Finger) are also monitored quarterly to aid analysis but not as a compliance site for the purpose of this PEPR). See Figure 7.5 in PEPR 2017.</p>	<p>Water quality data in monitoring wells outside the TSF is consistent over time (assessed using a rolling 24-month 95th percentile assessment, or a robust statistical assessment subsequently developed across any sites that exhibit any variable trends or data inconsistencies). If changes in water quality data over time are detected by this assessment, further investigation (or modelling of seepage extent) undertaken by an independent groundwater consultant demonstrates that TSF seepage or ARD from the IWL has not or is not likely to result in off-site impacts to groundwater quality that would affect its suitability for water uses (potable use and/or pastoral use).</p>	<p>Deep wells - half yearly Shallow wells - quarterly</p>	<p>Rolling baseline over the preceding two years for all samples</p> <p>Historical information can be found in Appendix I in PEPR 2017 and ELA (2017b) - Prominent Hill TSF Water Quality Assessment.</p>	Compliant	<p>This is a new compliance criteria and will be addressed in the 2018 reporting period. Quarterly sampling of the TSF monitoring wells has been undertaken analysis of these data was undertaken as part of the PEPR 2017 process. This analysis found that there had not been a change to groundwater quality, which could affect its suitability for other users.</p>	<p>Review of records undertaken annually while WRDs operational confirm that NAF thicknesses of 10 m minimum surrounding PAF material has been maintained during operation.</p>	<p>OZ Minerals mine planning software Xpac, allows the operation to constrain, prioritise and drive the schedule of NAF and PAF dumping. PAF cells are encapsulated in NAF material as per PEPR 2017.</p> <p>No PAF material was mined in the current reporting period.</p>	Not applicable
										<p>Annual external third-party audit of operational TSF report confirms that the freeboard has been maintained at 300 mm minimum during operation.</p>	<p>Tailings Storage Facility Annual Operational Audit 2016 (SMEC 2016) completed in February 2017 demonstrated the TSF maintained the 300mm minimum freeboard.</p>		

PROMINENT HILL

Table 10-3: Flora and Fauna Measurement Criteria and Leading Indicator Criteria

Grouped Condition	Tenement No.	Environmental Outcome	Outcome Measurement Criteria Summary	Measurement Criteria Details					OMC Status	OMC evidence	Leading indicator criteria	Leading Indicator evidence	Forward works plan
				What will be measured and form (method) of measurement	Locations	Outcome achievement	Frequency	Control or baseline data					
GC13 GC14	ML6228 MPL 81, 82 MPL 119 - 122 MPL 93 - 94 MPL 112 - 117 EML 6234, 6236 – 6242 MPL 91, 96, 97, 101 EML 6278 - 6296, 6299 - 6301	No loss of abundance or diversity of native vegetation, or reduction in habitat quality, on or off the Mining and or miscellaneous purposes lease areas during construction, operation and post mine completion through: <ul style="list-style-type: none">land clearance,dust/contaminant deposition,fire,reduction in, or introduction of, water supply, orother damage, unless prior approval under relevant legislation is obtained and environmental offsets are approved and in place.	Annual monitoring during autumn at permanent monitoring quadrats and transects located within impact and replicate control sites remote from mining activity demonstrates no loss of abundance or diversity of native vegetation, or reduction in habitat quality by comparison with historic data, and between control and impact sites. The lease conditions and outcome have been met if there is no sustained significant difference between control and impact sites. If an adverse change at impact sites without a commensurate change at control sites is detected, compliance with the lease conditions and outcome will be determined by undertaking an assessment of impacted sites against comparable sites outside of the SEB area, to assess whether impacts detected represent a reduction in habitat condition beyond the pre-mine condition (i.e. impacts beyond any net benefit gained from establishment of the SEB). Sites and method to be determined if leading indicator is triggered.	Habitat Quality Indicators including vegetation and soils (representing broader ecosystem function) 100 x 100m VEGETATION QUADRATS (Biol. Survey Method) <ul style="list-style-type: none">identification of all species present (species diversity/richness, inclusive of annuals)cover (%) of individual speciesspecies identified as recruiting. 10 x 2m SUB PLOT within VEGETATION QUADRAT. For each 1 x 1m unit of sub-plot <ul style="list-style-type: none">estimate of % grass cover (ephemerals, annuals)estimate of % bare groundestimate of % litter cover within the plotestimate of % surface crustcounts of recruits (all shrubs) to provide recruitment scorelong lived perennials (over and under storey) via species abundance counts (density) for both juveniles and adults. Panoramic photographs collected to aid in assessment of vegetation cover for recruitment. Observational data to be collected at all sites including (but not limited to) vehicle tracks, erosion, vegetation clearing, distance to mine site, light, dust, inappropriate access, feral animals and weeds.	See Figure 7 6 in PEPR 2017. Assessment will be undertaken at a series of permanent impact sites (adjacent to mining operations) and control sites (replicate sites remote from mining operations but within SEB) to enable comparison between potential mine related activities and seasonal variations. Sites selected in representative habitats for key fauna species, including EPBC and NPW listed species, and to be representative of the broad vegetation community types present within the ML, MPL and SEB areas. Impact sites (PH01, PH02, PH03a, PH10, PH12, PH 13a, PH 15, PH19, PH22, PH23) and control sites (PH06, PH07, PH11, PH16, PH17, PH18, PH20, PH24, PH25, PH27)	Analysis of temporal data indicates no sustained adverse change to habitat quality (aside from that which has been previously approved) which can be attributed to mine related activities. Target variables indicate no sustained significant difference between control and impact sites, including: <ul style="list-style-type: none">Mean perennial species abundanceMean perennial species richnessMean total species diversityMean recruitment index scoresMean soil and ecosystem function scores If an adverse change at impact sites without a commensurate change at control sites is detected, compliance with the lease conditions and outcome will be determined by undertaking an assessment of impacted sites against comparable sites outside of the SEB area, to assess whether impacts detected represent a reduction in habitat condition beyond the pre-mine condition (i.e. impacts beyond any net benefit gained from establishment of the SEB). Sites and method to be determined if leading indicator triggered.	Annually during Autumn. Autumn survey to capture growth following summer rainfalls - measure seasonal response to summer bias rainfall Annual (for review of records of land clearance)	REP021 Prominent Hill Analysis of Flora and Fauna Monitoring Data 2007 to Spring 2012 Other Flora survey reports, conducted at the site biannually between 2007 and 2016. Comparable data up until methodology changes in 2015. Historical information can be found in Appendix E of PEPR 2017 (Jacobs 2017) - 2017 Review of Prominent Hill Ecological Monitoring.	Compliant	Annual monitoring with revised PEPR 2017 methodology was undertaken in Autumn 2017. Due to the new methodology and sites selection employed this year, these data will form the baseline for subsequent year's analysis to determine any significant sustained difference between impact and control sites.	Reduction of perennial species abundance (counts) at impact sites without a corresponding reduction at control sites over three consecutive monitoring periods. Suppression of recruitment indicated by a reduction in recruitment index scores at impact sites without a corresponding reduction at control sites over three consecutive monitoring periods. An increase in bare ground and/or scald/erosion % cover at impact sites without a corresponding reduction at control sites over three consecutive monitoring periods. If leading indicator triggered, further assessment of detected impacts vs pre-mine condition by comparison with sites outside of SEB area required to determine non-compliance with lease condition.	Due to the new methods adopted these results will form the baseline for subsequent years. The following observations were made in relation to the leading indicator criteria: <ul style="list-style-type: none">Results indicate there is a higher species abundance within control sites compared to impact sites.Recruitment scores are considerably higher at the impact sites compared to the control sites across all three vegetation types.Bare ground overall averaged less at control sites than impact sites across all three vegetation types.No erosion was recorded at the survey sites inside or outside the ML.	Not applicable

PROMINENT HILL

Grouped Condition	Tenement No.	Environmental Outcome	Outcome Measurement Criteria Summary	Measurement Criteria Details					OMC Status	OMC evidence	Leading indicator criteria	Leading Indicator evidence	Forward works plan
				What will be measured and form (method) of measurement	Locations	Outcome achievement	Frequency	Control or baseline data					
			Annual review of Land Clearance Register shows that any new vegetation clearance is undertaken in accordance with the Stage 2 SEB Offset Area Management Plan (including provision of adequate offset by the offset credit detailed in the plan or additional payment to the Native Vegetation Fund).	Record review - Land Clearance Register	As required.	Review of Land Clearance Register shows that any new vegetation clearance is undertaken in accordance with the Stage 2 SEB Offset Area Management Plan (including provision of adequate offset by the offset credit detailed in the plan or additional payment to the Native Vegetation Fund).	As required.	Not applicable.	Non-compliant	A review of the land clearance register shows that in the reporting period seven applications for vegetation clearance occurred and of these two were a procedural breach with clearing occurring prior to the granting of a permit, as outlined in the SEB Offset Area Management Plan (OZ Minerals 2016). In both instances these have been rectified immediately and information distributed across site on the formal process.	Not applicable	Not applicable	Not applicable
GC12	ML6228 MPL 81, 82 MPL 119 – 122 MPL 93 - 94 MPL 91, 96, 97, 101 EML 6278 - 6296, 6299 – 6301 EML 6234, 6236 – 6242 MPL 112 – 117	No loss of abundance or diversity of native vegetation, or reduction in habitat quality, on or off the Mining and or miscellaneous purposes lease areas during construction, operation and post mine completion through: <ul style="list-style-type: none"> land clearance, dust/contaminant deposition, fire, reduction in, or introduction of, water supply, or other damage, 	Refer to criteria for GC 13 above	Refer to criteria for GC 13 above	Refer to criteria for GC 13 above	Refer to criteria for Impact 13 above	Refer to criteria for GC 13 above	Refer to criteria for GC 13 above	Compliant	As for GC13 above	Refer to criteria for GC 13 above	As for GC 13 above	Not applicable

PROMINENT HILL

Grouped Condition	Tenement No.	Environmental Outcome	Outcome Measurement Criteria Summary	Measurement Criteria Details					OMC Status	OMC evidence	Leading indicator criteria	Leading Indicator evidence	Forward works plan
				What will be measured and form (method) of measurement	Locations	Outcome achievement	Frequency	Control or baseline data					
		unless prior approval under relevant legislation is obtained and environmental offsets are approved and in place.											
GC64	ML6228 MPL 81, 82 MPL 119 – 122 MPL 93 – 94 MPL 112 – 117 MPL 91, 96, 97, 101 EML 6278 – 6296, 6299 – 6301 EML 6234, 6236 – 6242 MPL 81, 82 MPL 86, 87, 88, 89, 90, 102 and 103 EML 6278 – 6296, 6299 – 6301 EML 6234, 6236 – 6242	No introduction of new species of weeds, plant pathogens or pests (including feral animals), nor sustained increase in abundance of existing weed or pest species in the licence area compared to adjoining land as a result of mining operations.	Annual review of records of weed monitoring and control (where required) demonstrate compliance with Section 3.4 of Stage Two Significant Environmental Benefit Offset Area Management Plan as endorsed by the Native Vegetation Council.	Records of counts and identification of any declared weed infestations observed along transects at each location. Records of weed control actions implemented (where relevant). Records of feral animal control.	Five weed monitoring locations numbered 1-5 (see Figure 7 7 in PEPR 2017).	Records demonstrate compliance with Section 3.4 of Stage Two Significant Environmental Benefit Offset Area Management Plan as endorsed by the Native Vegetation Council.	Annually	PH-ENV-REP-0500 Stage Two Significant Environmental Benefit Offset Area Management Plan (OZ Minerals 2016b) REP021 Prominent Hill Analysis of Flora and Fauna Monitoring Data 2007 to Spring 2012. Other Flora and Fauna survey reports, conducted at the site biannually between 2007 and 2016.	Compliant	Weed monitoring was completed as part of the Autumn 2017 Flora Survey (ELA 2017a) both inside and outside the ML. The monitoring shows that weed species observed this period are significantly lower than previous years. Control measures (spraying and hand pulling) have been put in place to control and eradicate any new weed populations identified in previous surveys. Feral animal control (baiting) occurred in Autumn 2017, with cat trapping occurring periodically throughout the reporting period. Records can be provided on request.	Not applicable	Not applicable	Not applicable

PROMINENT HILL

Table 10-4 Radiation and Air Quality Measurement Criteria and Leading Indicator Criteria

Grouped Condition	Tenement No.	Environmental Outcome	Outcome Measurement Criteria Summary	Measurement Criteria Details					OMC Status	OMC evidence	Leading indicator criteria	Leading indicator evidence	Forward works plan	
				What will be measured and form (method) of measurement	Locations	Outcome achievement	Frequency	Control or baseline data						
Radiation														
GC46	ML 6228	No adverse impacts on flora and fauna due to the release or accumulation of radionuclides into the environment.	Annual review of compliance reporting under the <i>Radiation and Protection Control Act 1982</i> and associated facilities licence demonstrates compliance with facilities licence.	Record review – compliance reporting under the <i>Radiation and Protection Control Act 1982</i> and associated facilities licence	Not applicable	Reporting demonstrates compliance with facilities licence.	Annual	Not applicable	Complaint	Annual Radiation Protection Report (OZ Minerals 2017a) has been submitted to the EPA demonstrating compliance with the facilities licence. Radiation Management Plan (OZ Minerals 2017b) in place.	Not applicable	Not applicable	Not applicable	
Air Quality														
GC11	MPL 81, 82 MPL 119 – 122 MPL 93 - 94 MPL 112 - 117 MPL 91, 96, 97, 101 EML 6278 - 6296, 6299 – 6301 EML 6234, 6236 - 6242	No significant nuisance impacts due to dust as a result of project activities. (A significant nuisance impact is considered to be one that generates a complaint that is attributable to project activities and cannot be addressed within the timeframes specified in the measurement criteria.)	Annual review of complaints register demonstrates that in respect of complaints relating to dust impacts from project activities: <ul style="list-style-type: none">complaint initially responded to within 5 business daysissues underlying complaint are currently/have been investigated, causes identified, complaint closed and corrective actions implemented within a reasonable period or other time frame agreed by DPC and/or complainant.	Record review - complaints register within database InForm (complaints relating to dust impacts from project activities)	Not applicable	<ul style="list-style-type: none">complaint initially responded to within 5 business daysissues underlying complaint are currently/have been investigated, causes identified, complaint closed and corrective actions implemented within a reasonable period or other time frame agreed by DPC and/or complainant.	Annually	Not applicable	Complaint	A review of the InForm Stakeholder Compliance Management System shows no complaints have been received relating to dust over this reporting period.	Not applicable	Not applicable	Not applicable	

PROMINENT HILL

Table 10-5 Land Use Measurement Criteria and Leading Indicator Criteria

Grouped Condition	Tenement No.	Environmental Outcome	Outcome Measurement Criteria Summary	Measurement Criteria Details					OMC Status	OMC Evidence	Leading indicator criteria	Leading indicator evidence	Forward works plan
				What will be measured and form (method) of measurement	Locations	Outcome achievement	Frequency	Control or baseline data					
GC06	ML6228 MPL 81, 82 MPL 119 – 122 MPL 93 – 94 MPL 112 – 117 MPL 91, 96, 97, 101 EML 6278 – 6296, 6299 – 6301 EML 6234, 6236 – 6242	No long-term soil contamination that would compromise agreed future land uses.	Annual review of records demonstrates that releases (i.e. uncontrolled chemical or hydrocarbon spills) are contained and cleaned up according OZ Minerals procedures, as follows: <ul style="list-style-type: none"> release is isolated (contained) and released material is soaked up or swept up and placed in disposal bags if release occurred on soil, soil is dug up until no visible or olfactory evidence of contamination is evident environmental department validates the clean up, prior to backfill, based on visual and olfactory observations that the full extent of impacted removal has been removed wastes from clean-up are disposed of in accordance with the Waste Management Plan release is recorded in InControl and where relevant, added to the operations Contaminated Sites Register for review prior to closure. 	Record review - incident reports for spills	Various	Review of records demonstrates that releases (i.e. uncontrolled chemical or hydrocarbon spills) are contained and cleaned up according OZ Minerals procedures, as follows: <ul style="list-style-type: none"> release is isolated (contained) and released material is soaked up or swept up and placed in disposal bags if release occurred on soil, soil is dug up until no visible or olfactory evidence of contamination is evident environmental department validates the clean up, prior to backfill, based on visual and olfactory observations that the full extent of impacted removal has been removed wastes from clean-up are disposed of in accordance with the Waste Management Plan release is recorded in InControl and where relevant, added to the operations Contaminated Sites Register for review prior to closure. 	Annually	Not applicable	Complaint	As for GC15 in Table 10-1.	Not applicable	Not applicable	Not applicable
GC65	ML6228 MPL 81, 82 MPL 119 – 122 MPL 93 – 94 MPL 112 – 117	No adverse impacts to Department of Defence operations within the Woomera Prohibited Area (WPA).	Annual review of records demonstrates no breaches of the deed with DoD or if a breach has occurred that it was notified within 7 days and it can be demonstrated that the necessary steps were taken to rectify and prevent that breach from occurring again.	Record review - communications register within the InForm database.	Not applicable	Annual review of records demonstrates no breaches of the deed with DoD or if a breach has occurred that it was notified within 7 days and it can be demonstrated that the necessary steps were taken to rectify and prevent that breach from occurring again.	Annually	Not applicable	Complaint	A review of the InForm stakeholder communications database shows there were no breaches of the deed with DoD during the reporting period.	Not applicable	Not applicable	Not applicable

PROMINENT HILL

Grouped Condition	Tenement No.	Environmental Outcome	Outcome Measurement Criteria Summary	Measurement Criteria Details					OMC Status	OMC Evidence	Leading indicator criteria	Leading indicator evidence	Forward works plan
				What will be measured and form (method) of measurement	Locations	Outcome achievement	Frequency	Control or baseline data					
	MPL 91, 96, 97, 101 EML 6278 - 6296, 6299 – 6301 EML 6234, 6236 - 624												

Table 10-6 Roads, Traffic and Other Infrastructure Measurement Criteria and Leading Indicator Criteria

Grouped Condition	Tenement No.	Environmental Outcome	Outcome Measurement Criteria Summary	Measurement Criteria Details					OMC Evidence	OMC evidence	Leading indicator criteria	Leading indicator evidence	Forward works plan
				What will be measured and form (method) of measurement	Locations	Outcome achievement	Frequency	Control or baseline data					
GC19 GC20	ML6228 EML 6234, 6236 – 6242 MPL 81, 82 MPL 119 – 122 MPL 93 – 94 MPL 112 – 117 MPL 91, 96, 97, 101	No significant adverse impacts on pastoral roads, public roads, traffic and other infrastructure.	Annual review of complaints register demonstrates that in respect of complaints relating to impacts to roads, traffic and other infrastructure from project activities: <ul style="list-style-type: none"> complaint initially responded to within 5 business days issues underlying complaint are currently/have been investigated, causes identified, complaint closed and corrective actions implemented within a reasonable period or other time frame agreed by DPC and/or complainant. 	Record review - communications register within InForm database (complaints relating to impacts to roads, traffic and other infrastructure from project activities)	Not applicable	<ul style="list-style-type: none"> complaint initially responded to within 5 business days issues underlying complaint are currently/have been investigated, causes identified, complaint closed and corrective actions implemented within a reasonable period or other time frame agreed by DPC and/or complainant. 	Annually	None	Compliant	A review of the InForm Stakeholder Communications Database shows there have been no complaints relating to adverse impacts to pastoral roads, traffic and infrastructure during the reporting period.	Not applicable	Not applicable	Not applicable

PROMINENT HILL

Table 10-7 Indigenous and Non-Indigenous Cultural Heritage Measurement Criteria and Leading Indicator Criteria

Grouped Condition	Tenement No.	Environmental Outcome	Outcome Measurement Criteria Summary	Measurement Criteria Details					OMC Status	OMC Evidence	Leading indicator criteria	Leading indicator evidence	Forward works plan
				What will be measured and form (method) of measurement	Locations	Outcome achievement	Frequency	Control or baseline data					
GC08	ML6228 MPL 81, 82 MPL 119 – 122 MPL 93 – 94 MPL 112 – 117: MPL 91, 96, 97, 101 EML 6278 – 6296, 6299 – 6301 EML 6234, 6236 – 6242	No disturbance to indigenous and non-indigenous artefacts or sites of significance unless it is authorised under the relevant legislation (<i>Aboriginal Heritage Act 1988</i> or <i>Heritage Places Act 1993</i>).	Review of new land disturbance demonstrates that all land disturbing activities are within areas subject to cultural heritage clearance. Quarterly inspection of identified cultural heritage sites (annual for sites on electrical transmission line) demonstrates that sites have not been disturbed by project operations. Review of records demonstrate that work ceased in the immediate area of any discovery of Aboriginal artefacts or sites, appropriate authorities were advised, and work recommenced only after necessary authorisation under the <i>Aboriginal Heritage Act 1998</i> was obtained.	Desktop and field audit of new land disturbance Photo monitoring - condition of identified sites . Review of records - incident reports of discovery of indigenous sites.	New land disturbance sites Identified sites (site name and location has not been provided in the PEPR to maintain confidentiality with the native title groups. Discovered sites	Land disturbance is within areas subject to cultural heritage clearance No disturbance to identified sites attributable to project operations Records demonstrate that work ceased in the immediate area of discovery, appropriate authorities were advised, and work recommenced only after necessary authorisation under the <i>Aboriginal Heritage Act 1998</i> was obtained.	On event Quarterly except electrical transmission line (annual) On event	Not applicable Photographic record of identified sites Not applicable	Partially compliant	Cultural heritage inspections have been completed (with photographs) and recorded on the cultural heritage database located on the OZ Minerals server. 21 inspections are planned each reporting year to meet the PEPR inspection requirements. Of these, all but one have been completed (one Electricity Transmission Line inspection was progressively delayed on several occasions due to wet weather). One cultural heritage site was inadvertently disturbed as a result of a third party action. The disturbance was reported to the local Native Title group and a management resolution agreed.	Not applicable	Not applicable	Conduct cultural heritage inspection of the Electricity Transmission Line during Q1 of next reporting period, in addition to the 2017/18 inspection requirement. Further cultural heritage awareness and training program to be developed See Section 18 Forward Works Plan Numbers 5 & 6.

PROMINENT HILL

Table 10-8 Summary of Grouped Lease Conditions with Corresponding Environmental Outcomes

Grouped Condition No.	Grouped Lease Conditions	Corresponding Environmental Outcome (see Table 7-1 in PEPR 2017 for details)	Status	Evidence
GC06	The Lessee must, in constructing, operating and post mine closure of ensure there is no post-closure soil contamination.	No long-term soil contamination that would compromise agreed future land uses	Compliant	Contaminated site register holds all contamination information, possible subsequent investigation to be managed at closure.
GC07	The Lessee of active Extractive Mineral Leases (EMLs) must ensure that all water borne silt (or any other mining related contaminants) be contained on the mining lease EMLs.	Water borne silt (or any other mining related contaminants) is contained on the mining lease EMLs.	Compliant	As for GC07 in Table 10-1
GC08	The Lessee/Licensee must, in constructing, operating the lease/licence, ensure there is no disturbance to indigenous and non-indigenous artefacts or sites of significance unless prior approval under the relevant legislation (<i>Aboriginal Heritage Act 1988</i> or <i>Heritage Places Act 1993</i>) is obtained.	No disturbance to indigenous and non-indigenous artefacts or sites of significance unless it is authorised under the relevant legislation (<i>Aboriginal Heritage Act 1988</i> or <i>Heritage Places Act 1993</i>).	Partially Compliant	As for GC08 in Table 10-7
GC11	The Lessee/Licensee must ensure that dust from the operation be effectively controlled and managed.	No significant nuisance impacts due to dust as a result of project activities.	Compliant	As for GC11 Table 10-4
GC12	The Lessee/Licensee must, in constructing, operating the lease/licence, and post mine closure, ensure there is no significant adverse impact to the abundance and diversity of threatened or non-threatened native fauna species.	No loss of abundance or diversity of native vegetation, or reduction in habitat quality, on or off the Mining and or miscellaneous purposes lease areas during construction, operation and post mine completion through: <ul style="list-style-type: none"> land clearance, dust/contaminant deposition, fire, reduction in, or introduction of, water supply, or other damage, unless prior approval under relevant legislation is obtained and environmental offsets are approved and in place.	Compliant	As for GC14 in Table 10-3
GC13	The Lessee must, in constructing, operating and post mine closure ensure there is no avoidable disturbance to vegetation.	As above	Complaint	As for GC14 in Table 10-3 and As for GC08 in Table 10-7
GC14	The Lessee/Licensee must, in constructing, operating and lease/licence, and post mine closure, ensure there is no significant adverse impact on the abundance and diversity of threatened or non-threatened native flora species or communities	As above	Compliant	As for GC12
GC15	The Lessee must, in constructing, operating and post mine closure ensure no long-term adverse effect on aquatic fauna and habitat biodiversity (including riparian vegetation) due to: <ul style="list-style-type: none"> generation of fugitive sediment miscellaneous chemicals altered flow regime seepage from Tailings Storage Facility seepage from the process water dam Acid Rock Drainage pit water. 	No long-term adverse effect on aquatic fauna and habitat biodiversity (including riparian vegetation) due to generation of fugitive sediment No long-term adverse effect on aquatic fauna and habitat biodiversity (including riparian vegetation) due to spillages of miscellaneous chemicals No long-term adverse effect on aquatic fauna and habitat biodiversity (including riparian vegetation) due to seepage from the TSF No long-term adverse effect on aquatic fauna and habitat biodiversity (including riparian vegetation) due to ARD No long-term adverse effect on aquatic fauna and habitat biodiversity (including riparian vegetation) due to water from open pit and underground operations.	Complaint	As for GC15 in Table 10-1
GC16	The Lessee must, in constructing, operating and post mine ensure there is no reduction in groundwater flows to Great Artesian Basin springs due to project water extraction.	No reduction in groundwater flows to Great Artesian Basin springs due to project water extraction.	Compliant	As for GC 16 in Table 10-2

PROMINENT HILL

Grouped Condition No.	Grouped Lease Conditions	Corresponding Environmental Outcome (see Table 7-1 in PEPR 2017 for details)	Status	Evidence
GC17	The Lessee must, in constructing, operating and post mine closure ensure that is no reduction in the quantity and quality of water for existing users.	No reduction in groundwater quantity and/or quality to existing third-party users of the Boorthanna Formation aquifer resulting in a loss of ability to operate pastoral station due to project water abstraction. No reduction in groundwater quantity and/or quality to existing third-party users of the non-artesian Eromanga aquifer due to project water abstraction. No reduction in groundwater quality affecting suitability for water uses (potable use and agricultural use) due to seepage from TSF or acid rock drainage from the IWL	Compliant	As for GC17 and 18 detailed inTable 10-2
GC18	The Licensee must, in constructing and operating the Miscellaneous Purposes Licences, ensure that there is no adverse impact to the quality and quantity of groundwater and or surface water caused by mining operations to existing users and water dependent ecosystems.	No reduction in groundwater quantity and/or quality to existing third-party users of the Boorthanna Formation aquifer resulting in a loss of ability to operate pastoral station due to project water abstraction. No reduction in groundwater quantity and/or quality to existing third-party users of the non-artesian Eromanga aquifer due to project water abstraction.	Compliant	As for GC17 and 18 detailed inTable 10-2
GC19	The Lessee must, in constructing, operating and post mine closure ensure no significant adverse impacts on public roads, traffic and power supplies.	No significant adverse impacts on pastoral roads, public roads, traffic and other infrastructure	Compliant	As per GC 19 detailed in Table 10-6
GC20	The Licensee must, in constructing and operating the licence, ensure that there is no unauthorised damage to adjacent public or private infrastructure.	As above	Compliant	As per GC 19 detailed in Table 10-6
GC46	The Lessee must, in constructing, operating and post mine closure ensure there is no adverse impacts on flora and fauna due to the release or accumulation of radionuclides into the environment.	No adverse impacts on flora and fauna due to the release or accumulation of radionuclides into the environment.	Compliant	As for GC46 detailed in Table 10-4
GC64	The Lessee/Licensee must in constructing, operating the lease/licence and post mine closure ensure no introduction of new weeds, plant pathogens or pests (including feral animals), nor increase in abundance or distribution of existing weed or pest species in the lease/licence area and adjacent areas caused by mining operations. The Lessee/Licensee must ensure that all employees and contractors on-site are fully aware of the requirement to operate in a manner that will minimise the spread of weeds and plant pathogens. Weeds are defined in this condition as any invasive plant that threatens native vegetation in the local area or any species recognised as invasive in SA.	No introduction of new species of weeds, plant pathogens or pests (including feral animals), nor sustained increase in abundance of existing weed or pest species in the licence area compared to adjoining land as a result of mining operations.	Compliant	As for GC64 in Table 10-3 The general onsite induction informs any new personnel coming onto site of their environmental obligations including those relating to weeds.
GC65	The Lessee of Mining Lease 6228 must, in constructing, operating and post mine closure ensure there is no adverse impacts to Department of Defence operations within the Woomera Prohibited Area.	No adverse impacts to Department of Defence operations within the Woomera Prohibited Area (WPA).	Compliant	As for GC46 detailed in Table 10-5

PROMINENT HILL

Table 10-9 Summary of Grouped Lease Conditions with no Corresponding Environmental Outcome

Grouped Condition No.	Grouped Lease Condition	Comment	Status	Evidence	Forward works plan
GC05	The Lessee must ensure that all fuel and liquid chemical storage areas on Mining Lease ML 6228 are bunded and lined in accordance with current EPA (South Australia) guidelines.	This is a control strategy, not an outcome, and has been incorporated into the control measures for Impact 6 / lease condition GC06.	Compliant	OZ Minerals undertake site inspections which investigate the storage of liquid chemicals and fuels. Records of these inspections are maintained within the InControl risk management system database on the Prominent Hill server. No chemicals are stored onsite within natural surface water runoff zones.	Not applicable
GC09	The Lessee/Licensee must ensure that all employees and contractors on-site are properly advised of the significance of Aboriginal heritage and culture and are to take due care to preserve all Aboriginal Sites and Objects as defined by the <i>Aboriginal Heritage Act, 1988</i> .	This is a control strategy, not an outcome, and has been incorporated into the control measures for Impact 8 / lease condition GC08.	Compliant	The Cultural Heritage Management Plan Confidential (5.1.1PRO001) is in place.	Not applicable
GC10	The Licensee of Miscellaneous Purposes Licence (MPL) 91 must enter into a formal agreement with the Department of Transport, Energy and Infrastructure for construction, maintenance works and technical and operational issues regarding the Stuart Highway underpass. A copy of this formal agreement must be supplied to the Director of Mines and registered against the Miscellaneous Purposes Licence, prior to construction of the underpass	Deed of agreement with the Department of Transport, Energy and Infrastructure is in place. This deed is in place until 2023.	Compliant	Deed of agreement with the Department of Transport, Energy and Infrastructure (5.3.3AGR001) is in place This deed is in place until 2023	Not applicable
GC22	The Lessee must control erosion on the external slopes of the Integrated Waste Landform (IWL).	This is a control strategy, not an outcome, and has been incorporated into the control measures for Impact 15.1 / lease condition GC15.	Compliant	All of the Waste Rock Landform has not reached final height and as such has not yet been fully rock armoured. This criterion will be able to be assessed on completion of the operation. Current status: <ul style="list-style-type: none"> 81% of rock armour has been completed on the Northern Dump. 83% of rock armour has been completed on the Southern Dump. 67% of rock armour has been completed on the TSF. 	Not applicable
GC26	The Integrated Waste Landform (IWL) must be designed, constructed, operated and decommissioned in accordance with Tailings Management Guidelines as approved from time to time by the Chief Inspector of Mines in consultation with the Environment Protection Authority.	This is a control strategy, not an outcome, and has been incorporated into the control measures for Impact 15.4 / lease condition GC15.	Compliant	Tailings Storage Facility Annual Operational Audit 2016 (SMEC 2016) completed in February 2017 demonstrating the TSF Meets ANCOLD 1999 requirements. Next audit due late 2017/ early 2018.	Not applicable
GC27	The Licensee must in constructing and operating the Licence, ensure that there are no adverse impacts to adjacent land use.	This lease condition applies only to the Electricity Transmission Line (MPL 119-122). There is no identified impact in and no corresponding outcome in the original MARP. Impacts to adjacent land use are not a credible impact for an operating transmission line in this environment, and consequently an impact event and outcome have not been specified in this PEPR. The outcome is considered to be achieved unless there are specific unresolved complaints relating to land use adjacent to the Electricity Transmission Line.	Compliant	Compliant with all deeds and agreements. No complaints in this reporting period see Section 8.0	Not applicable
GC56	Significant Environmental Benefit (SEB) Vegetation Offset Area: The Lessee of Mining Lease 6228 must submit a detailed Significant Environmental Benefit Offset Area Management Plan (OZ Minerals 2016b) to the satisfaction of the Chief Inspector of Mines within 12 months from the grant of the lease. This must include an inventory of the flora and fauna within the offset site and a plan for the long-term future management and monitoring activities.	SEB Offset Area Stage 2 Management Plan (PH-ENV-REP-005) has been submitted and approved.	Compliant	See Section 13.0 of this report for SEB Offset Area compliance.	Not applicable



PROMINENT HILL

11.0 REVIOUS REPORTING YEAR NON COMPLIANCE AND SUBSEQUENT RECTIFICATION UPDATE

No non-compliance in the previous reporting period.

Table 11-1: Non-Compliances from Previous Reporting Period

Tenement	Date of Incident	Detected by Operator or DPC?	Reportable under Regulation 87?	Date Initially Reported to Minister	Date Written Report to Minister	Non-Compliance <i>Notes: Refer to outcome or lease condition breached</i>	Status	Further Work Plan	
								Actions	Implemented?
Not applicable	Not applicable	Not applicable	Not applicable	Not applicable	Not applicable	Not applicable	Not applicable	Not applicable	Not applicable

PROMINENT HILL

12.0 DISTURBANCE AND REHABILITATION ACTIVITIES

As outlined in the Significant Environmental Benefit Stage Two Offset Area Management Plan and PEPR 2017 the Prominent Hill Operation has a credit of 40 ha remaining with the Native Vegetation Council. This credit can be utilised for future land disturbance requirements. This credit is based on a total land cleared calculation of 2045 ha as detailed in the table below.

Table 12-1: Summary of Disturbance and Rehabilitation Activities in the Reporting Period

Activity	Tenement	Tenement Size (Ha)	Pre-mine disturbance (Ha)	Total cleared area (Ha)	Estimated clearance for next reporting period (Ha)	Forward Work Plan
Mine Lease	ML 6228	7,856.2	15.95	1,419.96	Nil	Not applicable
Access and Haul Road	MPL 83, 84, 96, 97	1,284.1	47.15	258.66	Nil	Not applicable
Virgo and Aries Borefield and Infrastructure Corridors	MPL 81 MPL 82 MPL 93–94 MPL 112–117	1,284.1	84.59	148.75	Nil	Not applicable
Extractive Mineral Leases	EML 6234 EML 6236–6242 EML 6278–6296 EML 6299–6301	57.8	0	66.53	Nil	Surrender of unused and remediated EMLs is currently underway. DPC visited the EMLs in 2015 and 2017. Information has been collected on further works required to some sites before surrender can occur. There has been delays to these work due to high rainfall in 2016 and early 2017.
Electricity Transmission Line	MPL 119–122	948.6	15.89	150.75	Nil	Not applicable
	TOTAL	11,401	163.58	2,044.65	Nil	Not applicable.

PROMINENT HILL

13.0 ENVIRONMENTAL PROTECTION AND BIODIVERSITY CONSERVATION ACT REPORTING

OZ Minerals submits the below information in accordance with the *Environmental Protection and Biodiversity Conservation Act 1999* (EPBC Act) approval conditions required for the Prominent Hill Copper-Gold Project South Australia (EPBC 2005/2040). In 2015, amended approval conditions were set upon OZ Minerals (EPBC reference 2005/2040). The annual compliance report demonstrates compliance/non-compliance with lease/licence objectives committed to in the agreement between Prominent Hill and the Minister for Environment. Historically, EPBC reporting has been submitted to the Department of the Environment under separate cover. Starting 2015 the Mining Act and EPBC Act reporting requirements have been presented within the same report. Information on flora and fauna discussed in Table 13-1 below has been sourced from Prominent Hill Flora and Fauna Monitoring Report Autumn 2016 (EBS 2016) and Prominent Hill Autumn Flora Survey 2017 (ELA 2017a)

Table 13-1: Summary EPBC Approval Conditions 2017

Condition number	Condition	Compliance status	Evidence
1	Amended 13 August 2015 (EPBC reference 2005/2040) The person taking the action must implement measures for the protection of endangered species listed under the Environment Protection and Biodiversity Conservation Act 1999, including the vulnerable Thick-billed Grasswren (<i>Amytornis modestus indulkanna</i>), the vulnerable Dusky Hopping Mouse (<i>Notomys fuscus</i>), the vulnerable Plains Rat (<i>Pseudomys australis</i>), the vulnerable Bronzeback Snake-lizard (<i>Ophidiocephalus teaniatus</i>), the endangered Salt Pipewort (<i>Eriocaulon carsonii</i>), the endangered <i>Frankenia plicata</i> and the endangered <i>Stemodia haegii</i> . These commitments are particularly intended to minimise significant adverse impact on the abundance and diversity of the endangered species, to avoid disturbance to vegetation and to prevent significant increase in weed density and distribution, or the introduction of new weeds.	Compliant	Methods implemented for the protection of habitat conditions and endangered species include: <ul style="list-style-type: none"> establishment and maintenance of the fence line around the SEB and ML to prevent stock impacts to important habitat ongoing habitat and vegetation monitoring, including sites specifically targeting known habitat for EPBC listed species, to demonstrate maintenance (or improvement) of habitat condition ongoing weed and pest monitoring to enable adaptive management if required and measures to reduce feral animal numbers including baiting and trapping.

PH-ENV-REP-0346
MINING LEASE 6228 & ASSOCIATED
TENNEMENTS COMPLIANCE REPORT 2017



PROMINENT HILL

Condition number	Condition	Compliance status	Evidence
			Thick-billed Grasswrens were observed during the Spring 2016 survey at lower abundance than previous years but the trends were consistent with seasons prior to 2011. No other EPBC listed species were observed during this survey. No unauthorised disturbance was observed to habitat critical for EPBC listed species. Stemodia haegii was removed from the EPBC Act endangered list on 27 November 2006.
2	The person taking the action must implement measures for the protection of ecological communities, listed under the EPBC Act, including the mound springs of the GAB. These commitments are particularly intended to minimise significant adverse impact by reduction in groundwater flows to the GAB springs due to project water extraction (well field development), or a reduction in the quantity and quality of water for existing users.	Compliant	<p>Water levels and water quality are collected from wells near the GAB mound springs to ensure that these ecological communities remain un-effected by the Prominent Hill operation. Data demonstrates that there has been no impact to the non-artesian Eromanga aquifer and the artesian Eromanga aquifer during the operation. The mound springs are sourced from the artesian Eromanga aquifer.</p> <p>Water levels and water quality are also collected from production wells accessed by existing users in the region. Where monitoring the production well is not possible a dedicated monitoring well has been installed. Whilst majority of the pastoral wells are screened within the non-artesian Eromanga aquifer, a few of the pastoral wells are installed within the deeper Boorthanna Formation. The Boorthanna Formation provides the water supply for the Prominent Hill operation. A reduction in the quantity of water available in three existing user wells has occurred, however OZ Minerals continues to work with the pastoral lease holder to ensure that this reduction does not affect their ability to economically run the lease.</p>

PH-ENV-REP-0346
MINING LEASE 6228 & ASSOCIATED
TENNEMENTS COMPLIANCE REPORT 2017



PROMINENT HILL

Condition number	Condition	Compliance status	Evidence
3	Within three years of the date of commencement of construction, the person taking the action must ensure that an independent audit of compliance with the conditions of approval of the action and the effectiveness of measures to mitigate the impacts on listed threatened species and communities. The independent auditor must be accredited by the Quality Society of Australasia or such other similar body as the Minister for the Environment and Heritage (Minister) may notify in writing. The audit criteria must be agreed by the Minister and the audit report must address the criteria to the satisfaction of the Minister. An audit report must be given to the Minister within six months of the completion of the audit.	Compliant	An independent audit was undertaken and the report delivered on the 8th June 2011. Net Balance Management Group Pty Ltd undertook the audit which was accepted by DoEE.
4	If, at any time after five years from the date of this approval, the Minister notifies the person taking the action in writing that the Minister is not satisfied that there has been substantial commencement of the Prominent Hill proposal, it must not thereafter be commenced.	Compliant	Project is operational
5	Amended 13 August 2015 – your reference 2005/2040) On 30 September each year after commencement of mine construction, and until the completion of mine decommissioning, the person taking the action is to provide written advice to the Minister demonstrating how the person taking the action has complied with the conditions of this approval. After this time no further report will be required.	Compliant	Every year OZ Minerals submits the Prominent Hill Annual Compliance Report. This report details OZ Minerals' Compliance Measures to meet the requirements as set out by the Minister.

PH-ENV-REP-0346
MINING LEASE 6228 & ASSOCIATED
TENNEMENTS COMPLIANCE REPORT 2017



PROMINENT HILL

Condition number	Condition	Compliance status	Evidence
6	(Amended 5th October 2012 (your reference 2010/18519). The person taking the action must undertake an independent audit of compliance with EPBC approval conditions three years for the due date of this variation, for submission to the department. Prior to commencement of the audit the department must approve the independent auditor and the audit criteria.	Compliant	An independent audit was completed by EY on the 10 and 11 August 2015. The outcomes of this audit were submitted to the Department on the 16 September 2015 and accepted.

PH-ENV-REP-0346
MINING LEASE 6228 & ASSOCIATED
TENNEMENTS COMPLIANCE REPORT 2017



PROMINENT HILL

14.0 AUDITS AND REVIEWS

Table 14-1 outlines the audits and reviews undertaken at Prominent Hill during the reporting period.

Table 14-1: Audits and Reviews in Reporting Period

Aspect Audited <i>Notes: What aspect of licence, PEPR or System was audited</i>	Date of Audit	Auditor	Issues raised <i>Notes: What issues, or recommendations for improvement were noted.</i>	Corrective Action <i>Notes: What corrective action that has or will be taken to address the issue.</i>
Tailings Storage Facility Annual Operational Audit 2016 (SMEC 2016)	February 2016	SMEC	Continue to maximise water return from the TSF. Small recommendations to optimise the next tailings lift.	Not applicable

PH-ENV-REP-0346
MINING LEASE 6228 & ASSOCIATED
TENNEMENTS COMPLIANCE REPORT 2017



PROMINENT HILL

15.0 VERIFICATION OF UNCERTAINTIES

Table 15-1: Summary of uncertainty verifications

Description of Assumption or Uncertainty <i>Notes: e.g. Groundwater model (refer to mining proposal or PEPR)</i>	Estimated Date to Resolve <i>Notes: Estimated date that sufficient data has been acquired to confirm assumption/ model with high level of confidence</i>	Progress in reporting period <i>Notes: Summarise data acquired, and if this data is consistent with assumption or model</i>	Confirmed? <i>Notes: Y/ N i.e. has sufficient data been acquired to provide high level of confidence in assumption)</i>	Forward Work Plan
TSF capping strategy final design.	2018	TSF Dusting study completed by Jacobs (Jacobs 2017). Analysis of groundwater data for TSF Monitoring wells by Ecological Australia. (ELA 2017b).	No	Continue preparation of Final Closure Management Plan and supporting technical studies. See Section 18.0 Forward Works Plan, Number 2.
Closure completion criteria update.	2018	Operational environmental outcome measurement criteria updated as part of PEPR 2017.	No	See Section 18.0 Forward Works Plan, Number 3.
WRD closure.	2018	Draft completion criteria for the Northern Waste Rock Dump complete.	No	Continue preparation of Final Closure Management Plan and supporting technical studies. See Section 18.0 Forward Works Plan, Number 4.
Final rehabilitation of disturbed areas (including roads, infrastructure pads, borefields etc).	2022	Project plan completed	No	Engage stakeholders including pastoralists, indigenous groups, research and consultants. For data review and revegetation trial set up. See Section 18.0 Forward Works Plan, Number 1.

PH-ENV-REP-0346
MINING LEASE 6228 & ASSOCIATED
TENEMENTS COMPLIANCE REPORT 2017



PROMINENT HILL

16.0 TECHNICAL REPORTS

All technical and expert reports referenced throughout this document and listed below can be provided and reviewed if request by DPC.

Table 16-1: Technical Reports

Report	Author
PH-ENV-REP-0205 Prominent Hill Program for Environment Protection and Rehabilitation 2017	OZ Minerals
PH-ENV-REP-0345 2017 Prominent Hill Compliance Report 2017 Water Licence 41028	OZ Minerals
PH-ENV-REP-0344 2017 Prominent Hill Compliance Report 2017 Water Licence 183346	OZ Minerals
PH-ENV-REP-0286 Prominent Hill Compliance Report 2016	OZ Minerals
Prominent Hill Autumn Flora Survey 2017	Eco Logical Australia
PH-ENV-REP-0282 Prominent Hill Flora and Fauna Monitoring Report Spring 2016	EBS
ENV-REP-500 Significant Environmental Benefit Offset Area Management Plan 2016	OZ Minerals
PH-EN-RPT-0335 Annual Radiation Protection Report	OZ Minerals
Tailings Storage Facility Annual Operational Audit 2016	SMEC
Prominent Hill TSF Water Quality Assessment	Eco Logical Australia
PH-EN-PLN-002 Radiation Management Plan	OZ Minerals
5.1.1PRO001 Cultural Heritage Management Plan (Confidential)	OZ Minerals
TSF Dustability Study	Jacobs Group Australia

PH-ENV-REP-0346
MINING LEASE 6228 & ASSOCIATED
TENNEMENTS COMPLIANCE REPORT 2017



PROMINENT HILL

17.0 ACTIONS FROM PREVIOUS REPORTING PERIOD

The status of actions identified in the 2016 Compliance Report (OZ Minerals 2016a) is provided in this section. Where the 2016 actions remain ongoing, reference to them is also made within Section 18.0.

Table 17-1: Summary of Previous Reporting Period Actions

Action No.	Action Description	Status	Status at End of Reporting Period
1	Review flora and fauna survey methods	Yes	This has been completed in consultation with DPC and included in the PEPR 2017 update which this report complies to.
2	Surrender unused EMLs to the agreed completion criteria	No	A scope of works has been generated and discussed with a contractor. Delays have occurred due to unusually high rainfall during 2016 and early 2017.
3	Groundwater Monitoring Plan	Yes	Completed February 2016.
4	SEB Management Plan	Yes	Completed with official endorsement received from the Native Vegetation Council December 2016.
5	Rehabilitation methodology	Ongoing	See Section 18.0 Forward Works Plan, Number 1
6	Develop completion criteria for the Tailings Dam in accordance with requirements of DPC and SA EPA	Ongoing	Tailings dustability study has been completed (Jacobs 2017) to assist in informing as to methods of Tailings Dam completion. This has been pushed out to Q2 2018. See Section 18.0 Forward Works Plan, Number 2

PH-ENV-REP-0346
MINING LEASE 6228 & ASSOCIATED
TENNEMENTS COMPLIANCE REPORT 2017



PROMINENT HILL

18.0 FORWARD WORKS PLAN

Table 18-1 summarises the actions raised throughout this compliance report. These actions will form the basis of the forward works plan for OZ Minerals Prominent Hill Operation during the 2017-2018 year.

Table 18-1: Forward Works Plan Summary

Action No.	Action	Action Description	Proposed Completion Date	Compliance Report Reference
1	Rehabilitation methodology	Final rehabilitation of disturbed areas (including roads, infrastructure pads, borefields etc.)	2022	Section 16.0
2	TSF capping strategy	Develop a capping strategy for the TSF post closure	2018	Section 15.0
3	Closure completion criteria update	Develop operation environmental outcome measurement criteria updated as part of PEPR 2017	2018	Section 15.0
4	WRD closure	Determine completion criteria for the Northern and Southern WRD's.	2018	Section 15.0
5	Electricity Transmission Line cultural heritage	Conduct cultural heritage inspection of the Electricity Transmission Line during Q1 of next reporting period, in addition to the 2017/18 inspection requirement	H2 2017	Section 10 Table 10.7
6	Cultural awareness	Further cultural heritage awareness and training program to be developed	H2 2017	Section 10 Table 10.7

PH-ENV-REP-0346
MINING LEASE 6228 & ASSOCIATED
TENEMENTS COMPLIANCE REPORT 2017



PROMINENT HILL

19.0 MINISTERIAL DETERMINATION CHECKLIST

Item	Location
Executive summary	Page 5
1. Introduction	Page 11
Tenement number(s)	Section 3.0
Name of the mine operation	Section 1.0
General location details	Section 1.0
Name(s) of the mine owner and mine operator(s)	Section 1.0
Site Contact	Section 1.0
Registered Mine Manager, Mines Works Inspection Act, 1920	Section 1.0
Reference and approved date of relevant PEPR being reported against	Section 1.0
Person accepting responsibility for the report	Section 1.0
Dates of the reporting period for the report	Section 1.0
Date of preparation of the report.	Section 1.0
2. Executive Declaration	Page 13
3. Tenements	Page 14
Summary table of all tenements including ML, MPL, EML etc.	Section 3.0
4. Other Licences, Permits, Waivers, Native Title and Agreements	Page 17
Summary table of all licences, permits, waivers, native title and other agreements relevant to the PEPR.	Section 4.0
Where applicable, provide a statement that all waivers for exempt land required for the current operation are in place in accordance with the Mining Act	Section 4.0
5. Mining operations	Page 19
Ore reserves and mine life	Section 5.1 and 5.2
new delineation or exploration drilling activities on or off the lease (if required)	NA
review of reserves (if required)	Section 5.0
Other potential sources of ore (e.g. from nearby mines) (if required)	NA
Overburden, Ore and Concentrate	Page 24
Overburden	Section 5.4
Ore	Section 5.3
Concentrate	Section 5.6
Voluntary information (not mandatory, but strongly recommended)	Section 6.0
6. Project Variation Summary	Page 28
Summary table of any changes/project variations submitted to DPC	Section 7.0

PH-ENV-REP-0346
MINING LEASE 6228 & ASSOCIATED
TENEMENTS COMPLIANCE REPORT 2017



PROMINENT HILL

Item	Location
Complaints	Page 29
Summary table of complaints made by members of the public during the reporting period	Section 8.0
Indicate how concerns or complaints by third parties were addressed.	Section 8.0
7. Compliance Summary	Page 30
Summary table of non-compliances (if relevant)	Section 9.0
8. Compliance Tables	Page 31
For each outcome in PEPR state if "complied", "not complied", or "unable to demonstrate compliance"	Section 10.0
For each outcome in the PEPR provide summary criteria data that supports the conclusion above	Section 10.0
For each lease or licence condition (other than environmental outcomes) state if "complied", "not complied", or "unable to demonstrate compliance"	Section 10.0
For each leading indicator criterion state if any were triggered in the reporting period	Section 10.0
If triggered, (if required)	Section 10.0
<ul style="list-style-type: none"> What actions were taken 	Section 10.0
<ul style="list-style-type: none"> An assessment of the effectiveness of the current control strategies or criteria 	Section 10.0
Closure	Section 12.0
Where native vegetation has been cleared in the reporting period, the following must be included: (if required)	Section 12.0
<ul style="list-style-type: none"> a reconciliation between the approved maximum clearance in hectares, 	Section 12.0
<ul style="list-style-type: none"> the amount cleared in the reporting period, 	Section 12.0
<ul style="list-style-type: none"> the total amount cleared to date, 	Section 12.0
<ul style="list-style-type: none"> an estimated amount to be cleared in the next reporting period. 	Section 12.0
9. Non-Outcome Based Lease Conditions	Page 47
If you have any lease conditions which do not have an outcome measurement criteria relating to it please list the compliance status and evidence against each condition in a summary table	Section 10.0
10. Rectification of Non-Compliances	Page 48
If a "not complied" is recorded, the following must be included: (if required)	Section 11.0
<ul style="list-style-type: none"> date of the incident 	Section 11.0
<ul style="list-style-type: none"> state if the incident was a Reportable Incident under Regulation 87. If so the report must also state the date the incident was initially reported to the Minister and the date the written report was provided to the Minister. 	Section 11.0
<ul style="list-style-type: none"> what environmental outcome or lease condition was breached 	Section 11.0
<ul style="list-style-type: none"> if and how the noncompliance was, or is planned to be, rectified 	Section 11.0
<ul style="list-style-type: none"> what measures, if any, will be taken to prevent recurrence. 	Section 11.0

PH-ENV-REP-0346
MINING LEASE 6228 & ASSOCIATED
TENEMENTS COMPLIANCE REPORT 2017



PROMINENT HILL

Item	Location
Progress update on previous non-compliances not fully rectified at time of last report	Section 11.0
11. Disturbance and Rehabilitation Activities	Page 49
Information on areas disturbed and current rehabilitation status	Section 12.0
The amount of land disturbed	Section 12.0
Vegetation cleared	Section 12.0
New measures implemented to avoid or control environmental impact	NA
Revegetation or rehabilitation earthworks conducted.	NA
Evidence (by using closure and rehabilitation criteria in the current approved PEPR) of the effectiveness of rehabilitation being progressively undertaken.	NA
Any problems or potential improvements learned from previous rehabilitation	NA
An assessment of risks that rehabilitation may or may not be achieved as planned	NA
New strategies to be undertaken to achieve rehabilitation outcomes (if required)	NA
12. Environment Protection and Biodiversity Conservation Act reporting	Page 50
Demonstration of compliance with EPBC conditions (if required)	Section 13.0
13. Audits and Reviews	Page 54
If an audit or review of any part of the operation management system was conducted during the reporting period, the following information on the audit or review must be included: (if required)	Section 14.0
<ul style="list-style-type: none"> when the audit or review was undertaken 	Section 14.0
<ul style="list-style-type: none"> who undertook the audit or review 	Section 14.0
<ul style="list-style-type: none"> what aspect(s) of the management system was/were audited/reviewed 	Section 14.0
<ul style="list-style-type: none"> what issues, or recommendations for improvement, were noted 	Section 14.0
<ul style="list-style-type: none"> an assessment of the potential for any issues identified in the audit/ review to lead to a noncompliance with approved environmental outcomes 	Section 14.0
<ul style="list-style-type: none"> what corrective action that has or will be taken to address any issues. 	Section 14.0
14. Verification of Uncertainties	Page 55
Changes or failures of mining operations	Section 15.0
Increases to areas disturbed	NA
New baseline environmental data	NA
Reported to DPC?	Section 15.0
Uncertainties table	Section 15.0
15. Technical Reports	Page 56
Summary of technical data studies and reports generated in reporting period	Section 16.0
16. Forward Work Plan	Page 58

PH-ENV-REP-0346
MINING LEASE 6228 & ASSOCIATED
TENNEMENTS COMPLIANCE REPORT 2017



PROMINENT HILL

Item	Location
Action description	Section 18.0
Responsibility	Section 18.0
Proposed Completion Date	Section 18.0
17. Ministerial Determination Checklist	Page 59
This checklist	Section 19.0

PROMINENT HILL

20.0 REFERENCES

EBS (2016) PH-ENV-REP-0282 Prominent Hill Flora and Fauna Monitoring Report Spring 2016, Report prepared for OZ Minerals by EBS Ecology Pty Ltd

ELA (2017a) Prominent Hill Autumn Flora Survey 2017, Report Prepared for OZ Minerals by Ecological Australia Pty Ltd.

ELA (2017b) Prominent Hill TSF Water Quality Assessment, Report Prepared for OZ Minerals by Ecological Australia Pty Ltd.

OZ Minerals (2017a) PH-ENV-REP-0345 2017 Prominent Hill Compliance Report 2017 Water Licence 41028

OZ Minerals (2017b) PH-ENV-REP-0344 2017 Prominent Hill Compliance Report 2017 Water Licence 183346

OZ Minerals (2016a) PH-ENV-REP-0286 Prominent Hill Compliance Report 2016

OZ Minerals (2016b) PH-ENV-REP-500 Significant Environmental Benefit Offset Area Management Plan 2016

OZ Minerals (2017a) PH-EN-RPT-0335 Annual Radiation Protection Report

OZ Minerals (2017b) PH-EN-PLN-002 Radiation Management Plan

OZ Minerals (2017c) PH-ENV-REP-0205 Prominent Hill Program for Environment Protection and Rehabilitation

Jacobs (2017) TSF Dustability Study, Prepared for OZ Minerals by Jacobs Group Australia Pty Ltd.

SMEC (2016), Tailings Storage Facility Annual Operational Audit 2016, Report Prepared for OZ Minerals by SMEC Pty Ltd.

