

The City of Mitcham

QUARRIES

1999

CONTENTS

Introduction	
General History	
Geological	
 Quarry Profiles	
Brownhill Creek	
- Rogers.....	Q1
- Brownhill Creek	Q2
 Mitcham	
- Anderson 1	AQ1
- Anderson 2	AQ2
- Anderson 3	AQ3
- Sugar Loaf (XL).....	
- McElligott 1.....	McQ1
- McElligott 2.....	McQ2
- McElligott 3.....	McQ3
- Fuller's.....	
- Scott's	
 Randell Park	
- Local Government.....	
- Hayward (XL)	RPQ1
- XL	RPQ2
- Beddell (XL)	RPQ3
- Sugarloaf Hill (XL).....	RPQ4
- Rockness.....	RPQ5
 Lynton	
- Schwerkolt	LQ1
- Wilke.....	LQ2
- SA Railways	LQ3
 Sleeps Hill	
-Quarry A	QA
- Quarry C and B	QC- B
- Quarry D	QD
- Quarry E	QE
- Quarry G	QG
- Quarry H.....	QH
- Quarry J	QJ
- Quarry H.....	QH
- Quarry K.....	QK
- Quarry L1	QL1
- Quarry L2	QL2

O'Dea's

Willunga Street

Sheoak Road.....

Council Minute Extracts

Some Quarrymen

Bibliography & Acknowledgements

MITCHAM QUARRIES EXECUTIVE SUMMARY.

On 25 June, 1998 following the matter of safety in Mitcham quarries being raised in Council, a working party as formed to address the safety issue of all quarries on Council land.

The working party comprised: Councillor Bob Marshall, Mr David Wuttke from Local Government Mutual Liability Scheme , Mr Greg Drew from the Department of Mines, Mr Roger Grund a representative of MOSAC, Mr M Bell Council Risk Officer, Ms M Ragless Council Local Historian and Mr David Deer, Horticultural Consultant.

During the last 18 months we also had assistance from two students, Mark Edwards and John Spurling who co-authored the Natural Heritage Ecotourism Report - January 1999.

Other reports from Mr Royce Wells 1995, Gupta Report 1996 and the information on the Sleeps Hills quarries as published by the Department of Mines were also valuable resource material.

This investigation has been a long and involved program and has included a great deal of research from Maggie Ragless who has spent many hours chasing up past owners of quarries and linking the relevant facts and to the assessment team who have spent many hours visiting and climbing over the sites in order to record the condition of the quarry faces, and surrounds.

The final report includes information on the location of each quarry, a brief history, relevant photo of the site and an assessment of the sites, including relevant fencing signage, height of walls, stability, gradients, proximity to houses, accessibility, current use, future use, geological significance, vegetation and fire risk.

The main purpose of the exercise was to focus on the safety of the quarries and this has been, and is, the priority of this report.

We have been able to use the information gathered to prioritise the Quarries as to the severity of risk on each site as follows:

Lynton Quarry 1

This area was of concern due to no signage, no fencing, trails are visible over most of the area and on the higher slopes that lead into quarry face with no fencing and or signage, the height of the fall, the stability of area at the top of the quarry area are also of concern.

Weemalla Quarry 2

Close proximity to private land (house adjacent to quarry face) no fencing or signage with loose material at the top of quarry area with some falls visible.

Randall Park Quarry 1

The top of this quarry is of the walking trail on Burnell drive and again evidence of walking trails to quarry face , close proximity to housing, no signage and no fencing .

O Dea Quarry on Pym street Belair

Quarry abuts a grey box woodland area of Council Reserve . the fall heights are extreme with no fencing, no signage and several trails including bike trails within metres of quarry face.

Lynton Quarry 2 (area G)

There was concern over this quarry in regards to unprotected water area in base of quarry , trails above quarry very near to edge with a unstable quarry edge evident, no signs or fencing on the upper slopes

Lynton Quarry 3

Quarry walls greater than 20 metres in height with no signage and or fencing, tops of quarries appear to be sloping downwards and covered with loose material and sheer drops and there are walking trails in the area.

Randall Park Quarry 4

This quarry is almost adjacent to Old Belair road with a rive way approach to quarry face, Fall height of 10 metre plus no signage no fencing and obvious community access

Randell park Quarry 2

This quarry area is also adjacent to Burnell Drive area and private housing , no signs, no fencing with high fall heights.

Sleeps Hill Quarry g

As part of the Sleeps Hill quarry walking trail area there are trails all over the area. Some fencing is in place that needs repair and other area fencing needs to be extended.. Signage is also required.

McElligotts Quarry 1

The main Quarry at McElligotts has been fenced and trails established around the front or car park quarry. There is a second quarry to the south east only meters away that is not fenced or signed

Sleeps Hill Quarries I , L1, J, D, C-B

All of the above quarries are included in the Sleeps Hill walking trail Guide, fences are present but are in need of repairs and extensions where trails have by passed fenced area. Signage is also important. Quarry area C B also very steep trail requires hand rails to be installed for safety

Randall Park quarry 3

As other Randall park quarries the top section is close to existing walking trails no fencing no signage

Randall park Quarry 5 Rockness

This quarry is isolated from other quarries in Randall Park but there are still issue in regards to close proximity to housing, no signage no fencing and walking trails in close proximity.

There is also an obvious slip on tis reserve that has happened in recent times.

Brownhill Creek Quarry 2

One of two reserves that are on Council land in Brownhill creek area. These areas were used as rubbish dumps many years ago with the top faces of the quarries matching into private land. In recent times there are unofficial mountain bike tracks in close proximity to the upper areas of the quarry faces
No fencing and no signage are a concern

Weemalla Drive quarry 1 and 3

Close to private property with no signs and poor fencing in place , Fall heights are not great but there is a risk

Scotts Quarry

Blythwood Road opposite the Mitcham cemetery. Small quarry fall height no greater than 5 metres. Next to a main road with no fencing and no signage .

Sleeps Hill Quarries A, E, K, L2, and H

Areas that were fenced when walking trail developed approx 8 years ago there were no signs erected at this time. The trails are well used with many fences in need of repair and extension along with appropriate signage.

Brownies Quarry

The second Quarry in Brownhill Creek Road used as a rubbish dump close to private property signage and some minor fencing required.

Mcelligotts Quarry 2 and 3

Quarry 2 is the south east of existing car park quarry requires fence repairs and signage on the Brownhill reserve boundary to this quarry

Quarry 3 is the area adjacent to the unmade Blythwood Road. If walking trail in this area is to proceed there are a couple of areas where there are some fall height greater than 2 metres that will need to be fenced.

It s proposed to use an international set of signs indicating Quarries . high quarry faces and unstable conditions on all of the above sites.

The fences will be constructed based on a design supplied by the Department of Mines using a supportive fence structure in areas where there are lookouts.

Access to some reserves will also be fenced or barricaded to minimise vehicle access and ensure some safety.

It is proposed that the work on these quarries will be phased over the next 3 to 5 years operating within a set budget and starting on the high priorities as identified in this report.

The report also suggest that some quarry faces could be used as recreational areas for rock climbing and abseiling and that Council recreation officer looks at the potential to develop these sites.

Eco tourism potential in these areas to be pursued as part of Mitcham Councils Tourism plan.

Mountain Bike riding is a concern in many areas particularly impacting on native vegetation and as a concern to riders in close proximity to quarry faces. There is a Working Group currently meeting to discuss Mountain Bike Riding on Public Land in the Mt Lofty Ranges and these sites will be included on a inventory of bike riding areas that require some action.

A special Thank you to those involved in the study and preparation of this report.

Mitcham Quarries Severity Rating

Lynton Depot Q1	31
Weemalla Q2	27
Randell Park Q1	27
O'Dea Quarry - Pym St. Belair	27
Lynton Q2 Area(G) Wilkes Q	26
Lynton Depot Q3	25
Randell Park Q4	25
Randell Park Q2	25
Sleeps Hill Q G	24
McElligots Q1	24
Sleeps Hill Q L1	23
Sleeps Hill Q J	23
Sleeps Hill Q D	23
Sleeps Hill Q C-B	23
Randell Park Q3	23
Randell Park -Rockness Q5	23
Brownhill Creek Q2	22
Weemalla Q1	22
Weemalla Q3	22
Scotts Creek - Blythwood Rd	22
Sleeps Hill Q A	22
Sleeps Hill Q E	22
Sleeps Hill Q K	22
Sleeps Hill Q L2	22
Sleeps Hill Q H	21
Brownies Reserve Q1	21
McElligots Q3	20

INTRODUCTION

MITCHAM COUNCIL has every justifiable reason to be very proud of its rich heritage in QUARRYING HISTORY. No other council area in SA has had so many individual quarries that have supplied high quality stone for public buildings and housing throughout the Adelaide City, Adelaide Plains and Adelaide Hills areas. The Tea Tree Gully Council area ranks second with the Stirling Council area ranking third. Mitcham, however, has more historic building stone quarries than the total sum of these two areas put together.

As the demand for building stone for houses and buildings declined in favour of bricks, many of the major quarries turned to producing stone aggregate for railway lines and road construction. As a result, thousands of miles of railway tracks are bedded onto quartzite aggregate from the Mitcham quarries as well as hundred of miles of local roads that are constructed from Mitcham stone.

Today, the now silent quarries, most of which are on reserves, form very important windows into our geological past. The quarries have become popular for study by secondary school students and university geological groups and are of great interest to local history and building history students.

MITCHAM should be very proud of what it has to offer in the magnificent quarries still available for the public to wander amongst. (Royce Wells 1995)

This report covers all the quarries owned by the City of Mitcham however, there are almost as many again which have become privately owned in recent years. There are also a number of quarries that council have used as rubbish dumps which now provide extra reserve space which have not be included in this study.

GENERAL HISTORY

Quarrying in the Mitcham area commenced in the early years of the colony and was firmly established by the 1850s. It continued non-stop until the late 1950s, with the last few operations being wound down until a total cessation occurred in the mid 1960s. (Royce Wells 1995).

1894 November 6 – Mitcham Council Minutes

Returns were produced showing 69,300 tons of stone at 21 cwt to the cubic yard had been taken out of Quarries in the district during the last 12 months.

Blythman	4000 cubic yards
Dynon	5300 cubic yards
Murphey	3000 cubic yards
Chalk	3600 cubic yards
Young	4500 cubic yards
Dunn	1500 cubic yards
Mattingley	6000 cubic yards
Fuller	18000 cubic yards
Moriarty	2500 cubic yards
Tremrelling & Trenouth	12000 cubic yards
Moyse, Temme & Others	5600 cubic yards

All of the quarries in the Mitcham Council area originally supplied stone for houses, churches, public buildings and stone walls throughout the Mitcham, Adelaide Plains and Adelaide Hills areas. Some produced magnificent stone for street kerbing and street guttering over a wide area. Many of our finest mansions can be identified with the particular quarries that supplied the stone they were built from. A large number of stone buildings in Adelaide were built of stone from the Mitcham Quarries and although a lot of these have been demolished, there are still a considerable number that still remain.

The principle stone produced from most of the Mitcham quarries was sandstone, known to builders as "freestone". Dolomite known to builders as "bluestone" was produced in

considerable quantities for building houses and buildings and was particularly in demand for foundations and street kerbing. Slate was produced for building purposes such as roof shingles, hearths and doorsteps. Some of the very best slate often came from small quarry faces. (At Anderson's Quarry, a number of small shallow pits, some of which are on Council land, produced slate to a quality that was a close second to that of the slate produced from the world famous Willunga Group of quarries.)

Shale was also in demand for the building of cheaper houses, for walls, pavements and for the brick making industry. Shale increased in value as the years progressed and there were many important shale quarry faces amongst the Mitcham group. In later years the beds of hard quartzite, resting for the most part below the sandstone and shale beds, were crushed to produce gravel (in particular "aggregate") for railway and road construction.

Some quarries eg Andersons Schwerkolts, produced five products:- sandstone, dolomite, shale, slate and quartzite and like most other major operators, crushed lower grade material to produce gravel and sand which was always in demand throughout the local building industry. (Royce Wells 1995)

In 1950 Quarry Industries consisted of the following subsidiary companies.

Adelaide Quarries Ltd

Andersons' Quarries Co Ltd

Excavators Ltd

Glen Osmond Quarries Ltd

Linwood Quarries Ltd

Quarries Ltd

Quarry Transport Ltd

Rockdale Quarries Ltd

Stoneyfell Quarries Ltd

Sand & Gravel Ltd

Torrens Valley Ltd'

Tea Tree Gully Quarries.

GEOLOGICAL

The quarries all supply a big part of the wealth of history and social history of Mitcham and beyond. On an even wider perspective they represent WINDOWS INTO GEOLOGICAL TIME where one can look through cross sections of hundreds of millions of years in South Australia's geological history. Each quarry face contains important and unique geological features. It is extremely important that these magnificent features are retained for all future generations to see in a setting of rich beauty and rejuvenated countryside.

The Adelaide Quarries complex near Sleep's Hill, is the subject of a geological booklet published by the Department of Mines and Energy. The booklet brings to life the geological significance of each of the many, totally unique quarry faces. The quarries are now incorporated into a series of beautiful and interesting walking trails within the Mitcham area.

The Sugar Loaf Hill group of interconnecting quarries between the original and the present 'Old Belair' Roads, contain important historical links to local mansions. Significant geological features are present especially on the high eastern face close to the present main road. XL Quarries on the other side of the gully have very different geological formations and form an excellent basis for another walking tour publication (especially with the ruins visible outside of the geological features).

BROWNHILL CREEK QUARRIES

ROGERS QUARRY (Reserve C1, adjoining 1093)



Opened in the 1860s, W Rogers worked this important large freestone quarry from 1884 to the early 1900s and several lesser operations for a short period after this. The quarry was an important building stone deposit supplying stone for many houses in Mitcham and nearby suburban areas.

ROGERS QUARRY - BROWNIES RESERVE Q1

			Comments	Actions
Fencing and Signage				
Is quarry area fenced?	Yes	✓		
Is fence in good repair?	Yes	✓		
Is fence appropriate?	Yes	✓		
Is quarry signed?	Yes	✓		Quarry to be signed as soon as possible
Is signage appropriate?	Yes	✓		
Description of Quarry Quarry on the Brownhill Creek road past creek on the eastern slope. Some of the quarry wall is on private property. The quarry was used as a rubbish dump for many years Opened as a quarry in 1860 1845 to 1890- building stone for many Adelaide buildings Area heavily infested with weeds and exotic vegetation				
Quarry Height 1. < 2.5m 2. 2.5m to 10m 3. 10m to 20m 4. > 20m	Rating 4			
Stability - Top 1. No loose material/Stable 2. Some loose material 3. Loose material 4. Loose material/Unstable	Rating 1			
Stability - Bottom 1. No loose material/Stable 2. Some loose material 3. Loose material 4. Loose material/Unstable	Rating	Unable to assess the floor of the quarry wall as access is not possible due to dense weed growth.		
Gradient 1. Gentle gradient/Walkable 2. Slightly steeper/Un-walkable 3. Sheer 4. Overhanging	Rating 3	Trails were cut for access by vehicles when dumping took place these have overgrown and become rutted not drive able.		
Proximity to houses 1. Isolated 2. Aware of housing 3. Visible 4. Abutting	Rating 1			
Public Accessibility 1. Isolated no access 2. Accessible with difficulty 3. Accessible walking trails 4. Readily accessible defined roads/tracks	Rating 2	B M X track on the southern slope mainly on private property. Track comes down hill from the corner of James road and Old Belair Road. Mountain bike riders.		

ROGERS QUARRY - BROWNIES RESERVE Q1

Current Use 1. No sign of use 2. Minor use 3. Occasional use 4. Frequently used regular trails	Rating 1		
		Comments	
Emergency Access (Recovery) 1. Defined Road 2. Vehicle access 3. Defined walking trail 4. Trail steep, care required 5. No trail	Rating 4		
		Steep trail care required	
Historic significance 1. None 2. Minimal value 3. Significant 4. Highly significant	Rating 3		
			Early houses built from stone from these quarries
Geological significance 1. None 2. Minor 3. Interesting feature 4. Significant feature	Rating 3		
			If the area was cleared up and made more visible there would be some significant features
Vegetation 1. Total exotic 2. Some native vegetation 3. Interesting feature 4. Good native vegetation	Rating 2		
			Some native Eucalypts competing with the strong exotic weeds in the area
Fire Risk 1. No risk 2. Slight fire risk 3. Accessible in case of fire 4. Fire trap	Rating 4		
		Minimal access high fuel loading make area a fire trap and potential hazard	
Visitation public access 1. None 2. Limited access 3. Moderate access 4. Good access	Rating 2		
Visitor 1. None 2. Minor 3. Potential 4. Good potential	Rating 1		
Potential Recreational Use 1. None 2. Slight 3. Moderate 4. Good	Rating 2		
			Walking trails an opportunity to link Brownhill creek with Randall Park reserve
Comments (Rubbish, erosion, etc)			
Area heavily infested with weeds			

BROWNHILL CREEK QUARRY (Reserve C adjoining 1093)

Opened about 1870 and worked on a large scale till about 1910, the quarry supplied stone for many of the older buildings in Mitcham and Adelaide. The quarry was noted for its high-grade freestone and was worked in succession by W. Rogers, JW King, SM Moyse and JR Priest.



1895 February 5 - The Council Clerk reported Crown Land Office had vested the Quarry in this council vide SA Govt. Gazette 24 Jan. 1895 pgs 131-2. Tenders have been called for lease. It was decided to allow 1000 cy to be removed per annum. Seven offers were made ranging from £45.12 0 to £101. The highest, that of S & J Trenoweth, was accepted.

1895 May 7 - Cr Anderson stated he had received information that Messrs S & J Trenoweth were allowing a large amount of waste to accumulate in their quarry. Clerk stated he had visited the quarry and found it so. He wrote to Messrs Trenoweth and Mr Trenoweth explained that as things were very busy in the quarry just now the rubbish would be cleared when things were not so busy.

1895 August 6 - Clerk reported Trenoweth had not done anything towards cleaning quarry. He wrote stating he had received instructions to do so but could not owing to continued wet weather he also promised to see to it at once.

1895 Sept. 3 - Surveyor reported Messrs S & J Trenoweth had not removed the refuse from the Brown Hill Creek Quarry. Proposed by the Chairman that councillors interview Mr Trenoweth and inspect the quarry on 1st October.

Councillors visited the Brown Hill Creek Quarry, Trenoweth's and found that the Quarry was not as bad as had been represented. (Mitcham Council Minutes)

The upper portion of 45 Currie Street, Adelaide, part of St Michaels Church, Mitcham and the Mitcham Village Institute are reputedly built from stone from this quarry. (Record of Mines Summary Card)

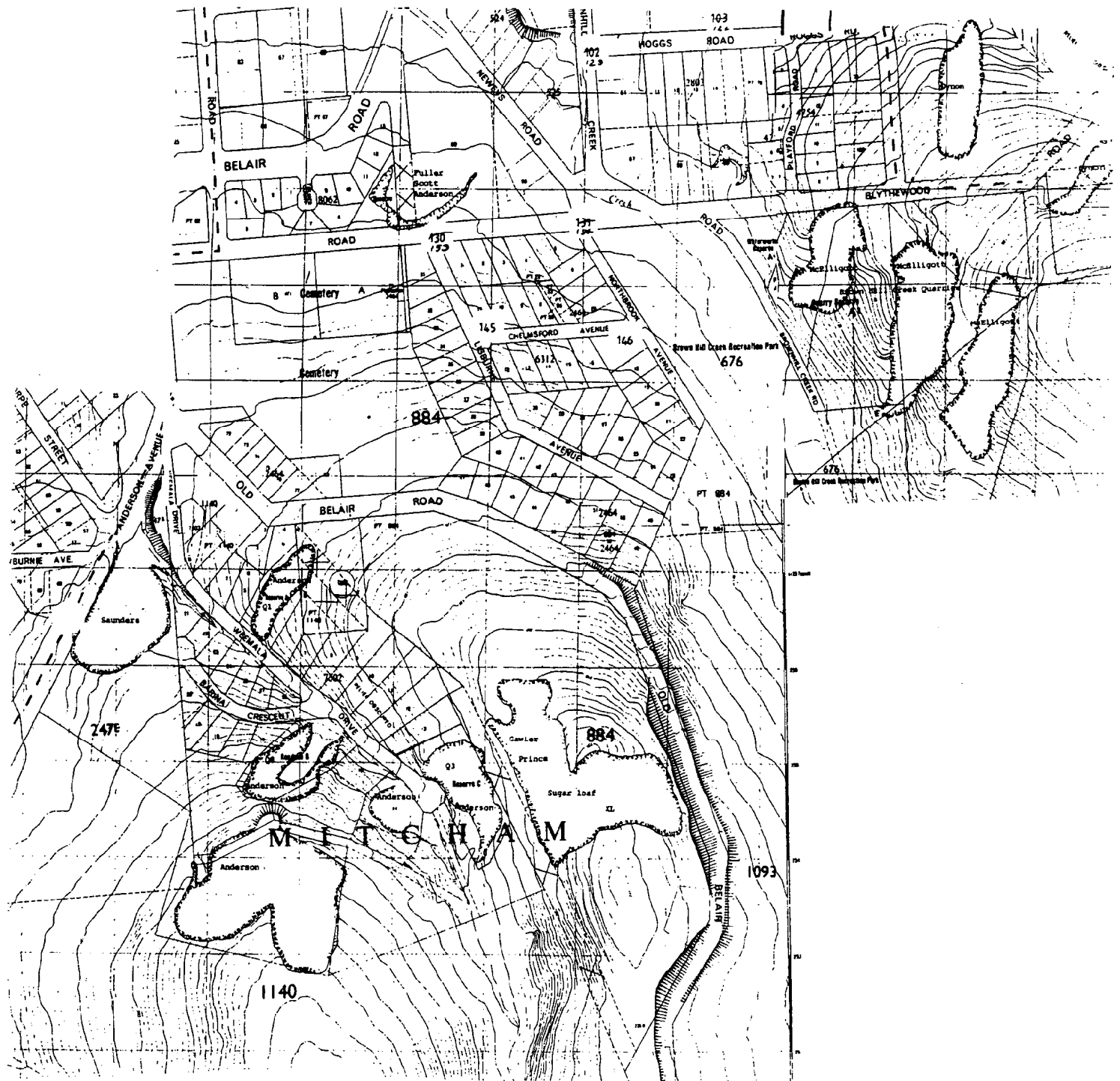
The Brownhill Creek Quarry on Reserve C, was the first filled in, during the 1930s. Fortunately, the upper face of this quarry remains so some of the sandstone bed can still be seen. This had been a very important building stone quarry. (Royce Wells 1995).

BROWNHILL CREEK QUARRY				
			Comments	Actions
Fencing and Signage				
Is quarry area fenced?	Yes	✓		
Is fence in good repair?	Yes	✓		
Is fence appropriate?	Yes	✓		
Is quarry signed?	Yes	✓		Quarry to be signed as soon as possible
Is signage appropriate?	Yes	✓		
Description of Quarry				
Brownhill creek Road next to Rogers Quarry Used as a rubbish dump by Mitcham council for many years				
Quarry Height 1. < 2.5m 2. 2.5m to 10m 3. 10m to 20m 4. > 20m	Rating			
	3	Quarry face visible where not filled graffiti on walls		
Stability - Top 1. No loose material/Stable 2. Some loose material 3. Loose material 4. Loose material/Unstable	Rating 1			
Stability - Bottom 1. No loose material/Stable 2. Some loose material 3. Loose material 4. Loose material/Unstable	Rating 1			
Gradient 1. Gentle gradient/Walkable 2. Slightly steeper/Un-walkable 3. Sheer 4. Overhanging	Rating 3	Wall rises above old dump site		
Proximity to houses 1. Isolated 2. Aware of housing 3. Visible 4. Abutting	Rating 1			
Public Accessibility 1. Isolated no access 2. Accessible with difficulty 3. Accessible walking trails 4. Readily accessible defined roads/tracks	Rating 3	Steep track from Brown hill creek road		
Current Use 1. No sign of use 2. Minor use 3. Occasional use 4. Frequently used regular trails	Rating 1	Graffiti and the area is used as a gathering spot fire places are evident		

BROWNHILL CREEK QUARRY

			Comments
Emergency Access 1. Defined Road 2. Vehicle access 3. Defined walking trail 4. Trail steep, care required 5. No trail	Rating	4	
			Steep trail care required
Historic significance 1. None 2. Minimal value 3. Significant 4. Highly significant	Rating	3	
			Old dump site may be off some value as an dig site in future years
Geological significance 1. None 2. Minor 3. Interesting feature 4. Significant feature	Rating	3	
			Interesting rock face
Vegetation 1. Total exotic 2. Some native vegetation 3. Interesting feature 4. Good native vegetation	Rating	1	
			Exotic vegetation including prickly pear, black berries , olives etc kikuyu grass is also rampant in the area
Fire Risk 1. No risk 2. Slight fire risk 3. Accessible in case of fire 4. Fire trap	Rating	4	
			Minimal access high fuel loading make area a fire trap and potential hazard
Visitation public access 1. None 2. Limited access 3. Moderate access 4. Good access	Rating	2	
Visitor 1. None 2. Minor 3. Potential 4. Good potential	Rating	2	
Potential Recreational Use 1. None 2. Slight 3. Moderate 4. Good	Rating	2	
			Walking trail feature
			Limited access no potential as a recreation area
Comments (Rubbish, erosion, etc) Area heavily infested with weeds Area is also very uneven earth works and digs have left the area very undulating. If the potential was to realised then Council would need to spend considerable \$ on clearing the area and making access to the area reasonable.			

MITCHAM QUARRIES



MITCHAM QUARRIES

ANDERSON'S QUARRIES (1140, 247E)



Fig - AQ1

Opened by the Anderson family in 1849 and worked by them until 1951. Quarry Industries Ltd worked the quarry from 1951 - 1963. The quarry produced huge amounts of building stone, quartzite, slate and sand from two huge faces on the hill and from two smaller ones in the valley (which are all still intact). The first working was from behind the Anderson's house, 26 Old Belair Road, Mitcham. (Royce Wells 1995).

Originally worked on by Charles Anderson, and then by his son, Herbert Anderson, the quarry became Anderson's Quarry Co Ltd and included Murray, Charles, Alf and Ernest, all sons of Herbert Anderson. (*Mit. Council Gen. Corres. Box 4 Vol 16*).

The number of men employed averaged 8. The sandstone was crushed to sand while the quartzite was reduced to crushed stone. The slate was largely supplied for ballast with 743 tonnes being sold as building stone between 1930 and 1946. (Dept of Mines Summary Card, CSIR Bulletin No 190 - HS Cornelius, HA Stevens p23)



Fig – AQ2



Fig – AQ3

			Comments	Actions
Fencing and Signage				
Is quarry area fenced?	Yes ✓	No	Private property on each side of quarry fenced	
Is fence in good repair?	Yes	✓	Fences to be checked for safety	
Is fence appropriate?	✓	No		
Is quarry signed?	Yes	✓	There are signs indicating No dumping of rubbish. No quarry warning signs visible	
Is signage appropriate?	Yes	No ✓	Suggest that signage be looked at	
Description of Quarry Small quartzite quarry/ slate				
Quarry Height 1. < 2.5m 2. 2.5m to 10m 3. 10m to 20m 4. > 20m	Rating 2		Fairly uniform cut	
Stability - Top 1. No loose material/Stable 2. Some loose material 3. Loose material 4. Loose material/Unstable	Rating 2		Some loose material on the top of quarry trees holding top together	
Stability - Bottom 1. No loose material/Stable 2. Some loose material 3. Loose material 4. Loose material/Unstable Gradient 1. Gentle gradient/Walkable 2. Slightly steeper/Unwalkable 3. Sheer 4. Overhanging	Rating ✓			
	Rating ✓			
Proximity to houses 1. Isolated 2. Aware of housing 3. Visible 4. Abutting	Rating ✓		Both sides of quarry	
Public Accessibility 1. Isolated no access 2. Accessible with difficulty 3. Accessible walking trails 4. Readily accessible defined roads/tracks	Rating ✓		On the side of a made road	
Current Use 1. No sign of use 2. Minor use 3. Occasional use 4. Frequently used regular trails	Rating ✓		Minor use by EWS as when cleaning tank	

		Comments	
Emergency Access 1. Defined Road 2. Vehicle access 3. Defined walking trail 4. Trail steep, care required 5. No trail	Rating ✓	Defined road	
Historic significance 1. None 2. Minimal value 3. Significant 4. Highly significant	Rating 2	Significant as part of Andersons quarry area	
Geological significance 1. None 2. Minor 3. Interesting feature 4. Significant feature	Rating ✓	Some good features such as ripple rock and quartz stress fractures	
Vegetation 1. Total exotic 2. Some native vegetation 3. Interesting feature 4. Good native vegetation	Rating ✓	Pines Olives and exotic woody weeds all present	
Fire Risk 1. No risk 2. Slight fire risk 3. Accessible in case of fire 4. Fire trap	Rating 2	Only due to flammable nature of the vegetation around the quarry area	
Visitation public access 1. None 2. Limited access 3. Moderate access 4. Good access	Rating ✓	Good access to the area	
Visitor 1. None 2. Minor 3. Potential 4. Good potential	Rating 2	Close proximity to housing could be of a concern	
Potential Recreational Use 1. None 2. Slight 3. Moderate 4. Good	Rating ✓	Close to suburbs could be developed as a picnic ground	
Comments (Rubbish, erosion, etc)			
Some rubbish present but could do with a tidy up and the removal of exotic vegetation			

			Comments	Actions
Fencing and Signage				
Is quarry area fenced?	Yes	✓	Some of the quarry is on private land	
Is fence in good repair?	Yes	No ✓	Fence alongside of private property	
Is fence appropriate?	Yes	No		
Is quarry signed?	Yes	N ✓o	No signage visible	
Is signage appropriate?	Yes	N ✓o		
Description of Quarry				
Corner of Weemalla and Barina Avenue large quartzite/ slate quarry				
Heavily infested with pines				
Quarry Height 1. < 2.5m 2. 2.5m to 10m 3. 10m to 20m 4. > 20m	Rating			
	4			
Stability - Top 1. No loose material/Stable 2. Some loose material 3. Loose material 4. Loose material/Unstable	Rating			
	2		Some loose material on top of quarry no recent falls noted	
Stability - Bottom 1. No loose material/Stable 2. Some loose material 3. Loose material 4. Loose material/Unstable	Rating			
	3		Some loose material around the base of quarry walls no recent falls obvious	
Gradient 1. Gentle gradient/Walkable 2. Slightly steeper/Un-walkable 3. Sheer 4. Overhanging	Rating		Main face 3 to 4 with other slopes 1	
	3		Walking trail to the north on private property	
Proximity to houses 1. Isolated 2. Aware of housing 3. Visible 4. Abutting	Rating			
	4			
Public Accessibility 1. Isolated no access 2. Accessible with difficulty 3. Accessible walking trails 4. Readily accessible defined roads/tracks	Rating			
	4		Easily access to the area from Weemalla drive also from Randall park to the west following fire track	
Current Use 1. No sign of use 2. Minor use 3. Occasional use 4. Frequently used regular trails	Rating			
	2		Minor use of area mainly for dumping of building materials Not visible from road way	

ANDERSON'S QUARRY 2

			Comments
Emergency (Recovery) 1. Defined Road 2. Vehicle access 3. Defined walking trail 4. Trail steep, care required 5. No trail	Access	Rating	
		1	Defined road less than 50 metres away there is also vehicle access to the base of the quarry
Historic significance 1. None 2. Minimal value 3. Significant 4. Highly significant		Rating	
		2	Could be associated with the other major quarries of the area Anderson's etc
Geological significance 1. None 2. Minor 3. Interesting feature 4. Significant feature		Rating	
		2	Hard to assess as most of the faces were obscured by high pine etc
Vegetation 1. Total exotic 2. Some native vegetation 3. Interesting feature 4. Good native vegetation		Rating	
		1	Pines and Olive trees dominated the quarry area
Fire Risk 1. No risk 2. Slight fire risk 3. Accessible in case of fire 4. Fire trap		Rating	
		2	Slight fire risk due to volatile fuel in Olives and Pines on west facing slope not as critical
			Close proximity to houses
Visitation public access 1. None 2. Limited access 3. Moderate access 4. Good access		Rating	
		4	Off suburban streets and adjoining park
Visitor 1. None 2. Minor 3. Potential 4. Good potential		Rating	
		2	Concern over close proximity to existing houses and limited access through residential streets
Potential Recreational Use 1. None 2. Slight 3. Moderate 4. Good		Rating	
		2	Possibly develop a community park in area Action assess the stability of quarry faces prior developing recreation area
Comments (Rubbish, erosion, etc)			
Building material and rubble dumped in quarry Garden rubbish being dumped in area. Obvious that some walking trails are present in area Follow on with Fire track from Randall Park access to Weemalla drive (must go over private property) Removal of exotic vegetation is required so that area could be developed to its full potential.			

ANDERSON'S - QUARRY 3

			Comments	Actions
Fencing and Signage				
Is quarry area fenced?	Yes	✓	No fences apparent	
Is fence in good repair?	Yes	No		
Is fence appropriate?	Yes	✓		
Is quarry signed?	Yes	✓		Quarry requires signage
Is signage appropriate?	Yes	✓		
Description of Quarry Last Quarry on the left hand side of Weemalla Drive small quarry visible form road but there is a second quarry to the south access is difficult Tailings have been dumped in area for another quarry site slippery Access to the second quarry is difficult				
Quarry Height 1. < 2.5m 2. 2.5m to 10m 3. 10m to 20m 4. > 20m	Rating 2 to 3			
			The quarry faces vary all over the site depending on the position and the amount of fill deposited	
Stability - Top 1. No loose material/Stable 2. Some loose material 3. Loose material 4. Loose material/Unstable	Rating 3			
			Some loose material around the top of quarry area	
Stability - Bottom 1. No loose material/Stable 2. Some loose material 3. Loose material 4. Loose material/Unstable	Rating 4			
			Tailings dumped in area shale and loose rocks make base area hard to climb and unstable.	
			Care required when walking in this quarry	
Gradient 1. Gentle gradient/Walkable 2. Slightly steeper/Un-walkable 3. Sheer 4. Overhanging	Rating 1 to 3			
			Varies over the expanse of the quarry area	
Proximity to houses 1. Isolated 2. Aware of housing 3. Visible 4. Abutting	Rating 2			
			Housing around the quarry area in Weemalla Drive	
Public Accessibility 1. Isolated no access 2. Accessible with difficulty 3. Accessible walking trails 4. Readily accessible defined roads/tracks	Rating 2			
			Accessible with difficulty care required	
Current Use 1. No sign of use 2. Minor use 3. Occasional use 4. Frequently used regular trails	Rating 1			

ANDERSON'S - QUARRY 3

			Comments
Emergency (Recovery) 1. Defined Road 2. Vehicle access 3. Defined walking trail 4. Trail steep, care required 5. No trail	Access	Rating 1 to 4	 The first quarry is adjacent to the paved Weemalla drive area and accessible with care The second section of this quarry is only accessible with difficulty no trails defined
Historic significance 1. None 2. Minimal value 3. Significant 4. Highly significant		Rating 2	 Base of the IXL quarry area
Geological significance 1. None 2. Minor 3. Interesting feature 4. Significant feature		Rating 1	 Tailing area and dumping area of minimal value at present
Vegetation 1. Total exotic 2. Some native vegetation 3. Interesting feature 4. Good native vegetation		Rating 1	 Pines and Olives some Eucalypts on the eastern side of the area possibly on undisturbed land.
Fire Risk 1. No risk 2. Slight fire risk 3. Accessible in case of fire 4. Fire trap		Rating 4	 Fire trap and being at the base of a slope with high fuel load is of concern. If some one were in area there would be no escape.
Visitation public access 1. None 2. Limited access 3. Moderate access 4. Good access		Rating 1	
Visitor 1. None 2. Minor 3. Potential 4. Good potential		Rating 1	
Potential Recreational Use 1. None 2. Slight 3. Moderate 4. Good		Rating 1	
Comments (Rubbish, erosion, etc) Heavily overgrown and with tailings dumped the area is unstable and slippery. Access is difficult of minimal recreation potential.			

McELLIGOTT'S QUARRY (1094, 248)

Opened in 1858 and worked on continuously till 1934, it was one of the largest of the Mitcham Quarries and of great historical significance to the area. A large amount of stone for the Outer Harbour breakwater came from this quarry as did the building stone for the local area and large amounts of stone for road works throughout the Mitcham area.

Originally worked by John McElligott Sen and then by his sons, John, Motimer and Michael. During this period a large quantity of stone was supplied for the Outer Harbour. Five horse trolleys were used to transport the stone from the quarry to the railway station at Mitcham. There were no mechanical arrangements for lifting the stone. Finally John and Michael



McElligott, sons of Michael Sen. worked it, but only for short period. (*Mit. Council Gen. Corrs. Box 4 Vol 16*)

From 1889 - 1896 the land was owned by CB Hardy, a gentleman of Adelaide. After several other owners, the land was transferred to FH Fuller of Fullarton Estate and to the McElligott Brothers, John and Michael who were contractors of Mitcham in 1922. Various developers held it between 1948 and 1955 after which time the Quarry Transport Ltd held it. (*ME Rages Lands Dept. research*)

Correspondence from Quarries Ltd in December 1934 re weighbridge at McElligott's Quarry tells us that:

"This Company as you are aware has no doubt gone into liquidation and receiver is at present endeavouring to dispose of the stock of crushed metal which was on hand at the date of the liquidation of the company." (*Mitcham Council Correspondence Firms "Q" Letter 7*)

This eventually became a Council rubbish dump in 1957 for hard rubbish due to the Springbank Dump closing. (Mitcham Council General Correspondence. Box 4 Vol. 16 and "Mail" 3 Aug. 1957)

MCELLIGOTTS - QUARRY 1

			Comments	Actions
Fencing and Signage				
Is quarry area fenced?	✓	No		
Is fence in good repair?	✓	No		
Is fence appropriate?	✓	No		
Is quarry signed?	✓	No		
Is signage appropriate?	Yes	✓ ✓	Sign required to indicate that persons visiting the area should stay behind the fence as there is a danger of falling stones	
Description of Quarry				
At the Southern end of Carrick Hill Drive a quarry site that has been made into a car park, lookout and recreation area. Was the site of a Quarry many years ago and then a rubbish dump for many years.				
Quarry Height 1. < 2.5m 2. 2.5m to 10m 3. 10m to 20m 4. > 20m	Rating			
	3			
Stability - Top 1. No loose material/Stable 2. Some loose material 3. Loose material 4. Loose material/Unstable	Rating			
	2	Some slips obvious in the area behind fence loose material on the quarry face		
Stability - Bottom 1. No loose material/Stable 2. Some loose material 3. Loose material 4. Loose material/Unstable	Rating			
	3	Loose stone has fallen and is obvious Bunding as installed is working well	May have to clean out fallen material at some time, work plan required.	
Gradient 1. Gentle gradient/Walkable 2. Slightly steeper/Unwalkable 3. Sheer 4. Overhanging	Rating			
	3			
Proximity to houses 1. Isolated 2. Aware of housing 3. Visible 4. Abutting	Rating			
	3	Housing visible at the entrance to car park area		
Public Accessibility 1. Isolated no access 2. Accessible with difficulty 3. Accessible walking trails 4. Readily accessible defined roads/tracks	Rating			
	4	Car parking provided in the area		
Current Use 1. No sign of use 2. Minor use 3. Occasional use 4. Frequently used regular trails	Rating			
	4	Current used as a car park look out area BBQ facilities interpretive signs on quarry faces also indicate geological features		
		Occasionally used by emergency services for rescue exercises		
		Here is a lookout trail above main quarry area that appears to be well used		

MCELLIGOTTS - QUARRY 1

			Comments
Emergency (Recovery) 1. Defined Road 2. Vehicle access 3. Defined walking trail 4. Trail steep, care required 5. No trail	Access	Rating	
		1	
Historic significance 1. None 2. Minimal value 3. Significant 4. Highly significant		Rating	
		4	
Geological significance 1. None 2. Minor 3. Interesting feature 4. Significant feature		Rating	
		4	Signs already exist in the quarry area to explain features
Vegetation 1. Total exotic 2. Some native vegetation 3. Interesting feature 4. Good native vegetation		Rating	
		1	Pines need to be removed from the site totally dominating the landscape Pine tree roots adding to some of the stability problems on the quarry face
Fire Risk 1. No risk 2. Slight fire risk 3. Accessible in case of fire 4. Fire trap		Rating	
		2	Highly flammable vegetation and at the base of a hill could fuel a fire
Visitation public access 1. None 2. Limited access 3. Moderate access 4. Good access		Rating	
		4	Car park area is well used There are some concerns from residents about the frequency of use and the after hours activities.
Visitor 1. None 2. Minor 3. Potential 4. Good potential		Rating	
		4	
			Tourist area car park and look out over city Geological features are of some interest to school students
Potential Recreational Use 1. None 2. Slight 3. Moderate 4. Good		Rating	
			4 Existing could be tidied up presentation
Comments (Rubbish, erosion, etc)			
Swing seat on double junior swing to be replaced as soon, as is possible.			

McElligotts Quarry 2			Comments	Actions
Fencing and Signage				
Is quarry area fenced?	Yes	✓		The quarry needs to be fenced on eastern side by walking trail to quarry 1
Is fence in good repair?	Yes	✓		
Is fence appropriate?	Yes	✓		
Is quarry signed?	Yes	✓		Signs top of quarry potential fall area close to established walking trails
Is signage appropriate?	Yes	✓		
Description of Quarry Large narrow Quarry to the east of the existing car park area access is via the south end of quarry one walking trail The quarry also abuts land recently purchased by Council Brownhill and associated paths with this area.				
Quarry Height 1. < 2.5m 2. 2.5m to 10m 3. 10m to 20m 4. > 20m	Rating 3 4.			
		There is a deep hole within the quarry area northern end of this quarry		
		Southern end of Quarry filled area with a steep decent down to Brownhill creek road		
Stability - Top 1. No loose material/Stable 2. Some loose material 3. Loose material 4. Loose material/Unstable	Rating 2 4.			
		There is a large boulder hanging over quarry that appears to be crackled that needs some attention		
			Large boulder hanging over quarry assess for stability	
Stability - Bottom 1. No loose material/Stable 2. Some loose material 3. Loose material 4. Loose material/Unstable	Rating 3 4.			
		Hole in north end of quarry debris on floor loose material		

Gradient 1. Gentle gradient/Walkable 2. Slightly steeper/Un-walkable 3. Sheer 4. Overhanging	Rating 2 to 3		
		Some areas of quarry face sheer on both sides of the quarry	
		Much of the area is walkable but beware of shale under foot slippery	
		Steep drop to the south where area filled is a concern	Fence required by this steep area potential danger area
Proximity to houses 1. Isolated 2. Aware of housing 3. Visible 4. Abutting	Rating 2		
Public Accessibility 1. Isolated no access 2. Accessible with difficulty 3. Accessible walking trails 4. Readily accessible defined roads/tracks	Rating 3		
Current Use 1. No sign of use 2. Minor use 3. Occasional use 4. Frequently used regular trails	Rating 4		
		Well defined trails into the quarry area from the southern end.	
		Camp fires evident in the quarry area	

Comments		
Emergency Access (Recovery) 1. Defined Road 2. Vehicle access 3. Defined walking trail 4. Trail steep, care required 5. No trail	Rating 3	
		Walking trail is obvious and can be easily accessed
Historic significance 1. None 2. Minimal value	Rating	

3. Significant	3	
4. Highly significant		
Geological significance	Rating	
1. None		
2. Minor	2	Most of the interesting rock faces are on the front quarry area
3. Interesting feature		
4. Significant feature		
Vegetation	Rating	
1. Total exotic		
2. Some native vegetation	2	Lots of pines to be removed from the area
3. Interesting feature		
4. Good native vegetation		
Fire Risk	Rating	
1. No risk		
2. Slight fire risk	4	Volatile fuel load
3. Accessible in case of fire		Access point is narrow confined no vehicles
4. Fire trap		Camp fires are a concern in this area
Visitation public access	Rating	
1. None		
2. Limited access		
3. Moderate access	3	Well worn track
4. Good access		
Visitor	Rating	
1. None		
2. Minor	2	Minor the major focus is on the lookout and geology of the front quarry
3. Potential		
4. Good potential		
Potential Recreational Use	Rating	
1. None		
2. Slight	2	Limited space loose stones
3. Moderate		
4. Good		
Comments (Rubbish, erosion, etc) Of concern are the camp fires in the area There is plenty of dead wood from pines that have fallen or been cleared in this area The steep drop to the south is also of concern		

MCELLIGOTTS - QUARRY 3

			Comments	Actions
Fencing and Signage				
Is quarry area fenced?	✓	No	Quarry fenced at top North side not fenced by walking trail	North side of this quarry to be fenced particularly by walking trail area
Is fence in good repair?	✓	No	Top is fenced Ok	
Is fence appropriate?	✓	No	Top is side fence does not exist	
Is quarry signed?	Yes	✓ ✓	Needs to be signed	Requires signage on the northern side by walking trail and residents
Is signage appropriate?	Yes	No		
Description of Quarry				
West side of quarry car park area adjacent to housing unmade section of Blythewood road Walking trail in this area from Brownhill creek to look out				
Quarry Height 1. < 2.5m 2. 2.5m to 10m 3. 10m to 20m 4. > 20m	Rating			
	2			
Stability - Top 1. No loose material/Stable 2. Some loose material 3. Loose material 4. Loose material/Unstable	Rating			
	2			
		Some loose material on top of bank where constant foot traffic is obvious		
Stability - Bottom 1. No loose material/Stable 2. Some loose material 3. Loose material 4. Loose material/Unstable	Rating			
	1	Area generally grassed to kikuyu		
Gradient 1. Gentle gradient/Walkable 2. Slightly steeper/Un-walkable 3. Sheer 4. Overhanging	Rating			
	1 to 2	Walking trail obvious on the north side	Walking trail needs to be defined with appropriate markers and fencing.	
		There is a step quarry face that is adjacent to the walking trail		
Proximity to houses 1. Isolated 2. Aware of housing 3. Visible 4. Abutting	Rating			
	4			
Public Accessibility 1. Isolated no access 2. Accessible with difficulty 3. Accessible walking trails 4. Readily accessible defined roads/tracks	Rating			
	3			
		Walking trail on the north side		
Current Use 1. No sign of use 2. Minor use 3. Occasional use 4. Frequently used regular trails	Rating			
	2			
		Connecting trail to Brownhill creek caravan park		
		Residents using the area as dumping ground.		

MCELLIGOTTS - QUARRY 3

			Comments
Emergency (Recovery) 1. Defined Road 2. Vehicle access 3. Defined walking trail 4. Trail steep, care required 5. No trail	Access	Rating	
		3	Reasonably steep care required
Historic significance 1. None 2. Minimal value 3. Significant 4. Highly significant		Rating	
	2		
Geological significance 1. None 2. Minor 3. Interesting feature 4. Significant feature		Rating	
		1	
Vegetation 1. Total exotic 2. Some native vegetation 3. Interesting feature 4. Good native vegetation		Rating	
	2		Some native vegetation on the area Heavy infestation of Olives and pines Kikuyu is also a concern in regards to any revegetation plans
Fire Risk 1. No risk 2. Slight fire risk 3. Accessible in case of fire 4. Fire trap		Rating	
	2		Exotic vegetation is of volatile nature
Visitation public access 1. None 2. Limited access 3. Moderate access 4. Good access		Rating	
	3		Develop trail from Brownhill creek to look out at McElligotts quarry
Visitor 1. None 2. Minor 3. Potential 4. Good potential		Rating	
	3		Potential for linking walking trails Brownhill creek reserve McElligotts reserve and Brown hill Reserve.
Potential Recreational Use 1. None 2. Slight 3. Moderate 4. Good		Rating	
	3		Walking trails connecting the area
Comments (Rubbish, erosion, etc) Rubbish being dumped by resident adding to fire danger Old pine trees are also of concern			

FULLER'S QUARRY (Quarry Reserve A on or adjoining Section 1094)



South of, and adjoining McElligott's, this quarry opened in the 1850s and after a period of inactivity was reopened by Frederick Heaton Fuller. The quarry produced the stone for the Outer Harbour breakwater (*Royce Wells 1996*)

Shocking Fatality - Quarryman Killed.

A few minutes after work had begun at Fullers Quarry, Upper Mitcham on

Wednesday morning, Mr James Parkinson an elderly man was killed by a fall of rock. He was married and lived at West Terrace. According to an eye witness of the fatality Mr Parkinson left a dray he was loading and went to the side of the quarry with the object, it is thought, of getting a fork. Directly above him at a height of 100 feet was a quarryman suspended by ropes working stones off the face with a crowbar. Not noticing Mr Parkinson below the quarryman loosened a large stone which crashed down on the head of the unfortunate man below. Workmen rushed to the scene, but their assistance did not avail, death having been instantaneous. Mr P's body was removed to the morgue the Coroner informed. ("*Chronicle*" 18 March 1911)

Owned by Frank Rymill. Large amounts of this stone was carted for the Outer Harbour. (*Mit. Council Gen. Corrs. Box 4 Vol.16*)

Possibly Mr Fuller allowed George Viney to use one high quality bluestone quarry for building the Mitcham and Eastwood Wesleyan/Methodist/Uniting Churches in the 1880s. (*Royce Wells 1998*)

FH Fuller was the managing director of Quarries Ltd.
(*Mitcham Council correspondence- Firms "Q" - 1934 Dec 22*)

SCOTT'S QUARRY (248)



Opened by CWH Fuller in the 1880s, it was worked on in a small way by Scott Anderson, and others up until its closure in the early 1960s. Supplying building stone in its earlier years, its production this century has been entirely stone for road construction.

A man named Martinsen was killed in this quarry, he came through the fence from the Cemetery and fell over the

quarry face, a drop of about 30 feet. (*Mit. Council Gen. Corrs. Box 4 Vol 16*)

Lot 89 Mitcham Village Pt Sec 248

1839 Feb 12 - Land Grant to SA Co.

1840 Nov - Mitcham Village for sale

- Purchased by Rev Ralph Drummond

1858 Dec 7 - Brought under RPA CT2/167

1862 May 12 - 1863 etc Mortgaged for L80

1870 July 22 - Transferred from Drummond to George SCOTT CT 146/815 3 acres.

(*Land Title Research by Pam Oborn*)

Scott was still operating this quarry until at least 1887.

(*Mitcham Council Rate Assessment Books*)

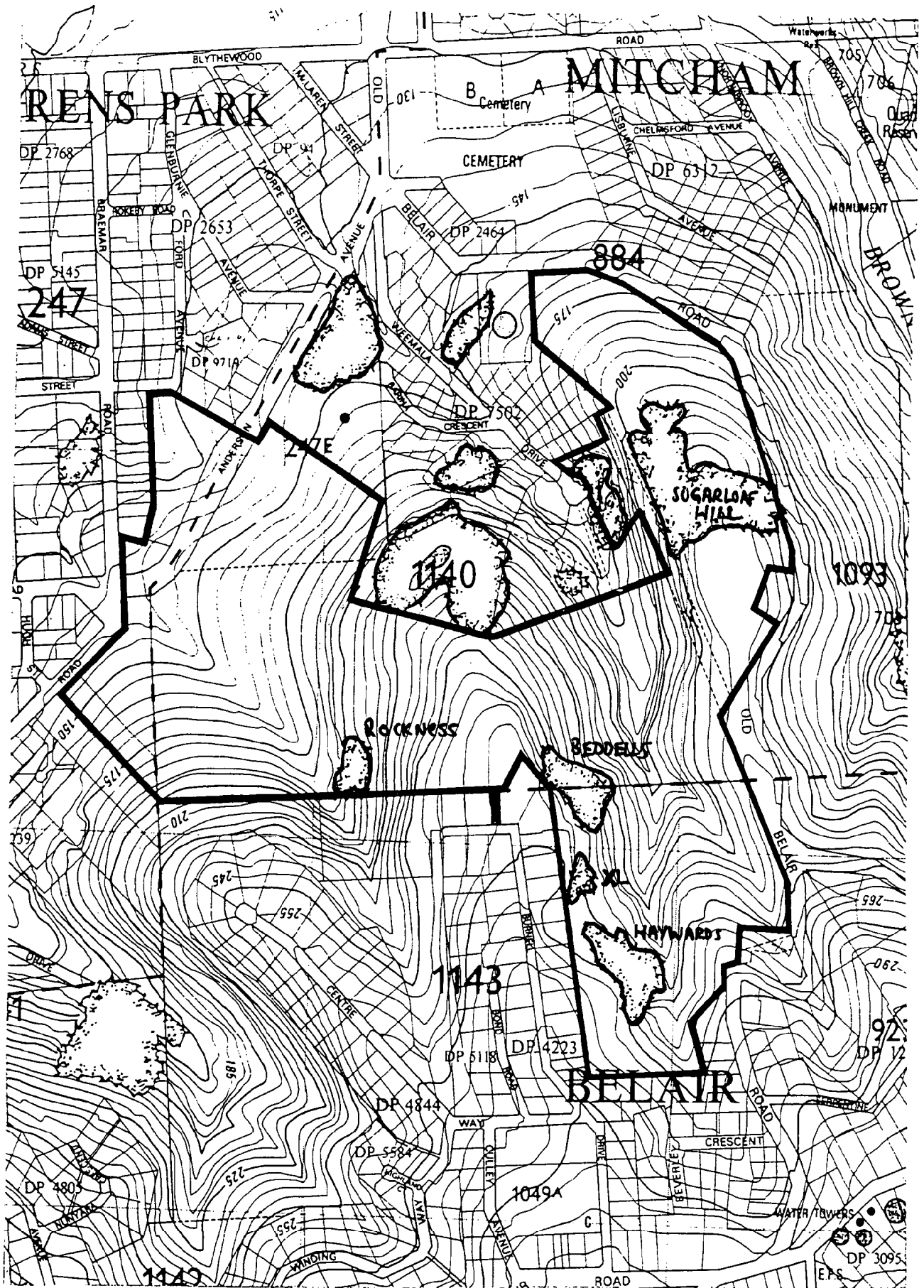
The Anderson associated with this quarry was not related to the Charles Anderson family (*Jim Anderson 1999*)

SCOTTS QUARRY - BLYTHEWOOD ROAD

			Comments	Actions
Fencing and Signage				
Is quarry area fenced?	Yes	✓	Some fence next to Blythewood	Fence along Blythewood road to replaced as soon as possible
Is fence in good repair?	Yes	✓	Fence in poor condition	
Is fence appropriate?	Yes	✓	Needs repairs and upgrading	
Is quarry signed?	Yes	✓		Quarry to be signed as soon as possible
Is signage appropriate?	Yes	✓		
Description of Quarry				
Small quarry on Blythewood Road opposite the Mitcham cemetery not visible form road but is in close proximity to footpath area.				
Quarry Height 1. < 2.5m 2. 2.5m to 10m 3. 10m to 20m 4. > 20m	Rating			
	2		Quarry face obscured by vegetation from Blythewood road area	
Stability - Top 1. No loose material/Stable 2. Some loose material 3. Loose material 4. Loose material/Unstable	Rating			
	2		Some loose material and a slope down to quarry face	
Stability - Bottom 1. No loose material/Stable 2. Some loose material 3. Loose material 4. Loose material/Unstable	Rating			
			.	
	2			
Gradient 1. Gentle gradient/Walkable 2. Slightly steeper/Un-walkable 3. Sheer 4. Overhanging	Rating			
	2		No trails obvious around the quarry area	
Proximity to houses 1. Isolated 2. Aware of housing 3. Visible 4. Abutting	Rating			
	4		Houses on the west side abutting the quarry area	
Public Accessibility 1. Isolated no access 2. Accessible with difficulty 3. Accessible walking trails 4. Readily accessible defined roads/tracks	Rating			
	2		Much of the upper Quarry overgrown with woody weeds such as boxthorn The lower area is secluded behind housing and is not readily accessible	
Current Use 1. No sign of use 2. Minor use 3. Occasional use 4. Frequently used regular trails	Rating			
	2		Minor use of dumping rubbish from adjoining houses	

SCOTTS QUARRY - BLYTHEWOOD ROAD

			Comments
Emergency Access 1. Defined Road 2. Vehicle access 3. Defined walking trail 4. Trail steep, care required 5. No trail	Rating		
	1		
Historic significance 1. None 2. Minimal value 3. Significant 4. Highly significant	Rating		
	2		Fullers opened in 1860 one of several quarries developed by the Fullers in the area
	3		Early houses built from stone from these quarries
Geological significance 1. None 2. Minor 3. Interesting feature 4. Significant feature	Rating		
	1		No faces visible minor quarry
Vegetation 1. Total exotic 2. Some native vegetation 3. Interesting feature 4. Good native vegetation	Rating		
	2		Some native Eucalypts competing with the strong exotic weeds in the area
Fire Risk 1. No risk 2. Slight fire risk 3. Accessible in case of fire 4. Fire trap	Rating		
	2		Slight fire risk flammable material and plants
			A
Visitation public access 1. None 2. Limited access 3. Moderate access 4. Good access	Rating		
	1		
Visitor 1. None 2. Minor 3. Potential 4. Good potential	Rating		
	1		
Potential Recreational Use 1. None 2. Slight 3. Moderate 4. Good	Rating		
	1		
Comments (Rubbish, erosion, etc) Area heavily infested with weeds Not readily accessible and provides minimal value as a recreation area at present In future could be incorporated into a larger reserve area with links to Mitcham Reserve and Brownhill Creek.			



200m



Contour Interval 5 metres

Base Map: Dept. of Lands 1:10 000
No 6628-49 (1987)

2.

TOPOGRAPHY

RANDELL PARK

LOCAL GOVERNMENT QUARRY (1143)

A small quarry east of Hayward's Quarry, at the head of the gully close to the Old Belair Road, was worked on intermittently to supply stone for local road repairs. It is marked by a couple of large pipes half full of concrete, just off the track leading around to the west-side of the gully.



This quarry was opened in 1926 and connected to the crusher by a tramway. (*Mine Inspector's Reports DM 328/24*)

Randall Park Local Gov Quarry			Comments	Actions
Fencing and Signage				
Is quarry area fenced?	Yes	No ✓	Small quarry	Investigate fencing along top of Quarry face
Is fence in good repair?	Yes	No		
Is fence appropriate?	Yes	No		Standard of fencing – Dept Mines – low exposure
Is quarry signed?	Yes	No ✓		Establish signage – appropriate to area
Is signage appropriate?	Yes	No		
Description of Quarry Small 3 pipes quarry – soft sand stone, small ripple feature east rim. “3 pipes what were they used for”				
Quarry Height 1. < 2.5m 2. 2.5m to 10m 3. 10m to 20m 4. > 20m	Rating 3		2.5 to 1.5 max-face	
Stability - Top 1. No loose material/Stable 2. Some loose material 3. Loose material 4. Loose material/Unstable	Rating 2		Thin soil crust	
Stability - Bottom 1. No loose material/Stable 2. Some loose material 3. Loose material 4. Loose material/Unstable	Rating 1			
Gradient 1. Gentle gradient/Walkable 2. Slightly steeper/Unwalkable 3. Sheer 4. Overhanging	Rating 2-3		Main face of quarry	

Proximity to houses 1. Isolated 2. Aware of housing 3. Visible 4. Abutting	Rating 1		
Public Accessibility 1. Isolated no access 2. Accessible with difficulty 3. Accessible walking trails 4. Readily accessible defined roads/tracks	Rating 4	Graded fire track to base of quarry Walking trail south east side of small quarry well used.	
Current Use 1. No sign of use 2. Minor use 3. Occasional use 4. Frequently used regular trails	Rating 1		

		Comments	Action
Emergency Access (Recovery) 1. Defined Road 2. Vehicle access 3. Defined walking trail 4. Trail steep, care required 5. No trail	Rating 2	Gates should be locked – keys may be required for access.	Making sure emergency services have access keys.
Historic significance 1. None 2. Minimal value 3. Significant 4. Highly significant	Rating 2	See notes Maggie Ragless	
Geological significance 1. None 2. Minor 3. Interesting feature 4. Significant feature	Rating 3	Ripple Rock, ochre Introduction area for primary school children	

Vegetation 1. Total exotic 2. Some native vegetation 3. Interesting feature 4. Good native vegetation	Rating 2	Interesting native vegetation Minimal exotic	
Fire Risk 1. No risk 2. Slight fire risk 3. Accessible in case of fire 4. Fire trap	Rating 3	Close to roadway	
Visitation public access 1. None 2. Limited access 3. Moderate access 4. Good access	Rating 4	Easy walking	
Visitor 1. None 2. Minor 3. Potential 4. Good potential	Rating 3	Potential introductory quarry	
Potential Recreational Use 1. None 2. Slight 3. Moderate 4. Good	Rating 2	Use of pipes	
Comments (Rubbish, erosion, etc) Good little quarry – introductory			

SUGAR LOAF HILL QUARRIES (884)

First worked in 1861 when it was known as the Sugar loaf Quarry, RR Torrens was the first owner. Later owners were Sir WW Hughes, & R Barr Smith. In the late 1920s, 20 men were employed. Quarry Industries took it over and it closed in 1931. (*Mitcham Local History Collection MIT 1 QA 00001*)

This represents a collection of what were individual quarries, each operated by separate owners. Gradually leases were extended or amalgamated and finally the entire group became one single lease. The first quarries were opened here in the early 1850s and supplied high quality building stone. The Sugar Loaf Hill group included Gawler's Prince's, Frost, Watson's, Bucholz's, Dunn's and District Council Quarries. Badman Brothers purchased the complete Sugar Loaf Hill quarries and various nearby quarries after World War I operating them all as the XL Quarry. Work on the Sugar Loaf Hill group ceased in 1925 due to the depletion of cheaply accessible good quality stone.



Worked by Michael Dunn. A large amount of metal and screenings was taken from this hill. (*Mit. Council Gen. Corrs. Box 4 Vol 16*).

GAWLER'S QUARRY (884)

A one-acre holding on Sugar Loaf Hill was taken up in the 1850s by Henry Gawler who operated a building stone quarry there. In the 1860s, it was incorporated into adjoining quarries. Henry Gawler was a son of the second SA Governor. Henry Gawler was born in England c1827 and died in 1894 and was a solicitor and barrister by profession. Later the quarry became part of John Prince's Quarry.

XL QUARRY (1093, 1140, 1143)

The Badman Bros, after World War I, acquired many old quarries south of and adjoining Old Belair Road. They worked on them erecting crushing plants, firstly on

the Old Belair Road, and later, in the gully to the south. The quarries they acquired included all the Sugar Loaf Hill group, Beddell's (Wood's) and Haywards.

The XL Quarries on the other side of the gully have very different geological formations and form an excellent basis for another walking tour publication (especially with the ruins visible outside of the geological features). The magnificent spectacle of all the vines and creepers that dangle down over the faces and ridges of both Wood's and Hayward's quarries make them very attractive to people from all walks of life.

In 1926, a new quarry face was opened by the Brothers, however, geological features not anticipated forced work to cease on it within the year. XL Quarries ceased operations in 1927. The western quarry was opened for a width of 60 feet to a height of 50 feet. (*Royce Wells 1995*)



PRINCE'S QUARRY (884)

Opened in the 1850s on Sugar Loaf Hill, the quarry supplied high quality stone for numerous buildings, bridges and houses throughout the Mitcham area and at other settlements throughout the Adelaide region. J. Prince took it up in 1870 and worked it till the 1890s supplying stone for some of the major buildings erected during this period. It was last worked as part of the holdings of XL Quarries in the 1920s but was closed down by them in 1925 when the available stone became exhausted. John Prince also took over Gawler's Quarry.

XL QUARRIES



BEDDELL'S QUARRY (1140) later **WOODS' QUARRY** (extended into Sect.1143)

Opened in the 1890s by R Beddell, the quarry produced stone for local use and for the Outer Harbour breakwater. Richard Hy Beddell married twice and had five children. His wife Catherine O'Dea, previously from Sutton Town in the South East had their youngest child in 1905 in Upper Mitcham. Woods' later took over the quarry until XL Quarries incorporated it into their holdings and worked it until approximately 1930.

During the 1920s XL Quarries were owned by the Badman Brothers, Mr Hall was the Manager and Mr L Hayward was the foreman. A new Crushing Plant and loading bins were installed in 1925. The stone was taken from the quarry to the crusher by a self acting tramway. By early 1926, 3,000 tons of crushing stone had been won from the quarry. Dust was a problem and Mr Badman agreed to lobby the government for a water connection. Meanwhile providing all the mill employees with respirators rectified the problem. Consideration was also given to the installation of a dust exhaust system.

At the end of 1926 the Mine Inspector instructed the manger Mr Hall and foreman Mr Thomas to protect workers from the belt driving the air compressor , the flywheel of the secondary crusher, the bucket elevator of No 2 Primary Crusher and the top landing of the crusher end of the inclined tramway with guard rails. Water pipes were also being laid to combat the problem of dust, which covered everything with a fine layer.

RANDELL PARK HAYWARD'S QUARRY

			Comments	Actions
Fencing and Signage				
Is quarry area fenced?	Yes	No ✓	Investigate fencing on top area – standard	
Is fence in good repair?	Yes	No		
Is fence appropriate?	Yes	No	Dept Mines Guidelines	
Is quarry signed?	Yes	No ✓		Investigate appropriate signage
Is signage appropriate?	Yes	No		
Description of Quarry Note: Large overhanging rock assess for stability Stability of overhanging rocks investigate Quartsite quarry				
Quarry Height 1. < 2.5m 2. 2.5m to 10m 3. 10m to 20m 4. > 20m	Rating 4			
Stability - Top 1. No loose material/Stable 2. Some loose material 3. Loose material 4. Loose material/Unstable	Rating 3	Some evidence minor slips	Investigate overhang area Limit access to top and bottom of quarry – stability issue	
Stability - Bottom 1. No loose material/Stable 2. Some loose material 3. Loose material 4. Loose material/Unstable	Rating 2/3	Varies across length of quarry base		
Gradient 1. Gentle gradient/Walkable 2. Slightly steeper/Unwalkable 3. Sheer 4. Overhanging	Rating 4	Concer re overhang		
Proximity to houses 1. Isolated 2. Aware of housing 3. Visible 4. Abutting	Rating 4	Houses Burnell Drive backing onto quarry		
Public Accessibility 1. Isolated no access 2. Accessible with difficulty 3. Accessible walking trails 4. Readily accessible defined roads/tracks	Rating 4	Graded track		
Current Use 1. No sign of use 2. Minor use 3. Occasional use 4. Frequently used regular trails	Rating 1	No sign of use on quarry		

			Comments	Actions
Emergency Access 1. Defined Road 2. Vehicle access 3. Defined walking trail 4. Trail steep, care required 5. No trail	Rating 2			
Historic significance 1. None 2. Minimal value 3. Significant 4. Highly significant	Rating 3		Haywood Quarry Quartsite, riding, decomposed slate base	See M Ragless Report
Geological significance 1. None 2. Minor 3. Interesting feature 4. Significant feature	Rating 3		Exposed rock types Folding was noticeable Vertical bedding planes	
Vegetation 1. Total exotic 2. Some native vegetation 3. Interesting feature 4. Good native vegetation	Rating 2		Heavily infested Olives, Pines	
Fire Risk 1. No risk 2. Slight fire risk 3. Accessible in case of fire 4. Fire trap	Rating 4		High fuel load on bottom side of quarry, bend in road, access	
Visitation public access 1. None 2. Limited access 3. Moderate access 4. Good access	Rating 4			
Visitor 1. None 2. Minor 3. Potential 4. Good potential	Rating 4			
Potential Recreational Use 1. None 2. Slight 3. Moderate 4. Good	Rating 3		Signage geological structures – rock climbing	
Comments (Rubbish, erosion, etc) Some rubbish, exotic vegetation to be removed.				

Fencing and Signage			Comments	Actions
Is quarry area fenced?	Yes ✓	No	Private boundary fencing on top	Check fencing standard Continuity
Is fence in good repair?	Yes ✓	No	Maybe see above	
Is fence appropriate?	Yes	No ✓		
Is quarry signed?	Yes	No ✓	Signage required	Standard Dept Mines Warning signs
Is signage appropriate?	Yes	No		
Description of Quarry				
Quarry Height 1. < 2.5m 2. 2.5m to 10m 3. 10m to 20m 4. > 20m	Rating 4			
Stability - Top 1. No loose material/Stable 2. Some loose material 3. Loose material 4. Loose material/Unstable	Rating 2		Some loose material on top	
Stability - Bottom 1. No loose material/Stable 2. Some loose material 3. Loose material 4. Loose material/Unstable Gradient 1. Gentle gradient/Walkable 2. Slightly steeper/Unwalkable 3. Sheer 4. Overhanging	Rating 2		Some loose material	
	Rating 4		And overhanging rock on top	
Proximity to houses 1. Isolated 2. Aware of housing 3. Visible 4. Abutting	Rating 4			
Public Accessibility 1. Isolated no access 2. Accessible with difficulty 3. Accessible walking trails 4. Readily accessible defined roads/tracks	Rating 4		Fire track, graded finishes, walking track beyond	Sign, No vehicles beyond this point. C Rock
Current Use 1. No sign of use 2. Minor use 3. Occasional use 4. Frequently used regular trails	Rating 1			

		Comments	
Emergency Access 1. Defined Road 2. Vehicle access 3. Defined walking trail 4. Trail steep, care required 5. No trail	Rating	2	End of Track
Historic significance 1. None 2. Minimal value 3. Significant 4. Highly significant	Rating	2	As part of series of Quarries may have greater value
Geological significance 1. None 2. Minor 3. Interesting feature 4. Significant feature	Rating	3	Interesting features
Vegetation 1. Total exotic 2. Some native vegetation 3. Interesting feature 4. Good native vegetation	Rating	2	Sheoaks top NW corner Euc's Acfacia
Fire Risk 1. No risk 2. Slight fire risk 3. Accessible in case of fire 4. Fire trap	Rating	4	If exotics removed maybe a shelter area could be provided
Visitation public access 1. None 2. Limited access 3. Moderate access 4. Good access	Rating	4	Good access
Visitor 1. None 2. Minor 3. Potential 4. Good potential	Rating	3	Potential
Potential Recreational Use 1. None 2. Slight 3. Moderate 4. Good	Rating	3	Abseiling possibility Bushwalking
Comments (Rubbish, erosion, etc) Storm water run off from house Rubbish – Tins Nasturtium blackberries			

RANDALL PARK BEDDELL'S QUARRY

Fencing and Signage			Comments	Actions
Is quarry area fenced?	Yes	No ✓	Perma Pine barrier fence, Burnell Drive - some distance from face of quarry	Fence required as soon as possible
Is fence in good repair?	Yes	No		
Is fence appropriate?	Yes	No		
Is quarry signed?	Yes	No ✓		
Is signage appropriate?	Yes	No		
Description of Quarry See Maggie Ragless Burnell Drive area - City look out				
Quarry Height 1. < 2.5m 2. 2.5m to 10m 3. 10m to 20m 4. > 20m	Rating 3			
Stability - Top 1. No loose material/Stable 2. Some loose material 3. Loose material 4. Loose material/Unstable	Rating 2	Some loose material		
Stability - Bottom 1. No loose material/Stable 2. Some loose material 3. Loose material 4. Loose material/Unstable Gradient 1. Gentle gradient/Walkable 2. Slightly steeper/Unwalkable 3. Sheer 4. Overhanging	Rating 2	Uneven at base loose material, difficult to walk		
	Rating 3			
Proximity to houses 1. Isolated 2. Aware of housing 3. Visible 4. Abutting	Rating 4	House Burnell Drive		
Public Accessibility 1. Isolated no access 2. Accessible with difficulty 3. Accessible walking trails 4. Readily accessible defined roads/tracks	Rating 3	Walking trails and top and bottom of Quarry Beyond graded track		
Current Use 1. No sign of use 2. Minor use 3. Occasional use 4. Frequently used regular trails	Rating 1			

		Comments	Action
Emergency Access 1. Defined Road 2. Vehicle access 3. Defined walking trail 4. Trail steep, care required 5. No trail	Rating 3	Care required EWS line filled in - uneven	
Historic significance 1. None 2. Minimal value 3. Significant 4. Highly significant	Rating 3	Beddell 1890 Outer harbour breakwater Woods - XL Quarry 1930	
Geological significance 1. None 2. Minor 3. Interesting feature 4. Significant feature	Rating 4	Mud stone - lamination, Quartisite, faulting visible.	
Vegetation 1. Total exotic 2. Some native vegetation 3. Interesting feature 4. Good native vegetation	Rating 2	Some good over storey plants	
Fire Risk 1. No risk 2. Slight fire risk 3. Accessible in case of fire 4. Fire trap	Rating 4	High fire risk heavy fuel load	
Visitation public access 1. None 2. Limited access 3. Moderate access 4. Good access	Rating 3		
Visitor 1. None 2. Minor 3. Potential 4. Good potential	Rating 3	Potential geological features	
Potential Recreational Use 1. None 2. Slight 3. Moderate 4. Good	Rating 4	Good	
Comments (Rubbish, erosion, etc) Rubbish on floor or quarry. Main face fracture, instability			Clean up, check stability, erosion potential

RANDELL PARK Q4 - SUGARLOAF HILL QUARRIES

			Comments	Actions
Fencing and Signage				
Is quarry area fenced?	Yes	No ✓	Fencing keeps getting removed	
Is fence in good repair?	Yes	No		
Is fence appropriate?	Yes	No ✓	Suggest large boulders - to restrict vehicle access (boulders from quarry)	High action - immediate
Is quarry signed?	Yes	No ✓		Signage urgent
Is signage appropriate?	Yes	No		
Description of Quarry				
Sugar Loaf Hill Quarries (884) - This represents a collection of what were individual quarries originally, each operated by separate owners. Gradually leases were extended or amalgamated and finally the entire group became one signal lease. The first quarries were opened here in the early 1850s and supplied high quality building stone. The Sugar Load Hill group included Gawler's Prince's, Frost and Watson's, Bucholz's, Dunn's and District Council quarries. Badman Brothers purchased the complete Sugar Loaf Hill quarries and various other nearby after World War I and operated them all as the XL Quarry. Work on the Sugar Loaf Hill group ceased in 1925 due to the depletion of cheaply accessible good quality stone. <i>(R Wells notes)</i> Series of slate quartz quarry - Series of 3 smaller quarries in site. City lookout				
Quarry Height 1. < 2.5m 2. 2.5m to 10m 3. 10m to 20m 4. > 20m	Rating 4			
Stability - Top 1. No loose material/Stable 2. Some loose material 3. Loose material 4. Loose material/Unstable	Rating 2	Varies across quarry faces Top of area cleared. No vegetation holding soil	Plant vegetation to stabilise soils	
Stability - Bottom 1. No loose material/Stable 2. Some loose material 3. Loose material 4. Loose material/Unstable	Rating 2			
	Rating 3			
Gradient 1. Gentle gradient/Walkable 2. Slightly steeper/Unwalkable 3. Sheer 4. Overhanging				
Proximity to houses 1. Isolated 2. Aware of housing 3. Visible 4. Abutting	Rating 1			
Public Accessibility 1. Isolated no access 2. Accessible with difficulty 3. Accessible walking trails 4. Readily accessible defined roads/tracks	Rating 3	Walking trails	Needs to be well secured	
	4	Tracks well used		
Current Use 1. No sign of use 2. Minor use 3. Occasional use 4. Frequently used regular trails	Rating 4	Abseiling Rock climbing Camp fires		

		Comments	
Emergency Access 1. Defined Road 2. Vehicle access 3. Defined walking trail 4. Trail steep, care required 5. No trail	Rating 2	Access gates	
Historic significance 1. None 2. Minimal value 3. Significant 4. Highly significant	Rating 4	See notes past history	
Geological significance 1. None 2. Minor 3. Interesting feature 4. Significant feature	Rating 4	Sheer face - flat even bedding of slate	
Vegetation 1. Total exotic 2. Some native vegetation 3. Interesting feature 4. Good native vegetation	Rating 2	Minimal native vegetation, mainly pines	
Fire Risk 1. No risk 2. Slight fire risk 3. Accessible in case of fire 4. Fire trap	Rating 3	Southern side of gully Fire vehicle access	
Visitation public access 1. None 2. Limited access 3. Moderate access 4. Good access	Rating 4		
Visitor 1. None 2. Minor 3. Potential 4. Good potential	Rating 4		
Potential Recreational Use 1. None 2. Slight 3. Moderate 4. Good	Rating 4		
Comments (Rubbish, erosion, etc) Abseiling - look out - Removal of pines - Cars breaking into reserve - dangerous cliff face		Urgent signage fencing Good crop kangaroo grass Proper car parks Observation points etc	

ROCKNESS HILL QUARRY (1140)

Samuel and Harriet Saunders arrived in SA in 1850 aboard the “Stag”. The Quarry was opened by Samuel Saunders in about 1854 in partnership with Charles Anderson. The first working was opened at the western side of the block and this produced stone for local building. The Saunders’ had a family of four and one daughter married Nathan Horner, a stonemason in 1865. In the following year they won the contract to build Horner’s Bridge over the Sturt River near Coromandel Valley. Later the partnership between Saunders and Anderson was dissolved and Mr Saunders opened a larger quarry on the hill behind his house and orchard before his death in 1885, this became known as Rockness Hill. He was buried at the age of 60 years in an unmarked grave in Mitcham General Cemetery.



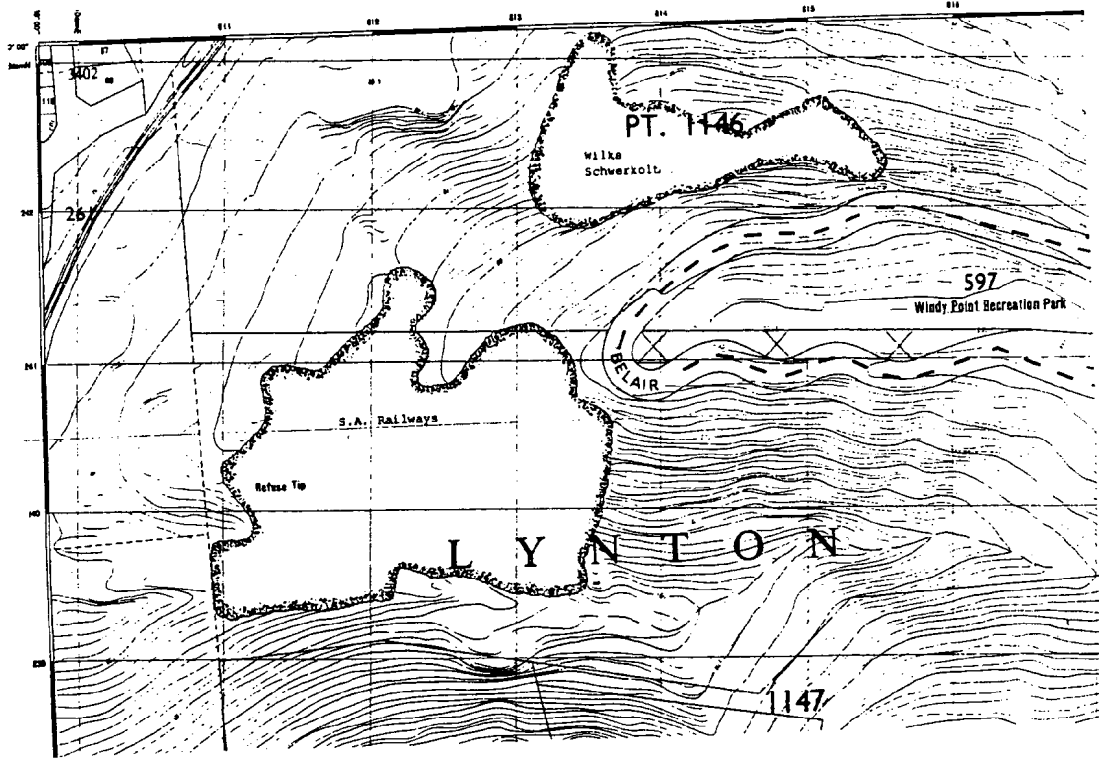
Various operators continued to work the quarry sporadically until Anderson brothers acquired the lease and worked it in conjunction with their adjoining quarries. Glen Osmond Quarries Limited purchased the quarry thereafter but work was not continued.

This area was bought by Mitcham Council in 1973.

			Comments	Actions
Fencing and Signage				
Is quarry area fenced?	Yes	No ✓		
Is fence in good repair?	Yes	No	Consider fencing	Low exposure fencing
Is fence appropriate?	Yes	No	N/A	
Is quarry signed?	Yes	No ✓		Signage required top and bottom.
Is signage appropriate?	Yes	No		
Description of Quarry				
Section 1140 Rotnest Hill - 1854 opened Local building stone - Andersons worked area.				
Quarry Height 1. < 2.5m 2. 2.5m to 10m 3. 10m to 20m 4. > 20m	Rating 2			
Stability - Top 1. No loose material/Stable 2. Some loose material 3. Loose material 4. Loose material/Unstable	Rating 4		Slips in last few years. Large boulders a concern	 Investigate stability
Stability - Bottom 1. No loose material/Stable 2. Some loose material 3. Loose material 4. Loose material/Unstable	Rating 4		Lots of pieces - loose slate material base of walls Walking trail through centre of quarry	
Gradient 1. Gentle gradient/Walkable 2. Slightly steeper/Unwalkable 3. Sheer 4. Overhanging	Rating 2 to 3			
Proximity to houses 1. Isolated 2. Aware of housing 3. Visible 4. Abutting	Rating 2			
Public Accessibility 1. Isolated no access 2. Accessible with difficulty 3. Accessible walking trails 4. Readily accessible defined roads/tracks	Rating 4		CFS fire track to quarry Some camp fires in area	
Current Use Quarry Face 1. No sign of use 2. Minor use 3. Occasional use 4. Frequently used regular trails	Rating		Camp fires at base of quarry Dog	Assess use

			Comments
Emergency Access (Recovery) 1. Defined Road 2. Vehicle access 3. Defined walking trail 4. Trail steep, care required 5. No trail	Rating		
	2	CFS fire tracks	
Historic significance 1. None 2. Minimal value 3. Significant 4. Highly significant	Rating	Early quarry 1854	
	3	Samuel Saunders - Builder of note	
Geological significance 1. None 2. Minor 3. Interesting feature 4. Significant feature	Rating		
	2		
Vegetation 1. Total exotic 2. Some native vegetation 3. Interesting feature 4. Good native vegetation	Rating	Olives, bridal creeper	
	2		
Fire Risk 1. No risk 2. Slight fire risk 3. Accessible in case of fire 4. Fire trap	Rating	Fire trap once inside quarry	
	4		
Visitation public access 1. None 2. Limited access 3. Moderate access 4. Good access	Rating	Camp fires, dog walking, etc	
	4		
Visitor 1. None 2. Minor 3. Potential 4. Good potential	Rating	Isolated quarry, small, insignificant	
	2	Viewing of Impeded by Olives	
Potential Recreational Use 1. None 2. Slight 3. Moderate 4. Good	Rating	Slopes - unstable	
	1		
Comments (Rubbish, erosion, etc) Large rock falls recent history Graffiti Weeds, Bridal Creeper, etc			

LYNTON QUARRIES



LYNTON QUARRIES

WILKE'S QUARRY (1075) Lynton Dump Quarries

Herman Leonard Julius Wilke opened two quarries (Harbour and Crusher) in 1870 and worked them to 1882. Mr Wilke was a merchant and a director of HL Wilke and Company at Port Adelaide.

In 1879 Thomas K Johnston and Wilke opened a large quarry north of them. In 1882, as partners, all three quarries came under their joint ownership. The following year they were underleased to the Mitcham Railway Quarry Co Ltd but were resumed by the original owners in 1887.

A Schwerkolt acquired them in 1902, Metal Quarries Co. in 1924, and Adelaide Quarries Ltd. in 1928. Work ceased on the quarries in the 1950s.



LYNTON QUARRY 2 - (WILKES QUARRY)

			Comments	Actions
Fencing and Signage				
Is quarry area fenced?	Yes	✓	Some fencing to the north of the quarry area above face not fenced	Fences above quarry face required
				Fences around base to restrict access to water area required
Is fence in good repair?	Yes	✓		
Is fence appropriate?	Yes	✓		
Is quarry signed?	Yes	✓		Quarry to be signed as soon as possible
Is signage appropriate?	Yes	✓		
Description of Quarry				
Referred to as area G. The Quarry was originally filled with garbage this has been removed and we are left with a large hole and exposed quarry face There is water laying in the base area approx 1 metre deep				
Quarry Height 1. < 2.5m 2. 2.5m to 10m 3. 10m to 20m 4. > 20m	Rating	4		
			Sheer walls to quarry face	
Stability - Top 1. No loose material/Stable 2. Some loose material 3. Loose material 4. Loose material/Unstable	Rating	4		
			Loose material along top of quarry area slopes down to quarry face	See fencing requirements
Stability - Bottom 1. No loose material/Stable 2. Some loose material 3. Loose material 4. Loose material/Unstable	Rating	3		
			Some loose material water ponding is a concern area to be fenced or filled	Fence or fill quarry area where water ponding Management plan
Gradient 1. Gentle gradient/Walkable 2. Slightly steeper/Un-walkable 3. Sheer 4. Overhanging	Rating	3		
			North side there are trails that lead into the quarry area	
Proximity to houses 1. Isolated 2. Aware of housing 3. Visible 4. Abutting	Rating	1		
Public Accessibility 1. Isolated no access 2. Accessible with difficulty 3. Accessible walking trails 4. Readily accessible defined roads/tracks	Rating	2		
			Walking trail to the east of quarry area	
Current Use 1. No sign of use 2. Minor use 3. Occasional use 4. Frequently used regular trails	Rating	2		
			Trail indicates minor use water could be an attraction to local youth if access available	

LYNTON QUARRY 2 - AREA G (WILKES QUARRY)

			Comments
Emergency (Recovery) 1. Defined Road 2. Vehicle access 3. Defined walking trail 4. Trail steep, care required 5. No trail	Access	Rating	
		2	
Historic significance 1. None 2. Minimal value 3. Significant 4. Highly significant		Rating	
		2	
Geological significance 1. None 2. Minor 3. Interesting feature 4. Significant feature		Rating	
		2	Minor fold visible in quarry face
Vegetation 1. Total exotic 2. Some native vegetation 3. Interesting feature 4. Good native vegetation		Rating	
		3	Good stands of native vegetation around the quarry where there has been minimal disturbance
Fire Risk 1. No risk 2. Slight fire risk 3. Accessible in case of fire 4. Fire trap		Rating	
		1	
Visitation public access 1. None 2. Limited access 3. Moderate access 4. Good access		Rating	
		2	
Visitor 1. None 2. Minor 3. Potential 4. Good potential		Rating	
		1	
Potential Recreational Use 1. None 2. Slight 3. Moderate 4. Good		Rating	
		1	Stability of surrounds and quarry face a concern
Comments (Rubbish, erosion, etc) The area is readily accessible and is at present attractive to children with the presence of water in the base of the quarry Area needs to be fenced as soon as possible for safety Phil Adams re management plan for the dump area to be considered as part of the consideration for this area			

SCHWERKOLT'S QUARRY (1146, 1075)

In 1902 Augustus Schwerkolt took up a group of existing quarries and worked them all on a large scale. These included:

1. The Harbour Quarry, opened by H Wilke & Co in 1870 that supplied the first stone for the Outer Harbour breakwater.
2. The Crusher Quarry, also opened by Wilke in the 1870s
3. Wilke and Johnston's Quarry, opened by them in 1879 was the largest operation. Metal Quarries Ltd took up the property in 1924, and Adelaide Quarries Ltd in 1920 and they operated the complex up to the late 1930s

Several fatal accidents occurred in this quarry including that of Albert Schwerkolt who was killed after falling from a platform of the crushing plant. (*Mit. Council Gen. Corrs. Box 4 Vol 16., and Record of Mines Summary card.*)

One of the most beautiful quarry sites of the Mitcham area is the 2 part Schwerkolt's Quarry below Belair Road, a huge face visible all across the Adelaide Plains, and one that can inspire pages of geological examination. (*Royce Wells 1995*)

LYNTON DEPOT - SCHWERKOLT'S QUARRY

			Comments	Actions
Fencing and Signage				
Is quarry area fenced?	Yes	✓		
Is fence in good repair?	Yes	✓		
Is fence appropriate?	Yes	✓	Fencing at the top of quarry below windy point may be required if there is a walking trail In this area	Check Windy point area for walking trails to top of quarry 1
Is quarry signed?	Yes	✓		Quarry to be signed both top and bottom.
Is signage appropriate?	Yes	✓		
Description of Quarry Quarry is to the east of the Lynton Works depot at Lynton Quarry is a large area with several faces, benched areas and filled areas all associated with the works There are several trails leading up to the base of the quarry from Lynton depot and Seaview Road.				
Quarry Height 1. < 2.5m 2. 2.5m to 10m 3. 10m to 20m 4. > 20m	Rating			
	4	Sheer walls to quarry face		
Stability - Top 1. No loose material/Stable 2. Some loose material 3. Loose material 4. Loose material/Unstable	Rating			
	3	Loose material observed stability may be a problem with continued weathering		
Stability - Bottom 1. No loose material/Stable 2. Some loose material 3. Loose material 4. Loose material/Unstable	Rating			
	3	Large boulders and loose rocks at the base of most of the quarry area		
Gradient 1. Gentle gradient/Walkable 2. Slightly steeper/Un-walkable 3. Sheer 4. Overhanging	Rating			
	3 to 4	Some rocks appear to be overhanging the quarry floor Detailed assessment may be required		Detailed assessment of rock stability required.
Proximity to houses 1. Isolated 2. Aware of housing 3. Visible 4. Abutting	Rating			
	2	Seaview road not far away easy access to base of quarry The top of quarry is below Windy Point lookout		
Public Accessibility 1. Isolated no access 2. Accessible with difficulty 3. Accessible walking trails 4. Readily accessible defined roads/tracks	Rating			
	3	Trails are readily found at the base area of quarry		
Current Use 1. No sign of use 2. Minor use 3. Occasional use 4. Frequently used regular trails	Rating			
	3	Walking trails camp fires indicate area is used frequently		

LYNTON DEPOT -SCHWERKOLT'S QUARRY

			Comments
Emergency (Recovery) 1. Defined Road 2. Vehicle access 3. Defined walking trail 4. Trail steep, care required 5. No trail	Access	Rating	
		4	Steep trail care required no vehicle access
Historic significance 1. None 2. Minimal value 3. Significant 4. Highly significant		Rating	
		3	The area was worked up until the 1960 period
Geological significance 1. None 2. Minor 3. Interesting feature 4. Significant feature		Rating	
		4	Interesting features including the Eden Fault line bedding planes and fractures visible
Vegetation 1. Total exotic 2. Some native vegetation 3. Interesting feature 4. Good native vegetation		Rating	
		2	Some native trees in undisturbed areas worked areas high infestation of exotic vegetation
Fire Risk 1. No risk 2. Slight fire risk 3. Accessible in case of fire 4. Fire trap		Rating	
		4	Minimal access high fuel loading make area a fire trap and potential hazard
Visitation public access 1. None 2. Limited access 3. Moderate access 4. Good access		Rating	
		2	Trails overgrown and not clearly marked Action to improve the trails includes suitable sign markers and clearly defined trails.
Visitor 1. None 2. Minor 3. Potential 4. Good potential		Rating	
		3	Potential exist for hills face walking trails linking areas to Shepherds Hill Recreation Park
Potential Recreational Use 1. None 2. Slight 3. Moderate 4. Good		Rating	
		3	There is a concern over safety in area uneven surfaces steep slopes and fire risk
Comments (Rubbish, erosion, etc)			
Huge Quarry area With some recreation potential needs to be signed as soon as possible (safety) and overgrown vegetation requires management plan for area and associated Lynton Depot area			

S.A. RAILWAYS QUARRY (261, 1147) (Lynton Dump Quarries)



QUARRY Sec. 1147

1894 October 11

From J. Gardener offer to work quarry on road north of Sec 1147 at 3d per cubic yard, monthly. Accepted. (Mitcham Council Minutes)

1901 saw D & M O'Neil working this quarry

D & M O'Neil opened four quarries here in 1901. In 1909 the SA Railways acquired the lease operating it on a large scale until 1927 when the

property passed to Adelaide Quarries Ltd who continued operations until the 1950s.

The SA RAILWAYS QUARRY at Lynton is very significant to the local and railway history. The important geological features especially on the high eastern faces (which were featured in a number of Department of Mines reports) were used by school and geological groups until they were drowned by the rising tide of rubbish about 10 years ago. The quarry complex which has faces of up to 100 feet in vertical height, had richly rejuvenated itself by the 1960s and resembled a great gorge in the Flinders Ranges entered through a narrow and steep cutting from the quarry floor down to the railway siding. The filling and obliteration of this quarry is to be considered as one of the great crimes committed by Mitcham Council. (*Royce Wells 1995*)



LYNTON DEPOT - SA RAILWAYS QUARRY

			Comments	Actions
Fencing and Signage				
Is quarry area fenced?	Yes	✓		
Is fence in good repair?	Yes	✓		
Is fence appropriate?	Yes	✓		
Is quarry signed?	Yes	✓		Quarry to be signed as soon as possible
Is signage appropriate?	Yes	✓		
Description of Quarry The old Lynton dump site 4 small quarries that are on the north side of the rehabilitation area for the dump. The dump area itself was at one stage also a quarry area but has been filled with garbage over the last 40 years. Management plan for closure gas extraction plant operating				
Quarry Height 1. < 2.5m 2. 2.5m to 10m 3. 10m to 20m 4. > 20m	Rating 4		Quarry faces vary but most had at least one wall that exceeds more that 20 metres in height	
Stability - Top 1. No loose material/Stable 2. Some loose material 3. Loose material 4. Loose material/Unstable	Rating 3		The tops of quarries appear to be sloping downwards and appear to be covered with loose material	
Stability - Bottom 1. No loose material/Stable 2. Some loose material 3. Loose material 4. Loose material/Unstable	Rating 3		Some shale and loose rock at the base of quarry walls	
Gradient 1. Gentle gradient/Walkable 2. Slightly steeper/Un-walkable 3. Sheer 4. Overhanging	Rating 2 to 3		Each quarry face varies slightly but most are steep to sheer	
Proximity to houses 1. Isolated 2. Aware of housing 3. Visible 4. Abutting	Rating 1			
Public Accessibility 1. Isolated no access 2. Accessible with difficulty 3. Accessible walking trails 4. Readily accessible defined roads/tracks	Rating 2		The mead street walking trails are to the south of the dump area Walking trails are obvious in the area	
Current Use 1. No sign of use 2. Minor use 3. Occasional use 4. Frequently used regular trails	Rating 2			

LYNTON DEPOT - SA RAILWAYS QUARRY

			Comments
Emergency (Recovery) 1. Defined Road 2. Vehicle access 3. Defined walking trail 4. Trail steep, care required 5. No trail	Access	Rating	
		2	Gates to the area are padlocked
Historic significance 1. None 2. Minimal value 3. Significant 4. Highly significant		Rating	
		3	Quarrying technique and the size of the workings along with the duration they were worked for add to the historical significance of this site
Geological significance 1. None 2. Minor 3. Interesting feature 4. Significant feature		Rating	
		4	There are some great rock features visible in this area May be consider incorporating this area into mead street walking trail with interpretive signage at some time in the future.
Vegetation 1. Total exotic 2. Some native vegetation 3. Interesting feature 4. Good native vegetation		Rating	
		2	Some native vegetation along the perimeters of the worked areas Some good remnant vegetation to the east of the sites
Fire Risk 1. No risk 2. Slight fire risk 3. Accessible in case of fire 4. Fire trap		Rating	
		2	
Visitation public access 1. None 2. Limited access 3. Moderate access 4. Good access		Rating	
		2	
Visitor 1. None 2. Minor 3. Potential 4. Good potential		Rating	
		1	
Potential Recreational Use 1. None 2. Slight 3. Moderate 4. Good		Rating	
		4	Potential to establish walking trail linkages to mead street reserve
Comments (Rubbish, erosion, etc) Methane extraction unit working on the site continuously extracting 5000M3 of gas daily interpretive signs may be of a benefit in this area Potential for revegetation project (native grasses) on the old dump site filled area Removal of exotic vegetation in order preserve native vegetation on the unworked areas.			

SLEEPS HILL QUARRIES

ADELAIDE QUARRIES (1148, 1073, 1074, 1080, 1147)

Opened in 1915 by Burt and Timms, who had the contract for building some of the houses and all of the roads in Colonel Light Gardens.

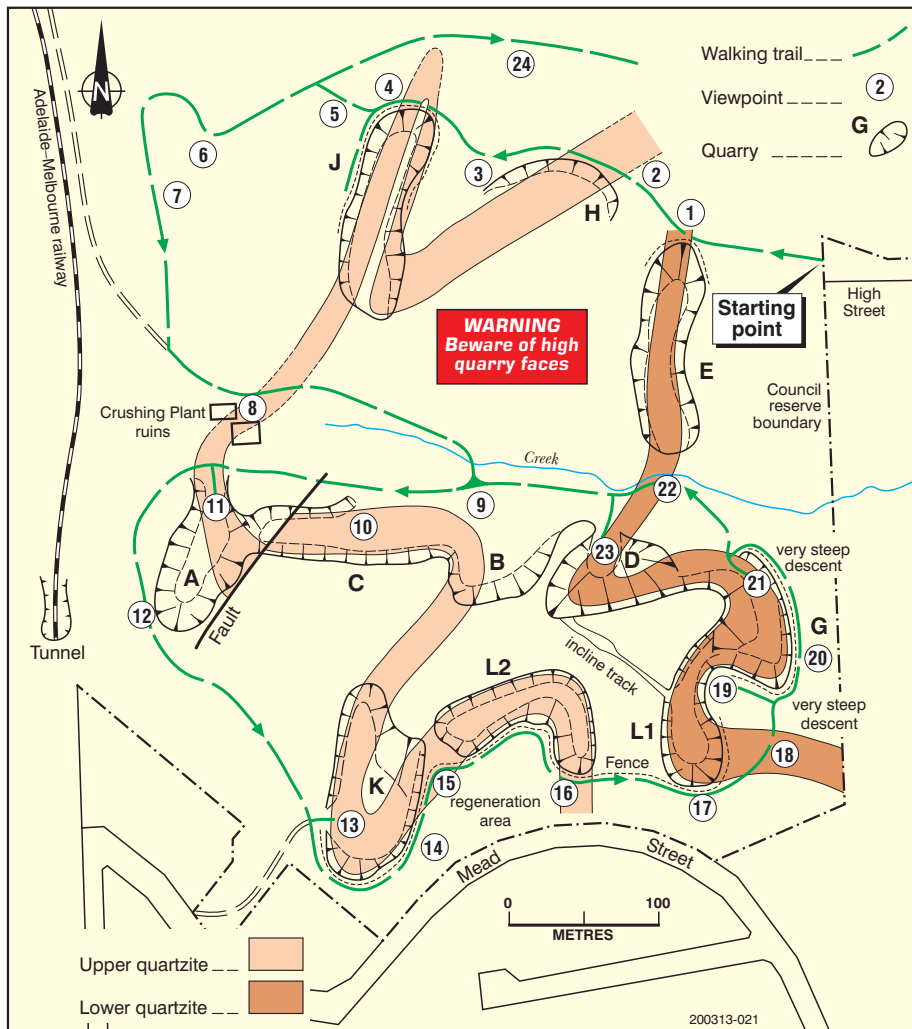
In 1919, Adelaide Quarries Ltd was formed to work them on a large scale. Work ceased in the mid 1950's with total production exceeding 7 million tons and 11 individual workings.

The Adelaide Quarries complex near Sleep's Hill, is the subject of a geological booklet published by the Department of Mines and Energy. The booklet brings to life the geological significance of each of the many, totally unique quarry faces. The quarries are now incorporated into a series of beautiful and interesting walking trails within the Mitcham area. The great 100 ft. face of the "D Quarry" is one of the most exciting natural rock faces anyone could wish to see in the Adelaide Hills.

In 1986 a walk brochure was produced which is an excellent guide to the area enabling walkers to become better informed about the geological features and the quarry industry.

By 1925 Quarries A & E were practically exhausted and a new face to the east of Quarry D and on a higher elevation had been opened. Water sprays on material fed to the crushers was considered a great improvement. Mr Gillick was the Works Manager and Mr Gunter the Mill foreman and they were instructed that a large proportion of the dust must be suppressed and guard rails around the main driving belt and shafting need to be installed.

Quarry H was opened by September 1925 in a northerly direction about 30 feet wide and 20 feet high. It showed masses of quartzite separated by bands of clay slate, providing about 70% crushing stone and the rest waste. (*Mine Inspector's Reports*)





General view of the Sleeps Hill quarries looking south.
From top to bottom quarries D, G, and L1



General view of the Sleeps Hill quarries looking south.
From top to bottom quarries D, and L2



Quarry A



Quarry C



Quarry D



Quarry E



Quarry G



Quarry J



Quarry K



Quarry L1



Quarry L2

SLEEPS HILL QUARRIES - QUARRY A				
			Comments	Actions
Fencing and Signage				
Is quarry area fenced?	Yes			
Is fence in good repair?	Yes			
Is fence appropriate?		No	Needs fencing by fire track adjacent to walking trail	
Is quarry signed?	Yes			
Is signage appropriate?	Yes		Additional warning signs are required	
Description of Quarry				
Long narrow quarry				
Quarry Height 1. < 2.5m 2. 2.5m to 10m 3. 10m to 20m 4. > 20m	Rating			
	3			
Stability - Top 1. No loose material/Stable 2. Some loose material 3. Loose material 4. Loose material/Unstable	Rating			
	2			
Stability - Bottom 1. No loose material/Stable 2. Some loose material 3. Loose material 4. Loose material/Unstable	Rating			
	3			
		Some loose material at base of quarry		
Gradient 1. Gentle gradient/Walkable 2. Slightly steeper/Un-walkable 3. Sheer 4. Overhanging	Rating			
	3			
Proximity to houses 1. Isolated 2. Aware of housing 3. Visible 4. Abutting	Rating			
	1			
Public Accessibility 1. Isolated no access 2. Accessible with difficulty 3. Accessible walking trails 4. Readily accessible defined roads/tracks	Rating			
	3			
Current Use 1. No sign of use 2. Minor use 3. Occasional use 4. Frequently used regular trails	Rating			
	3			
		Minor tracks in quarry indicate area is being used by some one		

SLEEPS HILL QUARRIES - QUARRY A

			Comments	
Emergency (Recovery) 1. Defined Road 2. Vehicle access 3. Defined walking trail 4. Trail steep, care required 5. No trail	Access	Rating		
Historic significance 1. None 2. Minimal value 3. Significant 4. Highly significant		Rating		
			As part of the Sleeps hill Quarries group Local heritage	
Geological significance 1. None 2. Minor 3. Interesting feature 4. Significant feature		Rating		
			Weathering blue stone S/W side of quarry limestone area prominent Ripple rock on east side of interest	
Vegetation 1. Total exotic 2. Some native vegetation 3. Interesting feature 4. Good native vegetation		Rating		
			2	Some native Eucalypts competing with the Olives in this area
Fire Risk 1. No risk 2. Slight fire risk 3. Accessible in case of fire 4. Fire trap		Rating		
			4	Minimal access high fuel loading make area a fire trap and potential hazard
Visitation public access 1. None 2. Limited access 3. Moderate access 4. Good access		Rating		
			3	
Visitor 1. None 2. Minor 3. Potential 4. Good potential		Rating		
			4	
Potential Recreational Use 1. None 2. Slight 3. Moderate 4. Good		Rating		
			4	
Comments (Rubbish, erosion, etc)				
Shale on top of quarry erosion concern Top surface appears to be unstable, Fencing near walking trails required especially top area Bushwalking important recreational pursuit be aware of the trails near qaurries.0				

SLEEPS HILL - QUARRY C TO B

			Comments	Actions
Fencing and Signage				
Is quarry area fenced?		No		
Is fence in good repair?		No		
Is fence appropriate?	Yes		Fencing not required as with the other quarries as access to the area is limited	
Is quarry signed?	Yes			
Is signage appropriate?	Yes		The signage is not as detailed as other quarries further assessment required	
Description of Quarry Walk into the base of Quarry access to top limited due to location Points of interest are the incline railway line Limited access to the area with difficulty.				
Quarry Height 1. < 2.5m 2. 2.5m to 10m 3. 10m to 20m 4. > 20m	Rating			
	4	Sheer walls to quarry face		
Stability - Top 1. No loose material/Stable 2. Some loose material 3. Loose material 4. Loose material/Unstable	Rating			
	2			
Stability - Bottom 1. No loose material/Stable 2. Some loose material 3. Loose material 4. Loose material/Unstable	Rating			
	2	Old falls and slips obvious		
Gradient 1. Gentle gradient/Walkable 2. Slightly steeper/Un-walkable 3. Sheer 4. Overhanging	Rating			
	3	.		
Proximity to houses 1. Isolated 2. Aware of housing 3. Visible 4. Abutting	Rating			
	1			
Public Accessibility 1. Isolated no access 2. Accessible with difficulty 3. Accessible walking trails 4. Readily accessible defined roads/tracks	Rating			
	3			
Current Use 1. No sign of use 2. Minor use 3. Occasional use 4. Frequently used regular trails	Rating			
	4			

SLEEPS HILL - QUARRY C TO B

			Comments
Emergency (Recovery) 1. Defined Road 2. Vehicle access 3. Defined walking trail 4. Trail steep, care required 5. No trail	Access	Rating	
		2	There is a graded trail to the base of the quarry graded as a fire track yearly
Historic significance 1. None 2. Minimal value 3. Significant 4. Highly significant		Rating	
		3	As part of the sleeps Hill quarry area
Geological significance 1. None 2. Minor 3. Interesting feature 4. Significant feature		Rating	
		3	Blue stone fault line large blocks of stone obvious
Vegetation 1. Total exotic 2. Some native vegetation 3. Interesting feature 4. Good native vegetation		Rating	
		2	Mostly Olives at the base of quarry native vegetation in the area not affected by quarrying
Fire Risk 1. No risk 2. Slight fire risk 3. Accessible in case of fire 4. Fire trap		Rating	
		4	Long Narrow paths into reserve combined with flammable material leads to fire trap
Visitation public access 1. None 2. Limited access 3. Moderate access 4. Good access		Rating	
		3	
Visitor 1. None 2. Minor 3. Potential 4. Good potential		Rating	
		4	
Potential Recreational Use 1. None 2. Slight 3. Moderate 4. Good		Rating	
		3	
Comments (Rubbish, erosion, etc) Camp fires obvious in base of quarry area Rock face fretting and unstable			

SLEEPS HILL - QUARRY D

			Comments	Actions
Fencing and Signage				
Is quarry area fenced?		No		
Is fence in good repair?	Yes			
Is fence appropriate?	Yes		The quarry is only accessible from the top and is not situated close to track	
			There is a danger from the top area look at barriers and signs	
Is quarry signed?	Yes			
Is signage appropriate?	Yes			
Description of Quarry				
Large open quarry				
Quarry Height 1. < 2.5m 2. 2.5m to 10m 3. 10m to 20m 4. > 20m	Rating			
	4			
Stability - Top 1. No loose material/Stable 2. Some loose material 3. Loose material 4. Loose material/Unstable	Rating			
	2			
Stability - Bottom 1. No loose material/Stable 2. Some loose material 3. Loose material 4. Loose material/Unstable	Rating			
	3			
Gradient 1. Gentle gradient/Walkable 2. Slightly steeper/Un-walkable 3. Sheer 4. Overhanging	Rating			
	3			
Proximity to houses 1. Isolated 2. Aware of housing 3. Visible 4. Abutting	Rating			
	1			
Public Accessibility 1. Isolated no access 2. Accessible with difficulty 3. Accessible walking trails 4. Readily accessible defined roads/tracks	Rating			
	3			
Current Use 1. No sign of use 2. Minor use 3. Occasional use 4. Frequently used regular trails	Rating			
	3			

SLEEPS HILL - QUARRY D

			Comments
Emergency (Recovery) 1. Defined Road 2. Vehicle access 3. Defined walking trail 4. Trail steep, care required 5. No trail	Access	Rating	
		2	
		3	
Historic significance 1. None 2. Minimal value 3. Significant 4. Highly significant		Rating	
		3	
Geological significance 1. None 2. Minor 3. Interesting feature 4. Significant feature		Rating	
		4	
Vegetation 1. Total exotic 2. Some native vegetation 3. Interesting feature 4. Good native vegetation		Rating	
		2	Some native Eucalypts competing with the strong exotic weeds in the area including Pines, Briar, Bone seed and Olives
Fire Risk 1. No risk 2. Slight fire risk 3. Accessible in case of fire 4. Fire trap		Rating	
		4	
Visitation public access 1. None 2. Limited access 3. Moderate access 4. Good access		Rating	
		3	
Visitor 1. None 2. Minor 3. Potential 4. Good potential		Rating	
		3	
Potential Recreational Use 1. None 2. Slight 3. Moderate 4. Good		Rating	
		2	Walking trails an opportunity to link Brownhill creek with Randall Park reserve
Comments (Rubbish, erosion, etc)			
Steep inclines and sheer walls			

SLEEPS HILL - QUARRY E

			Comments	Actions
Fencing and Signage				
Is quarry area fenced?	Yes			
Is fence in good repair?	Yes		Minor repairs required to existing fence	
Is fence appropriate?	Yes		Needs to be extended	
Is quarry signed?	Yes			
Is signage appropriate?	Yes		Extra signage (International symbol type signs)	
Description of Quarry				
Steep drop N/W side of, quarry Large pit, steep rock faces both ends of quarry				
Quarry Height 1. < 2.5m 2. 2.5m to 10m 3. 10m to 20m 4. > 20m	Rating			
	4	Sheer walls to quarry face		
Stability - Top 1. No loose material/Stable 2. Some loose material 3. Loose material 4. Loose material/Unstable	Rating 1			
Stability - Bottom 1. No loose material/Stable 2. Some loose material 3. Loose material 4. Loose material/Unstable	Rating 2			
Gradient 1. Gentle gradient/Walkable 2. Slightly steeper/Un-walkable 3. Sheer 4. Overhanging	Rating 3			
Proximity to houses 1. Isolated 2. Aware of housing 3. Visible 4. Abutting	Rating 2			
Public Accessibility 1. Isolated no access 2. Accessible with difficulty 3. Accessible walking trails 4. Readily accessible defined roads/tracks	Rating 3			
Current Use 1. No sign of use 2. Minor use 3. Occasional use 4. Frequently used regular trails	Rating 4			

SLEEPS HILL - QUARRY E

			Comments
Emergency (Recovery) 1. Defined Road 2. Vehicle access 3. Defined walking trail 4. Trail steep, care required 5. No trail	Access	Rating	
		3	
Historic significance 1. None 2. Minimal value 3. Significant 4. Highly significant		Rating	
		3	
Geological significance 1. None 2. Minor 3. Interesting feature 4. Significant feature		Rating	
		3	
Vegetation 1. Total exotic 2. Some native vegetation 3. Interesting feature 4. Good native vegetation		Rating	
		4	Some pines and Olives at base of quarry
Fire Risk 1. No risk 2. Slight fire risk 3. Accessible in case of fire 4. Fire trap		Rating	
		2	
Visitation public access 1. None 2. Limited access 3. Moderate access 4. Good access		Rating	
		3	
Visitor 1. None 2. Minor 3. Potential 4. Good potential		Rating	
		4	
Potential Recreational Use 1. None 2. Slight 3. Moderate 4. Good		Rating	
		4	
Comments (Rubbish, erosion, etc)			
Some rubbish is evident in the base of the quarry.			

Sleeps hill Quarry G			Comments	Actions
Fencing and Signage				
Is quarry area fenced?	Yes			
Is fence in good repair?	Yes			
Is fence appropriate?	Yes		Some wires need to be re strung and attached to posts	
			Consider post and chain hand rail on the steep trail area at base of this quarry	
Is quarry signed?	Yes			
Is signage appropriate?	Yes		Sign at base of quarry needs repairs	
			Sign at top indicating stay behind fence and steep trail	
Description of Quarry				
Large quarry , special ripple rock feature of interest				
Trail on the eastern side of quarry very steep requires hand rails and signs indicating steep trail				
Quarry Height 1. < 2.5m 2. 2.5m to 10m 3. 10m to 20m 4. > 20m	Rating			
	4			
Stability - Top 1. No loose material/Stable 2. Some loose material 3. Loose material 4. Loose material/Unstable	Rating			
	3			
Stability - Bottom 1. No loose material/Stable 2. Some loose material 3. Loose material 4. Loose material/Unstable	Rating			
	2			
Gradient 1. Gentle gradient/Walkable 2. Slightly steeper/Un-walkable 3. Sheer 4. Overhanging	Rating			
	3			
Proximity to houses 1. Isolated 2. Aware of housing 3. Visible 4. Abutting	Rating			
	2			
Public Accessibility 1. Isolated no access 2. Accessible with difficulty 3. Accessible walking trails 4. Readily accessible defined roads/tracks	Rating			
	2	Very steep trail		
Current Use 1. No sign of use 2. Minor use 3. Occasional use 4. Frequently used regular trails	Rating			
	3			

			Comments
Emergency Access 1. Defined Road 2. Vehicle access 3. Defined walking trail 4. Trail steep, care required 5. No trail	Rating	4	
			Steep trail care required
Historic significance 1. None 2. Minimal value 3. Significant 4. Highly significant	Rating	4	
Geological significance 1. None 2. Minor 3. Interesting feature 4. Significant feature	Rating	4	
			Ripple rock wall significant feature in this quarry
Vegetation 1. Total exotic 2. Some native vegetation 3. Interesting feature 4. Good native vegetation	Rating	2	
			Olives and Lavender present in base of quarry, Sheoak and Eucalypts also regenerating
Fire Risk 1. No risk 2. Slight fire risk 3. Accessible in case of fire 4. Fire trap	Rating	4	
			Minimal access increases potential danger in this quarry
Visitation public access 1. None 2. Limited access 3. Moderate access 4. Good access	Rating	3	
Visitor 1. None 2. Minor 3. Potential 4. Good potential	Rating	4	
Potential Recreational Use 1. None 2. Slight 3. Moderate 4. Good	Rating	4	
Comments (Rubbish, erosion, etc) Great geological features, trail needs some work to make safe Hand carts from early quarrying have been left behind and are of some interest			

SLEEPS HILL - QUARRY H

			Comments	Actions
Fencing and Signage				
Is quarry area fenced?	Yes			
Is fence in good repair?	Yes		Repairs to fence required	
Is fence appropriate?		No	Should be extended along the walking track barrir by look out to be included	
Is quarry signed?	Yes			
Is signage appropriate?	Yes	✓	Stay behind fence	
Description of Quarry				
Quarry Height	Rating			
1. < 2.5m				
2. 2.5m to 10m	2			
3. 10m to 20m				
4. > 20m				
Stability - Top	Rating			
1. No loose material/Stable				
2. Some loose material	2			
3. Loose material				
4. Loose material/Unstable				
Stability - Bottom	Rating			
1. No loose material/Stable				
2. Some loose material	2			
3. Loose material				
4. Loose material/Unstable				
Gradient	Rating			
1. Gentle gradient/Walkable				
2. Slightly steeper/Un-walkable	2			
3. Sheer				
4. Overhanging				
Proximity to houses	Rating			
1. Isolated	1			
2. Aware of housing				
3. Visible				
4. Abutting				
Public Accessibility	Rating			
1. Isolated no access				
2. Accessible with difficulty				
3. Accessible walking trails	3			
4. Readily accessible defined roads/tracks				
Current Use	Rating			
1. No sign of use				
2. Minor use				
3. Occasional use				
4. Frequently used regular trails	4		Walking trail	

SLEEPS HILL - QAURRY H

			Comments
Emergency (Recovery) 1. Defined Road 2. Vehicle access 3. Defined walking trail 4. Trail steep, care required 5. No trail	Access	Rating	
		3	
Historic significance 1. None 2. Minimal value 3. Significant 4. Highly significant		Rating	
		3	As part of the sleeps hill quarries
Geological significance 1. None 2. Minor 3. Interesting feature 4. Significant feature		Rating	
		2	
Vegetation 1. Total exotic 2. Some native vegetation 3. Interesting feature 4. Good native vegetation		Rating	
		4	
Fire Risk 1. No risk 2. Slight fire risk 3. Accessible in case of fire 4. Fire trap		Rating	
		3	
Visitation public access 1. None 2. Limited access 3. Moderate access 4. Good access		Rating	
		4	
Visitor 1. None 2. Minor 3. Potential 4. Good potential		Rating	
		4	
Potential Recreational Use 1. None 2. Slight 3. Moderate 4. Good		Rating	
Comments (Rubbish, erosion, etc)			
Extend fencing along graded fire track and also look at bush walking trail in close proximity to quarry may need fencing or at least a sign.			

SLEEPS HILL QUARRY J

			Comments	Actions
Fencing and Signage				
Is quarry area fenced?	Yes			
Is fence in good repair?	Yes			
Is fence appropriate?	Yes		Needs work on fence to repair stretched wires and re tie wires to post	
Is quarry signed?	Yes			Quarry to be signed as soon as possible
Is signage appropriate?	Yes		Signs in need of repair and replacement	
Description of Quarry				
Long gully steep sides				
Quarry Height 1. < 2.5m 2. 2.5m to 10m 3. 10m to 20m 4. > 20m	Rating			
	4	Sheer walls to quarry face		
Stability - Top 1. No loose material/Stable 2. Some loose material 3. Loose material 4. Loose material/Unstable	Rating			
	2	West side appears to be more stable than east side on the east side cracks in large rocks		
Stability - Bottom 1. No loose material/Stable 2. Some loose material 3. Loose material 4. Loose material/Unstable	Rating			
	3			
Gradient 1. Gentle gradient/Walkable 2. Slightly steeper/Un-walkable 3. Sheer 4. Overhanging	Rating			
	3	Overhang on the east side		
Proximity to houses 1. Isolated 2. Aware of housing 3. Visible 4. Abutting	Rating			
	1			
Public Accessibility 1. Isolated no access 2. Accessible with difficulty 3. Accessible walking trails 4. Readily accessible defined roads/tracks	Rating			
	3			
Current Use 1. No sign of use 2. Minor use 3. Occasional use 4. Frequently used regular trails	Rating			
	4			

SLEEPS HILL QUARRY J

			Comments
Emergency (Recovery) 1. Defined Road 2. Vehicle access 3. Defined walking trail 4. Trail steep, care required 5. No trail	Access	Rating 3	
Historic significance 1. None 2. Minimal value 3. Significant 4. Highly significant		Rating 3	
Geological significance 1. None 2. Minor 3. Interesting feature 4. Significant feature		Rating 4	
Vegetation 1. Total exotic 2. Some native vegetation 3. Interesting feature 4. Good native vegetation		Rating 2	
			Bone seed and Olives in the base of the quarry
Fire Risk 1. No risk 2. Slight fire risk 3. Accessible in case of fire 4. Fire trap		Rating 3	
Visitation public access 1. None 2. Limited access 3. Moderate access 4. Good access		Rating 3	
Visitor 1. None 2. Minor 3. Potential 4. Good potential		Rating 4	
Potential Recreational Use 1. None 2. Slight 3. Moderate 4. Good		Rating 3	
			Some abseiling evident over high cliff
Comments (Rubbish, erosion, etc)			
There is an old tank at the base of quarry that should be removed			

SLEEPS HILL QUARRY K

			Comments	Actions
Fencing and Signage				
Is quarry area fenced?	Yes			
Is fence in good repair?	Yes		Needs some work to restring some of the wires and tighten	
Is fence appropriate?		No	Needs to be extended	
Is quarry signed?	Yes			
Is signage appropriate?	Yes			
Description of Quarry				
Quarry where fire track enters of Mead street				
Large open area in base of quarry suitable for picnic ground				
There is some concern over erosion problems with water directed from Mead street over quarry area				
Quarry Height	Rating			
1. < 2.5m				
2. 2.5m to 10m				
3. 10m to 20m	3			
4. > 20m				
Stability - Top	Rating			
1. No loose material/Stable				
2. Some loose material	2		Erosion by water is of a concern affecting the quarry top area	
3. Loose material				
4. Loose material/Unstable				
Stability - Bottom	Rating			
1. No loose material/Stable				
2. Some loose material	2			
3. Loose material				
4. Loose material/Unstable				
Gradient	Rating			
1. Gentle gradient/Walkable				
2. Slightly steeper/Un-walkable				
3. Sheer	3			
4. Overhanging				
Proximity to houses	Rating			
1. Isolated				
2. Aware of housing				
3. Visible				
4. Abutting	4			
Public Accessibility	Rating			
1. Isolated no access				
2. Accessible with difficulty				
3. Accessible walking trails	3			
4. Readily accessible defined roads/tracks				
Current Use	Rating			
1. No sign of use				
2. Minor use				
3. Occasional use	3			
4. Frequently used regular trails				

SLEEPS HILL QUARRY K

			Comments
Emergency (Recovery) 1. Defined Road 2. Vehicle access 3. Defined walking trail 4. Trail steep, care required 5. No trail	Access	Rating	
		1	Mead street close by defined fire access track
Historic significance 1. None 2. Minimal value 3. Significant 4. Highly significant		Rating	
		3	
Geological significance 1. None 2. Minor 3. Interesting feature 4. Significant feature		Rating	
		4	
Vegetation 1. Total exotic 2. Some native vegetation 3. Interesting feature 4. Good native vegetation		Rating	
		2	Good native vegetation at the top of quarry , base area exotic vegetation starting to grow
Fire Risk 1. No risk 2. Slight fire risk 3. Accessible in case of fire 4. Fire trap		Rating	
		3	
Visitation public access 1. None 2. Limited access 3. Moderate access 4. Good access		Rating	
		3	
Visitor 1. None 2. Minor 3. Potential 4. Good potential		Rating	
		3	
Potential Recreational Use 1. None 2. Slight 3. Moderate 4. Good		Rating	
		4	
Comments (Rubbish, erosion, etc)			
Erosion control is important, access to the area is also important great views across Mitcham, Signs indicating revegetation works under way Look at the potential for developing a picnic spot.			

SLEEPS HILL QUARRY L1

			Comments	Actions
Fencing and Signage				
Is quarry area fenced?	Yes			
Is fence in good repair?	Yes		Some minor repairs to fencing required wire restrung and tension	
Is fence appropriate?	Yes			
Is quarry signed?	Yes			
Is signage appropriate?	Yes			
Description of Quarry				
Narrow Quarry on the Mead street side of the reserve steep sides Some ripple rock obvious on wall				
Quarry Height	Rating			
1. < 2.5m				
2. 2.5m to 10m				
3. 10m to 20m				
4. > 20m	4			
Stability - Top	Rating			
1. No loose material/Stable				
2. Some loose material	2			
3. Loose material				
4. Loose material/Unstable				
Stability - Bottom	Rating			
1. No loose material/Stable				
2. Some loose material	2			
3. Loose material				
4. Loose material/Unstable				
Gradient	Rating			
1. Gentle gradient/Walkable				
2. Slightly steeper/Un-walkable				
3. Sheer	3			
4. Overhanging				
Proximity to houses	Rating			
1. Isolated				
2. Aware of housing				
3. Visible	3			
4. Abutting				
Public Accessibility	Rating			
1. Isolated no access				
2. Accessible with difficulty				
3. Accessible walking trails	3			
4. Readily accessible defined roads/tracks				
Current Use	Rating			
1. No sign of use				
2. Minor use				
3. Occasional use	3			
4. Frequently used regular trails				

SLEEPS HILL QUARRY L1

			Comments
Emergency (Recovery) 1. Defined Road 2. Vehicle access 3. Defined walking trail 4. Trail steep, care required 5. No trail	Access	Rating	
		3	Approx 50 metre to Mead street a made road
Historic significance 1. None 2. Minimal value 3. Significant 4. Highly significant		Rating	
		3	As part of the Sleeps Hill quarry area
Geological significance 1. None 2. Minor 3. Interesting feature 4. Significant feature		Rating	
		3	Ripple wall interesting
Vegetation 1. Total exotic 2. Some native vegetation 3. Interesting feature 4. Good native vegetation		Rating	
		3	
Fire Risk 1. No risk 2. Slight fire risk 3. Accessible in case of fire 4. Fire trap		Rating	
		3	
Visitation public access 1. None 2. Limited access 3. Moderate access 4. Good access		Rating	
		3	
Visitor 1. None 2. Minor 3. Potential 4. Good potential		Rating	
		4	
Potential Recreational Use 1. None 2. Slight 3. Moderate 4. Good		Rating	
		3	
Comments (Rubbish, erosion, etc)			
This quarry has been used as a dumping area with garden waste being dumped over the side of the quarry There is also a car body in the base of the quarry			

SLEEPS HILL QUARRY L2

			Comments	Actions
Fencing and Signage				
Is quarry area fenced?	Yes			
Is fence in good repair?		No	Fence requires some work new wire and restring the area	
Is fence appropriate?	Yes			
Is quarry signed?	Yes			
Is signage appropriate?	Yes			
Description of Quarry				
Horse shoe shaped Quarry along the Mead street road area				
Quarry Height 1. < 2.5m 2. 2.5m to 10m 3. 10m to 20m 4. > 20m	Rating			
	3 to 4	Some variation in height of quarry workings		
Stability - Top 1. No loose material/Stable 2. Some loose material 3. Loose material 4. Loose material/Unstable	Rating			
	2	Some loose material on top of quarry		
Stability - Bottom 1. No loose material/Stable 2. Some loose material 3. Loose material 4. Loose material/Unstable	Rating			
	2			
Gradient 1. Gentle gradient/Walkable 2. Slightly steeper/Un-walkable 3. Sheer 4. Overhanging	Rating			
	3			
Proximity to houses 1. Isolated 2. Aware of housing 3. Visible 4. Abutting	Rating			
	3			
Public Accessibility 1. Isolated no access 2. Accessible with difficulty 3. Accessible walking trails 4. Readily accessible defined roads/tracks	Rating			
	3	And also in close proximity to a made road		
Current Use 1. No sign of use 2. Minor use 3. Occasional use 4. Frequently used regular trails	Rating			
	3			

SLEEPS HILL QUARRY L2

			Comments
Emergency (Recovery) 1. Defined Road 2. Vehicle access 3. Defined walking trail 4. Trail steep, care required 5. No trail	Access	Rating	
		1	30 metres away is a made road Mead Street
Historic significance 1. None 2. Minimal value 3. Significant 4. Highly significant	Rating		
		3	
Geological significance 1. None 2. Minor 3. Interesting feature 4. Significant feature	Rating		
		4	Ripples in quarry
Vegetation 1. Total exotic 2. Some native vegetation 3. Interesting feature 4. Good native vegetation	Rating		
		2	Olives and other exotics in the bottom of quarry Natives on the top of the reserve
Fire Risk 1. No risk 2. Slight fire risk 3. Accessible in case of fire 4. Fire trap	Rating		
		2	
Visitation public access 1. None 2. Limited access 3. Moderate access 4. Good access	Rating		
		3	
Visitor 1. None 2. Minor 3. Potential 4. Good potential	Rating		
		3	
Potential Recreational Use 1. None 2. Slight 3. Moderate 4. Good	Rating		
		3	
Comments (Rubbish, erosion, etc)			

O'DEA'S QUARRY

O'DEA'S QUARRY (Section 1074)

This quarry was opened in 1846 and owned by John O'Dea. The quarry consisted of 2 acres. It appears John O'Dea operated the quarry from the 1870s. (*Mitcham Council Assmt. Bks*). In 1888, a licence to quarry stone expired of Section 1073 and was issued to J Young for L10 for the 2 acres (*Mitcham Council Assmt. Bks & Lands Dept. Application 25797*)

Later, the quarry was operated by Edward Mattingly who lived at Norwood and then by his son, Thomas who was born in 1885.

Situated at Springbank. (*Mit. Council Gen. Corrs. Box 4 Vol 16*)



O' DEA QUARRY - PYM STREET BELAIR

			Comments	Actions
Fencing and Signage				
Is quarry area fenced?	Yes	✓	No Fence obvious steep quarry face	
Is fence in good repair?	Yes	✓		
Is fence appropriate?	Yes	✓		
Is quarry signed?	Yes	✓	No signage on Quarry	Quarry to be signed as soon as possible
Is signage appropriate?	Yes	✓		
Description of Quarry Very large quarry adjacent to old railway tunnels There is a bike track leading to top edge of quarry no fencing Council reserve				
Quarry Height 1. < 2.5m 2. 2.5m to 10m 3. 10m to 20m 4. > 20m	Rating			
	4	Sheer walls to quarry face		
Stability - Top 1. No loose material/Stable 2. Some loose material 3. Loose material 4. Loose material/Unstable	Rating			
	2			
Stability - Bottom 1. No loose material/Stable 2. Some loose material 3. Loose material 4. Loose material/Unstable	Rating			
	2			
Gradient 1. Gentle gradient/Walkable 2. Slightly steeper/Un-walkable 3. Sheer 4. Overhanging	Rating			
	3			
Proximity to houses 1. Isolated 2. Aware of housing 3. Visible 4. Abutting	Rating			
	3			
Public Accessibility 1. Isolated no access 2. Accessible with difficulty 3. Accessible walking trails 4. Readily accessible defined roads/tracks	Rating			
	4	Base of quarry is a well defined road at the top of quarry there are several tracks leading to the edge of the quarry face		
Current Use 1. No sign of use 2. Minor use 3. Occasional use 4. Frequently used regular trails	Rating			
	3			

O' DEA QUARRY - PYM STREET BELAIR

			Comments
Emergency (Recovery) 1. Defined Road 2. Vehicle access 3. Defined walking trail 4. Trail steep, care required 5. No trail	Access	Rating	
		1	
Historic significance 1. None 2. Minimal value 3. Significant 4. Highly significant	Rating		
		3	
			O'Dea established quarry also leased to Young and Matteneety?
Geological significance 1. None 2. Minor 3. Interesting feature 4. Significant feature	Rating		
		3	
Vegetation 1. Total exotic 2. Some native vegetation 3. Interesting feature 4. Good native vegetation	Rating		
		2	Some Olives present in woodland area mainly grey box woodland plant association
Fire Risk 1. No risk 2. Slight fire risk 3. Accessible in case of fire 4. Fire trap	Rating		
		3	
Visitation public access 1. None 2. Limited access 3. Moderate access 4. Good access	Rating		
		2	
Visitor 1. None 2. Minor 3. Potential 4. Good potential	Rating		
		3	
Potential Recreational Use 1. None 2. Slight 3. Moderate 4. Good	Rating		
		2	
Comments (Rubbish, erosion, etc)			
Consider the Reserve on the S W side to be extremely dangerous. Good access and evidence of bike use would suggest that there is good access to the area. Sloping land to face of quarry, nothing to id edge of quarry and potential. Sins required as a minimum along with fencing			

BRICKWORKS PUG HOLE

WILLUNGA STREET BRICKWORKS PUG HOLE

When the railway was built across Mitcham on the way to Melbourne, bricks were needed for tunnel and housing construction. The shallow site at Willunga Street, Eden Hills near the kindergarten was part of a series of pug holes excavated for brick making. The main brick-makers were the Wade and Trott families who eventually were linked by marriage in 1883.



Willunga street quarry			Comments	Actions
Fencing and Signage				
Is quarry area fenced?	Yes			
Is fence in good repair?	Yes			
Is fence appropriate?	Yes			
Is quarry signed?	Yes			Quarry to be signed as soon as possible
Is signage appropriate?	Yes			
Description of Quarry				
<p>The small clay pit that is behind the Willunga street Kindy at Eden Hills.</p> <p>The quarry is mostly filled in leaving a slight depression with gently sloping areas.</p> <p>The walls of quarry are no more than 2 metres high .Area used as dumping ground</p>				
Quarry Height	Rating			
1. < 2.5m	1			
2. 2.5m to 10m				
3. 10m to 20m				
4. > 20m				
Stability - Top	Rating			
1. No loose material/Stable	1			
2. Some loose material				
3. Loose material				
4. Loose material/Unstable				
Stability - Bottom	Rating			
1. No loose material/Stable	1			
2. Some loose material				
3. Loose material				
4. Loose material/Unstable				
Gradient	Rating			
1. Gentle gradient/Walkable	1			
2. Slightly steeper/Un-walkable				
3. Sheer				
4. Overhanging				

Proximity to houses 1. Isolated 2. Aware of housing 3. Visible 4. Abutting	Rating 4		
Public Accessibility 1. Isolated no access 2. Accessible with difficulty 3. Accessible walking trails 4. Readily accessible defined roads/tracks	Rating 3		
Current Use 1. No sign of use 2. Minor use 3. Occasional use 4. Frequently used regular trails	Rating 1		
		Used as storage area by resident to the S E of quarry	

Comments			
Emergency Access (Recovery) 1. Defined Road 2. Vehicle access 3. Defined walking trail 4. Trail steep, care required 5. No trail	Rating		
Historic significance 1. None 2. Minimal value 3. Significant 4. Highly significant	Rating	Nothing of interest left	

Geological significance 1. None 2. Minor 3. Interesting feature 4. Significant feature	Rating 1	
Vegetation 1. Total exotic 2. Some native vegetation 3. Interesting feature 4. Good native vegetation	Rating 2	
		Some native Eucalypts competing with the strong exotic weeds in the area
Fire Risk 1. No risk 2. Slight fire risk 3. Accessible in case of fire 4. Fire trap	Rating 2	
Visitation public access 1. None 2. Limited access 3. Moderate access 4. Good access	Rating 1	
Visitor 1. None 2. Minor 3. Potential 4. Good potential	Rating	
Potential Recreational Use 1. None 2. Slight 3. Moderate 4. Good	Rating 1	
Comments (Rubbish, erosion, etc) Note the presence of the area small depression no obvious hazards present To be included on future list as a check only		

SHEOAK HILL QUARRIES

SHEOAK HILL QUARRIES (940, 1037, 567)

This form had several quarries situated at Sheoak Hill about 2 or 3 miles east of the Belair Railway Station. A large amount of the best freestone was taken from these quarries and most of the houses in Malvern, Unley, Kingswood and Hawthorn were built of this stone. It was said that over time the stone became too hard and that the stone cutters would not work with it. Softer stone was sought further east from Mt Lofty in the Stirling district. (*Royce Wells 1995*)

Council gave Stone, Creek and Huish the right to put a cutting through a Council Road for which they paid 1/- per ton royalty, and many hundred of pounds were received. WA Rayner and Edwin Fooks also had a quarry contract similar to these. (*Mit. Council Gen. Corrs. Box 4 Vol 16*)

In 1879 John Brook leased the stone and quarry rights from Henry Foster for ten years. (*CT 149/53*)

1896 Jan. 14

Clerk reported he had gone over both with Mr Fooks and Mr Sanders. A fence has been put across near the quarry fencing that out from the National Park and enclosing the remaining portion within the National park. A Foster also wrote asking extension of time to allow him to remove wood off SheaOak Hill Reserve. Proposed by Cr Mills that H. Fookes offer of œ1 per annum for grass in the quarry land occupied by him be accepted. - carried.

Proposed that A Foster's application for extension of time be granted - Carried. The Commissioners of the National Park offered œ2 per annum for rights of grass and timber on that portion of the reserve not included in Fookes lease, Fookes under no pretence to cut the fence or have access to the remaining portion of the reserve. It was proposed by Cr Mills that the offer of the Commissioner be accepted.

1899 March 7

Messrs J Creek and J Huish wrote applying for portion of SheaOak Hill Road for Quarry purposes and offering 6d per cyd royalty for good building stone. It was decided to inspect this on 16th inst. also to inspect road between Belair and the Hill, culverts and bridges Davis Hill, and Fence, (Davis) Bull's Creek Road.

1899 July 3

Letter from Messrs Temme & Lugg asking that as they could not make the Sheaoak Hill Quarry pay they might be allowed to discontinue leasing the same. Proposed that the matter stand over till next meeting and in the meantime that the lessees be asked by remit all rents due.

Aug. 7 - Messrs Temme & Lugg here waited on the Council re their application to be allowed to throw up their lease of Sheaoak Hill Quarry and paid one quarters rent. Proposed that Temme & Lugg be allowed to occupy the Quarry at a reduced rental of

œ50 per annum and that a new Agreement be prepared accordingly from October 1st 1900 for remainder of their original term.

Sept. 4 - A letter was received from Temme and Lugg accepting Council offer of reduction of rent of Sheaoak Hill Quarry for remainder of term of lease. Proposed that clerk inform Messrs Temme and Lugg that unless all arrears of rates and rent are paid before Sept. 30 that the rent will be charged as heretofore.

Oct. 2 - Resolved on the motion that post dated cheques paid by Temme & Lugg for rent and arrears of rates on Sheaoak Hill Quarry be accepted in payment, and if not honoured to forego all previous arrangements. – *Mitcham Council Minutes*

John Walter Creek and Emily Teresa Cullen had two children at Mitcham 1894 & 1898.

Alfred Stone married Annie Witheridge and had five children at Mitcham between 1892-1905.

Henry Fooks Born 1841 at Swanage Dorset England, stonemason lived at Prospect married Julie Stickland in 1865 and arrived in SA on the Golden Sea in 1876. Julie was born 1846 and died 1922 and Henry died in 1918 buried at West Tce. Cemetery. They had 12 children. (*Biographical Index 1986*).

Albert H Huish married Louise M Creek and had eight children between 1885 – 1900 at Mitcham. Louise's sister, Ruth married James Huish and they were two of seven children of Isaac and Ann Creek, all lived around Mitcham. (*SA Births Registrations 1942-1906*)

Albert & Louisa's son Leslie Thomas Huish, also worked in McElligott's Quarry as foreman. The Stone family were working the 20 foot high face in 1916. In 1923 it was reported that there was a very large quantity of the soft pale, buff-coloured sandstone, which hardened after being quarried. It was suitable for small buildings such as residential villas forming either the walls or base courses. Many private residences in and around Adelaide used it with dressing of red brick. By 1926 the site was abandoned in favour of a quarry at Upper Sturt. (*Record of Mines Summary Card & "Building Stones of SA" by R Lockhart Jack, 1923*)

Sheoak Road Borrow pits along road side			Comments	Actions
Fencing and Signage				
Is quarry area fenced?	Yes		Some fences installed mainly to keep cars out and to stop rubbish dumping	
Is fence in good repair?	Yes			
Is fence appropriate?	Yes			
Is quarry signed?	Yes			Quarry to be signed as soon as possible
Is signage appropriate?	Yes			
Description of Quarry Several small area alongside of Sheoak road from end of Bitumen for approx 1 km. Only small areas most not very deep. There are some area obvious within National parks area but seem to be fenced off				
Quarry Height 1. < 2.5m 2. 2.5m to 10m 3. 10m to 20m 4. > 20m	Rating			
Stability - Top 1. No loose material/Stable 2. Some loose material 3. Loose material 4. Loose material/Unstable	Rating			
Stability - Bottom 1. No loose material/Stable 2. Some loose material 3. Loose material 4. Loose material/Unstable	Rating			
Gradient 1. Gentle gradient/Walkable 2. Slightly steeper/Un-walkable 3. Sheer 4. Overhanging	Rating			
Proximity to houses 1. Isolated 2. Aware of housing 3. Visible 4. Abutting	Rating 1			
Public Accessibility 1. Isolated no access 2. Accessible with difficulty 3. Accessible walking trails 4. Readily accessible defined roads/tracks	Rating 2		Most area fenced of to stop motor traffic.	
Current Use 1. No sign of use 2. Minor use 3. Occasional use 4. Frequently used regular trails	Rating 1		Mainly dumping of rubbish 4 wheel drive use	

MITCHAM COUNCIL MINUTES RELATING TO THE QUARRY INDUSTRY

1895 Feb 5

The following tenders were received for 3 years lease of Quarry Brown Hill Creek.

R Moyse £11, Eli Smith £10

Resolved that Eli Smith tender be accepted taking into consideration the fact that he had done a good deal of clearing during his expired lease.

1895 April 2

George Mason as Inspector under Width of Tires Act attended and load several changes against three carters, he also checked the weight of the loads....

J Trenworth had load stone, Mason stopped him for weighting, proceeding towards Bridge, passing Townsend. Trenoweth said "my horse wants a shoe," went with horses and load to Townsends about 4pm had 2 shoes put on this took till 6pm. Trenoweth then said I am not going to

Unley Bridge tonight took his horses home, left load on road side at Townsends. Mason stopped with load till 7pm sent for clerk, clerk went down, Mason went to tea. Mason returned and waited with load till 10pm, then went home. Mason returned next am at 2.35 and found load gone. Clerk to obtain legal opinion and report next meeting.

1901 Oct 1

Resolved that Quarry proprietors be informed that Closet Accommodation be provided at Quarries.

1952 C – Complaints about

SOME QUARRYMEN

"Observer" 14 Jan 1928

John Sanders son of Samson Sanders who arrived in 1839 and established in the city, in Waymouth Street the first monumental works. John worked around Nairne and the Callington Smelting Works. He married Emma Mills of Hay Valley, Nairne who died in 1926. They had 11 children, 22 grandchildren and 14 great-grandchildren. Gordon Sanders and Mrs E Voit children lived at Cottonville.

Later worked at the Mitcham Quarries for about 11 years. It was all hand-drilling then and the quarrymen worked from 7am to 6pm for 6/- a day; and up to 4pm on Saturdays.

"I left the quarries", Mr Sanders went on, " and became coachman to Judge Andrews at Belair. He was a fine type of gentleman; but I got tired of the life and went back to the quarrying. While I was there the quarry was filled in by a landslide.

Four years he as driver on the Mitcham tramline then swerved off to Hyde Park where he occupied the post of working manager for the Tramway Company. He remained in the service for 18 years and until it was electrified; and then went into business as a dairyman.

SA Reg. 1 March 1892 p05

MITCHAM accident

Accidents at Mitcham - On Monday morning, February 29, Mr Samuel Rodda, while working in his quarry at Mitcham, met with an accident by which one of his robs was broken. Mr Rodda was trying to move a stone when the pick slipped off the handle and in getting clear of it he fell on some very sharp stones, thus causing the injury. Mr Rodda walked to Dr Gault, who ordered him to bed. Mr Charles Marks, of West Mitcham, was removed to the Hospital in the afternoon suffering from a server scalp wound. He was working in a well for Mr Bennett, when a bucket fell down, striking him on the head. At first it was feared that he had sustained concussion of the brain. On Sunday afternoon a young woman named McLean was thrown out of a trap near the Torrens Arms Hotel through an accident to the vehicle, and was ordered to the Hospital by Dr Gault. Besides being severely bruised she had a collarbone broken. All the patients are doing well.

COMPREHENSIVE LIST OF ALL THE QUARRIES OF MITCHAM

(Section numbers given for Hundred of Adelaide)

ADELAIDE QUARRIES (1148, 1073, 1074, 1080, 1147)

Opened in 1915 by Burt and Timms and in 1919 Adelaide quarries Ltd. was formed to work them on a large scale. Work ceased in the mid 1950's with a total production exceeding 7 million tons. 11 individual workings.
(Also see SA Railways)

ANDERSON'S QUARRIES (1140, 247E)

Opened by the Anderson family in 1849 and worked by them to 1951 and then by Quarry Industries Ltd to 1963. Produce huge amounts of building stone, quartzite, slate, sand from 2 huge faces on the hill and two smaller old ones in the valley, all still intact. Their first working was behind their house, now next to the EWS tank. (Royce Wells 1995)

Worked by Charles Anderson, and then Herbert Anderson his son, and subsequently Anderson's Quarry Co Ltd. which included Murray, Charles, Alf and Ernest, sons of Herbert Anderson. (Mit. Council Gen. Corres. Box 4 Vol 16)
The number of men employed averaged 8. The sandstone was crushed to sand while the quartzite was reduced to crushed stone. The slate was largely supplied for ballast only 743 tones being sold as building stone between 1930 and 1946. (Dept of Mines Summary Card, CSIR Bulletin No 190 - HS Cornelius, HA Stevens p23)

AYLIFFE'S QUARRY (12)

Opened in 1838 to supply stone for the Ayliffe family home, the quarry was operated by the family to 1917 supplying stone for building in Mitcham Marion and Brighton areas. J. Murray worked it in the 1920s supplying stone for buildings and road construction but work ceased in 1927. Four faces were worked, total production about 780,000 tons.

The destruction next by landfill of AYLIFFE'S QUARRY was also a disaster since it had played such an important role in the history of the Marion and adjacent South Road areas and it was a quarry rich in history. (Royce Wells 1995) FILLED IN & GONE

BEDDELL'S QUARRY (1140) later WOODS' QUARRY (extended into N43)

Opened in the 1890s by R Beddell producing stone for local use and some for the Outer Harbour breakwater. Woods' later took it up and then XL Quarries incorporated it into their holdings working it to about 1930.

BLYTHMAN'S QUARRY (1141)

The first stage of Mitcham Public School, (at 242 Belair Road, Lower Mitcham) was constructed of sandstone on a bluestone base. The stone used in the construction of the walls was an excellent quality, local product. It was obtained from a small quarry which became known as Blythman's Quarry but was probably operated by John Rayner at the time. The quarry, which has not been worked since the early 1900s is reported to have used a gravity-operated railway for moving the stone down the rock face. It was situated in a gully on the NE side of today's Windy Point and consequently, the stone had only to be carted a short distance down Bulls Creek Road (Belair Road) to the School site. According to the contract requirements the building was due for completion by 21 November 1879 but, in fact, was not completed until February, 1880. ("Mitcham School - 150 years of history: 1847-1997" by Charles Cornwall 1997.)

Richard Blythman operated this small quarry near Belair Road on Chaplin's land from the late 1890s to early this century.

BROWNHILL QUARRY (1094)

An early operation that supplied stone for early buildings on the farms of upper Brownhill Creek. A bed of high grade ceramic clay shale quarried from the main face was much prized by local brickmakers.

1894 August 7 - MITCHAM COUNCIL MINUTES

C.B. Hardy wrote stating H. Humphrey was desirous of opening quarry on Section 1094 but would require road across Brown Hill Creek Reserve he asked council to facilitate matters. ... Permission Granted (SAGG 21 March 1894 pgs 655,6)

Sept 4

Letter of thanks for facilities given by Council re quarry on Sec 1094 received from CB Hardy.

BROWNHILL CREEK QUARRY (Reserve C adjoining 1093)

Opened about 1870 and worked to about 1910 on a large scale supplying stone for many of the older buildings of Mitcham and some in Adelaide. Noted for its high grade freestone. Worked in succession by W. Rogers, JW King, SM Moyse and JR Priest.

BROWNHILL CREEK QUARRY

1895 February 5 - Mitcham Council Minutes

Clerk reported CLO had vested the Quarry in this council vide SAGG 24 Jan. 1895 pgs 131-2. Tenders have been called for lease....it was decided to allow 1000 cy to be removed per annum. Seven offers were made ranging from £45.12 0 to £101. The highest that of S & J Trenoweth was accepted.

1902 Aug. 4

1895 May 7 - Mitcham Council Minutes

Cr Anderson stated he had received information that Messrs S & J Trenoweth were allowing a large amount of waste to accumulate in their quarry. Clerk stated he had visited the quarry and found it so. He wrote to Messrs Trenoweth and S Trenoweth explained that as things were very busy in the quarry just now the rubbish would be cleared when things were slacker.

August 6

Clerk reported Trenoweth had not done anything towards cleaning quarry. He wrote stating he had received instructions to do so but could not owing to continued wet weather he also promised to see to it at once.

Sept. 3

Surveyor reported Messrs S & J Trenoweth had not removed the refuse from the Brown Hill Creek Quarry. Proposed by the Chairman that councillors interview Mr Trenoweth and inspect the quarry.

October 1

Councillors visited the Brown Hill Creek Quarry, Trenoweth's. The Quarry was not anything like as bad as has been represented. tho it is time it was being cleared. Trenoweth promised to attend to it. The clerk reported visiting the quarry again on 1st and the work of cleaning was commenced that day.
1895 February 5

Mitcham Council Records

Brown Hill Creek Metal Quarry 5 Nov 1906 occupied by J McElligott till 30 Nov 1911.

This eventually became a Council rubbish dump. (Mit. Council Gen. Corres. Box 4 Vol 16.)

"Mail" 3 Aug 1957

Due to the Springbank Dump closing, Brownhill Creek at the end of Fullarton Road was opened as a hard rubbish dump.

The first quarry to fall victim to the rubbish dumping was the BROWNHILL CREEK Reserve C QUARRY which was mostly filled in during the 1930s creating a major environmental problem in the process since the water run off caused massive pollution to Brownhill Creek below it whilst a plague of thousands of rats took over the dump so that the Council had to bring in shooters to gun them down. Fortunately, the upper face of this quarry remains so that a little of the sandstone bed can still be seen. This had been a very important buildings stone quarry. (Royce Wells 1995)

DYNON'S QUARRY (891)

Adjoining McElligott's Quarry, on the northern slopes of Brownhill Worked from late last century to early this century by James Dynon.

FULLER'S QUARRY (on or adjoining 1094)

South of and adjoining McElligott's, opened in the 1850s and after a period of inactivity reopened by FH Fuller who produced stone for the Outer Harbour breakwater from it.

"Chronicle" 18 March 1911

Shocking Fatality - Quarryman Killed.

A few minutes after work had begun at Fullers Quarry, Upper Mitcham on Wednesday morning Mr James Parkinson an elderly man was killed by a fall of rock. He was married and lived at West Terrace. According to an eye witness of the fatality Mr Parkinson left a dray he was loading and went to the side of the quarry with the object, it is thought of getting a fork. Directly above him at a height of 100 feet was a quarryman suspended by ropes working stones off the face with a crowbar. Not noticing Mr Parkinson below the quarryman loosened a large stone which crashed down on the head of the unfortunate man below. Workmen rushed to the scene, but their assistance did not avail, death having been instantaneous. Mr P's body was removed to the morgue the Coroner informed.

Owned by Frank Rymill. Large amounts of this stone was carted for the Outer Harbour. (Mit. Council Gen. Corrs. Box 4 Vol.16)

GAWLER'S QUARRY (884)

A one acre holding on Sugar Loaf Hill was taken up in the 1850s by H. Gawler who operated a building stone quarry here. In the 1860s it was incorporated into adjoining quarries.

HAYWARD'S QUARRY (1143)

Opened early this century but fully opened up into a major quarry when XL Quarries took it up in the 1920s. The face displays a great band of quartzite riding on a saddle of decomposed slate making it thus of great interest to geology students.

LOCAL GOVERNMENT QUARRY (1143)

A small quarry north of Hayward's Quarry close to the Old Belair Road was worked intermittently to supply stone for local road repairs.

MATTINGLY'S QUARRY (1073)

1874 quarry occupied & owned by J O'Dea, 2 acres (Mitcham Council Assmt. Bks)
1888 licence to quarry stone expired of Section 1073 and issued to J Young for L10 for the 2 acres (Mitcham Council Assmt. Bks & Lands Dept. Application 25797)

Situated at Springbank. (Mit. Council Gen. Corrs. Box 4 Vol 16)

Obs 10 Aug 1895 p29

Burning Accident - Shortly after 11am on Friday William Tait, aged 63, was admitted to the Adelaide Hospital suffering from severe burns. Lance-Corporal Bertrum states that the patient is a stone contractor, and was employed at the Springbank Quarries. He was sitting in front of the fire in his tent, when, it is surmised, he dropped asleep and fell on the coals. He has a wife living at Brompton.

McELLAGOTT'S QUARRY (1094, 248)

1864 Quarries owned by Wright valued at L15 (Mit. Assessment Books)

Opened in 1858 and worked continuously to 1934 it was one of the largest of the Mitcham Quarries and of great historical significance to the area. A large amount of stone for the Outer Harbour breakwater came from it plus building stone for the local area and large quantities of stone for road works throughout the Mitcham area and beyond.

Originally worked by John McElligott Sen. and then his sons, John Motimer and Michael carried it on. During this period a large quantity of stone was supplied for the Outer Harbour. Five horse trollies were used to transport the stone from the quarry to the railway station at Mitcham. There were no mechanical arrangements for lifting the stone. Finally John and Michael McElligott, sons of Michael Sen. worked it, but only for short period. - QUARTSITE
(Mit. Council Gen. Corrs. Box 4 Vol 16)

McELLAGOTT'S QUARRY

CT 530/134 ex 509/146

1889 June 04 - Charles Burton Hardy of Adelaide Gentleman Sections **921**, 50 acres; **1004** 83 acres; **1091** 46 acres; **1092** 48 acres; **Pt Section 1094** 243 acres; **Pt Section 1076** 107 acres **Pt Sections 891 & 892** 95 acres together **Plus** providing access to the Pipe Track.

1887 Jan 06 - Mortgage 210226 from CBH to Sir Wm Milner & Sam Tomkinson

1888 Sep 10 - Mortgage 223494 from CBH to John Charles Marshall Taylor of portion of the land.

1895 05 16 - Lease 292107 (including other property) from CBH to Benjamin Henry Andrews for 3 years from 1 march 1895.

1896 June 4 - Foreclosure order No 304041 dated 19 may 1896 in favour of JCMT of Roke Mannor near Romsey County of Hampshire England, Gentleman

1897 Sept 6 - Trans 320293 from JCMT to Annie Rymill wife of Frank Rymill of Adelaide Gentleman
Power of Attorney deposited

1908 July 20 - Lease 472971 (including other land) from Annie Rymill to Robert Symore of the within Section **1091** and **Pt Sections 1093 & 891** together with certain easements.

1909 Dec 30 - Portion of the **road** on the east of **Pt Section 1094** closed in SAGG 30 Dec. 1909. Tracing 799

1911 July 13 - Portion of Section 891 taken for a New Road SAGG 13 July 1911.

1922 May 23 - Trans 817391 from AR to Frederick Heaton Fuller, John McElligott & Mortimer McElligott of **Pt Section 1094**

New CT 1241/50, 51

CT 1241/50 ex Trans 817391

1922 June 28 – Frederick Heaton Fuller of Fullarton Estate, John McElligott and Mortimer McElligott both of Mitcham contractors **Pt Section 1094** of 8 acres, (Quarry)

1923 Sept 10 – Trans 864059 from Frederick HF to J McE & M McE

1926 Jan 04 – Death of Mortimer McElligott

1932 Oct 31 – Death of John McElligott

1933 Jan 13 – Trans 1146635 from Patrick Frances Kiley to Michael McElligott & John McElligott of Maitland Street Mitcham, Labourers as Tenants in common.

1933 May 23 – Mortgage 1152256 from M& J McE to the Bank of Adelaide till 8 June 1933.

1933 June 8 – 3 Mortgages to George Day, Ernest Saunders & Co Ltd discharged 1934 & Harris Scarfe Ltd.

1933 Dec 15 – Lease No 1161920 from J & M McE for 15 years to J & M McElligott Ltd surrenders 1936.

1934 Oct 15 – Mortgage 1176698 from J & M McE to Keith Fletcher Chapple. Discharged 1936.

New CT 1639/41

CT 1639/41 ex CT 1241/50

1935 March 07 – Michael & John McElligott as Tenants in Common Pt Section 1094 of 8 acres.

1935 Jan 24 – Trans 1182154 from KFC to Ernest Saunders & Co.

1936 March 18 – Trans 1208436 from M& J McE to Grassland Ltd of Commercial Bank Chambers King William St. Adelaide.

1948 Aug 24 – Change of Name No 1546646 from Grassland Ltd to Quarry Transport Ltd of 35 Grenfell St Adelaide SAGG 5 Feb 1948.

1953 April 21 – Mortgage 1776125 from Quarry Transport Ltd to the Bank of Adelaide

1958 00 14 – Trans 2043743 from Quarry Transport Ltd and the Bank of Adelaide as Mortgages to the Electricity Trust of SA of a right of way.

New CT 2906/181 & CT 2571/39 (ME Ragless Lands Dept. research)

Mitcham Council Correspondence Firms "Q" Letter 7

1934 December – From Quarries Ltd re weighbridge at McElligott's Quarry

This Company as you are aware has no doubt gone into liquidation and receiver is at present endeavouring to dispose of the stock of crushed metal which was on hand at the date of the liquidation of the company.

The second quarry, and the most historic to become victim to the rubbish dumping vandals was MacELLIGOTT'S.

It was one of the most historically significant, largest, and longest operated of all the Mitcham quarries and by the time dumping had ceased in the 1980s it had been almost totally destroyed, only a few, small, minor adjoining workings now remaining almost intact. (Royce Wells 1995)

Due to the Springbank Dump closing, Brownhill Creek at the end of Fullarton Road was opened as a hard rubbish dump. "Mail" 3 Aug 1957

MUNDY'S QUARRY (885)

Worked from the 1870s to the late 1900s it was an important building stone quarry.

Mitcham Council Records

Memorandum of Agreement between Council and Ellen Hermia Munday 1 July 1908 – 31 May 1929 SAGG 26 March 1903 & 16 July 1908 p 90. Lessee shall pay the council L15 in 2 instalments each year.

The Lessee shall destroy all noxious weeds growing on the land hereby demised during the term.

MORIARTY'S QUARRY (890?)

Worked from 1880s to early 1900s. A newly invented explosive called "Ripplene" had its first testing in this state at this quarry in 1893.

Operated by DH Munday who having found gold in the quarry floated a company in which some noted Adelaide business men invested, but no gold was every found. (Mitcham Gen. Corrs. Box 4 Vol.16)

PRINCE'S QUARRY (884)

Opened in the 1850s on Sugar Loaf Hill it supplied high quality stone for numerous buildings, bridges and houses through out the Mitcham area and at other settlements throughout the Adelaide area. J. Prince took it up in 1870 and worked it to the 1890s supplying stone for some of the major buildings erected in this period. It was last worked as part of the holdings of XL Quarries in the 1920s but was closed down by them in 1925 when the available stone became exhausted.

RAYNER'S ex TEMME?

Situated in John Fisher Drive, Lynton?

ROCKNESS HILL QUARRY (1140)

Opened by S Saunders about 1854 when his first quarry working was opened at the western side of the block and this produced stone for local building. Later he opened at larger quarry on the hill behind his house and orchard this up to his death in 1885. Various operators continued to work the quarry sporadically until Anderson brothers acquired the lease and worked it in conjunction with their adjoining quarries. Quarries Ltd purchased it after them but work was not continued by them.

RODGERS QUARRY (Reserve C1, adjoining 1093)

Opened in the 1860s W Rogers worked this important large freestone quarry from the 1884 to the early 1900s and several lesser operators for a short period after this. It was an important building stone deposit supplying stone for many houses in Mitcham and nearby suburban areas.

SAUNDERS QUARRY (247E)

Opened in 1854 by S Saunders and operated by him to 1883 when he sold it to J Prince after which it several times changed hands eventually being incorporated into the operations of the Anderson family but worked on it ceased in the 1930s. It contains outstanding geological features of enormous significance not to be found in any other quarries at Mitcham or any nearby areas.

SMITH'S QUARRY (247)

In 1868 J Smith opened this quarry to 1881 when his son Eli took it over. The quarry operated continuously to the late 1920s supplying stone mostly for roadworks.

1902 July 8 - Mitcham Council Minutes

The lease of Quarry occupied by Eli Smith expires on July 31 next it was resolved that Tenders be called for a three years lease of same.

Situated in Eli Street and the junction of Eli Street and Braemar Road. Eli Smith who lived next door to the quarry took William Tremelling into partnership. (Mit. Council General Correspondence Box 4 Vol 16)

SCOTT'S QUARRY (248)

Opened by CWH Fuller in the 1880s and worked only in a small way by him, Scott, Anderson, and other up to its closure in the early 1960s. Supplying building stone in its earlier years, its production this century was entirely of stone for road construction.

A man named Martinsen was killed in this quarry, he came through the fence from the Cemetery and fell over the quarry face, a drop of about 30 feet. (Mit. Council Gen. Corrs. Box 4 Vol 16)

Land Title Research by Pam Oborn
Lot 89 Mitcham Village Pt Sec 248
1839 Feb 12 - Land Grant to SA Co.
1840 Nov - Mitcham Village for sale
- Purchased by Rev Ralph Drummond
1858 Dec 7 - Brought under RPA CT2/167
1862 May 12 - 1863 etc Mortgaged for L80
1870 July 22 - Transferred from Drummond to George SCOTT CT 146/815 3 acres.

SCHWERKOLT'S QUARRY (1146, 1075)

In 1902 A Schwerkolt took up a group of existing quarries and worked them all on a large scale. These included
1/ The Harbour Quarry, opened by H Wilke & Co in 1870 that supplied the first stone for the Outer Harbour breakwater.
2/ The Crusher Quarry, also opened by Wilke in the 1870s
3/ Wilke and Johnston's Quarry, opened by them in 1879 and the largest operation here. Metal Quarries Ltd. took up the property in 1924, and Adelaide Quarries Ltd in 1920 and they operated the complex up to the late 1930s
Several fatal accidents occurred in this quarry. (Mit. Council Gen. Corrs. Box 4 Vol 16)

SCHWERKOLT'S QUARRIES - ACCIDENTS - SLEEPS HILL

You mentioned on your card about a fatality at this location in 1937 -38. There were a number of deaths in accidents there that I have fully documented, the 1932 one got the largest press coverage. Both of the 1930's ones occurred in the area of the photo you published in the newspaper, one at the left top, the other at the right bottom. In the latter, on the railway siding the incident has continued non stop ever since, well known as the most haunted spot probably in Mitcham, large numbers of people can testify to the haunted spot from personal experiences and many people in the area have seen the ghost. I not only have experienced the haunting just by non visible means but have seen the ghost a few times.

In the 1960's, first with mates in the Mitcham and Lynton areas and then with boys from my church groups, we would often hike up around there on hot summer nights and all of them experienced the haunting and testified to it, my two mates who lived in the area like me had seen the ghost many times. It was a shocking accident of course so there is little wonder that it continues to go on there.

The last night hike I did up there in about 1969 was with mate Peter Gaffney who lived opposite the Lynton Station near the Council yard gate. The haunting was still terrifying then as much as it was when I first encountered it in 1960 at which time I sought out Arthur Brown for an explanation and got the details of this horrific accident on the siding, go up there your self one night soon about 11p.m. and experience it.

ROYCE WELLS JANUARY 1996

One of the most beautiful quarry sites of the Mitcham area is the 2 part Schwerkolt's Quarry below Belair Road, a huge face visible all across the Adelaide Plains, and one that can inspire pages of geological examination. (Royce Wells 1995)

S.A. RAILWAYS QUARRY (261, 1147)

QUARRY Sec. 1147

1894 October 11

From J. Gardener offer to work quarry on road north of Sec 1147 at 3d per cubic yard, monthly. Accepted. (Mitcham Council Minutes)

Four quarries were opened here in 1901 by D & M. O'Neil and in 1909 the SA Railways acquired the lease operating on a large scale up to 1927 when the property passed to Adelaide Quarries Ltd. who continue operations up to the 1950s.

The SA RAILWAYS QUARRY at Lynton to which many social history tales have been collected was very significant to our local and railway history and had important geological features, particularly on the high eastern faces which were written up in a number of Department of Mines reports and were used by school geological groups until they were drowned by the rising tide of rubbish about 10 years ago. A very impressive quarry complex with faces up to 100 feet in vertical height, it had richly rejuvenated itself so that the whole complex by the 1960s resembled a great gorge in the Flinders Ranges entered through a narrow and steep cutting from the quarry floor down to the railway siding. The filling and obliteration of this quarry must for all time be considered as one of the great crimes of the Mitcham Council. (Royce Wells 1995)

The Adelaide Quarries complex near Sleep's Hill is the subject of a geological booklet published by the Department of Mines and Energy which brings to life the geological significance of all parts of each of the many and each totally unique faces in this complex of workings which are now incorporated into the most beautiful and interesting walking trail areas in Mitcham. The great 100 ft. face of the "D Quarry" is one of the most exciting natural rock faces anyone could wish to see in the Adelaide Hills. (Royce Wells 1995)

SHEOAK HILL QUARRIES (940 etc)

This form had several quarries situated at Sheoak Hill about 2 or 3 miles east of the Belair Railway Station. A large amount of the best freestone was taken from these quarries and most of the houses in Malvern, Unley, Kingswood and Hawthorn were built of this stone. It was said that it became too hard, and the stone cutters would not work it, so that they had to look around for softer stone which they got further east from Mt. Lofty in the Stirling district. (Royce Wells 1995)

1879 Sept 20 – Lease from Henry Foster to John Brook of all stone and quarries of stone upon or under the above Section 941 for 10 years.

1881 Dec 24 – Transferred from HF and Blyth brothers as Mortgagees and John Brook as Lessee to George Charles Hawker as Commissioner of Railways of portion of section 941.

New CT CCCLII/192 & 193 (Lands Dept CT 149/53 MER Research 1998)

Council gave Stone, Creek and Huish the right to put a cutting through a Council Road for which they paid 1/- per ton royalty, and many hundred of pounds were received.

WA Rayner and Edwin Fooks also had a quarry contract similar to these. (Mit. Council Gen. Corrs. Box 4 Vol 16)

1896 Jan. 14 – Mitcham Council Minutes

Clerk reported he had gone over both with Mr Fookes and Mr Sanders. A fence has been put across near the quarry fencing that out from the National Park and enclosing the remaining portion within the National park. A Foster also wrote asking extension of time to allow him to remove wood off Shea Oak Hill Reserve. Proposed by Cr Mills that H. Fookes offer of £1 per annum for grass in the quarry land occupied by him be accepted. - carried.

Proposed that A Fosters application for extension of time be granted - Carried. The Commissioners of the National Park offered £2 per annum for rights of grass and timber on that portion of the reserve not included in Fookes lease, Fookes under no pretence to cut the fence or have access to the remaining portion of the reserve. It was proposed by Cr Mills that the offer of the Commissioner be accepted.

1899 March 7 – Mitcham Council Minutes

Messrs J Creek and J Huish wrote applying for portion of Shea Oak Hill Road for Quarry purposes and offering 6d per cyd royalty for good building stone. It was decided to inspect this on 16th inst. also to inspect road between Belair and the Hill, culverts and bridges Davis Hill, and Fence, (Davis) Bull's Creek Road.

1899 July 3 – Mitcham Council Minutes

Letter from Messrs Temme & Lugg asking that as they could not make the Sheaoak Hill Quarry pay they might be allowed to discontinue leasing the same. Proposed that the matter stand over till next meeting and in the meantime that the lessees be asked by remit all rents due.

Aug. 7 – Messrs Temme & Lugg here waited on the Council re their application to be allowed to throw up their lease of Sheaoak Hill Quarry and paid one quarters rent. Proposed that Temme & Lugg be allowed to occupy the Quarry at a reduced rental of £50 per annum and that a new Agreement be prepared accordingly from October 1st 1900 for remainder of their original term.

Sept. 4 – A letter was received from Temme and Lugg accepting Council offer of reduction of rent of Sheaoak Hill Quarry for remainder of term of lease. Proposed that clerk inform Messrs Temme and Lugg that unless all arrears of rates and rent are paid before Sept. 30 that the rent will be charged as heretofore.

Oct. 2 – Resolved on the motion that post dated cheques paid by Temme & Lugg for rent and arrears of rates on Sheaoak Hill Quarry be accepted in payment, and if not honored to forego all previous arrangements.

SUGAR LOAF HILL QUARRIES (884)

This represents a collection of what were individual quarries originally, each operated by separate owners. Gradually leases were extended or amalgamated and finally the entire group became one single lease. The first quarries were opened here in the early 1850s and supplied high quality building stone. The Sugar Loaf Hill group include Gawler's Prince's, Frost and Watson's Bucholz's, Dunn's and District Council Quarries. Badman Brothers purchased the complete Sugar Loaf Hill quarries and various other nearby after World War I and operated them all as the XL Quarry. Work on the Sugar Loaf Hill group ceased in 1925 due to the depletion of cheaply accessible good quality stone.

Worked by Michael Dunn. A large amount of metal and screenings was taken from this hill.

(Mit. Council Gen. Corrs. Box 4 Vol 16)

First worked in 1861 when it was known as the Sugar loaf Quarry RR Trresn was the first owner. Later owners were Sir WW Hughes, & R Barr Smith. In the late 1920s 20 men were employed. Quarry Industries took it over and it closed in 1931. (Mit. Hist. Soc. MIT 1 QA 00001)

The Sugar Loaf Hill group of interconnecting quarries between the original and the present Old Belair Roads contain important historical links to local mansions plus very significant geological features especially in the high eastern face close to the present main road. Coupled with the historically link other XL Quarries on the other side of the gully with very different geological formations, this group form an excellent basis for another walking tour publication (especially with the ruins visible outside of the geological features). The magnificent spectacle of all the vines and creepers that dangle down over the faces and ridges of both Wood's and Hayward's quarries make them very attractive to people from all walks of life. (Royce Wells 1995)

WEST MITCHAM QUARRY (1141)

The quarry was opened about 1852 by Custance and Hinkly and operated by them to the late 1860s when John Rayner purchased the property and worked it for two years.

1864 John Rayner occupier & owner Quarry House & 24 acres valued at L30. Hinsley (?) owner pt of this section 29 1/2 acres valuded at L20 with Rayner occupying it. (Mit. Council Assessment Book)

Builder FW Temme after this and operated by him to 1902 and then by his family to 1937 when Edward Rayner purchased it but operations ceased soon after. This quarry was a very important building stone quarry supplying stone for many local and Adelaide buildings and churches including the Bethlehem Lutheran Church in Flinders Street, Adelaide and Wallman's Building in Pulteney Street, Adelaide as well as hundreds of houses. It also supplied huge quantities of street kerbing stone and road rubble. Total production is about 1 3/4 million tons.

In 1871 the quarry was taken over by Temme and Weil who started to thoroughly developed the property. A weigh-bridge was installed and the quarry became noted for the "headings and rubble stones of all shape" that were turned out. Stone from it was used for additions to the Bushmen's Club. (State Records? Newspaper Cuttings Vol 4)

1894 October 2 - Mitcham Council Minutes

from J & W Rayner asking permission to be allowed to

Quarry on land adjoining Freestone Quarry and offering 3d per cubic yard royalty. Granted payments to be made monthly.

A letter from Mr. Rayner, asking for a lease of a quarry on the Government reserve, and offering £19 per annum, payable quarterly in advance. It was agreed to issue to Mr. Rayner the lease requested on the usual terms. (Mitcham Council Minutes 8 December 1856)

WILKE'S QUARRY (1146)

Herman Wilke opened two quarries (Harbour and Crusher) in 1870 and worked them to 1882. In 1879 Thomas Johnstone and Wilke opened a large quarry north of them and in 1882 as partners all three quarries came under their joint ownership. The following year they were underleased to the Mitcham Railway Quarry Co. Ltd. but were resumed by the original owners in 1887. A Schwerkolt acquired them in 1902, Metal Quarries Co. in 1924, and Adelaide Quarries Ltd. in 1928. Work Ceased in the 1950s.

XL QUARRY (1093, 1140, 1143)

Badman Bros, after World War I acquired many old quarries south of and adjoining Old Belair Road and worked them erecting crushing plants firstly on the Old Belair Road, and later, in the gully to the south. The quarries they took up included all the Sugar Loaf Hill group, Beddell's (Wood's) and Haywards. In 1926 a new quarry face was opened by them between the latter two but interesting geological features not anticipated forced work to cease on it within the year. XL Quarries ceased operations in 1927.

Mitcham Council Rate

ASSESSMENT BOOKS 1854 - 1855

Grainger John, occ & Owner; Sec 1140 20 acres Pasture Land

Grainger John, occ & Owner; Sec 1140 60 acres Dwelling House

ASSESSMENT BOOKS 1856

Anderson Charles, occ; Anderson Saunders Owner; Sec 1140

ASSESSMENT BOOKS 1857

Anderson, occ & Owner; Sec 1140

ASSESSMENT BOOKS 1857 - 1859

Thornber R, occ & Owner; Sec 1140

ASSESSMENT BOOKS 1859 - 1860

Anderson, occ & Owner; Sec 1140 House

ASSESSMENT BOOKS 1860 - 1867

Anderson, occ & Owner; Sec 1140 44 acres House

ASSESSMENT BOOKS 1867 - 1869

Anderson, occ & Owner; Sec 1140 Quarry

ASSESSMENT BOOKS 1870 - 1872

Saunders, occ and Owner; Sec 1140 3 acres

ASSESSMENT BOOKS 1872 - 1873

Hughes, occ & Owner; Sec 1140 2 acres House

ASSESSMENT BOOKS 1873 - 1874

Anderson H occ; Anderson C owner; Sec 1140 Half acre House

Anderson occ & Owner; Sec 1140 27 acres House

Saunders S occ; Anderson C owner; Sec 1140 quarter acre House

Prince J occ; Anderson C owner; Sec 1140 3 acres Quarries

ASSESSMENT BOOKS 1875 - 1876

Saunders S occ & Owner; Sec 1140 50 acres House and Land

ASSESSMENT BOOKS 1876 - 1877

Saunders S occ & Owner; Sec 1140 57 acres House and Land

ASSESSMENT BOOKS 1877 - 1878

Saunders S occ & Owner; Sec 1140 57 acres House and Land

ASSESSMENT BOOKS 1878 - 1879

Golding T occ; Smith N Barr owner; Sec 1140 Reservoir Land

ASSESSMENT BOOKS 1881

Nootnagel H occ & Owner; Sec 1140 House and Land

ASSESSMENT BOOKS 1881 - 1882

Harotees M occ; Anderson C owner; Sec 1140 House and Shed

ASSESSMENT BOOKS 1883

Langwell R occ; Smith R B owner; Sec 1140 House
Saunders Sam, occ & Owner; Sec 1140 House and Quarry
Potter N occ; Saunders Sam owner; Sec 1140 House and Quarry
Wright M occ; Anderson C owner; Sec 1140 House and Sheds
Nakerman S occ; Anderson C owner; Sec 1140 House and Marble
Bargery occ; Anderson C owner; Sec 1140
Anderson occ; Meyre owner; Sec 1140 Quarry

ASSESSMENT BOOKS 1885

URQ Coy. occ; A Hall owner; Sec 1075 & 1146 150 acres

Temme FW occ & owner Sec 1141 40 acres Quarry Smithy etc.

Rayner John occ & Owner Sec 1141 15 acres

Eli Smith owner Sec 247 111 acres

Alex Macgeorge occ & owner Sec 247 25 acres Allots 112-116

Rundle & Co occ; John Prince owner Sec 247b 8 acres

Saunders James occ; S Saunders owner Sec 1140 & 247 60 acres Quarry, house land etc.

Anderson & Co occ & owner Sec. 1140

King Wm occ Smith RB owner Sec 1039

George Scott owner Sec 248 3ac

John Young occ; D O'Dea owner Sec 1073

John Brook occ & owner Sec 1037 10acres

A Hardy occ & Owner Sec 1079

Matters & Co occ; Turton owner Sec 1188 80 acres grass land & quarries

Mundy occ; J Copeland owner Sec 885

Roseveare W occ CB Hardy owner Sec 891

Moriarty occ Crown owner Quarry Lease A Brownhill Creek

Gamble EM	"	"	Lease B	"
-----------	---	---	---------	---

Rogers H	"	"	Lease C	"
----------	---	---	---------	---

Gamble EN	"	"	Lease D	"
-----------	---	---	---------	---

Mitcham Council Rate Assessments 1895

Fuller Charles, occ; H & F Rymill owner; Sec 1288 40 acres Glen Osmond

H Humphrey, occ; CB Hardy owner; Sec 1094 Mitcham

Rayner W, occ & Owner; Sec 1143 5ac Belair

Tremelling & Smith, occ; E Smith owner; Sec 111, West Mitcham

Trenoweth S occ; GP Doolette owner; Sec 1140 60acres

Blythman F & J occ; C Anderson owner Sec 1140 1/2ac

Moyse RT occ; W Gooch owner; Sect 923

BIBLIOGRAPHY

Unpublished Department Mines Reports

- 1/ RB 44/118; DM 1881/54; LG Nixon (21.2.57)
- 2/ Inspector of Mines Quarry Inspection Report :Book 1924-1927
- 3/ Quarry Reports DM 230/24 - DM 330/24

Published Department Mines Reports

- 1/ Adelaide Quarries Ltd (HS Cometus) (16.8.28)
- 2/ Geological Survey Bulletin 10
The Building Stones of SA (RL Jack) (1926)

Draft Management Plan for Recreation Parks of the Adelaide Foothills, (including Windy Point), 1985

Biographical Index of South Australians, J Statton, 1986

The Torrens Park Estate, K Preiss & P Oborn 1991

South Australian Births Registrations 1842-1906, H & G Soc. 1998

Newspapers

Adelaide Observer; SA Register, Advertiser

Verbal communication by Royce Wells with various former miners, quarrymen and elderly Mitcham residents 1953-1970.

Mitcham Council Minutes

Mitcham Council Correspondence

Mitcham Council Assessment Books

ACKNOWLEDGEMENTS

Working Party:

David Deer – City of Mitcham Horticultural Consultant
Mike Bell – City of Mitcham Health and Safety Officer
Maggy Ragless – City of Mitcham Community Historian
Virginia Fisher - City of Mitcham Clerical Officer

Roger Grund - Mitcham Open Space Advisory Committee Representative
David Wutke - Local Government Association Insurance Consultant
Greg Drew – SA Department of Natural Resources

Mark Edwards - Flinders University Eco-tourism Student
John Spurling – Flinders University Eco-tourism Student
Kimberly White - Year 12 Student on work experience

Royce Wells – SA Mine and Quarry Historian
