

# Open File Envelope

## No. 9863

**EL 2582**

**LAKE GILLES AREA**

### **SECOND PARTIAL SURRENDER: ANNUAL REPORTS FOR THE PERIOD 11/2/2001 TO 10/2/2003**

Submitted by  
Pondray Pty Ltd  
2003

© 8/9/2003

This report was supplied as part of the requirement to hold a mineral or petroleum exploration tenement in the State of South Australia.  
PIRSA accepts no responsibility for statements made, or conclusions drawn, in the report or for the quality of text or drawings.  
This report is subject to copyright. Apart from fair dealing for the purposes of study, research, criticism or review as permitted under the Copyright Act, no part may be reproduced without written permission of the Chief Executive of Primary Industries and Resources South Australia, GPO Box 1671, Adelaide, SA 5001.

**Enquiries:** Customer Services  
Ground Floor  
101 Grenfell Street, Adelaide 5000

Telephone: (08) 8463 3000  
Facsimile: (08) 8204 1880



**PRIMARY INDUSTRIES  
AND RESOURCES SA**

**VINTAGE EXPLORATION AND MINING PTY.LTD.**  
**(A.C.N. 099 756 082)**  
**63 KING WILLIAM ST. KENT TOWN. SA 5067**

August 29th., 2003.

Mineral Tenements, Mineral Resources,  
PIRSA  
GPO Box 1671  
ADELAIDE SA 5001

Attention: Junesse Martin

Re. ~~Partial~~ Surrender Report – EL2582

All existing exploration data within the relinquished portion of EL 2582 have been submitted to the Department, and in lieu of preparing a surrender report we agree to place those reports on open file. No data have been acquired in the relinquished portions in the past license year.

Yours truly,



Chris Anderson

Director.

Grid Reference: SI 53-04

## ***Lake Gilles***

### **EXPLORATION LICENCE 2582**

**TECHNICAL REPORT FOR THE PERIOD  
TO 10<sup>TH</sup> FEBRUARY 2002**

**PREPARED BY:  
C.G. Anderson**

**ADELAIDE  
August 2002.**

**PONDRAY PTY.LTD.  
ACN: 008 137 111**

**DISTRIBUTION  
PIRSA  
Pondray Pty Ltd**

## KEYWORDS

GAWLER CRATON

GAWLER RANGE VOLCANICS

HUTCHISON GROUP

UNO FAULT

COPPER

GOLD

LEAD

ZINC

WARTAKA

UNO

CALCRETE

## ***CONTENTS***

### **SUMMARY**

<b>1. INTRODUCTION</b>	<b>1</b>
<b>2. LOCATION AND ACCESS</b>	
<b>3. EXPLORATION DURING THE CURRENT TERM</b>	<b>2</b>
3.1 Lakeside Prospect Detailed Calcrete	
3.2 Lakeside Prospect Historical Gravity Survey	
<b>4. CONCLUSIONS AND RECOMMENDATIONS</b>	<b>3</b>

## ***LIST OF FIGURES***

Figure 1:	Lakeside Prospect Detailed Calcrete – Sample Locations	Scale 1: 10000
Figure 2:	Lakeside Prospect Detailed Calcrete – Gold	Scale 1: 10000
Figure 3:	Lakeside Prospect – Gravity Contours	Scale 1:10000

## Summary

Funding for proposed drilling of the Uno Prospect area was unfortunately withdrawn, after delays in confirming access to the drilling area. Renewed interest in the region for Fe-Oxide Cu-Au mineralisation, following the “Prominent Hill” discovery of Minotaur Resource Ltd., led to a re-appraisal of the “Lakeside” area of strong magnetic anomalism.

Review of calcrete geochemical sampling indicated a strong (single point) copper anomaly immediately east of the Lakeside aeromagnetic anomaly. In-fill calcrete sampling to 200 by 200 metres was carried out to confirm the copper value. Although no anomalous values of comparable level were returned, the area was shown to be anomalous in gold and weakly elevated in copper.

A search of historical exploration reports revealed an early gravity survey of the magnetic anomaly area, carried out by Mobil Energy Minerals in the early 1980s. Although original data are not available, contour presentations of their data indicated potential for a significant gravity anomaly in the vicinity of the magnetic and calcrete geochemical anomaly zone.

## **1.0 Introduction**

During the period of this report, exploration efforts have been directed towards assessing the potential within the license area for “Fe-Oxide Cu-Au” style mineralisation, associated with strong magnetic and/or gravity anomalies.

## **2.0 Location And Access**

The exploration license area is north-west of Iron Knob, on South Australia’s Eyre Peninsula, on the Port Augusta 1:250000 topographic sheet (SI 53-04). The area includes portions of Uno, Corunna, Siam and Wartaka pastoral leases, and joins the Lake Gilles Conservation Park to the south. Access to the northern portions of the license area is via the Uno homestead road, and station tracks provide access to most of the region. Cross-country access in 4WD vehicles is possible over most of the area, removed from the margins of Lake Gilles itself, without any significant environmental impact.

## **3.0 Exploration During The Current Term**

Exploration activity during the current report period consisted of:

- Review of detailed geochemical data in the vicinity of the “Lakeside” aeromagnetic anomaly.
- Infill calcrete sampling of an indicated copper anomaly.
- Review of historical gravity surveying.

### **3.1 Geochemistry – Lakeside Prospect**

The “Lakeside” prospect area is defined by a linear NS oriented aeromagnetic anomaly, on the north-eastern corner of Lake Gilles. A single Reverse Circulation drillhole was completed by Normandy Mining Ltd. (Hole SH01 -Burton, 1995) on the magnetic feature, intersecting moderately magnetic “Banded Iron Formation”, weakly anomalous in gold but otherwise un-mineralised. Review of regional calcrete geochemical data indicated a single point anomaly in copper geochemistry, to the south-east of the Normandy drill hole. A small program of in-fill calcrete sampling was carried out to investigate this anomalous result – sample locations for 200 x 200 metre points are included in Figure 1, and assay results in Appendix A. Although the infill samples did not return copper values to the level of the original sample, a broad zone of anomalous copper and gold was outlined. Gold values for the infill samples are shown relative to the magnetic anomaly in Figure 2.

### **3.2 Gravity Coverage - Lakeside Prospect**

A search of historical exploration data for the Lakeside prospect area recovered contoured gravity values for four reconnaissance traverses carried out by Mobil Energy Ltd. Figure 3 includes the gravity contours as digitised from Mobil Energy’s presentation, imposed on the aeromagnetics.

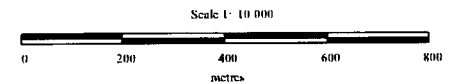
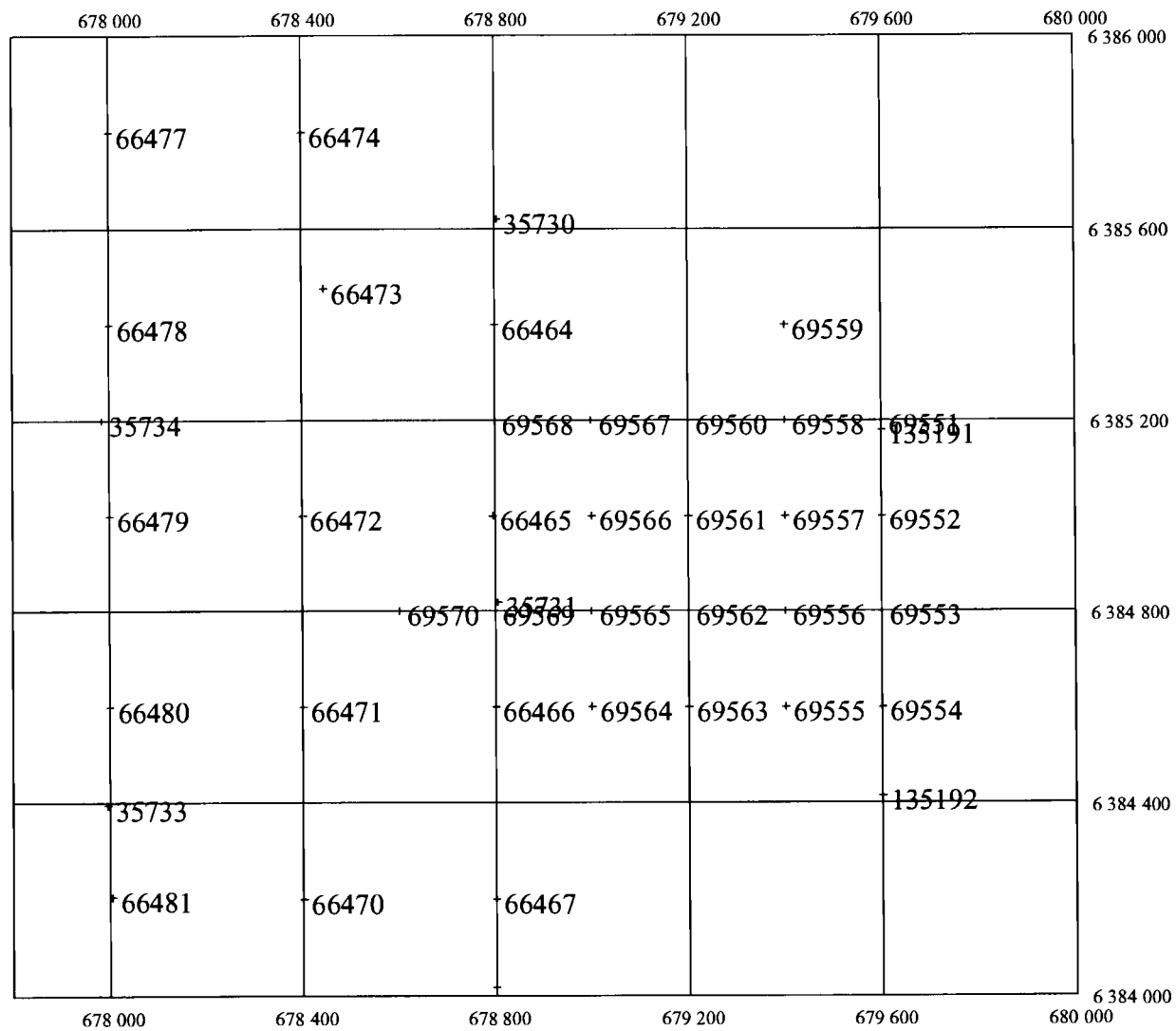


#### **4.0 CONCLUSIONS AND RECOMMENDATIONS**

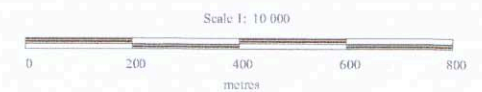
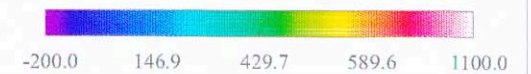
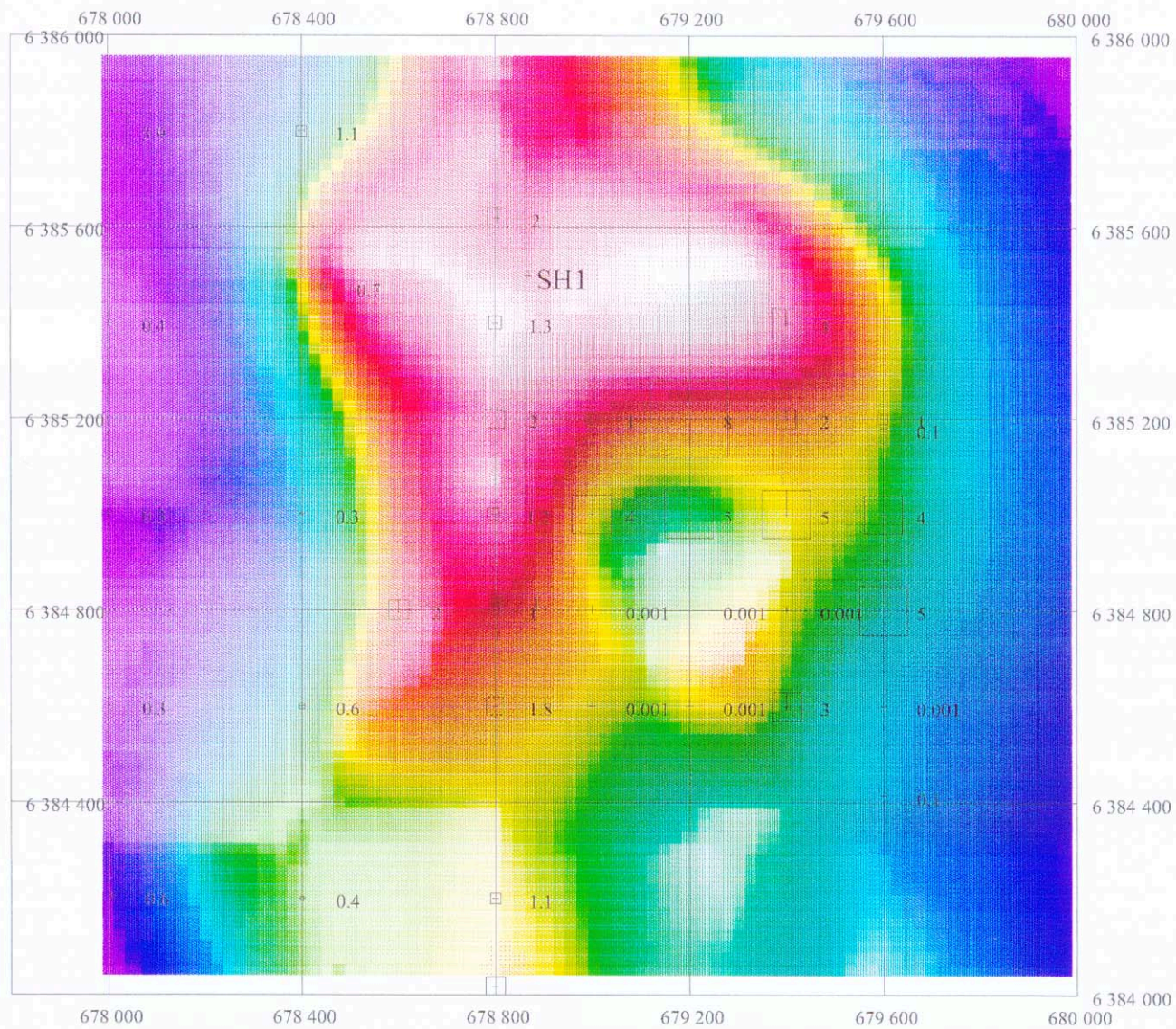
The “Lakeside” aeromagnetic anomaly has been shown to coincide with weakly anomalous copper and gold geochemical anomalism, and a significant gravity anomaly, and is regarded as a priority target for Fe-oxide Cu-Au style mineralisation. Drilling of this and the “Uno” gold anomaly remain a priority for an in-coming Joint Venture party.

#### **REFERENCE**

Burton,P.E., 1995. “Lake Gilles Project EL 1892” Progress Report for Normandy Exploration Ltd.



PONDRAY PTY LTD	
LAKE GILLES EL2582	
"LAKESIDE" PROSPECT	
CALCRETE SAMPLE LOCATIONS	
Author : anderson	Ref :
Drawn :	
Date : 2-Aug-2002	Report No :
Scale 1: 10 000	Plan No : FIGURE 1



PONDRAY PTY LTD

LAKE GILLES EL2582

"LAKESIDE" PROSPECT

CALCRETE GOLD VALUES ON TMI IMAGE  
AND DRILLHOLE LOCATION (SH1)

Author : anderson

Ref :

Drawn :

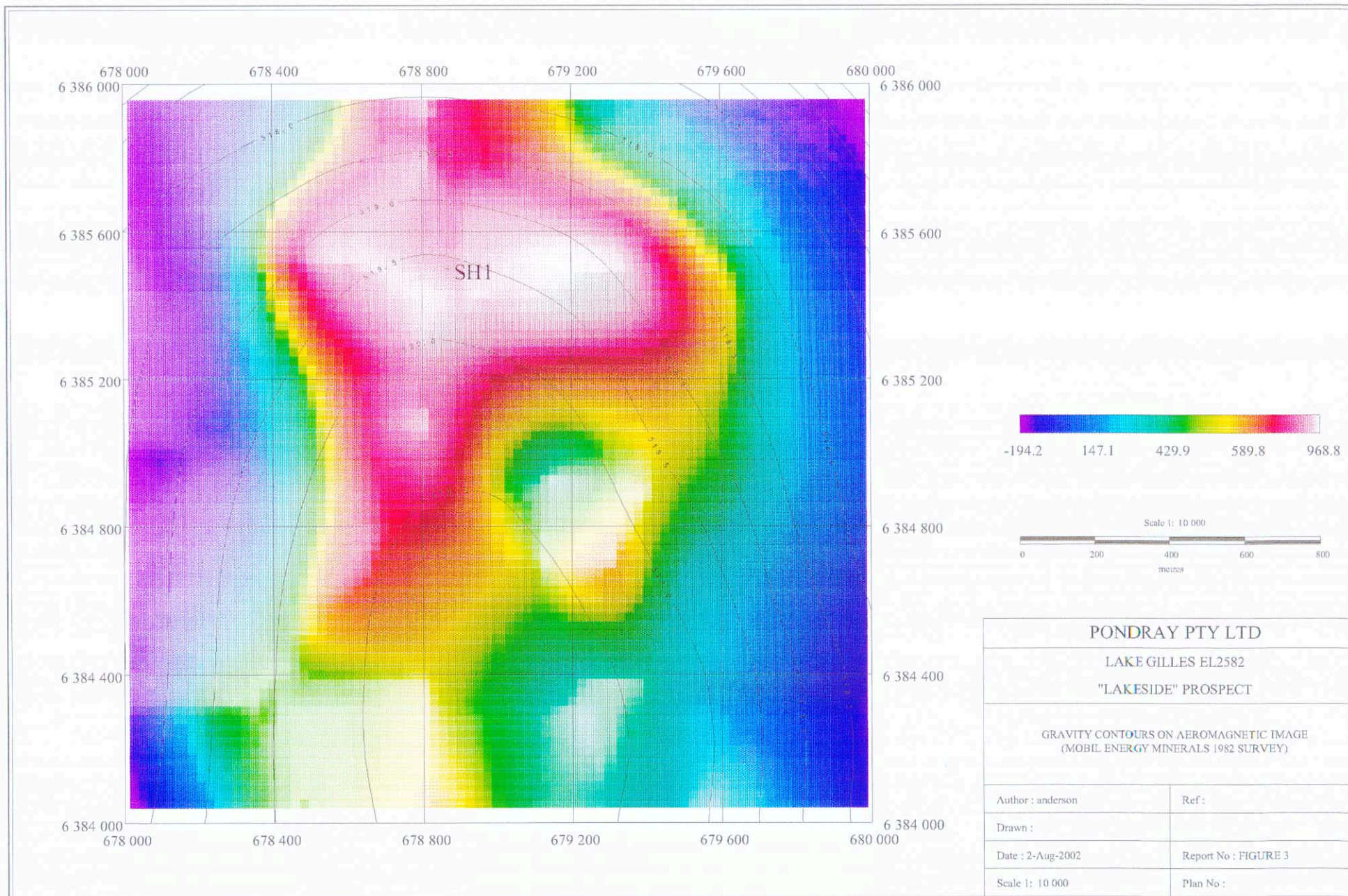
Date : 2-Aug-2002

Report No :

Scale 1: 10 000

Plan No : FIGURE 2





APPENDIX A  
LAKESIDE INFILL CALCRETE SAMPLING  
ASSAY RESULTS

SAMPLE	EAST	NORTH	Au(ppb)	Ag(ppm)	As(ppm)	Ca(%)	Au-Rp1
69551	679600	6385200	1 X		1.8	4.98	
69552	679600	6385000	4 X		2.8	9.68	5
69553	679600	6384800	5	0.01	2.4	4.81	
69554	679600	6384600 X		0.01	3.8	1.13	
69555	679400	6384600	3	0.04	1.4	1.11	
69556	679400	6384800 X		0.02	2.7	0.21	
69557	679400	6385000	5 X		6.7	13.35	
69558	679400	6385200	2 X		1.3	5.35	
69559	679400	6385400	3 X		15	8.98	
69560	679200	6385200	8 X		2.6	25.56	7
69561	679200	6385000	5	0.01	6.7	13.22	
69562	679200	6384800 X		0.02	2.3	0.66	
69563	679200	6384600 X		0.01	1.3	0.18	
69564	679000	6384600 X		0.02	13.1	11.84	
69565	679000	6384800 X		0.05	11.9	4.03	
69566	679000	6385000	4 X		3	24.51	
69567	679000	6385200	1 X		2.5	15.9	
69568	678800	6385200	2 X		3.1	16.11	
69569	678800	6384800	1 X		3.8	10.46	
69570	678600	6384800	2	0.01	4	6.33	

SAMPLE	EAST	NORTH	Co(ppm)	Cu(ppm)	Mo(ppm)	Pb(ppm)	U(ppm)
69551	679600	6385200	4.1	12 X		7	0.36
69552	679600	6385000	3.8	19	0.1	8	0.39
69553	679600	6384800	6.4	29	0.1	7	0.4
69554	679600	6384600	4	21	0.3	8	0.99
69555	679400	6384600	5.5	28 X		7	0.46
69556	679400	6384800	7.3	15	0.1	12	0.5
69557	679400	6385000	3.9	22	0.1	9	0.55
69558	679400	6385200	3	16 X		4	0.18
69559	679400	6385400	5.5	16	0.2	9	0.86
69560	679200	6385200	4.4	36 X		5	0.29
69561	679200	6385000	4.5	18	0.2	15	0.44
69562	679200	6384800	5.8	15	0.2	13	0.81
69563	679200	6384600	2.6	8 X		9	0.48
69564	679000	6384600	4.6	19	0.4	19	0.81
69565	679000	6384800	3.4	15	0.4	20	0.59
69566	679000	6385000	4.6	34 X		7	0.24
69567	679000	6385200	5.2	20 X		13	0.28
69568	678800	6385200	6.1	40 X		9	0.17
69569	678800	6384800	6.5	23	0.2	15	0.32
69570	678600	6384800	7.2	36 X		10	0.24

**VINTAGE EXPLORATION AND MINING PTY.LTD.**  
**(A.C.N. 099 756 082)**  
**63 KING WILLIAM ST. KENT TOWN. SA 5067**

August 28th., 2003.

Mineral Tenements, Mineral Resources  
PIRSA  
GPO Box 1671  
ADELAIDE SA 5001

Attention: Junesse Martin

Re: Annual Technical Report – EL2582  
For Year Ending February 10<sup>th</sup>, 2003.

Exploration activity within EL 2582 during the past license year have been limited to review of existing historical data, in an attempt to attract JV funding for drill testing of defined targets in the "Uno" "Lakeside" and "Scrub" anomaly areas. While we are still of the firm view that these are valid exploration targets, the response to numerous presentations of the project data have been negative, due to the prevailing market sentiment regarding "grass roots" exploration.

No field data were consequently acquired during the report period.

Yours truly,



Chris Anderson

Director.

MERFF

R2003/01352

