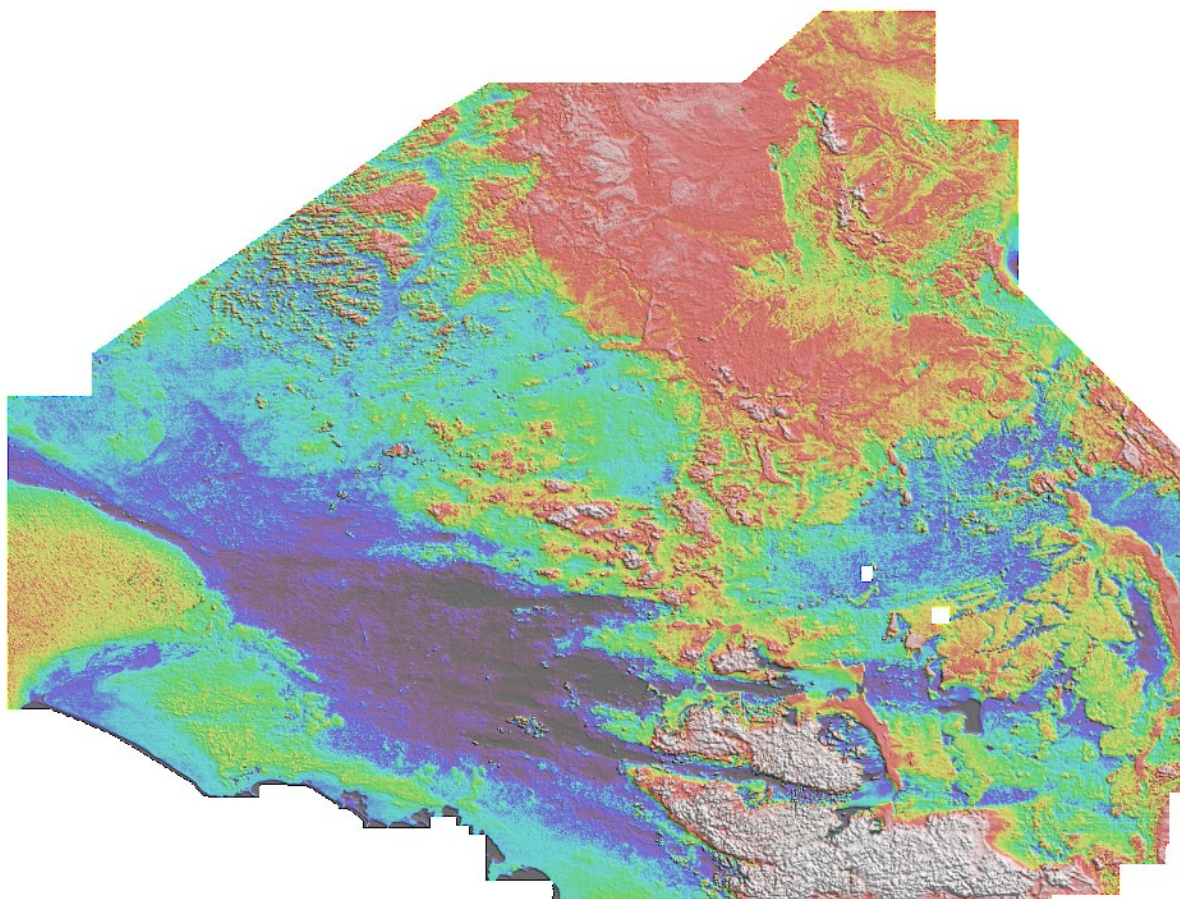


The Gawler Craton Airborne Survey
Reprocessed Radiometric Data



**Laszlo Katona, Gary Reed, Philip Heath, George Gouthas, Jonathan Irvine,
Mark Baigent**

February 2021

DATA PACKAGE: GDP00120_GCAS_REPROCESSED_RAD_GSSA

Department for Energy and Mining

Level 4, 11 Waymouth Street, Adelaide

GPO Box 320, Adelaide SA 5001

Phone +61 8 8463 3000

Email dem.minerals@sa.gov.au

dem.petroleum@sa.gov.au

www.energymining.sa.gov.au

South Australian Resources Information Gateway (SARIG)

SARIG provides up-to-date views of mineral, petroleum and geothermal tenements and other geoscientific data. You can search, view and download information relating to minerals and mining in South Australia including tenement details, mines and mineral deposits, geological and geophysical data, publications and reports (including company reports).

map.sarig.sa.gov.au



© Government of South Australia 2021

With the exception of the piping shrike emblem and where otherwise noted, this product is provided under a [Creative Commons Attribution 4.0 International Licence](https://creativecommons.org/licenses/by/4.0/).

Disclaimer

The contents of this report are for general information only and are not intended as professional advice, and the Department for Energy and Mining (and the Government of South Australia) make no representation, express or implied, as to the accuracy, reliability or completeness of the information contained in this report or as to the suitability of the information for any particular purpose. Use of or reliance upon the information contained in this report is at the sole risk of the user in all things and the Department for Energy and Mining (and the Government of South Australia) disclaim any responsibility for that use or reliance and any liability to the user.

Preferred way to cite this publication

Katona LF, Reed GD, Heath PJ, Gouthas G, Irvine JA, Baigent, M. *The Gawler Craton Airborne Survey Reprocessed Radiometric Data*, Data Package GDP00120_GCAS_REPROCESSED_RAD_GSSA. Department for Energy and Mining, South Australia, Adelaide.

Abstract:

Raw radiometric data for each of the sixteen GCAS regions were reprocessed by Baigent Geosciences, in an effort to retain maximum signal and achieve the highest possible degree of internal consistency in relation to data calibration and processing across the broader GCAS survey region. Noise-adjusted singular value decomposition (NASVD) smoothing was incorporated into the processing stream, which is detailed in processing reports provided in the download package. The resulting located data was used for the merged GCAS radiometric products. The release of this raw data provides the lineage between the merged product and its data sources.

The package contains the located, reprocessed radiometric data (using NASVD), processing report, geodetic (GDA94) and projected (GDA94, MGA53) grids, as follows:

For each of the sixteen GCAS survey regions:

- Located data – dat, des, dfn files
- Geodetic and projected grids of Dose rate, Uranium ppm, Thorium ppm, Potassium pct.
- Processing report.

Acknowledgements

The GSSA gratefully acknowledges all who have contributed to the success of the GCAS project including:

Ursula Michael (GSSA), Geoscience Australia - in particular Matthew Hutchens and David McInnes; Baigent Geosciences; Minty Geophysics; MagSpec Airborne Surveys Pty Ltd; Sander Geophysics, Thomson Aviation Airborne Geophysical Survey; GPX Surveys.