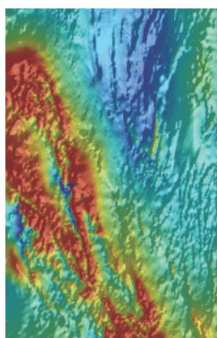
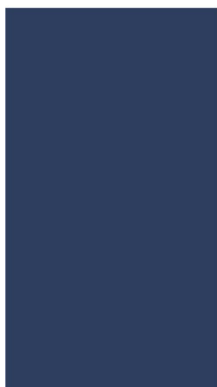


## Department of State Development

Metadata: PACE AusLAMP – Gawler  
Craton

Date Printed: 04/04/2018



**Government of South Australia**  
Department of State Development

---

## Dataset

**Title:** PACE AusLAMP – Gawler Craton

**Custodian:** Geological Survey of South Australia

**Jurisdiction:** South Australia

---

## Description

### Abstract:

The Australian Lithospheric Architecture Magnetotelluric Project (AusLAMP) is an eventual continent-wide deployment of long-period (10-10 000 s) magnetotelluric instruments in a half-degree interval (~55 km) grid across Australia to map the electrical resistivity structure of the continental lithosphere. AusLAMP aims to provide constraints on the tectonic evolution of the continent and the mineral exploration potential as part of the UNCOVER initiative. Areas covered by the survey include the Mesoproterozoic Coompana Province, the mineral-rich Archean-Proterozoic Gawler Craton beneath cover of the Neoproterozoic Stuart Shelf, extending across to the east to cover the Neoproterozoic Ikara-Flinders Ranges and Paleo-Mesoproterozoic Curnamona Province. The central Gawler Craton is imaged as a resistive zone with conductive margins surrounding the core of the cratonic block at shallow upper mantle depths. The results of the inversions of the AusLAMP data highlight the correlative significance with other geochemical data as a geophysical fertility vector for mineral systems.

### ANZLIC Search Terms:

INDUSTRY Mining

MINERALS

GEOSCIENCES Geophysics

GEOSCIENCES Surveys Exploration Mapping Models

**GEN Category:** South australia

**GEN Custodial Jurisdiction:** South australia

**GEN Name:** South australia

**North bounding latitude:** -28.25

**South bounding latitude:** -35.25

**East bounding longitude:** 141.75

**West bounding longitude:** 128.75

---

## Data Currency

**End Date:** current

---

## Dataset Status

**Progress:** Complete

**Maintenance:** Irregular

**Version Number:** 1

---

## Access

**Stored format:** DIGITAL

**Available format(s):** DIGITAL

**Access constraint(s):** This data is licensed under a Creative Commons Attribution 3.0 Australian Licence (BY)



## Data Quality

**Lineage:** extracted from SA Geodata.

**Positional accuracy:** Accurate to approximately 100 metres

**Attribute accuracy:** Accurate

**Logical consistency:** Consistent

**Completeness:** In progress, subject to update

---

## Contact Information

**Contact organisation:** Department of the Premier and Cabinet

**Contact position:** Customer Service Centre

**Contact mail address:** GPO Box 320, Adelaide SA, 5001

**Contact telephone:** 08 8463 3000

**Contact email:** Resources.customerservices@sa.gov.au

---

## Metadata Dates

**Add date:** 2018-04-04

**Change date:** 2018-04-04

---

## Responsible Party

**Responsible party:** Geoscience Group, Geological Survey of South Australia

**Responsible party function:** Custodian/Steward

---

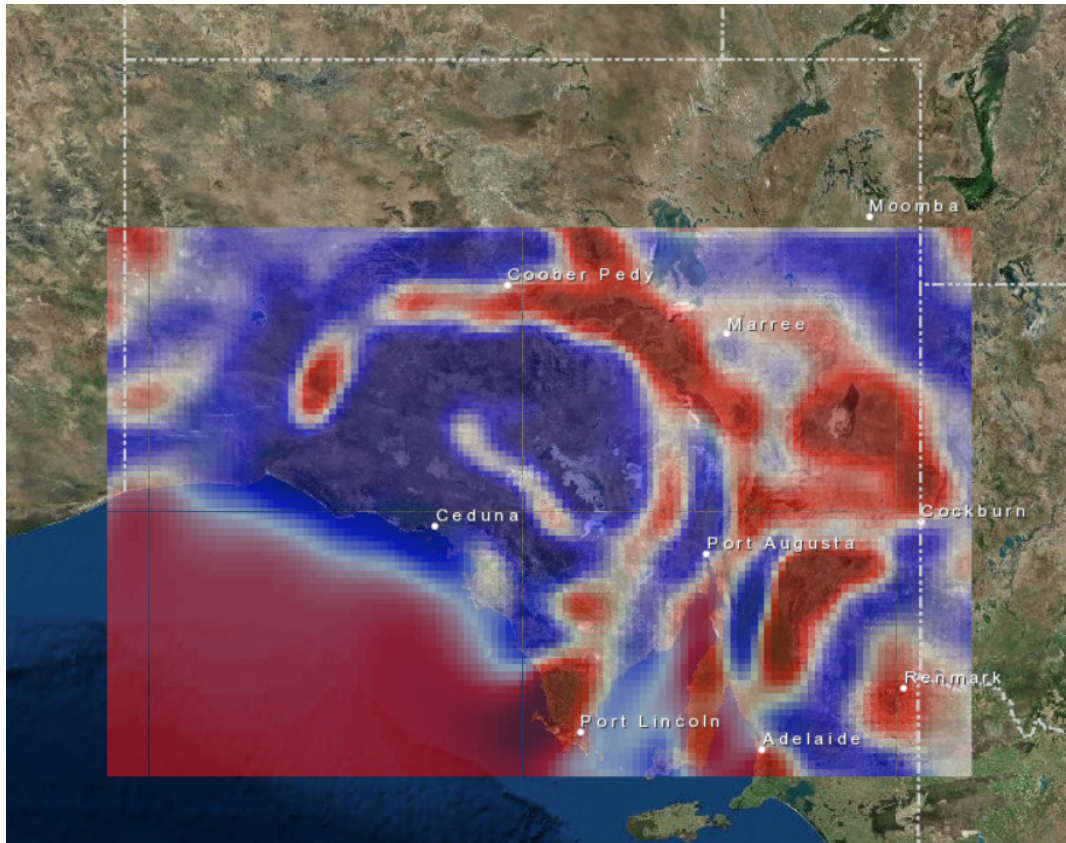
## Description

**Dataset classification:** Principal version

**Spatial representation type:** Raster

**Dimension:** x,y,h

**Sample Graphic(s)**



PACE AusLAMP Gawler 50 km Resistivity Depth Slice

## Usage

**Purpose:** Mineral exploration; modelling

**Use:** Project generation; exploration

---

## Dataset Associations

---

## Origin

**Projection:** Geographical

**Datum:** WGS 84

---

## Dataset Management

**Authorised date:** 2018-04-04

**Authorised by:** Senior Geophysicist

## Attributes

---