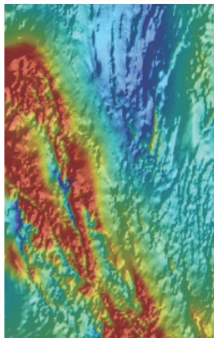


## Department of State Development

Metadata: Flinders Ranges 3D  
Earthquake Hypocentres

Date Printed: 01/04/2015



---

## Dataset

**Title:** Flinders Ranges 3D Earthquake Hypocentres

**Custodian:** Geological Survey of South Australia. Department of State Development

**Jurisdiction:** South Australia

---

## Description

### Abstract:

A joint Geoscience Australia - PIRSA survey of earthquake activity within the Flinders Ranges region, which was conducted from September 2003 to July 2005, used 18 seismographs (including some Australian National Seismic Imaging Resource equipment) that were temporarily installed at selected locations in the northern Mount Lofty Ranges and Flinders Ranges to detect earthquakes. Over 500 earthquakes were located. Of these, 289 having better quality hypocentres were selected for display. Earthquake source locations with large horizontal, vertical or origin time errors, or with large gap angles, were removed. The remaining hypocentres have been plotted with their location error ellipsoids (2 sigma) to demonstrate the possible location errors. The subject visualisation model provides the first instance of an earthquake dataset for this area that is suitable for comparing the loci of earthquakes with geology and topography in 3D.

**GEN Name:** Adelaide Geosyncline, South Australia

**Geographic Extent Polygon:** E211000 N6203000, E211000 N6620000, E372000 N6620000, E372000 N6203000

**North bounding latitude:** N6620000

**South bounding latitude:** N6203000

**East bounding longitude:** E372000

**West bounding longitude:** E211000

---

## Data Currency

**Beginning Date:** 2008-08-19

**End Date:** 2008-08-31

---

## Dataset Status

**Progress:** Complete

**Maintenance:** As required

**Version Number:** 1

---

## Access

**Stored format:** DIGITAL, 3D-pdf

**Available format(s):** DIGITAL, 3D-pdf, Gocad

**Access constraint(s):** Open File

---

## Data Quality

**Positional accuracy:** Vertical accuracy of the topography and earthquake hypocentres are variable due to resampling (topographic surface) and interpretation (earthquake hypocentres).

---

## Contact Information

**Contact organisation:** Department of State Development, South Australia

**Contact position:** Customer Service Centre

**Contact mail address:** GPO Box 1671, Adelaide, SA 5001

**Contact telephone:** 08 8463 3000

**Contact email:** resources.customerservices@sa.gov.au

---

## Metadata Dates

**Add date:** 2012-02-20

**Change date:** 2015-04-01

---

## Responsible Party

**Responsible party:** Chief Geoscientist, Mapping and Exploration, GSSA

---

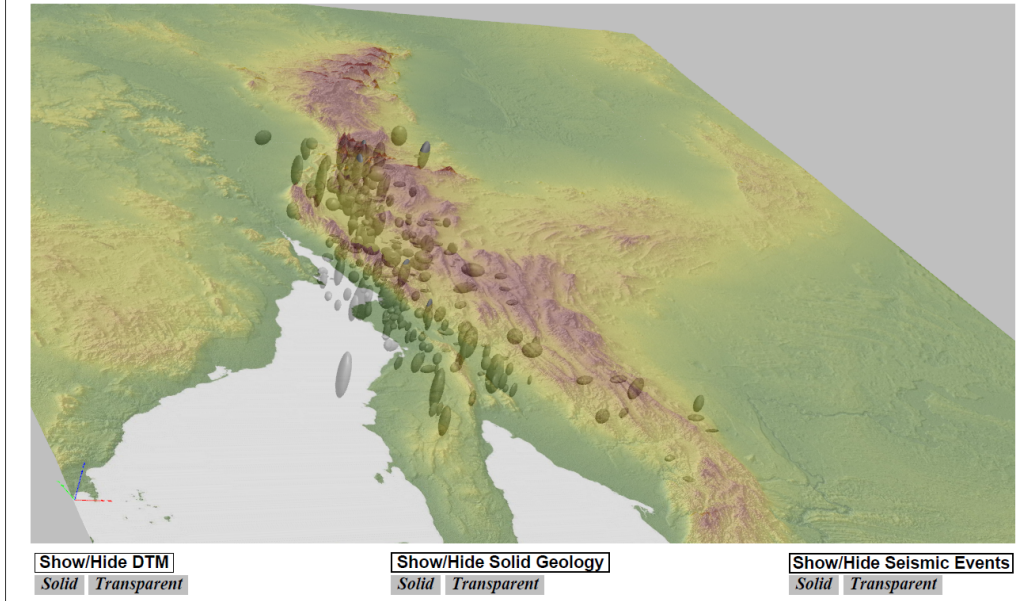
## Description

**Dataset classification:** Principal version

**Dimension:** x,y,h

**Sample Graphic(s)**

# Flinders Ranges Earthquake Hypocentres



## Flinders Ranges 3D Earthquake Hypocentres pdf

### Usage

**Purpose:** Exploration geology, 3D visualisation

**Use:** Exploration geology, 3D visualisation

**Usage limitations:** This model is presented as a 'proof of concept' only and the accuracy (spatial or otherwise) should not be relied upon for exploration or other decision making processes.

---

## Dataset Associations

---

### Origin

**Dataset size:** 9.8MB

**Projection:** UTM Zone 54

**Datum:** GDA94

---

## Dataset Management

**Authorised by:** Chief Geoscientist, Mapping and Exploration, GSSA

### Attributes

---