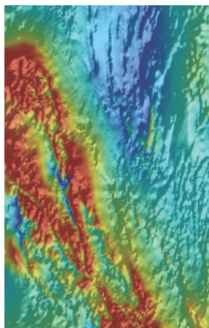


Department of State Development

Metadata: Cultana Regional 3D Model

Date Printed: 26/03/2015



Dataset

Title: Cultana Regional 3D Model

Custodian: Geological Survey of South Australia. Department for Manufacturing, Innovation, Trade, Resources and Energy

Jurisdiction: South Australia

Description

Abstract:

The Cultana 3D Geological Model covers an area which includes the Roopena and western half of the Cultana 1:100,000 map sheet areas. The geology of the model area comprises a succession of deformed Palaeoproterozoic sedimentary and intrusive rocks which are overlain by the Corunna Conglomerate and Mesoproterozoic Gawler Range Volcanics and intruded by the Hiltaba Suite granites. In the east of the model area the Gawler Craton basement is overlain by a sequence of Neoproterozoic sediments and volcanics of the Stuart Shelf. These sediments have been eroded from the uplifted block of the Cultana Inlier, to expose the basement below.

GEN Name: Roopena and Cultana 1:100,000 map sheets, South Australia

Geographic Extent Polygon: E1178000 N1880000; E1178000 N1945000; E1263000 N1945000; E1263000 N1880000

North bounding latitude: N1945000

South bounding latitude: N1880000

East bounding longitude: E1263000

West bounding longitude: E1178000

Data Currency

Beginning Date: 29Jun2007

End Date: 28Apr2008

Dataset Status

Progress: Complete

Maintenance: As required

Version Number: 1

Access

Stored format: DIGITAL, 3D-pdf

Available format(s): DIGITAL, 3D-pdf, Gocad, Geomodeller

Access constraint(s): Data is not to be redistributed without approval from Authorisation Officer.

Data Quality

Positional accuracy: Horizontal accuracy of the drillholes is variable due to the method of capture (map, hand-held GPS, differential GPS, etc); Horizontal accuracy of the geological boundaries are variable (interpreted); Vertical accuracy of the interpolated formation volumes and topographic surfaces are variable due to resampling (topographic surface), interpretation and interpolation (formation volumes).

Attribute accuracy: N/A

Contact Information

Contact organisation: Department for Manufacturing, Innovation, Trade, Resources and Energy, South Australia

Contact position: Customer Services Centre

Contact mail address: GPO Box 1264, Adelaide, SA 5001

Contact telephone: 08 8463 3000

Contact email: dmitre.minerals@sa.gov.au

Metadata Dates

Add date: 2012-02-20

Change date: 2013-06-20

Responsible Party

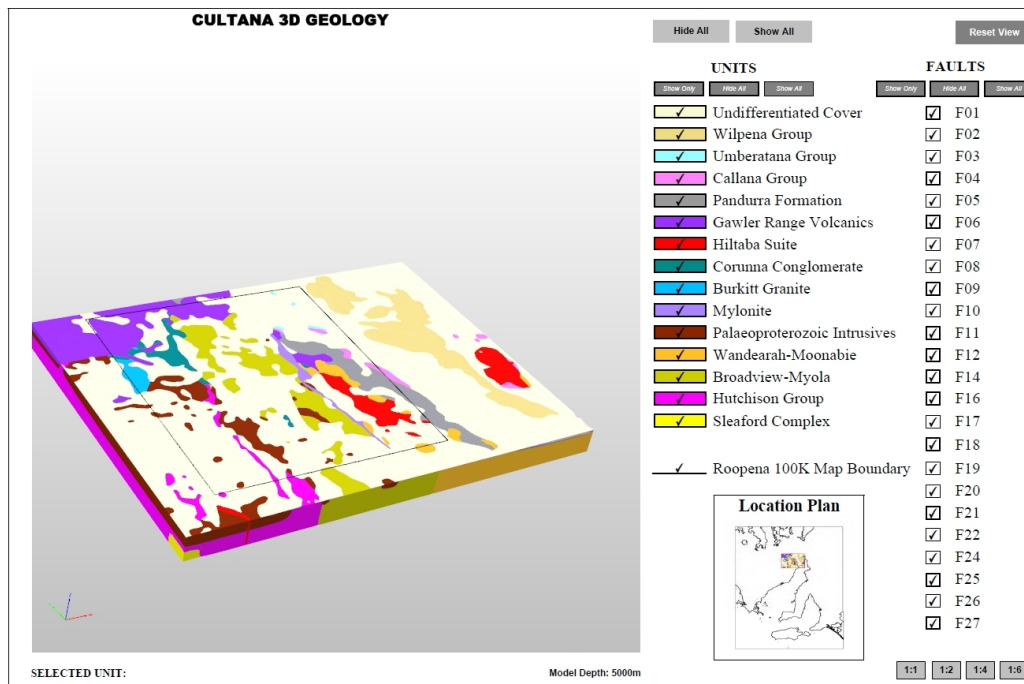
Responsible party: Chief Geoscientist, Mapping and Exploration, GSSA

Description

Dataset classification: Principal version

Dimension: x,y,h

Sample Graphic(s)



www.minerals.pir.sa.gov.au
Model is visible only with Acrobat Reader 8 or later

Created by: George Gouthas
Stacey McAvaney
Laszlo Katona

Cultana model 3D-pdf

Usage

Purpose: Exploration geology, 3D visualisation

Use: Exploration geology, 3D visualisation

Usage limitations: This model is presented as a 'proof of concept' only and the accuracy (spatial or otherwise) should not be relied upon for exploration or other decision making processes.

Dataset Associations

Dependant datasets: http://www.minerals.pir.sa.gov.au/geology/3d_geological_models/cultana

Origin

Dataset size: 3D-pdf: 4.5MB

Projection: Lambert 28+36

Datum: GDA94

Dataset Management

Authorised by: Chief Geoscientist, Mapping and Exploration, GSSA

Attributes
