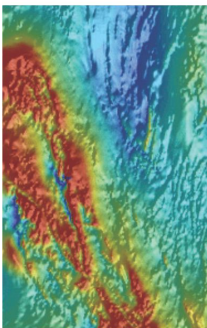


Department of State Development

Metadata: Pirie Water HyMap Survey

Date Printed: 12/02/2015



Dataset

Title: Pirie Water HyMap Survey

Custodian: Department of State Development

Jurisdiction: South Australia

Description

Abstract:

HyVista Corporation was contracted by PIRSA to process HyMap airborne hyperspectral scanner data, acquired over the Port Pirie region in SA, in 2003. Nominal pixel size acquired was 4.5 m by 4.5 m with survey area of 117.8 km². The HyMap is an airborne hyperspectral scanner delivering 126 bands (approx 18 nm width per band) of imagery over the 450nm to 2500nm spectral interval. The HyMap data pre-processing is carried out on a strip by strip basis producing radiance, apparent reflectance, and GLT (Geometric Lookup Table) files for later geometric rectification/mosaicing. The reflectance images are cross-track and level corrected, (i.e. solar illumination corrected). These reflectance images are then geo-corrected to position each individual pixel in its accurate geo-location in the UTM/WGS 84 map projection. The corrected strips are then mosaiced to produce a seamless, homogeneous data (map) cube for the whole survey area, (Level 1C processing). This data-cube is then processed to produce the various Level 2 and 3 image products (Decorrelation Stretch RGB, Mineral Map Multimineral Rule Classified, Mineral Map Ternary RGB, Mineral Maps Pseudocolor, Mineral Maps Greyscale Threshold, MNF Transform RGB, Overview Colour Composites, Wavelength Mapping - Mineral Chemistry and Composition).

ANZLIC Search Terms:

MINERALS

PHOTOGRAPHY AND IMAGERY Remote Sensing

GEN Category: South Australia

GEN Custodial Jurisdiction: South Australia

GEN Name: Port Pirie

Geographic Extent Polygon: -33.055205 137.950376, -33.055205 138.116327, -32.777108 137.950376, -33.185394 138.116327

North bounding latitude: -33.055205

South bounding latitude: -33.185394

East bounding longitude: 138.116327

West bounding longitude: 137.950376

Data Currency

Beginning Date: 13/03/2002

End Date: 13/03/2002

Dataset Status

Progress: Complete

Maintenance: As required

Version Number: 1

Access

Stored format: DIGITAL

Available format(s): DIGITAL

Access constraint(s): Data are the property of Department of State Development South Australia (DSD). There are no restrictions on DSD personnel distributing the data to its customers – Chief Geoscientist, Mapping and Exploration, GSSA.
This work is licensed under a Creative Commons Attribution 3.0 Australia License.



Data Quality

Contact Information

Contact organisation: Department of State Development

Contact position: Customer Services Centre

Contact mail address: GPO Box 320, Adelaide, SA, 5001

Contact telephone: +61 8 8463 3000

Contact email: resources.customerservices@sa.gov.au

Metadata Dates

Add date: 2015-02-10

Change date: 2015-02-12

Responsible Party

Responsible party: Chief Geoscientist, Mapping and Exploration, GSSA

Responsible party function: Custodian/Steward

Description

Dataset classification: Derived

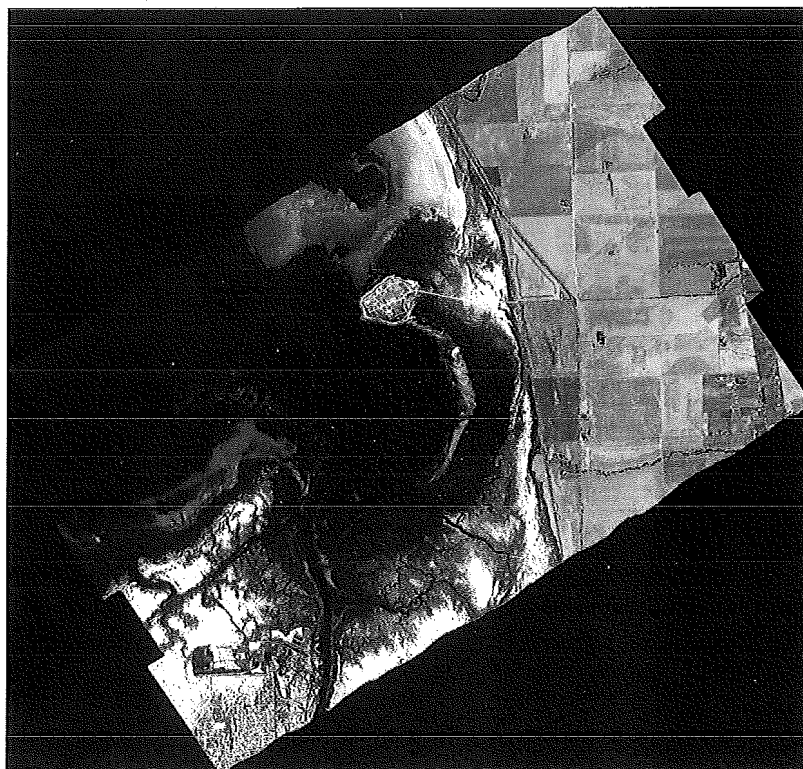
Spatial representation type: Raster

Dimension: x,y

Sample Graphic(s)

IMAGE MOSAIC

PIRIE_WATER MOSAIC



Hyvista Corporation Pty Ltd (A.C.N. 087 620 737)
PO Box 437, Baulkham Hills NSW 1755 Australia
22 Delhi Road, North Ryde NSW 2113 Australia

Pirie Water Survey Location

Usage

Purpose: Mineral exploration and geoscientific analysis

Use: Mineral exploration and geoscientific analysis

Dataset Associations

Origin

Projection: UTM Zone 54

Datum: WGS 84

Dataset Management

Authorised by: Chief Geoscientist, Mapping and Exploration, GSSA

Attributes
