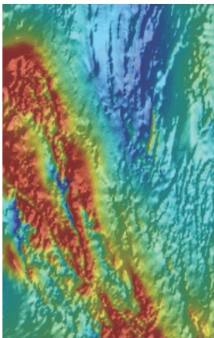
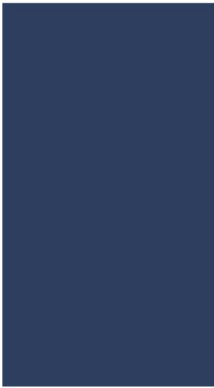


Department of State Development

Metadata: Remote Sensing - LANDSAT
5

Date Printed: 12/02/2015



Dataset

Title: Remote Sensing - LANDSAT 5

Custodian: Department of State Development - Geological Survey of South Australia

Jurisdiction: South Australia

Description

Abstract:

Landsat 5 had a maximum transmission bandwidth of 85 Mbit/s. It was deployed at an altitude of 705.3 km (438.3 mi), and it took about 16 days to scan the entire Earth. The satellite was an identical copy of Landsat 4 and was originally intended as a backup. Therefore, Landsat 5 carried the same instruments, including the Thematic Mapper and Multi-Spectral Scanner. The Multi-Spectral Scanner was powered down in 1995, but reactivated again in 2012.

ANZLIC Search Terms:

GEOSCIENCES

PHOTOGRAPHY AND IMAGERY Remote Sensing

GEN Category: South Australia

Geographic Extent Polygon: -26.0 129.0, -26.0 141.0, -43.0 141.0, -43.0 129.0

North bounding latitude: -26.0

South bounding latitude: -43.0

East bounding longitude: 141.0

West bounding longitude: 129.0

Data Currency

Beginning Date: 6/10/1986

End Date: 16/4/1996

Dataset Status

Progress: Complete

Version Number: 1

Access

Stored format: DIGITAL

Available format(s): DIGITAL

Access constraint(s): Data are the property of Department of State Development South Australia (DSD). There are no restrictions on DSD personnel distributing the data to its customers – Chief Geoscientist, Mapping and Exploration, GSSA.



Data Quality

Lineage: Landsat 5 1 March 1984 Thematic Mapper stopped acquiring data 18 November 2011

Contact Information

Contact organisation: Department of State Development

Contact position: Customer Service Centre

Contact mail address: GPO Box 320, Adelaide, SA 5001

Contact telephone: +61 8 8463 3000

Contact email: resources.customerservices@sa.gov.au

Metadata Dates

Add date: 2014-11-07

Change date: 2015-02-12

Responsible Party

Responsible party: Chief Geoscientist, Mapping and Exploration, GSSA

Responsible party function: Custodian/Steward

Description

Dataset classification: Derived

Spatial representation type: Vector:Polygon

Dimension: x,y

Sample Graphic(s)



Landsat Coverage

Usage

Dataset Associations

Origin

Projection: Geographical

Datum: WGS 84

Dataset Management

Authorised by: Chief Geoscientist, Mapping and Exploration, GSSA

Attributes
