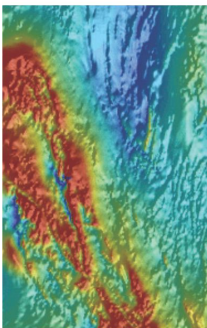


Department of State Development

Metadata: Boomerang HyMap Survey

Date Printed: 12/02/2015



Dataset

Title: Boomerang HyMap Survey

Custodian: Department of State Development

Jurisdiction: South Australia

Description

Abstract:

HyVista Corporation was contracted by PIRSA to process HyMap airborne hyperspectral scanner data, acquired over the Boomerang region in SA, in 1998. Nominal pixel size acquired was 4.5 m by 4.5 m with survey area of 72.5 km². The HyMap is an airborne hyperspectral scanner delivering 126 bands (approx 18 nm width per band) of imagery over the 450nm to 2500nm spectral interval. The HyMap data pre-processing is carried out on a strip by strip basis producing radiance, apparent reflectance, and GLT (Geometric Lookup Table) files for later geometric rectification/mosaicing. The reflectance images are cross-track and level corrected, (i.e. solar illumination corrected). These reflectance images are then geo-corrected to position each individual pixel in its accurate geo-location in the UTM/WGS 84 map projection. The corrected strips are then mosaiced to produce a seamless, homogeneous data (map) cube for the whole survey area, (Level 1C processing). This data-cube is then processed to produce the various Level 2 and 3 image products (Decorrelation Stretch RGB, Mineral Map Multimineral Rule Classified, Mineral Map Ternary RGB, Mineral Maps Pseudocolor, Mineral Maps Greyscale Threshold, MNF Transform RGB, Overview Colour Composites, Wavelength Mapping - Mineral Chemistry and Composition).

ANZLIC Search Terms:

MINERALS

PHOTOGRAPHY AND IMAGERY Remote Sensing

GEN Category: South Australia

GEN Custodial Jurisdiction: South Australia

GEN Name: Boomerang

Geographic Extent Polygon: -30.686829 134.244897, -30.686829 134.572640, -30.847783 134.244897, -30.847783 134.572640

North bounding latitude: -30.686829

South bounding latitude: -30.847783

East bounding longitude: 134.572640

West bounding longitude: 134.244897

Data Currency

Beginning Date: 21/01/1999

End Date: 21/01/1999

Dataset Status

Progress: Complete

Maintenance: As required

Version Number: 1

Access

Stored format: DIGITAL

Available format(s): DIGITAL

Access constraint(s): Data are the property of Department of State Development South Australia (DSD). There are no restrictions on DSD personnel distributing the data to its customers – Chief Geoscientist, Mapping and Exploration, GSSA.
This work is licensed under a Creative Commons Attribution 3.0 Australia License.



Data Quality

Contact Information

Contact organisation: Department of State Development

Contact position: Customer Services Centre

Contact mail address: GPO Box 320, Adelaide, SA, 5001

Contact telephone: +61 8 8463 3000

Contact email: resources.customerservices@sa.gov.au

Metadata Dates

Add date: 2015-02-10

Change date: 2015-02-12

Responsible Party

Responsible party: Chief Geoscientist, Mapping and Exploration, GSSA

Responsible party function: Custodian/Steward

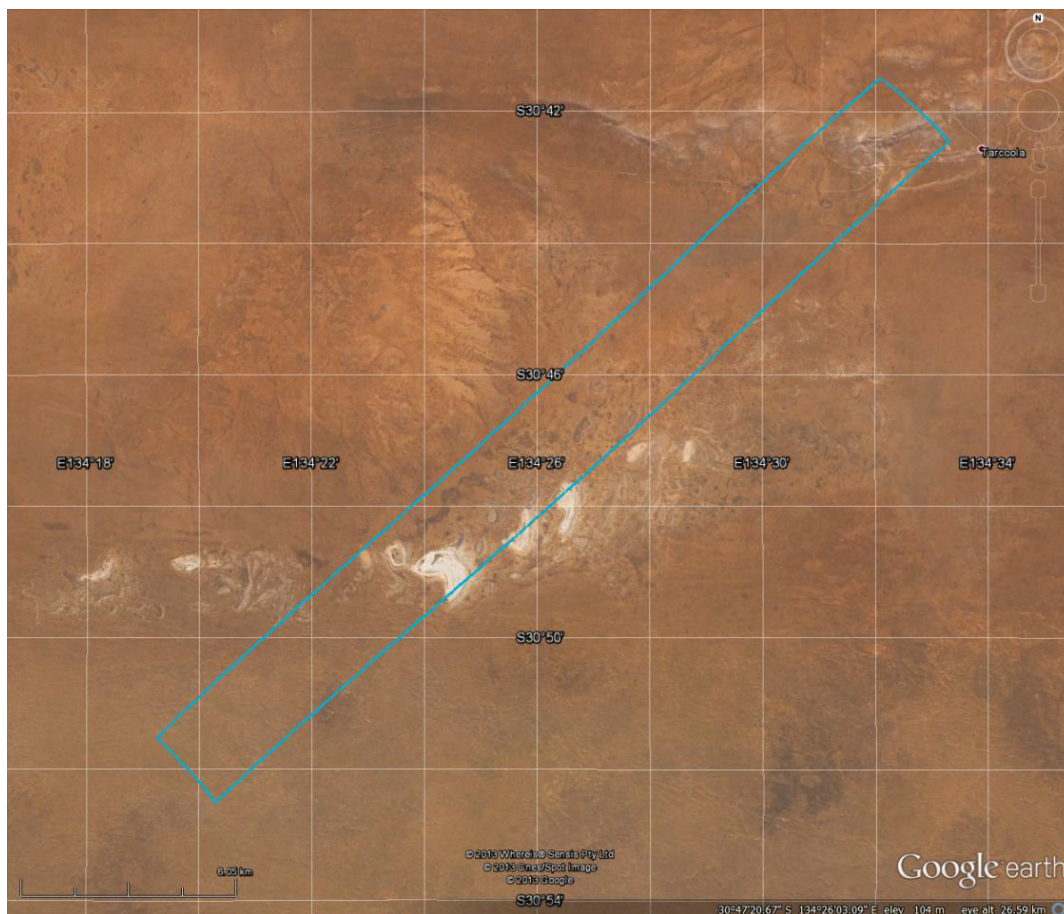
Description

Dataset classification: Derived

Spatial representation type: Raster

Dimension: x,y

Sample Graphic(s)



Boomerang Survey Location

Usage

Purpose: Mineral exploration and geoscientific analysis

Use: Mineral exploration and geoscientific analysis

Dataset Associations

Origin

Projection: UTM Zone 53

Datum: WGS 84

Dataset Management

Authorised by: Chief Geoscientist, Mapping and Exploration, GSSA

Attributes
