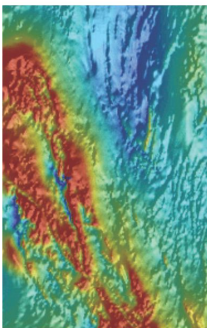


Department of State Development

Metadata: Calcrete Analysis/Reanalysed

Date Printed: 02/04/2015



Dataset

Title: Calcrete Analysis/Reanalysed

Custodian: Department of State Development, Resources and Energy

Jurisdiction: South Australia

Description

Abstract:

All calcrete locations. The information is extracted from an Oracle database known as SA_GEODATA. Data on geochemistry, geological logs and administrative information for drillholes has been established throughout the state.

ANZLIC Search Terms:

INDUSTRY Mining

GEOSCIENCES

GEN Custodial Jurisdiction: Australia

GEN Name: South Australia

Geographic Extent Polygon: 129 -38.5, 129 -26, 141 -26, 141 -38.5, 129 -38.5

North bounding latitude: -26

South bounding latitude: -38.5

East bounding longitude: 141

West bounding longitude: 129

Data Currency

Dataset Status

Progress: Planned

Maintenance: Continual

Version Number: 1

Access

Stored format: DIGITAL ArcSDE vector data, geographicals GDA94

Available format(s): DIGITAL ESRI shapefile

DIGITAL MapInfo

DIGITAL Google EarthL

Access constraint(s): This data is licensed under a Creative Commons Attribution 3.0 Australian Licence

(BY)

SARIG Layer(s): Data:Sampling Analyses\Calcrete Analysis/Reanalysed



Data Quality

Lineage: SA_GEODATA Oracle database.

Positional accuracy: Variable depending on spatial data source. Positional accuracy estimates may be included with the data.

Attribute accuracy: Dependant on accuracy of source data

Contact Information

Contact organisation: Mineral Resources Division

Contact position: GIS/Database Manager, Geological Survey

Contact mail address: GPO Box 320
ADELAIDE SA Australia 5001

Contact telephone: +61 8 8463 3000

Contact email: dsd.minerals@sa.gov.au

Metadata Dates

Add date: 2013-02-01

Change date: 2014-12-03

Responsible Party

Responsible party: Geological Survey of South Australia

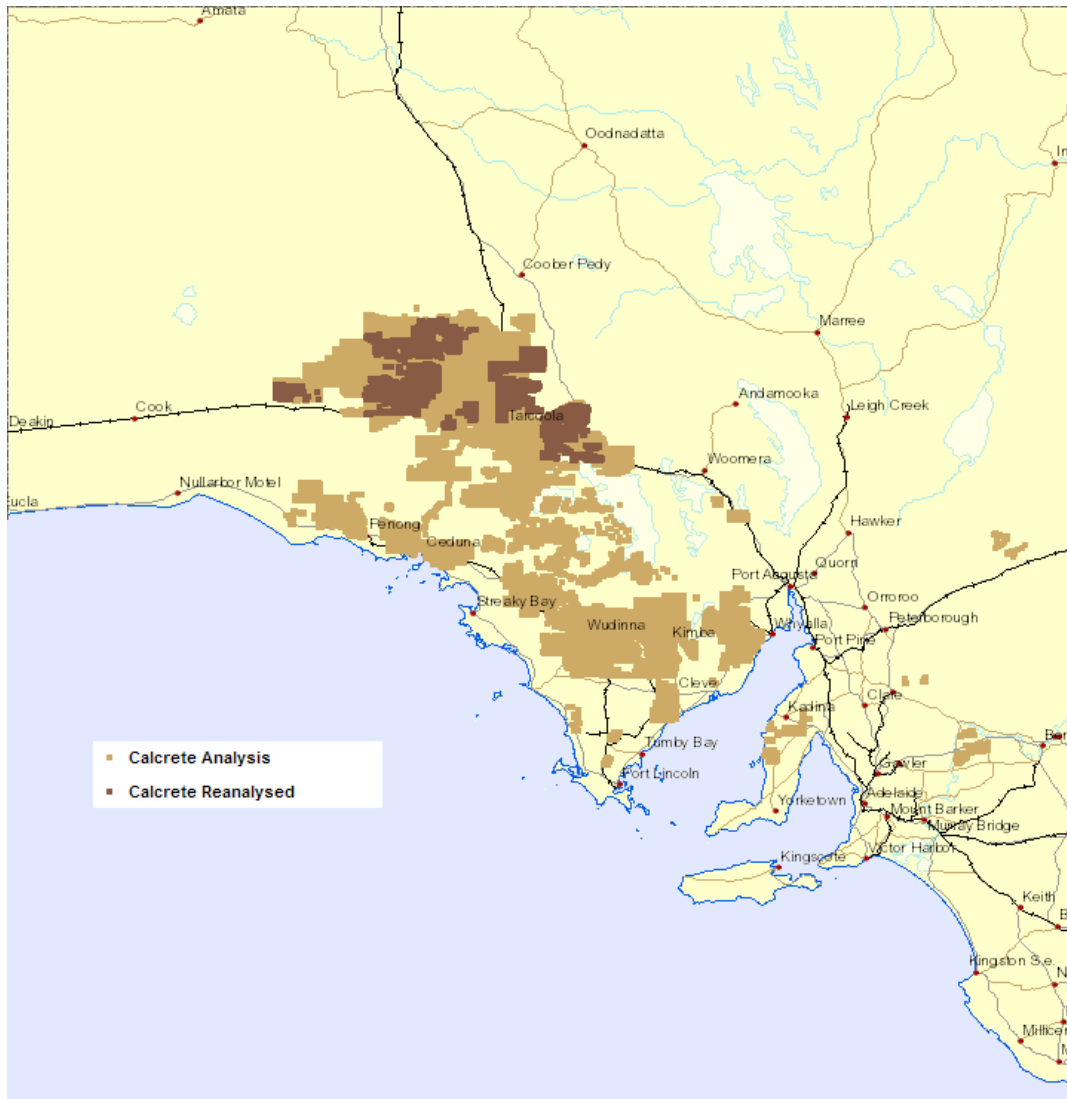
Responsible party function: Content provider

Description

Spatial representation type: Vector:Point

Dimension: x,y

Sample Graphic(s)



Calcrete Analysis/Reanalysed

Usage

Purpose: To aid in geological exploration

Use: Geological and prospectivity assessment

Usage limitations: The items included with this dataset are a subset of available items only. They represent the last recorded information on rock samples in and about South Australia.

Dataset Associations

Origin

Projection: Geographical

Datum: GDA94

Dataset Management

Authorised by: Mineral Resources Division

Attributes

SARIG Name	Download Name	Type	Description	Complete %	Reliable %
Sample No	SAMPLE NO	INTEGER	Unique PIRSA (DMITRE) rock sample identifier		
Collected By	COLLECTED BY	CHARACTER	Sample collector		
Collectors No	COLLNUM	CHARACTER	Originals collector's sample identification number		
Collection Date	COLLDATE	CHARACTER	Sample collection date		
Longitude	LONGITUDE	NUMBER	Decimal longitude degrees (GDA94)		
Analysis Program 1	ANALPROG1	CHARACTER	Analysis Program 1		
Analysis Program 2	ANALPROG2	CHARACTER	Analysis Program 2		
Latitude	LATITUDE	NUMBER	Decimal latitude degrees (GDA94)		
Easting	EASTING	INTEGER	MGA Easting (GDA94)		
Northing	NORTHING	NUMBER	MGA Northing (GDA94)		
Zone	ZONE	INTEGER	MGA Zone (GDA94)		

