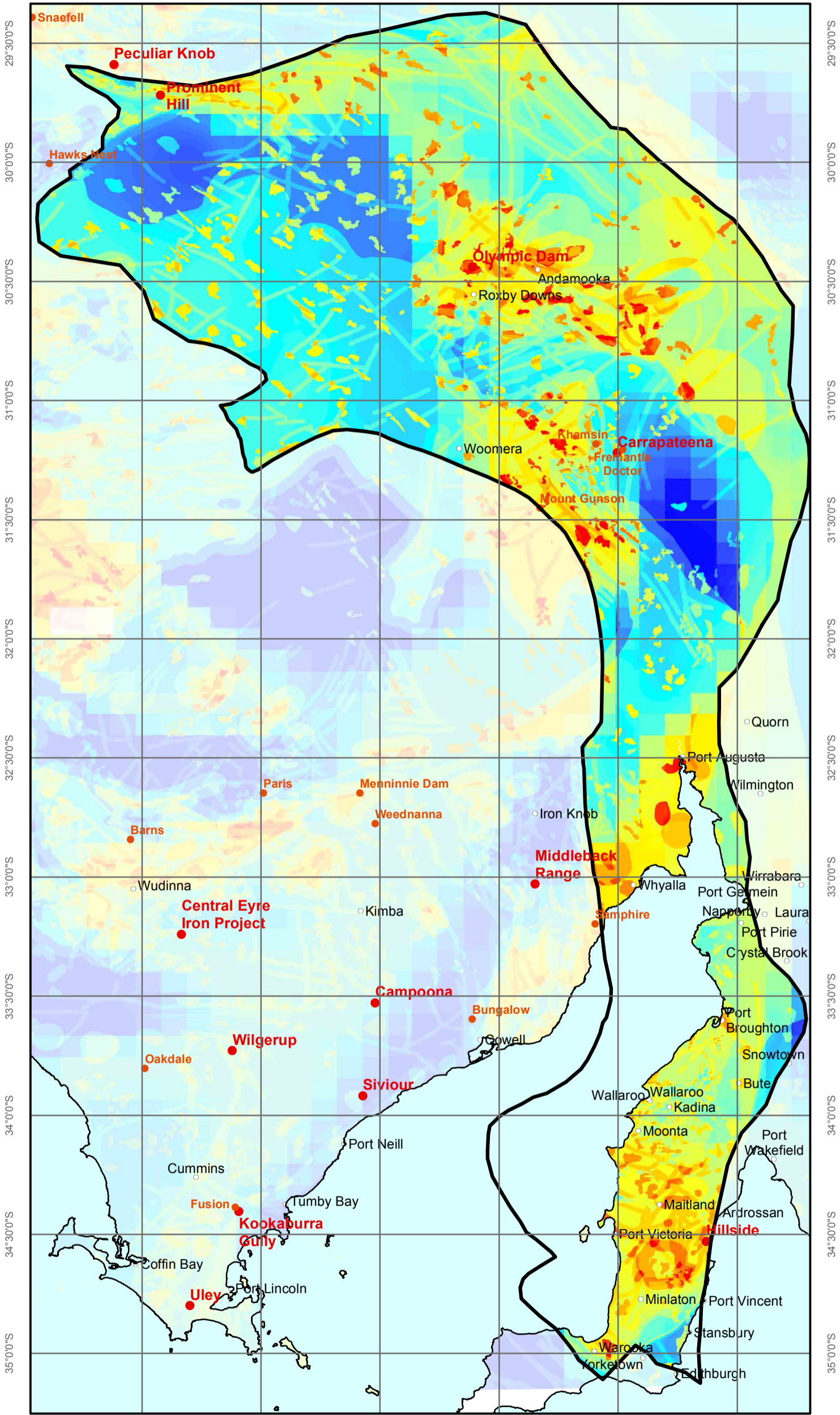


# IOCG PROSPECTIVITY MODELLING OF THE OLYMPIC Cu-Au PROVINCE

GEOLOGICAL SURVEY OF SOUTH AUSTRALIA  
DEPARTMENT FOR ENERGY AND MINING

135°30'0"E 136°0'0"E 136°30'0"E 137°0'0"E 137°30'0"E 138°0'0"E



135°30'0"E 136°0'0"E 136°30'0"E 137°0'0"E 137°30'0"E 138°0'0"E

This map is produced on the Geocentric Datum of Australia (GDA94)

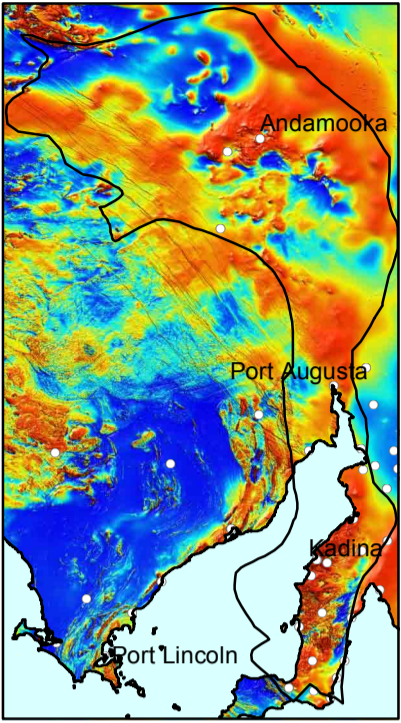
The sheetedge of this map will not coincide with adjoining maps based on the superseded datum (AGD84)

Topographic detail based on TOPO-250K GEODATA (source scale 1:250 000) supplied by Geoscience Australia - National Mapping Division, ACT. The relationship between this data and PIRSA data is not guaranteed.

Any person purchasing this map may reproduce it for their own use or that of their staff, but not for any other purpose except with the written permission of the Chief Executive, Department for Energy and Mining GPO Box 320, Adelaide, South Australia, 5001

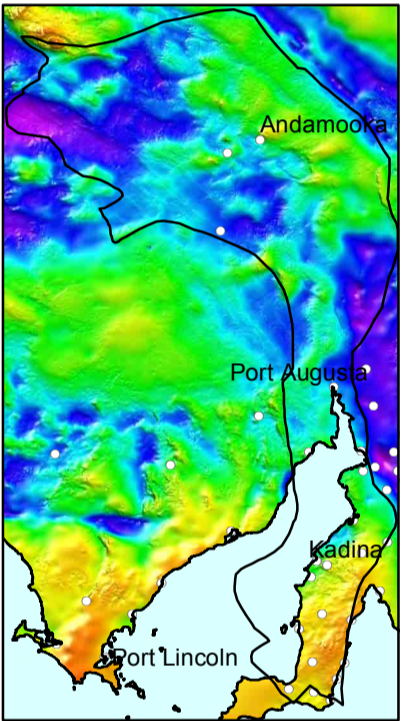
CROWN COPYRIGHT RESERVED  
Department for Energy and Mining  
2019

TOTAL MAGNETIC INTENSITY IMAGE



The Total Magnetic Intensity Image has been compiled using aeromagnetic data from the Department of State Development, South Australia.

BOUGUER GRAVITY ANOMALY MAP



The Bouguer Gravity Anomaly Map has been compiled using gravity data from the Department of State Development, South Australia.

## Relative IOCG Potential



Higher Lower

1:2,000,000

0 10 20 40 60 80 100

Kilometers

Model, drafting and cartography by T.W. Wise

Product of DEM Geological Survey of South Australia.  
Published by, and with the authority of, the  
Department for Energy and Mining

13/06/2019

**PRELIMINARY  
DIGITAL EDITION  
SUBJECT TO AMENDMENT**



Government of South Australia  
Department for Energy and Mining

