



Department of Mines and Energy South Australia



MINERAL OCCURRENCES OF KANGAROO ISLAND

DEPARTMENT OF MINES AND ENERGY
SOUTH AUSTRALIA

REPT. BK. NO. 91/34

MINERAL OCCURRENCES OF KANGAROO
ISLAND : A MINDEP DATABASE PILOT
PROJECT

GEOLOGICAL SURVEY

By

A. F. CROOKS

GEOLOGIST

MINERAL RESOURCES BRANCH

FEBRUARY, 1991

DME 101/81

CONTENTS

PAGE

ABSTRACT

1

INTRODUCTION

1

- MINDEP SYSTEM

1

- Kangaroo Island Pilot Project

3

DATA

FIGURES

Title

Plan No.

Fig. 1 MINDEP: Mineral Occurrences on
 Kangaroo Island

91/203

PLATES

Title

COVER: Rainbow End Mine, view East.

DEPARTMENT OF MINES AND ENERGY
SOUTH AUSTRALIA

REPT. BK. NO. 91/34
DME 101/81
G02536

MINERAL OCCURRENCES OF KANGAROO ISLAND
: A MINDEP DATABASE Pilot Project

ABSTRACT

In 1989 the Mineral Resources Branch of SADME identified the need for a computerised database of mineral occurrences of South Australia. The MINDEP system was procured from the BMR, Canberra. This system has been substantially modified to suit the Branch's needs and a pilot project of mineral occurrences on Kangaroo Island undertaken to trial the system.

Forty three mineral occurrences, both metallic and nonmetallic have been identified and documented. Information includes general locality and descriptive data, orebody geology, historical mining data and significant references.

INTRODUCTION

The MINDEP System

In 1989 the Mineral Resources Branch of SADME identified the need for a computerised inventory of mineral occurrences in the State and obtained a copy of the Bureau of Mineral Resources MINDEP database system. This is an ORACLE based system for storing mineral deposit data.

It was quickly realized that some modification of this database was needed to satisfy all the requirements of the Mineral Resources Branch.

In early 1990 a pilot project simplifying the structure of the original MINDEP system and adding new features began.

The new database structure incorporates four notional subdivisions. These are

DEPOSIT : containing general information relating to each uniquely identified mineral deposit or occurrence.

OREBODY : containing orebody information relating to each uniquely identified orebody and with links to the deposit information of which it is a part.

MINE : containing mine tenement and historical data relating to each uniquely identified mine and with links to the information of the orebodies being worked.

and

REFERENCE: containing a list of significant references relating to mine, orebody or deposit occurrences.

The data format presented here is an ORACLE REPORT generated dump of the significant data for each deposit held in the database. Various data formats and subsets of data can be generated by varying the REPORT generation parameters and selection criteria.

It is envisaged that in the future a variety of standard REPORT formats will be generated to match likely output requests.

One such format is demonstrated as Figure 1, in which mineral deposit location data has been passed from the PC-ORACLE based MINDEP system to the Department's Data General MV20,000 running the TE03D geographic information system. The computer generated plot file merges this mineral occurrence information with the Department's. SA-GEOL State 1:2,000,000 geology database.

Having successfully completed the pilot project phase of the implementation of the new MINDEP System, a short period of refinement and consolidation should see the mineral occurrence database fully operational. A full technical manual documenting the system is currently being written.

The Kangaroo Island Pilot Project

Having decided to implement a computerised mineral occurrence database, Kangaroo Island was selected as a suitable area to provide data for the pilot project principally because of other Departmental interest in the region.

The first problems to overcome were - What level of reliability of data is required to be accepted into the database and what constitutes a mineral occurrence anyway?

A detailed search for Departmental records identified and documented several new occurrences and field trips validated many previously known occurrences.

However, for significant numbers of deposits, only limited or ambiguous data could be found and several known only from old records could not be relocated on the ground at all.

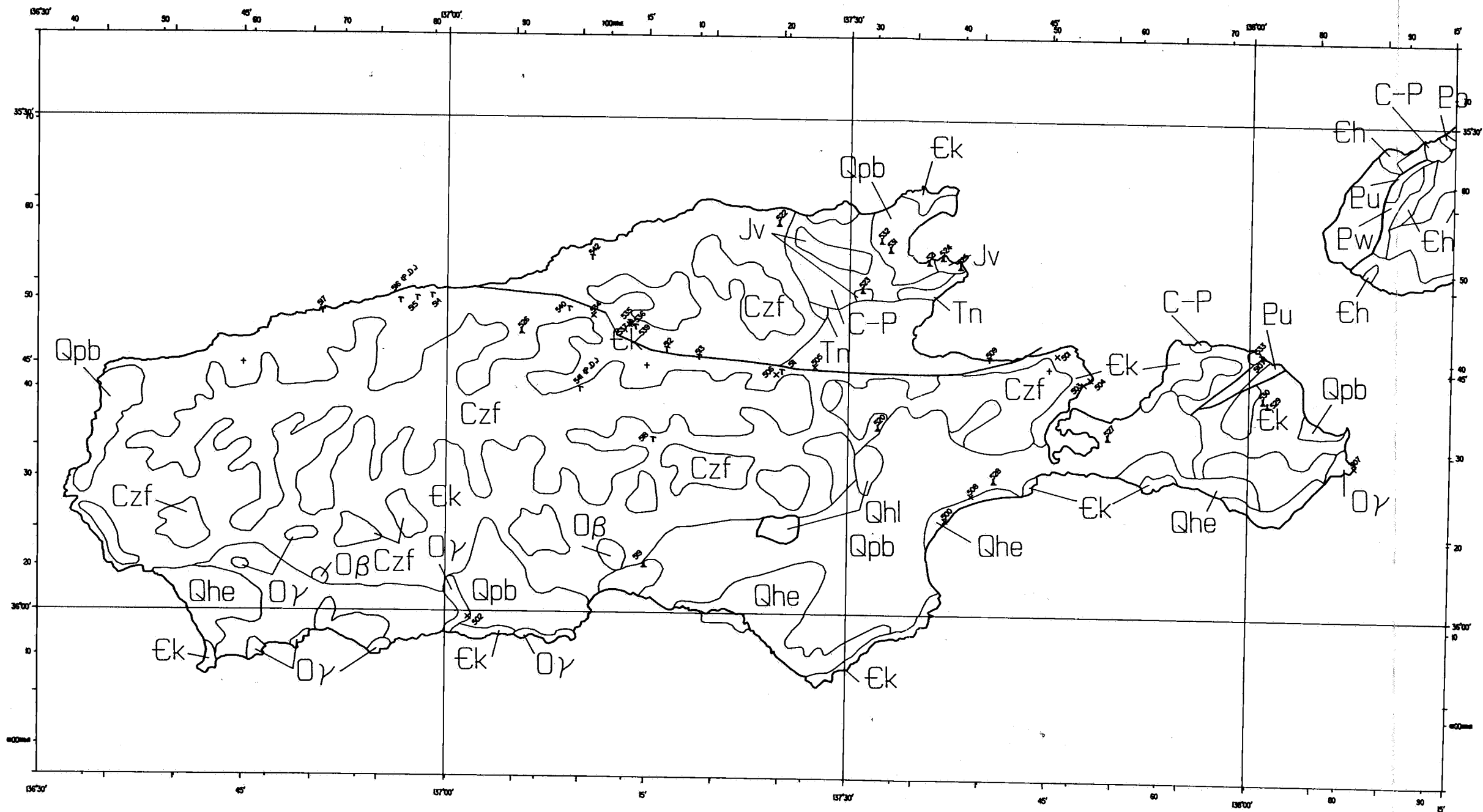
The standard database problem of "garbage in - garbage out" versus nothing in - nothing out was resolved by allowing dubious or invalidated data into the database, if that was all the data which existed, with sufficient warnings to raise the suspicions of the data base users. References to those limited sources of original data are also included in the database so that each user can decide which occurrences to reject or accept depending on the context of each search. That is, the original sources of the data are assumed to have authority while the recorders of that information in the database should only record their own misgivings in the absence of more detailed knowledge.

Forty three mineral occurrences from Kangaroo Island worthy of inclusion in the database were identified and documented. A further half dozen minor deposits, chiefly road aggregate scrapes, have been identified but not included at this stage.

Further data collection and validation will be undertaken in the course of future geological investigations by Departmental personnel in the region.

A.F. CROOKS

MINERAL RESOURCES



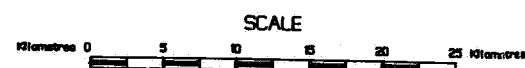
MINDEP Mineral Occurrences Kangaroo Island

Preliminary MINDEP data
on 1:2,000,000 geology

Mineral Resources Branch

LEGEND

- x Unworked Mineral Occurrence
- r Worked metallic mineral occurrence
- 1 Worked nonmetallic mineral occurrence



DEPARTMENT OF MINES AND ENERGY SOUTH AUSTRALIA		Plotted from SA_GEOLOGY database	
MINDEP Mineral Occurrences on Kangaroo Island	DATE	SCALE	PLAN NUMBER
	22.2.81	1:2,000,000	91-203
	04535		

MINERAL RESOURCES OF KANGAROO ISLAND

<u>DEPOSIT</u>	<u>NAME</u>	<u>COMMODITY</u>
500	D'ESTREES	HEAVY MINERALS
501	DEBNEYS	AU
502	LAKE KITTY	MO
503	AMERICAN RIVER	AU CU
504	BALLAST HEAD	AU
505	BOMB ALLEY	AU
506	UNNAMED	AU
507	WILLOUGHBY	MO
508	21W	GYPSUM
509	MORRISON BEACH	HEAVY MINERALS
510	BALD HILL	AU
511	KOHINOOR	AU
512	CYGNET	AU
513	RAINBOW END	AU
514	WESTERN RIVER EAST	PB AG
515	WESTERN RIVER	PB ZN AG
516	WESTERN RIVER WEST	PB ZN AG
517	SNUG COVE	PN ZN AG
518	DAWS DIGGINGS	AU GEMS
519	LITTLE SAHARA	LIME SAND
520	MACGILLIVRAY	SAND GRAVEL
521	DOVER FARMS	FILLING SAND
522	FREESTONE HILL	FLAGSTONE
523	CHAPMAN	AGGREGATE
524	THE BLUFF	AGGREGATE
525	OLD GOVERNMENT QUARRY	AGGREGATE
526	MIDDLE RIVER	AGGREGATE
527	NEW LAKE	SALT GYPSUM
528	SALT LAKE	SALT GYPSUM
529	KI CHINASTONE AND CLAY	CLAY GEMS SILICA FELSPAR
530	UNNAMED	FIRECLAY
531	UNNAMED	SALT
532	UNNAMED	SALT
533	CUTTLEFISH MANGANESE	MN
534	DEWRANG PROSPECT	PB ZN CU
535	GRAINGERS	PB ZN CU AG
536	GRA7	PB ZN AG
537	UNNAMED	AU
538	PERSEVERANCE	PB ZN AG AU
539	BONAVENTURA	CU
540	BELLS	PB AG
541	HICKS	AG
542	UNNAMED	PB ZN

MINERAL DEPOSITS : DEPOSIT INFORMATION

DEPOSIT : 500 D'ESTREES

BRIEF DESCRIPTION : MINOR UNWORKED OCCURRENCE OF HEAVY MINERAL SANDS

MINOR COMMODITY : RUTILE
ZIRCON

GEOLOGICAL PROVINCE : COASTAL ZONE

LOCATION :

lat : deg 35 mins 54 secs 15
long : deg 137 mins 37 secs 24

District Council : KINGSCOTE
Hundred : HAINES Section : County : CARNARVON

250k map : KINGSCOTE 100k map : 6426 KINGSCOTE

LOCATION COMMENTS :

reference point : BEACH
location method : SCALED OFF 50K MAP
comments : LOCALITY TESTED IN RB86/31

MINERAL DEPOSITS : OREBODY INFORMATION

DEPOSIT : 500 D'ESTREES

OREBODY : 500 D'ESTREES

DESCRIPTION : A SINGLE 5 TO 10 CM THICK HEAVY MINERAL ZONE BELOW 25 CMS OF SAND

SETTING :

form : CONCORDANT STRATAFORM
genesis : ALLUVIAL
nature of : DETRITAL
mineralization
controls :
age of : HOLOCENE
mineralization

MINERALOGY

orebody : RUTILE ZIRCON
gangue : QUARTZ SAND CARBONATE SAND
texture :
alteration :
enrichment : MECHANICAL

GEOLOGY :

lithology : BEACH SAND
formation : SEMAPHORE SAND
age : HOLOCENE
relationship :

RESERVES :

commodity : RUTILE INFERRED reserves at 1986

reserves unit grade unit
1 %

CONCENTRATION WITHIN MINERALIZED ZONE

commodity : ZIRCON INFERRED reserves at 1986

reserves unit grade unit
10 %

CONCENTRATION WITHIN MINERALIZED ZONE

MINERAL DEPOSITS : REFERENCES

DEPOSIT : 500 D'ESTREES

FARRAND M 1986
PETROGRAPHIC REPORT 10/86, MINERAL CONTENT OF TWO SAND SAMPLES...
COASTAL PROTECTION ACT, SADME DOCKET 45/86.

MORRIS BJ 1986
RECONNAISSANCE SAMPLING FOR HEAVY MINERAL SANDS, K.I.
RB86/31, UNPUBLISHED SADME REPORT

MINERAL DEPOSITS : DEPOSIT INFORMATION

DEPOSIT : 501 DEBNEYS

also referred to by the name DEBNEYS FARM

BRIEF DESCRIPTION : PROSPECT ON QUARTZ VEIN

MINOR COMMODITY : AU

GEOLOGICAL PROVINCE : KANMANTOO TROUGH

LOCATION :

lat : deg 35 mins 44 secs 10
long : deg 137 mins 45 secs 37

District Council : KINGSCOTE

Hundred : HAINES Section : 96 County : CARNARVON

250k map : KINGSCOTE

100k map : 6426 KINGSCOTE

LOCATION COMMENTS :

reference point : SECTION NO

location method : SCALED OFF 50K MAP

comments : OCCURRENCE NOT LOCATED APART FROM SECTION NUMBER

MINERAL DEPOSITS : OREBODY INFORMATION

DEPOSIT : 501 DEBNEYS

OREBODY : 501 DEBNEYS FARM

DESCRIPTION : QUARTZ VEIN CONCORDANT WITH BEDDING/CLEAVAGE. TRACE OF GOLD ON ASSAY.

SETTING :

form : CONCORDANT
genesis : HYDROTHERMAL
nature of : VEIN
mineralization
controls : STRUCTURAL
age of :
mineralization

MINERALOGY

orebody : GOLD
gangue : ARSENOPYRITES QUARTZ
texture :
alteration :
enrichment :

GEOLOGY :

lithology : PHYLLITIC GREYWACKE
formation : TAPPANAPPA FORMATION
age : CAMBRIAN
relationship :

MINERAL DEPOSITS : REFERENCES

DEPOSIT : 501 DEBNEYS

BROWN HYL 1898
REPORT BY THE GOVERNMENT GEOLOGIST
PARLIAMENTARY PAPERS 36

BROWN HYL 1899
RECORD OF MINES, SADME SPECIAL PUBLICATION

MINERAL DEPOSITS : DEPOSIT INFORMATION

DEPOSIT : 502 LAKE KITTY

BRIEF DESCRIPTION : ANOMOLOUS MOLYBDENUM IN TWO LATERITIC SCREE STRAND
LINES ON THE LAKE.

MINOR COMMODITY : MO

LOCATION :

lat : deg 36 mins 0 secs 21
long : deg 137 mins 1 secs 41

District Council : KINGSCOTE
Hundred : NEWLAND Section : County : CARNARVON

250k map : KINGSCOTE 100k map : 6326 VIVONNE

LOCATION COMMENTS :

reference point : BAR
location method : SCALED OFF 50K MAP
comments : SEE PLAN IN ENV 2023

MINERAL DEPOSITS : OREBODY INFORMATION

DEPOSIT : 502 LAKE KITTY

OREBODY : 502 LAKE KITTY

DESCRIPTION : STRAND LINES OF LATERITE ON SURFACE OF SALT LAKE ADJACENT TO
GRANITE.

SETTING :

form : CONCORDANT
genesis : ALLUVIAL
nature of : DETRITAL
mineralization
controls : IGNEOUS
age of : HOLOCENE
mineralization

MINERALOGY

orebody :
gangue : PISOLITIC LIMONITE PEBBLES
texture :
alteration :
enrichment :

GEOLOGY :

lithology : LATERITE SCREE
formation : ST KILDA FORMATION
age : HOLOCENE
relationship :

lithology : GRANITE
formation : ENCOUNTER BAY GRANITE
age : DELAMERIAN
relationship : UNDERLYING GRANITE IS PRESUMED SOURCE OF MO

RESERVES :

commodity : reserves at

reserves unit grade unit

UNDERLYING GRANITE HAS NO ANOMOLOUS MO RECORDED

MINERAL DEPOSITS : REFERENCES

DEPOSIT : 502 LAKE KITTY

PROGRESS REPORT, SML 520, ASARCO (AUST).
ENV 1607, SADME OPENFILE ENVELOPE.

BOYD BR 1972
FIRST QUARTERLY REPORT, SML 689, AOG MINERALS.
ENV 2023, SADME OPENFILE ENVELOPE.

MINERAL DEPOSITS : DEPOSIT INFORMATION

DEPOSIT : 503 AMERICAN RIVER

BRIEF DESCRIPTION : QUARTZ TOURMALINE VEIN PROSPECTED

MINOR COMMODITY : AU
CU

GEOLOGICAL PROVINCE : KANMANTOO TROUGH

LOCATION

:

lat : deg 35 mins 45 secs 53
long : deg 137 mins 47 secs 37

District Council : KINGSCOTE
Hundred : HAINES Section : 89 County : CARNARVON

250k map : KINGSCOTE 100k map : 6426 KINGSCOTE

LOCATION COMMENTS :

reference point : NOTHING!
location method : SCALED OFF 50K MAP
comments : ROUGH SCALING FROM RB49/88 AND MINING REVIEW.

MINERAL DEPOSITS : OREBODY INFORMATION

DEPOSIT : 503 AMERICAN RIVER

OREBODY : 503 AMERICAN RIVER

DESCRIPTION : QUARTZ TOURMALINE VEIN WITH ABUNDANT FE OXIDES INFILLING PY
BOXWORKS WITH A TRACE OF MALACHITE

SETTING :

form : CONCORDANT
genesis : HYDROTHERMAL
nature of : VEIN
mineralization
controls : STRUCTURE
age of :
mineralization

MINERALOGY

orebody : AU
gangue : QUARTZ TOURMALINE PYRITE
texture : BOXWORKS AFTER PYRITE
alteration : SECONDARY CARBONATES AND LIMONITE AFTER SULPHIDES?
enrichment :

GEOLOGY :

lithology : PHYLLITIC GREYWACKE
formation : TAPPANAPPA FORMATION
age : CAMBRIAN
relationship :

RESERVES :

commodity : AU			reserves at
reserves	unit	grade	unit
3 OZ 7 DWTS PER TONNE RECORDED			

MINERAL DEPOSITS : REFERENCES

DEPOSIT : 503 AMERICAN RIVER

1931

MINING REVIEW 54, SADME, PP 124,125.

THOMSON BP

1959

GOLD LEASE APPLICATION BY CA THOMAS, BALLAST HEAD, K.I.
RB49/88, UNPUBLISHED SADME REPORT.

MINERAL DEPOSITS : DEPOSIT INFORMATION

DEPOSIT : 504 BALLAST HEAD

BRIEF DESCRIPTION : PROSPECT ON QUARTZ TOURMALINE STOCKWORK

MINOR COMMODITY : AU

GEOLOGICAL PROVINCE : KANMANTOO TROUGH

LOCATION :

lat : deg 35 mins 45 secs 33
long : deg 137 mins 48 secs 6

District Council : KINGSCOTE
Hundred : HAINES Section : 90 County : CARNARVON

250k map : KINGSCOTE 100k map : 6426 KINGSCOTE

LOCATION COMMENTS :

reference point : JETTY
location method : SCALED OFF 50K MAP
comments : SEE PLAN IN RB49/88

MINERAL DEPOSITS : OREBODY INFORMATION

DEPOSIT : 504 BALLAST HEAD

OREBODY : 504 BALLAST HEAD

DESCRIPTION : IRREGULAR STOCKWORK OF QUARTZ VEINLETS WITH TOURMALINE ACCESSORY

SETTING :

form : CONCORDANT
genesis : HYDROTHERMAL
nature of : STOCKWORK
mineralization
controls : STRUCTURAL
age of :
mineralization

MINERALOGY

orebody : AU ?TRACE
gangue : QUARTZ TOURMALINE
texture : DISSEMINATED
alteration : LIMONITE/HEMATITE AFTER PYRITE
enrichment :

GEOLOGY :

lithology : LAMINATED GREYWACKES
formation : TAPPINAPPA FORMATION
age : CAMBRIAN
relationship :

RESERVES :

commodity :			reserves at
reserves	unit	grade	unit
ONLY A TRACE OF GOLD REPORTED.			

MINERAL DEPOSITS : REFERENCES

DEPOSIT : 504 BALLAST HEAD

THOMSON BP 1959
GOLD LEASE APPLICATION BY CA THOMAS, BALLAST HEAD, K.I.
RB49/88, UNPUBLISHED SADME REPORT BOOK.

MINERAL DEPOSITS : DEPOSIT INFORMATION

DEPOSIT : 505 BOMB ALLEY

BRIEF DESCRIPTION : GOLD PROSPECT ON PROMINENT QUARTZ VEIN

MINOR COMMODITY : AU

GEOLOGICAL PROVINCE : KANMAMTOO TROUGH

LOCATION :

lat : deg 35 mins 45 secs 2
long : deg 137 mins 27 secs 29

District Council : KINGSCOTE

Hundred : MACGILLIVRAY Section : County : CARNARVON

250k map : KINGSCOTE

100k map : 6326 VIVONNE

LOCATION COMMENTS :

reference point : PIT

location method : SCALED OFF 50K MAP

comments : PIT ON WESTERN END. SEE ALSO SVY 2979 PHOTO 137.

MINERAL DEPOSITS : OREBODY INFORMATION

DEPOSIT : 505 BOMB ALLEY

OREBODY : 505 BOMB ALLEY

DESCRIPTION : FERRUGINISED, SILICA CEMENTED QUARTZ BRECCIA FORMING A DISTINCT
FAULT CONTROLLED VEIN.

SETTING :

form : DISCORDANT
genesis : HYDROTHERMAL
nature of : QUARTZ BRECCIA
mineralization
controls : FAULT
age of :
mineralization

MINERALOGY

orebody : GOLD
gangue : QUARTZ PYRITE
texture : DISSEMINATED
alteration : ISOLATED BOXWORKS AFTER PYRITE
enrichment :

GEOLOGY :

lithology : CLEAVED, LAMINATED SLATEY QUARTIZITE.
formation : KANMANTOO GROUP
age : CAMBRIAN
relationship :

RESERVES :

commodity : reserves at

reserves unit grade unit
NO RECORDS OF TWO PITS (ONE NOW BACKFILLED)

MINERAL DEPOSITS : REFERENCES

DEPOSIT : 505 BOMB ALLEY

MCCALLUM WS 1991
GEOLOGICAL INVESTIGATIONS AND DRILLING, PARNDANA AREA, ...
RB91/23 SADME UNPUBLISHED REPORT BOOK

MINERAL DEPOSITS : DEPOSIT INFORMATION

DEPOSIT : 506 UNNAMED

BRIEF DESCRIPTION : REPORTED GOLD PROSPECT

MINOR COMMODITY : AU

GEOLOGICAL PROVINCE : KANMANTOO TROUGH

LOCATION :

lat : deg 35 mins 45 secs 30
long : deg 137 mins 24 secs 38

District Council : KINGSCOTE
Hundred : MENZIES Section : 42 County : CARNARVON

250k map : KINGSCOTE 100k map : 6326 VIVONNE

LOCATION COMMENTS :

reference point : PIT
location method : SCALED OFF 50K MAP
comments : GENERAL AREA OF BACKFILLED PIT INDICATED BY LAND
OWNER

MINERAL DEPOSITS : OREBODY INFORMATION

DEPOSIT : 506 UNNAMED

OREBODY : 506 UNNAMED

DESCRIPTION : NO INFORMATION, PRESUMABLY SIMILAR TO KOHINOOR

GEOLOGY :

lithology	:	LAMINATED SANDSTONES
formation	:	KANMANTOO GROUP
age	:	CAMBRIAN
relationship	:	

MINERAL DEPOSITS : DEPOSIT INFORMATION

DEPOSIT : 507 WILLOUGHBY

BRIEF DESCRIPTION : SMALL FLAKES OF MOLYBDENITE IN GRANITE INTRUSIVE

MINOR COMMODITY : MO

GEOLOGICAL PROVINCE : ADELAIDE GEOSYNCLINE

LOCATION :

lat : deg 35 mins 50 secs 39
long : deg 138 mins 7 secs 54

District Council : DUDLEY

Hundred : DUDLEY Section : County : CARNARVON

250k map : BARKER

100k map : 6526 JERVIS

LOCATION COMMENTS :

reference point : LIGHTHOUSE

location method : SCALED OFF 50K MAP

comments : OCCURENCE REPORTED NEAR LIGHTHOUSE ON WAVE CUT
PLATFORM

MINERAL DEPOSITS : OREBODY INFORMATION

DEPOSIT : 507 WILLOUGHBY

OREBODY : 507 WILLOUGHBY

DESCRIPTION : SMALL FLAKES OF MOLYBDENITE REPORTED. UNSUBSTANTIATED REPORT OF
A PIT

SETTING :

form : DISCORDANT
genesis : INTRUSIVE
nature of : DISSEMINATED
mineralization
controls :
age of : DELAMERIAN
mineralization

MINERALOGY

orebody : MOLYBDENITE
gangue : QUARTZ FELDSPAR BIOTITE GRANITE
texture : DISSEMINATED
alteration :
enrichment :

GEOLOGY :

lithology : MASSIVE GRANITE
formation : ENCOUNTER BAY GRANITE
age : DELAMERIAN
relationship : NOTE, NO IN MASSIVE GRANITE, NOT YOUNGER VEINS.

lithology : CROSSBEDDED SANDSTONE
formation : MIDDLETON SANDSTONE
age : CAMBRIAN
relationship : HOST TO THE INTRUSIVES

MINERAL DEPOSITS : DEPOSIT INFORMATION

DEPOSIT : 508 21W

BRIEF DESCRIPTION : UNWORKED GYPSUM OCCURENCE IN SALT LAKE

MINOR COMMODITY : GYPSUM

GEOLOGICAL PROVINCE : COASTAL ZONE

LOCATION :

lat : deg 35 mins 52 secs 44
long : deg 137 mins 39 secs 19

District Council : KINGSCOTE

Hundred : HAINES Section : 377 County : CARNARVON

250k map : KINGSCOTE

100k map : 6426 KINGSCOTE

LOCATION COMMENTS :

reference point : CENTROID
location method : SCALED OFF 50K MAP
comments : SEE RB89/55

MINERAL DEPOSITS : OREBODY INFORMATION

DEPOSIT : 508 21W

OREBODY : 508 21W

DESCRIPTION : FINE GRAINED GYPSARENITE MUDS

SETTING :

form : STRATAFORM CONCORDANT
genesis : EVAPORATION
nature of : CRUST
mineralization
controls :
age of : PLEISTOCENE
mineralization

MINERALOGY

orebody : GYPSARENITE
gangue : CALCARENITE
texture : UNCONSOLIDATED MUDS
alteration :
enrichment :

GEOLOGY :

lithology : CALCARENITE
formation : BRIDGEWATER FORMATION
age : PLEISTOCENE
relationship :

RESERVES :

commodity	: GYPSUM	INFERRED	reserves at	1977
reserves	unit	grade	unit	
142000	M**3	85	%	
SUB ECONOMIC IN 1980				

MINERAL DEPOSITS : REFERENCES

DEPOSIT : 508 21W

DUBOWSKI EA, OLLIVER JG AND DOWNIE I 1989
THE GYPSUM INDUSTRY OF KANGAROO ISLAND
RB89/55, UNPUBLISHED SADME REPORT

MINERAL DEPOSITS : DEPOSIT INFORMATION

DEPOSIT : 509 MORRISON BEACH

BRIEF DESCRIPTION : HEAVY MINERAL SANDS IN THREE DISTINCT LITHOFACIES

MAJOR COMMODITY : RUTILE
ZIRCON

GEOLOGICAL PROVINCE : COASTAL ZONE

LOCATION :

lat : deg 35 mins 44 secs 26
long : deg 137 mins 40 secs 34

District Council : KINGSCOTE
Hundred : HAINES Section : County : CARNARVON

250k map : KINGSCOTE 100k map : 6426 KINGSCOTE

LOCATION COMMENTS :

reference point : PLANT
location method : SCALED OFF 50K MAP
comments :

MINERAL DEPOSITS : OREBODY INFORMATION

DEPOSIT : 509 MORRISON BEACH

OREBODY : 509 MORRISON BEACH A

DESCRIPTION : HEAVY MINERAL BEACH SANDS OF PLEISTOCENE SHORELINE, IN PART
OVERLAIN BY 1.5M ALLUVIAL CLAYS

SETTING :

form : STRATAFORM
genesis : ALLUVIAL
nature of : DETRITAL
mineralization
controls :
age of : PLEISTOCENE
mineralization

MINERALOGY

orebody : RUTILE ZIRCON
gangue : QUARTZ SAND KYANITE STAUROLITE OPAQUES
texture :
alteration :
enrichment : MECHANICAL ACTION

GEOLOGY :

lithology : BEACH SANDS
formation : BRIDGEWATER FORMATION
age : PLEISTOCENE
relationship :

lithology : FLUVIAL SANDS
formation :
age : PLEISTOCENE
relationship : IN PART OVERLIES SAND DEPOSIT BODY A

RESERVES :

commodity	: RUTILE	INFERRED	reserves at	1976
reserves	unit	grade	unit	
2050	TON	0.023	%	

commodity	: ZIRCON	INFERRED	reserves at	1976
reserves	unit	grade	unit	
1940	TON	0.022	%	

MINERAL DEPOSITS : OREBODY INFORMATION

DEPOSIT : 509 MORRISON BEACH

OREBODY : 90010 MORRISON BEACH B

DESCRIPTION : MODERN DUNE SANDS REWORKING PLEISTOCENE HEAVY MINERAL DEPOSIT
(A)

SETTING :

form : STRATOFORM
genesis : AEOLIAN
nature of : DETRITAL
mineralization
controls :
age of : HOLOCENE
mineralization

MINERALOGY

orebody : ZIRCON RUTILE
gangue : QUARTZ SAND KYANITE STAUROLITE OPAQUES
texture :
alteration :
enrichment : MECHANICAL

GEOLOGY :

lithology : AEOLIAN SANDS
formation : SEMAPHORE SANDS
age : HOLOCENE
relationship :

RESERVES :

commodity :	ZIRCON	INFERRED	reserves at	1976
reserves	unit	grade	unit	
56000	TON	0.058	%	
.3% HEAVY MINERALS OVER ALL IN 97 MILLION TONNES				

commodity :	RUTILE	INFERRED	reserves at	1976
reserves	unit	grade	unit	
43500	TON	0.045	%	

MINERAL DEPOSITS : OREBODY INFORMATION

DEPOSIT : 509 MORRISON BEACH

OREBODY : 90011 MORRISON BEACH C

DESCRIPTION : MODERN BEACH SANDS INCLUDING TOE AND FOREDUNE

SETTING :

form : CONCORDANT STRATAFORM
genesis : ALLUVIAL
nature of : DETRITAL
mineralization
controls :
age of : HOLOCENE
mineralization

MINERALOGY

orebody : RUTILE ZIRCON
gangue : QUARTZ SAND KYANITE STAUROLITE OPAQUES
texture :
alteration :
enrichment : MECHANICAL

GEOLOGY :

lithology : BEACH SANDS
formation : SEMAPHORE SANDS
age : HOLOCENE
relationship :

RESERVES :

commodity : ZIRCON INFERRED reserves at 1976

reserves unit grade unit
560 TON 0.76 %
1976 FIGS INFER 129000 TONNES OF MINERALIZED SAND

commodity : RUTILE INFERRED reserves at 1976

reserves unit grade unit
530 TON 0.72 TON
1976 FIGURES ESTIMATED BY MORRIS

commodity : ZIRCON INFERRED reserves at 1970

reserves unit grade unit
16430 TON 0.077 %
2 MILLION TONNES OF MINERALISED SAND ESTIMATED

commodity : RUTILE INFERRED reserves at 1970

reserves unit grade unit
1750 TON 0.082 %
1970 ESTIMATION BY MIEZITIS ON DIFFERENT BASIS

MINERAL DEPOSITS : MINE INFORMATION

DEPOSIT : 509 MORRISON BEACH

MINE : 509 MORRISON BEACH C

OREBODY : 90011 MORRISON BEACH C

GENERAL :

working method : OPEN CUT
description of workings : SMALL QUARRY (NOW REHABILITATED) WITH
WET SEPARATION PLANT
mine plan :
discovery history : DISCOVERED IN 1956 BY T AMTMANIS
operating status in 1990 ABANDONED

OWNERSHIP :

name : MINOIL SERVICES
role : OPERATOR
period : 1971 TO 1976

name : R GRASSO PTY LTD
role : LESSEE
period : 1971 TO 1976

PRODUCTION

ZIRCON		CUMULATIVE	1971 TO 1976
amount	190	unit	TONNES
grade		unit	

RUTILE		CUMULATIVE	1971 TO 1976
amount	1200	unit	TONNES
grade		unit	

MINERAL DEPOSITS : REFERENCES

DEPOSIT : 509 MORRISON BEACH

MIEZITIS Y 1970
REPORT ON RUTILE DEPOSITS, KANGAROO ISLAND, SA.
ENV 375, SADME OPENFILE ENVELOPE, GEOTECHNICS (AUST) PTY LTD

MORRIS B.J. 1979
INVESTIGATION INTO HEAVY MINERAL SANDS, MORRISON BEACH, K.I.
MINERAL RESOURCES REVIEW 145, SADME.

MORRIS BJ 1979
INVESTIGATION OF HEAVY MINERAL SANDS, MORRISON BEACH, K.I.
MINERAL RESOURCES REVIEW 145, SADME

MORRIS BJ 1979
INVESTIGATION INTO HEAVY MINERAL SANDS, MORRISON BEACH, K.I.
MINERAL RESOURCES REVIEW 145, SADME.

ROBINSON WB 1975
HEAVY MINERAL SAND MINING OPERATIONS AND RESOURCE POTENTIAL...
DM2200/63, SADME DOCKET

MINERAL DEPOSITS : DEPOSIT INFORMATION

DEPOSIT : 510 BALD HILL
also referred to by the name CUTTLEFISH BAY GOLD
LEASE 472
TIPPINS

BRIEF DESCRIPTION : MINOR WORKINGS ON THREE PARALLEL QUARTZ VEINS 20 M
APART

MINOR COMMODITY : AU

GEOLOGICAL PROVINCE : ADELAIDE GEOSYNCLINE

LOCATION :

lat : deg 35 mins 44 secs 11
long : deg 138 mins 1 secs 2

District Council : DUDLEY
Hundred : DUDLEY Section : 415 County : CARNARVON

250k map : BARKER 100k map : 6526 JERVIS

LOCATION COMMENTS :

reference point : SHAFT
location method : SCALED OFF 50K MAP
comments : SEE AIR PHOTO SVY 2979/PHOTO 123/ 10A

MINERAL DEPOSITS : OREBODY INFORMATION

DEPOSIT : 510 BALD HILL

OREBODY : 510 BALD HILL

DESCRIPTION : SULPHIDES REPORTED ALONG BEDDING PLANES. POSSIBLY REMOBILISED INTO MAIN VEIN WHICH FOLLOWS HINGE OF PARASITIC FOLD ON REGIONAL ANTICLINE

SETTING :

form : DISCORDANT
genesis : HYDROTHERMAL
nature of : VEIN
mineralization
controls : STRUCTURAL?
age of :
mineralization

MINERALOGY

orebody : GOLD
gangue : QUARTZ TOURMALINE PYRITE ARSENOPYRITES PYRRHOTITE
texture : MASSIVE QUARTZ WITH CM SCALE BOXWORKS AFTER PYRITE
alteration :
enrichment :

GEOLOGY :

lithology : SLATEY PHYLLITIC SANDSTONE
formation : STURT TILLITE
age : STURTIAN
relationship :

MINERAL DEPOSITS : MINE INFORMATION

DEPOSIT : 510 BALD HILL

MINE : 510 BALD HILL

OREBODY : 510 BALD HILL

GENERAL :

working method : UNDERGROUND
description of workings : COLLAPSED MAIN SHAFT NOW 5M DEEP UNDERLAY
SHAFT FROM SE. MINOR PITS ALONG STRIKE
mine plan :
discovery history : FIRST PROSPECTED BY TIPPIN IN 1890,
ASSUMED ALL SYNONYMS RELATE TO SAME
DEPOSIT
operating status in 1990 ABANDONED

OWNERSHIP :

name : BALD HILL GOLD MINING CO.
role : OWNER/OPERATOR ?
period : 1896 TO 1898 ?

TENEMENT :

tenement number : LEASE 472 status : EXPIRED

PRODUCTION

AU		ANNUAL		1897
amount	5	unit	TONS	
grade	12	unit	DWTS/TON	

AU		CUMULATIVE	
amount	50	unit	TONS
grade	12	unit	DWTS/TON

MINERAL DEPOSITS : REFERENCES

DEPOSIT : 510 BALD HILL

BROWN HYL 1898
REPORT BY THE GOVERNMENT GEOLOGIST
PARLIAMENTARY PAPERS 36

BROWN HYL 1899
RECORD OF MINES, SADME SPECIAL PUBLICATION, PP 104,129,252

BROWN HYL 1908
RECORD OF MINES, SADME SPECIAL PUBLICATION, PP 201,269.

VON SANDEN AT AND ROCHOW K 1971
BEACH PETROLEUM, REPORT ON SML268
ENV 1807, SADME OPENFILE ENVELOPE

MINERAL DEPOSITS : DEPOSIT INFORMATION

DEPOSIT : 511 KOHINOOR

also referred to by the name BURGESS REEF
KOH-I-NOHR
KOH-I-NOOR

BRIEF DESCRIPTION : SUBSTANTIAL GOLD MINE ASSOCIATED WITH THE CYGNET FAULT
ZONE.

MAJOR COMMODITY : AU

GEOLOGICAL PROVINCE : KANMANTOO TROUGH

LOCATION :

lat : deg 35 mins 45 secs 20
long : deg 137 mins 25 secs 2

District Council : KINGSCOTE
Hundred : MACGILLIVRAY Section : 77 County : CARNARVON

250k map : KINGSCOTE 100k map : 6326 VIVONNE

LOCATION COMMENTS :

reference point : MAIN SHAFT
location method : SCALED OFF 50K MAP
comments :

MINERAL DEPOSITS : OREBODY INFORMATION

DEPOSIT : 511 KOHINOOR

OREBODY : 511 KOHINOOR

DESCRIPTION : GOLD IS RICHEST WHERE QTZ-FE VEINS CUT SHALEY INTERBEDS. GOLD
EXTENDS INTO COUNTRY ROCKS. ALSO ASSOCIATED WITH PYRITE.

SETTING :

form : DISCORDANT
genesis : HYDROTHERMAL
nature of : VEIN
mineralization
controls : FAULT
age of :
mineralization

MINERALOGY

orebody : GOLD
gangue : QUARTZ HEMATITE LIMONITE PYRITE
texture : DISSEMINATED
alteration : PY => LIMONITE
enrichment :

GEOLOGY :

lithology : CLEAVED SCHISTOSE SANDSTONE
formation : KANMANTOO GROUP
age : CAMBRIAN
relationship :

MINERAL DEPOSITS : MINE INFORMATION

DEPOSIT : 511 KOHINOOR

MINE : 511 KOHINOOR

OREBODY : 511 KOHINOOR

GENERAL :

working method : UNDERGROUND
description of workings : 200 FT SHAFT WITH EXTENSIVE UNDERGROUND
DEVELOPMENT. 5 HEAD BATTERY INSTALLED
mine plan : 91-217 TO 219
discovery history : FIRST DISCOVERED AND WORKED BY E. PRIME
IN 1886.
operating status in 1990 ABANDONED

OWNERSHIP :

name : KOHINOOR GOLD MINING COMPANY
role : OWNER/OPERATOR ?
period : 1894 TO 1908 ?

PRODUCTION

AU			1907
amount	10	unit	TONS
grade	3	unit	OZS/TON
AU			1908
amount	4	unit	TONS
grade	1	unit	OZS/TON
AU			1895
amount	10	unit	TONS
grade	2	unit	DWTS/TON
AU			
amount	2	unit	TONS
grade	1	unit	OZS/TON

MINERAL DEPOSITS : REFERENCES

DEPOSIT : 511 KOHINOOR

ARTICLE	1907
SA REGISTER (NEWSPAPER) OCTOBER 1907.	
MINING REVIEW 8, SADME, PP 9,16,22	1908
MINING REVIEW 59, SADME, P58	1934
MINING REVIEW 73, SADME, P31.	1941
MINING REVIEW 91, SADME, P208.	1951
BROWN HYL	1890
RECORD OF MINES, SADME SPECIAL PUBLICATION, PP83,94	
BROWN HYL	1898
REPORT BY THE GOVERNMENT GEOLOGIST PARLIAMENTARY PAPERS 36	
BROWN HYL	1899
RECORD OF MINES, SADME SPECIAL PUBLICATION, PP 112,128,129,178	
BROWN HYL	1908
RECORD OF MINES, SADME SPECIAL PUBLICATION, PP 226-227	
MCCALLUM WS	1991
GEOLOGICAL INVESTIGATIONS AND DRILLING, PARNDANA AREA, ... RB91/23 SADME UNPUBLISHED REPORT BOOK	

MINERAL DEPOSITS : DEPOSIT INFORMATION

DEPOSIT : 512 CYGNET
also referred to by the name TILKAS

BRIEF DESCRIPTION : GOLD AND SULPHIDES ASSOCIATED WITH A SHEAR ZONE.
MAJOR PROSPECT.

MINOR COMMODITY : AU

GEOLOGICAL PROVINCE : KANMANTOO TROUGH

LOCATION

lat : deg 35 mins 44 secs 1
long : deg 137 mins 16 secs 28

District Council : KINGSCOTE
Hundred : CASSINI Section : 25 County : CARNARVON

250k map : KINGSCOTE

100k map : 6326 VIVONNE

LOCATION COMMENTS :

reference point : MAIN SHAFT
location method : GPS
comments :

MINERAL DEPOSITS : OREBODY INFORMATION

DEPOSIT : 512 CYGNET

OREBODY : 512 CYGNET

DESCRIPTION : GOLD ASSOCIATED WITH SULPHIDES IN SILICIFIED SHEAR ZONE.
CHLORITE DISPLAYS SLICKENSIDING - MULTIPLE SHEARING EVENT.

MINERALOGY

orebody	:	GOLD SILVER
gangue	:	QUARTZ PYRITE ARSENOPYRITE
texture	:	BOXWORKS AFTER PYRITE
alteration	:	CHLORITE IN SHEAR ZONE
enrichment	:	

GEOLOGY :

lithology	:	CLEAVED PHYLLITIC SANDSTONE
formation	:	KANMANTOO GROUP
age	:	CAMBRIAN
relationship	:	

MINERAL DEPOSITS : MINE INFORMATION

DEPOSIT : 512 CYGNET

MINE : 512 CYGNET

OREBODY : 512 CYGNET

GENERAL :

working method : UNDERGROUND
description of workings : 2 SHAFTS TO 80 FT AND CROSSCUT DRIVE.
MINOR PROSPECTING PITS. MAINLY INFILLED
mine plan : 91-221
discovery history : APPARENTLY DISCOVERED AND FIRST WORKED BY
TILKA, PRE 1898.
operating status in 1990 ABANDONED

OWNERSHIP :

name : TAYLOR H.G.
role : OPERATOR
period : 1906

name : MELVIN D.
role : OWNER
period : 1907

PRODUCTION

GOLD		ANNUAL	1907
amount	4	unit	TONS
grade	6	unit	DWTS/TON

MINERAL DEPOSITS : REFERENCES

DEPOSIT : 512 CYGNET

CLACKLINE LTD, EL 1378
ENV 6814, SADME OPENFILE ENVELOPE,

MINING REVIEW 59, SADME , P58 1934

MINING REVIEW 91, SADME, PP207-208. 1951

BROWN HYL 1898
REPORT BY THE GOVERNMENT GEOLOGIST
PARLIAMENTARY PAPERS 36

BROWN HYL 1899
RECORD OF MINES, SADME SPECIAL PUBLICATION P164

BROWN HYL 1908
RECORD OF MINES, SADME SPECIAL PUBLICATION PP213-214

MCCALLUM WS 1991
GEOLOGICAL INVESTIGATIONS AND DRILLING, PARNDANA AREA, ...
RB91/23 SADME UNPUBLISHED REPORT BOOK

MELVIN D 1907
LETTER TO THE EDITOR 3/9/1907
SA REGISTER (NEWSPAPER) OCTOBER 1907

MINERAL DEPOSITS : DEPOSIT INFORMATION

DEPOSIT : 513 RAINBOW END

also referred to by the name RAINBOWS END

BRIEF DESCRIPTION : FE-QTZ VEINING ASSOCIATED WITH MAJOR BRECCIA ZONE.
SUBSTANTIAL MINING

MINOR COMMODITY : AU

GEOLOGICAL PROVINCE : KANMANTOO TROUGH

LOCATION :

lat : deg 35 mins 44 secs 29
long : deg 137 mins 18 secs 50

District Council : KINGSCOTE

Hundred : CASSINI Section : 11 County : CARNARVON

250k map : KINGSCOTE

100k map : 6326 VIVONNE

LOCATION COMMENTS :

reference point : MAIN SHAFT

location method : SCALED OFF 50K MAP

comments :

MINERAL DEPOSITS : OREBODY INFORMATION

DEPOSIT : 513 RAINBOW END

OREBODY : 513 RAINBOW END

DESCRIPTION : SECONDARY QUARTZ VEINING IN A FERRUGINISED CHLORITISED FAULT
BRECCIA. GOLD REPORTED ASSOCIATED WITH THE HEMATITE.

SETTING :

form : CONCORDANT
genesis : HYDROTHERMAL
nature of : BRECCIA VEIN
mineralization
controls : FAULT
age of :
mineralization

MINERALOGY

orebody : GOLD
gangue : QUARTZ HEMATITE
texture : DISSEMINATED
alteration : INTENSE CHLORITE DEVELOPMENT WITH SLICKENSIDING
enrichment :

GEOLOGY :

lithology : SANDY PHYLLITIC SLATES
formation : KANMANTOO GROUP
age : CAMBRIAN
relationship :

MINERAL DEPOSITS : MINE INFORMATION

DEPOSIT : 513 RAINBOW END

MINE : 513 RAINBOW END

OREBODY : 513 RAINBOW END

GENERAL :

working method : OPENCUT/UNDERGROUND
description of workings : ONE SHAFT (3M TO WATER) PLUS SEVERAL
MAJOR CUTS.
mine plan : 91-220
discovery history : DISCOVERED IN 1933
operating status in 1990 ABANDONED

OWNERSHIP :

name : UNKNOWN
role :
period : 1933 TO 1935

name : CHAPMAN, BROWNE, BARRON AND BARRON
role : OWNER OPERATOR
period : 1950

TENEMENT :

tenement number : LEASE 1927 status : EXPIRED

PRODUCTION

AU			1933
amount	1	unit	TON
grade	8	unit	DWTS/TON
AU			1941
amount	4	unit	TONS
grade	3	unit	DWTS/TON
AU			1949
amount	3	unit	TONS
grade	4	unit	DWTS/TON

MINERAL DEPOSITS : REFERENCES

DEPOSIT : 513 RAINBOW END

MINING REVIEW 73, SADME, P33	1941
MINING REVIEW 91, SADME, PP207-209.	1951
MCCALLUM WS GEOLOGICAL INVESTIGATIONS AND DRILLING, PARNDANA AREA, ... RB91/23 SADME UNPUBLISHED REPORT BOOK	1991
PEARSON JL MINING REVIEW 63, SADME, P 62	1936
WINTON LJ MINING REVIEW 59, SADME, P58.	1934

MINERAL DEPOSITS : DEPOSIT INFORMATION

DEPOSIT : 514 WESTERN RIVER EAST

BRIEF DESCRIPTION : SILVER LEAD SULPHIDE PROSPECT ASSOCIATED WITH
BRECCIATED QUARTZ VEIN.

MINOR COMMODITY : AG
PB

GEOLOGICAL PROVINCE : KANMANTOO TROUGH

LOCATION

lat : deg 35 mins 40 secs 50
long : deg 136 mins 38 secs 45

District Council : KINGSCOTE
Hundred : GOSSE Section : County : CARNARVON

250k map : KINGSCOTE 100k map : 6226 BORDA

LOCATION COMMENTS :

reference point : SHAFT
location method : GPS
comments :

MINERAL DEPOSITS : OREBODY INFORMATION

DEPOSIT : 514 WESTERN RIVER EAST

OREBODY : 514 WESTERN RIVER EAST

DESCRIPTION : MINOR QUARTZ VEIN, BRECCIATED AND RE-SILICIFIED. NO SULPHIDES
SEEN IN 1990

SETTING :

form : CONCORDANT
genesis : MESOTHERMAL
nature of : VEIN BRECCIA
mineralization
controls :
age of :
mineralization

MINERALOGY

orebody : GALENA SILVER
gangue : QUARTZ
texture : BRECCIATED AND RE-SILICIFIED
alteration :
enrichment :

GEOLOGY :

lithology : LAMINATED CLEAVED SILTSTONE
formation : KANMANTOO GROUP
age : CAMBRIAN
relationship :

MINERAL DEPOSITS : MINE INFORMATION

DEPOSIT : 514 WESTERN RIVER EAST

MINE : 514 WESTERN RIVER EAST

OREBODY : 514 WESTERN RIVER EAST

GENERAL :

working method : UNDERGROUND
description of workings : SMALL PIT / COLLAPSED SHAFT
mine plan : 91-226 TO 228
discovery history :
operating status in 1990 ABANDONDED

MINERAL DEPOSITS : REFERENCES

DEPOSIT : 514 WESTERN RIVER EAST

MCCALLUM WS 1991
GEOLOGICAL INVESTIGATIONS AND DRILLING, PARNDANA AREA, ...
RB91/23 SADME UNPUBLISHED REPORT BOOK

SPRIGG RC 1954
KINGSCOTE
1 INCH TO 4 MILES GEOLOGICAL ATLAS SERIES.

MINERAL DEPOSITS : DEPOSIT INFORMATION

DEPOSIT : 515 WESTERN RIVER

BRIEF DESCRIPTION : MAJOR QUARTZ LODGE WITH CERUSSITE REPLACING GALENA.
EXTENSIVE WORKINGS.

MAJOR COMMODITY : PB

MINOR COMMODITY : AG
CU

GEOLOGICAL PROVINCE : KANMANTOO TROUGH

LOCATION :

lat : deg 35 mins 41 secs 3
long : deg 136 mins 57 secs 45

District Council : KINGSCOTE
Hundred : GOSSE Section : County : CARNARVON

250k map : KINGSCOTE 100k map : 6226 BORDA

LOCATION COMMENTS :

reference point : OPEN CUT
location method : GPS
comments :

MINERAL DEPOSITS : OREBODY INFORMATION

DEPOSIT : 515 WESTERN RIVER

OREBODY : 515 WESTERN RIVER

DESCRIPTION : VUGGY QUARTZ VEIN WITH SECONDARY QUARTZ INFILLING, CERUSSITE IN BOXWORKS AFTER GALENA, MINOR SECONDARY CU EFFLORESCENCE.

SETTING :

form : CONCORDANT
genesis : MESOTHERMAL
nature of : VEIN
mineralization
controls : FAULT
age of :
mineralization

MINERALOGY

orebody : GALENA
gangue : QUARTZ
texture : VUGGY BOXWORKS
alteration : KAOLINISATION OF HOST, MAJOR SECONDARY CARBONATES
enrichment :

GEOLOGY :

lithology : LAMINATED CLEAVED SILTSTONE
formation : KANMANTOO GROUP
age : CAMBRIAN
relationship :

MINERAL DEPOSITS : MINE INFORMATION

DEPOSIT : 515 WESTERN RIVER

MINE : 515 WESTERN RIVER

OREBODY : 515 WESTERN RIVER

GENERAL :

working method : OPENCUT/UNDERGROUND
description of workings : MAJOR STOPE OPEN TO SURFACE, TWO DEEP
SHAFTS AND THREE ACCESSIBLE ADITS.
mine plan : 91-226 TO 228
discovery history :
operating status in 1990 ABANDONED

MINERAL DEPOSITS : REFERENCES

DEPOSIT : 515 WESTERN RIVER

MINING REVIEW 8, SADME, P22. 1908

BROWN HYL 1898
REPORT BY THE GOVERNMENT GEOLOGIST
PARLIAMENTARY PAPERS 36

BROWN HYL 1908
RECORD OF MINES, SADME SPECIAL PUBLICATION, P191.

MCCALLUM WS 1991
GEOLOGICAL INVESTIGATIONS AND DRILLING, PARNDANA AREA, ...
RB91/23 SADME UNPUBLISHED REPORT BOOK

MINERAL DEPOSITS : DEPOSIT INFORMATION

DEPOSIT : 516 WESTERN RIVER WEST

BRIEF DESCRIPTION : SILVER LEAD PROSPECT.

MINOR COMMODITY : AG
PB

GEOLOGICAL PROVINCE : KANMANTOO TROUGH

LOCATION :

lat : deg 35 mins 41 secs 13
long : deg 136 mins 56 secs 31

District Council : KINGSCOTE
Hundred : GOSSE Section : County : CARNARVON

250k map : KINGSCOTE 100k map : 6226 BORDA

LOCATION COMMENTS :

reference point : SYMBOL
location method : SCALED OFF 250K MAP
comments : LOCATED ON SPRIGG 1954 BUT NOT FOUND ON GROUND
1990

MINERAL DEPOSITS : OREBODY INFORMATION

DEPOSIT : 516 WESTERN RIVER WEST

OREBODY : 516 WESTERN RIVER WEST

DESCRIPTION : NO INFORMATION AS PROSPECT HAS NOT BEEN RE-LOCATED

MINERAL DEPOSITS : REFERENCES

DEPOSIT : 516 WESTERN RIVER WEST

MCCALLUM WS 1991
GEOLOGICAL INVESTIGATION AND DRILLING, PARNDANA AREA, ...
RB91/23 SADME UNPUBLISHED REPORT BOOK

SPRIGG RC 1954
KINGSCOTE
1 INCH TO 4 MILES GEOLOGICAL ATLAS SERIES

MINERAL DEPOSITS : DEPOSIT INFORMATION

DEPOSIT : 517 SNUG COVE

BRIEF DESCRIPTION : MINOR PROSPECT ON MINOR QUARTZ VEINING

MINOR COMMODITY : AG
PB
ZN

GEOLOGICAL PROVINCE : KANMANTOO TROUGH

LOCATION :

lat : deg 35 mins 41 secs 59
long : deg 136 mins 50 secs 44

District Council : KINGSCOTE
Hundred : GOSSE Section : County : CARNARVON

250k map : KINGSCOTE 100k map : 6226 BORDA

LOCATION COMMENTS :

reference point : SHAFT
location method : SCALED OF 50K MAP
comments :

MINERAL DEPOSITS : OREBODY INFORMATION

DEPOSIT : 517 SNUG COVE

OREBODY : 517 SNUG COVE

DESCRIPTION : MINOR SECONDARY QUARTZ VEINS WITH GEODES OF TERMINATED CRYSTALS.
NO MINERALISATION SEEN IN 1990.

SETTING :

form : CONCORDANT
genesis : MESOTHERMAL
nature of : VEIN
mineralization
controls : FAULT?
age of :
mineralization

MINERALOGY

orebody : ? CERUSSITE
gangue : QUARTZ
texture :
alteration :
enrichment :

GEOLOGY :

lithology : MUSCOVITE SLATE
formation : KANMANTOOO GROUP
age : CAMBRIAN
relationship :

MINERAL DEPOSITS : MINE INFORMATION

DEPOSIT : 517 SNUG COVE

MINE : 517 SNUG COVE

OREBODY : 517 SNUG COVE

GENERAL :

working method : UNDERGROUND
description of workings : UNDERLAY SHAFT 35 FT DEEP, NOW PARTIALY
INFILLED
mine plan :
discovery history :
operating status in 1990 ABANDONED

MINERAL DEPOSITS : REFERENCES

DEPOSIT : 517 SNUG COVE .

BROWN HYL 1908
RECORD OF MINES, SADME SPECIAL PUBLICATION, P189

MCCALLUM WS 1991
GEOLOGICAL INVESTIGATIONS AND DRILLING, PARNDANA AREA, ...
RB91/23 SADME UNPUBLISHED REPORT BOOK

MINERAL DEPOSITS : DEPOSIT INFORMATION

DEPOSIT : 518 DAWS DIGGINGS
also referred to by the name DAWES DIGGINGS

PART OF MINING FIELD : DAWS DIGGINGS

BRIEF DESCRIPTION : NUMEROUS SMALL ALLUVIAL WORKINGS FOR GOLD, HEAVY
MINERALS AND GEMS

MINOR COMMODITY : AMETHYST
AU
CYANITE
MONAZITE
RUBY
RUTILE
SAPPHIRE
TOPAZ
ZIRCON

GEOLOGICAL PROVINCE :

LOCATION :

lat : deg 35 mins 49 secs 30
long : deg 137 mins 15 secs 29

District Council : KINGSCOTE
Hundred : SEDDON Section : 29 County : CARNARVON

250k map : KINGSCOTE 100k map : 6326 VIVONNE

LOCATION COMMENTS :

reference point : MINE SYMBL
location method : SCALED OFF 50K MAP
comments :

MINERAL DEPOSITS : OREBODY INFORMATION

DEPOSIT : 518 DAWS DIGGINGS

OREBODY : 518 DAWS DIGGINGS

DESCRIPTION : MINOR GOLD GEMS AND HEAVY MINERALS IN ALLUVIAL GRAVELS.
REWORKED FROM TERTIARY LATERITE SURFACE PROBABLY FROM DELAMERIAN
PEGMATITES.

SETTING :

form : STRATA BOUND
genesis : ALLUVIAL
nature of : DETRITAL
mineralization
controls : IGNEOUS
age of : QUATERNARY
mineralization

MINERALOGY

orebody : GOLD GEMS RARE EARTHS HEAVY MINERALS
gangue : ALLUVIUM
texture : DISSEMINATED
alteration :
enrichment : MECHANICAL

GEOLOGY :

lithology : ALLUVIUM
formation :
age : QUATERNARY
relationship :

lithology : PEGMATITE
formation :
age : DELAMERIAN
relationship : PEGMATITES IN THE AREA ARE PROBABLE SOURCES

lithology : LATERITE DURICRUST
formation :
age : TERTIARY
relationship : EVIDENCE THAT MINERALS ARE REWORKED FROM HERE

MINERAL DEPOSITS : MINE INFORMATION

DEPOSIT : 518 DAWS DIGGINGS

MINE : 518 DAWS DIGGINGS

OREBODY : 518 DAWS DIGGINGS

GENERAL :

working method : ALLUVIAL
description of workings : NUMEROUS SMALL WORKING IN ELEANOR RIVER
GRAVELS, NOW MOSTLY GROWN OVER.
mine plan :
discovery history : FIRST REPORTED 1898
operating status in 1990 ABANDONDED

MINERAL DEPOSITS : REFERENCES

DEPOSIT : 518 DAWS DIGGINGS

MINING REVIEW 6, SADME, P15 1907

BROWN HYL 1898
REPORT BY THE GOVERNMENT GEOLOGIST
PARLIAMENTARY PAPERS 36

BROWN HYL 1899
RECORD OF MINES, SADME SPECIAL PUBLICATION, P178.

BROWN HYL 1908
RECORD OF MINES, SADME SPECIAL PUBLICATION, P214.

MCCALLUM WS 1991
GEOLOGICAL INVESTIGATIONS AND DRILLING, PARNDANA AREA, ...
RB91/23 SADME UNPUBLISHED REPORT BOOK

MINERAL DEPOSITS : DEPOSIT INFORMATION

DEPOSIT : 519 LITTLE SAHARA

BRIEF DESCRIPTION : EXTENSIVE DUNES OF LIME SAND WITH POTENTIAL FOR
AGRICULTURAL USES

MAJOR COMMODITY : LIME SAND

GEOLOGICAL PROVINCE : COASTAL ZONE

LOCATION :

lat : deg 35 mins 57 secs 4
long : deg 137 mins 14 secs 54

District Council : KINGSCOTE

Hundred : SEDDON Section : 3 County : CARNARVON

250k map : KINGSCOTE 100k map : 6326 VIVONNE

LOCATION COMMENTS :

reference point :
location method : SCALED OFF 50K MAP
comments : SEE PLAN IN MIN RES REV 156.

MINERAL DEPOSITS : OREBODY INFORMATION

DEPOSIT : 519 LITTLE SAHARA

OREBODY : 519 LITTLE SAHARA

DESCRIPTION : 70% CACO₃, 25% SIO₂, MINOR FELDSPAR.

MINERALOGY

orebody : LIME SAND
gangue : SILICA SAND
texture :
alteration :
enrichment :

GEOLOGY :

lithology : AEOLIANITIC LIME SANDS
formation : SEMAPHORE SAND
age : HOLOCENE
relationship :

RESERVES :

commodity : LIME SAND	INDICATED	reserves at	1982
reserves	unit	grade	unit
3200000	TONS	70	%

commodity : LIME SAND	INFERRED	reserves at	1982
reserves	unit	grade	unit
63000000	TONS	70	%
INFERRED RESERVES IF PIT EXTENDED INTO SECTION 55			

MINERAL DEPOSITS : MINE INFORMATION

DEPOSIT : 519 LITTLE SAHARA

MINE : 519 LITTLE SAHARA

OREBODY : 519 LITTLE SAHARA

GENERAL :

working method : OPENCUT
description of workings : REMOVAL OF DUNE SANDS
mine plan :
discovery history : PROSPECTED BY SADME, 1986
operating status in 1990 PART TIME QUARRY

OWNERSHIP :

name : OSIER PL
role : OWNER/OPERATOR
period : 1988 TO

TENEMENT :

tenement number : ML 5497 status : CURRENT

PRODUCTION

LIME SAND	ANNUAL	1982
amount 50000	unit TONNES	
grade	unit	

LIME SAND	ANNUAL	1988
amount 50000	unit TONNES	
grade	unit	

MINERAL DEPOSITS : REFERENCES

DEPOSIT : 519 LITTLE SAHARA

SCOTT DC AND SHEPHERD AM 1986
GEOLOGICAL INVESTIGATION OF LIME SAND DEPOSITS OF K.I.
RB86/80, SADME UNPUBLISHED REPORT.

SCOTT DC AND SHEPHERD AM 1988
LIME SAND DEPOSIT AT LITTLE SAHARA, KI.
MINERAL RESOURCES REVIEW 156, SADME PP94-95.

MINERAL DEPOSITS : DEPOSIT INFORMATION

DEPOSIT : 520 MACGILLIVRAY

BRIEF DESCRIPTION : QUARRY ON SE TRENDING SAND DUNE. NOTE ABORIGINAL SITE
BORDERS PIT.

MAJOR COMMODITY : CONSTRUCTION SAND
FILLING SAND
GRAVEL
PLASTER SAND

MINOR COMMODITY : GARDEN SAND

LOCATION :

lat : deg 35 mins 48 secs 37
long : deg 137 mins 32 secs 14

District Council : KINGSCOTE

Hundred : MACGILLIVRAY Section : 91 County : CARNARVON

250k map : KINGSCOTE

100k map : 6426 KINGSCOTE

LOCATION COMMENTS :

reference point :

location method : SCALED OFF 50K MAP

comments : SEE MIN RES REV 154 FOR PLAN

MINERAL DEPOSITS : OREBODY INFORMATION

DEPOSIT : 520 MACGILLIVRAY

OREBODY : 520 MACGILLIVRAY

DESCRIPTION : SAND DUNE OF VARIOUS GRAIN SIZES

MINERALOGY

orebody : SAND
gangue :
texture :
alteration :
enrichment :

GEOLOGY :

lithology : AEOLIAN SAND
formation : BRIDGEWATER FORMATION ?
age : PLEISTOCENE
relationship :

RESERVES :

commodity : FILLING SAND INDICATED reserves at 1982

reserves unit grade unit
50000 TON

commodity : GARDEN SAND INDICATED reserves at 1982

reserves unit grade unit
7000 TON

commodity : PLASTER SAND INDICATED reserves at 1982

reserves unit grade unit
22000 TON

commodity : CONSTRUCTION INDICATED reserves at 1982

reserves unit grade unit
111000 TON

commodity : GRAVEL INDICATED reserves at 1982

reserves unit grade unit
16000 TON

commodity : FILLING SAND INFERRED reserves at 1982

reserves unit grade unit
169000 TON

INFERRED RESERVES OUTSIDE CURRENT EML

commodity : GARDEN SAND	INFERRED	reserves at	1982
reserves	unit	grade	unit
134000	TON		
INFERRED RESERVES OUTSIDE CURRENT EML			

commodity : PLASTER SAND	INFERRED	reserves at	1982
reserves	unit	grade	unit
44000	TON		
INFERRED RESERVES OUTSIDE CURRENT EML			

commodity : CONSTRUCTION	INFERRED	reserves at	1982
reserves	unit	grade	unit
274000	TON		
INFERRED RESERVES OUTSIDE CURRENT EML			

commodity : GRAVEL	INFERRED	reserves at	1982
reserves	unit	grade	unit
3000	TON		
INFERRED RESERVES OUTSIDE CURRENT EML			

MINERAL DEPOSITS : MINE INFORMATION

DEPOSIT : 520 MACGILLIVRAY

MINE : 520 MACGILLIVRAY

OREBODY : 520 MACGILLIVRAY

GENERAL :

working method : OPENCUT
description of workings : EXTENSIVE MINING OF DUNE SANDS
mine plan : 82-231
discovery history :
operating status in 1990 OPERATING

OWNERSHIP :

name : DC OF KINGSCOTE
role : OWNER/OPERATOR
period : 1957 TO

TENEMENT :

tenement number : EML 4832 status : CURRENT
tenement number : MC 1117 status : OPERATING

PRODUCTION

CONSTRUCION SAND	CUMULATIVE	1950 TO 1982
amount 142000	unit TONNES	
grade	unit	

CONSTRUCTION SAND	ANNUAL	1982
amount 6000	unit TONNES	
grade	unit	

MINERAL DEPOSITS : REFERENCES

DEPOSIT : 520 MACGILLIVRAY

JOHNSON PD 1982
MACGILLIVRAY SAND DEPOSIT, KANGAROO ISLAND.
RB82/79, SADME UNPUBLISHED REPORT BOOK.

JOHNSON PD AND CRETTENDEN PP 1984
CONSTRUCTION MATERIAL RESOURCES OF KANGAROO ISLAND.
MINERAL RESOURCES REVIEW 154, SADME, PP5-21

MINERAL DEPOSITS : DEPOSIT INFORMATION

DEPOSIT : 521 DOVER FARMS

BRIEF DESCRIPTION : COASTAL DUNE WORKED FOR FILLING AND TOP DRESSING SAND

MINOR COMMODITY : FILLING SAND
TOP DRESSING SAND

GEOLOGICAL PROVINCE : COASTAL ZONE

LOCATION :

lat : deg 35 mins 38 secs 35
long : deg 137 mins 36 secs 2

District Council : KINGSCOTE
Hundred : MENZIES Section : 56 County : CARNARVON

250k map : KINGSCOTE 100k map : 6426 KINGSCOTE

LOCATION COMMENTS :

reference point : PIT
location method : SCALED OFF 50K MAP
comments : SEE MIN RES REV 154 FOR MINE PLAN

MINERAL DEPOSITS : OREBODY INFORMATION

DEPOSIT : 521 DOVER FARMS

OREBODY : 521 DOVER FARMS

MINERALOGY

orebody : QUARTZ SAND
gangue :
texture :
alteration :
enrichment :

GEOLOGY :

lithology : AEOLIANITE
formation : BRIDGEWATER FM
age : PLEISTOCENE
relationship :

RESERVES :

commodity : FILLING SAND INFERRED reserves at 1982

reserves unit grade unit
4500 TON
RESERVES AREA LIMITED BY COASTAL ZONE BOUNDARY

MINERAL DEPOSITS : MINE INFORMATION

DEPOSIT : 521 DOVER FARMS

MINE : 521 DOVER FARM

OREBODY : 521 DOVER FARMS

GENERAL :

working method : OPENCUT
description of workings : SMALL OPERATION QUARRYING COASTAL DUNE
mine plan : 84-71
discovery history :
operating status in 1982 PART TIME QUARRY

OWNERSHIP :

name : DOVER FARMS PTY LTD
role : OWNER/OPERATOR
period : 1979 TO

TENEMENT :

tenement number : EML 4788 status : CURRENT

PRODUCTION

SAND		CUMULATIVE	1979 TO 1982
amount	2660	unit	TONNES
grade		unit	

MINERAL DEPOSITS : REFERENCES

DEPOSIT : 521 DOVER FARMS

CRETENDEN PP 1981
DOVER FARMS PTY LTD FILLING SAND DEPOSIT, KANGAROO ISLAND.
RB81/115, SADME UNPUBLISHED REPORT.

JOHNSON PD AND CRETENDEN PP 1984
CONSTRUCTION MATERIAL RESOURCES OF KANGAROO ISLAND.
MINERAL RESOURCES REVIEW 154, SADME PP5-21.

MINERAL DEPOSITS : DEPOSIT INFORMATION

DEPOSIT : 522 FREESTONE HILL

BRIEF DESCRIPTION : SMALL FLAGSTONE QUARRY

MINOR COMMODITY : FLAGSTONE

GEOLOGICAL PROVINCE : KANMANTOO TROUGH

LOCATION :

lat : deg 35 mins 36 secs 18
long : deg 137 mins 24 secs 46

District Council : KINGSCOTE
Hundred : MENZIES Section : 324 County : CARNARVON

250k map : KINGSCOTE 100k map : 6326 VIVONNE

LOCATION COMMENTS :

reference point :
location method : SCALED OFF 50K MAP
comments : SEE MIN RES REV 154 FOR MINE PLAN

MINERAL DEPOSITS : OREBODY INFORMATION

DEPOSIT : 522 FREESTONE HILL

OREBODY : 522 FREESTONE HILL

DESCRIPTION : TWO JOINT SETS AT RIGHT ANGLES PLUS GOOD BEDDING PARTINGS

MINERALOGY

orebody : METASILTSTONE
gangue :
texture :
alteration :
enrichment :

GEOLOGY :

lithology : GREY-BROWN METASILTSTONE
formation : SMITH BAY SHALE
age : EARLY CAMBRIAN
relationship :

RESERVES :

commodity : reserves at

reserves unit grade unit
SUBSTANTIAL RESERVES TO 16M DEPTH ON OPPOSITE BANK

MINERAL DEPOSITS : MINE INFORMATION

DEPOSIT : 522 FREESTONE HILL

MINE : 522 FREESTONE HILL

OREBODY : 522 FREESTONE HILL

GENERAL :

working method : OPENCUT
description of workings : SMALLSCALE OPERATION ON OUTCROP
mine plan : 82-145
discovery history :
operating status in 1990 PART TIME QUARRY

OWNERSHIP :

name : HURST MR AND ED
role : OWNER/OPERATOR
period :

TENEMENT :

tenement number : EML 5225 status : CURRENT

PRODUCTION

FLAGSTONE		CUMULATIVE	TO 1982
amount	200	unit	CU. M.
grade		unit	

MINERAL DEPOSITS : REFERENCES

DEPOSIT : 522 FREESTONE HILL

JOHNSON PD 1982
FREESTONE HILL FLAGSTONE QUARRY, KANGAROO ISLAND.
RB82/28, SADME UNPUBLISHED REPORT BOOK.

JOHNSON PD AND CRETTENDEN PP 1984
CONSTRUCTION MATERIAL RESOURCES OF KANGAROO ISLAND.
MINERAL RESOURCES REVIEW 154, SADME, PP 5-21.

MINERAL DEPOSITS : DEPOSIT INFORMATION

DEPOSIT : 523 CHAPMAN

BRIEF DESCRIPTION : MAJOR AGGREGATE QUARRY ON BASALT OUTCROP

MAJOR COMMODITY : AGGREGATE

LOCATION :

lat : deg 35 mins 40 secs 18
long : deg 137 mins 30 secs 58

District Council : KINGSCOTE
Hundred : MENZIES Section : 52 County : CARNARVON

250k map : KINGSCOTE 100k map : 6426 KINGSCOTE

LOCATION COMMENTS :

reference point :
location method : SCALED OFF 50K MAP
comments : SEE MIN RES REV 154 FOR LOCALITY PLAN

MINERAL DEPOSITS : OREBODY INFORMATION

DEPOSIT : 523 CHAPMAN

OREBODY : 523 CHAPMAN

DESCRIPTION : CLOSE JOINTING ALLOWS QUARRYING WITHOUT EXPLOSIVES OR CRUSHING.

MINERALOGY

orebody : BASALT
gangue :
texture : WELL JOINTED
alteration :
enrichment :

GEOLOGY :

lithology : BASALT
formation : WISANGER BASALT
age : JURASSIC
relationship :

RESERVES :

commodity	: AGGREGATE	INFERRED	reserves at	1982
reserves	unit	grade	unit	
150000	TON			
19000 CU.M WEATHERED, 37000 CU.M FRESH, SG = 2.7				

MINERAL DEPOSITS : MINE INFORMATION

DEPOSIT : 523 CHAPMAN

MINE : 523 CHAPMAN

OREBODY : 523 CHAPMAN

GENERAL :

working method : OPENCUT
description of workings : MAJOR QUARRY
mine plan : 81-605
discovery history :
operating status in 1990 PART TIME QUARRY

OWNERSHIP :

name : CHAPMAN LF AND PF
role : OWNER
period : 1953 TO

name : LINKE CONTRACTORS
role : OPERATOR
period : TO 1990

TENEMENT :

tenement number : EML 2983 status : CURRENT

PRODUCTION

AGGREGATE		CUMULATIVE	1953 TO 1981
amount	23258	unit	TONNES
grade		unit	

AGGREGATE		ANNUAL	1982
amount	1000	unit	TONNES
grade		unit	

MINERAL DEPOSITS : REFERENCES

DEPOSIT : 523 CHAPMAN

JOHNSON PD 1982
THE GEOLOGY OF CHAPMAN BASALT QUARRY NEAR KINGSCOTE, K.I.
RB82/18, SADME UNPUBLISHED REPORT BOOK

JOHNSON PD 1982
THE BLUFF BASALT QUARRY, KANGAROO ISLAND.
RB82/29, SADME UNPUBLISHED REPORT BOOK.

JOHNSON PD AND CRETTENDEN PP 1984
CONSTRUCTION MATERIAL RESOURCES OF KANGAROO ISLAND.
MINERAL RESOURCES REVIEW 154, SADME, PP 5-21.

MINERAL DEPOSITS : DEPOSIT INFORMATION

DEPOSIT : 524 THE BLUFF

BRIEF DESCRIPTION : COUNCIL QUARRY FOR ROAD METAL AND SAND

MAJOR COMMODITY : AGGREGATE
SAND

LOCATION :

lat : deg 35 mins 38 secs 18
long : deg 137 mins 37 secs 3

District Council : KINGSCOTE
Hundred : MENZIES Section : 398 County : CARNARVON

250k map : KINGSCOTE 100k map : 6426 KINGSCOTE

LOCATION COMMENTS :

reference point :
location method : SCALED OFF 50K MAP
comments : MINE STRETCHES ONTO SECTION 397 ALSO

MINERAL DEPOSITS : OREBODY INFORMATION

DEPOSIT : 524 THE BLUFF

OREBODY : 524 THE BLUFF

DESCRIPTION : BASALT FLOW

MINERALOGY

orebody : BASALT
gangue :
texture : CLOSELY JOINTED
alteration :
enrichment :

GEOLOGY :

lithology : BASALT
formation : WISANGER BASALT
age : JURASIC
relationship :

RESERVES :

commodity	: AGGREGATE	INDICATED	reserves at	1982
reserves	unit	grade	unit	
373000	TON			
IF QUARRY DEVELOPMENT RESTRICTED TO SECTION 379				

commodity	: AGGREGATE	INFERRED	reserves at	1982
reserves	unit	grade	unit	
980000	TON			
IF QUARRY DEVELOPMENT EXTENDS INTO SECTIONS 54,55				

MINERAL DEPOSITS : OREBODY INFORMATION

DEPOSIT : 524 THE BLUFF

OREBODY : 9008 THE BLUFF

DESCRIPTION : IDEAL FINE QUARRY AGGREGATE, FINENESS MODULUS 2.34, SIZE WITHIN
AS1465

MINERALOGY

orebody : QUARTZ SAND
gangue :
texture :
alteration : KAOLINISED
enrichment :

GEOLOGY :

lithology : FLUVIATILE SANDSTONE
formation :
age : JURASSIC
relationship : UNDERLIES BASALT

MINERAL DEPOSITS : MINE INFORMATION

DEPOSIT : 524 THE BLUFF

MINE : 524 THE BLUFF

OREBODY : 524 THE BLUFF

GENERAL :

working method : OPENCUT
description of workings : MAJOR QUARRYING OPERATION
mine plan : 82-150
discovery history :
operating status in 1990 OPERATING

OWNERSHIP :

name : DC OF KINGSCOTE
role : OWNER/OPERATOR
period : 1950 TO

TENEMENT :

tenement number : EML 2983 status : CURRENT

PRODUCTION

AGGREGATE		CUMULATIVE	TO 1980
amount	74689	unit	TONNES
grade		unit	

AGGREGATE		ANNUAL	1982
amount	3000	unit	TONNES
grade		unit	

MINERAL DEPOSITS : REFERENCES

DEPOSIT : 524 THE BLUFF

JOHNSON PD 1982
THE BLUFF BASALT QUARRY, KANGAROO ISLAND.
RB82/29, SADME UNPUBLISHED REPORT BOOK

JOHNSON PD AND CRETENDEN PP 1984
CONSTRUCTION MATERIAL RESOURCES OF KANGAROO ISLAND.
MINERAL RESOURCES REVIEW 154, SADME, PP 5-21.

JOHNSON PD AND CRETENDEN PP 1984
CONSTRUCTION MATERIAL RESOURCES OF KANGAROO ISLAND
MINERAL RESOURCES REVIEW 154, SADME PP5-21.

MINERAL DEPOSITS : DEPOSIT INFORMATION

DEPOSIT : 525 OLD GOVERNMENT QUARRY

BRIEF DESCRIPTION : OLD BASALT QUARRY NOW WITHIN TOWN LIMITS, HISTORIC SITE

MINOR COMMODITY : AGGREGATE

LOCATION :

lat : deg 35 mins 38 secs 49
long : deg 137 mins 38 secs 22

District Council : KINGSCOTE
Hundred : MENZIES Section : 6 County : CARNARVON

250k map : KINGSCOTE 100k map : 6426 KINGSCOTE

LOCATION COMMENTS :

reference point :
location method : SCALED OFF 50K MAP
comments : WITHIN KINGSCOTE TOWN LIMITS, ALIENATED FROM PRODUCTION

MINERAL DEPOSITS : OREBODY INFORMATION

DEPOSIT : 525 OLD GOVERNMENT QUARRY

OREBODY : 525 OLD GOVERNMENT QUARRY

MINERALOGY

orebody : BASALT
gangue :
texture :
alteration :
enrichment :

GEOLOGY :

lithology : BASALT
formation : WISANGER BASALT
age : JURASSIC
relationship :

MINERAL DEPOSITS : MINE INFORMATION

DEPOSIT : 525 OLD GOVERNMENT QUARRY

MINE : 525 OLD GOVERNMENT QUARRY

OREBODY : 525 OLD GOVERNMENT QUARRY

GENERAL :

working method : OPENCUT
description of workings : REHABILITATED AS HISTORIC SITE?
mine plan :
discovery history : USED IN 1840 AS A SOURCE FOR ROAD
AGGREGATE FOR PORT ROAD, ADELAIDE
operating status in 1990 ABANDONED

MINERAL DEPOSITS : REFERENCES

DEPOSIT : 525 OLD GOVERNMENT QUARRY

BROWN HYL
REPORT BY THE GOVERNMENT GEOLOGIST
PARLIAMENTARY PAPERS 36

1898

MINERAL DEPOSITS : DEPOSIT INFORMATION

DEPOSIT : 526 MIDDLE RIVER

BRIEF DESCRIPTION : SOURCE OF AGGREGATE FOR MIDDLE RIVER DAM.

MAJOR COMMODITY : AGGREGATE

GEOLOGICAL PROVINCE : KANMANTOO TROUGH

LOCATION :

lat : deg 35 mins 42 secs 59
long : deg 137 mins 5 secs 31

District Council : KINGSCOTE
Hundred : DUNCAN Section : 79 County : CARNARVON

250k map : KINGSCOTE 100k map : 6326 VIVONNE

LOCATION COMMENTS :

reference point :
location method : SCALED OFF 50K MAP
comments : SEE MIN RES REV 154 FOR MINE PLAN

MINERAL DEPOSITS : OREBODY INFORMATION

DEPOSIT : 526 MIDDLE RIVER

OREBODY : 526 MIDDLE RIVER

DESCRIPTION : SOME SHALEY INTERBEDS UNSUITABLE FOR AGGREGATE

MINERALOGY

orebody : METASANDSTONE
gangue :
texture :
alteration :
enrichment :

GEOLOGY :

lithology : LAMINATED (BI) METASANDSTONE
formation : KANMANTOO GROUP
age : CAMBRIAN
relationship :

RESERVES :

commodity : AGGREGATE INDICATED reserves at 1982

reserves unit grade unit
27000 CU.M

IF QUARRY EXTENDED NTH. EXTENSIVE RESERVES TO WEST

MINERAL DEPOSITS : MINE INFORMATION

DEPOSIT : 526 MIDDLE RIVER

MINE : 526 MIDDLE RIVER

OREBODY : 526 MIDDLE RIVER

GENERAL :

working method : OPENCUT
description of workings : MAJOR QUARRY IN THE RIVER VALLEY
mine plan : 81-605
discovery history : SURVEYED BY D STAPLEDON SPECIFICALLY FOR
THE MIDDLE RIVER DAM
operating status in 1990 ABANDONDED

OWNERSHIP :

name : EWS
role : OWNER/OPERATOR
period : 1966-1968

PRODUCTION

AGGREGATE	CUMULATIVE	1966 TO 1968
amount 8000	unit CU.M	
grade	unit	

MINERAL DEPOSITS : REFERENCES

DEPOSIT : 526 MIDDLE RIVER

JOHNSON PD 1982
MIDDLE RIVER QUARTZITE QUARRY, KANGAROO ISLAND.
RB82/23 SADME UNPUBLISHED REPORT

JOHNSON PD AND CRETTENDEN PP 1984
CONSTRUCTION MATERIAL RESOURCES OF KANGAROO ISLAND.
MINERAL RESOURCES REVIEW 154, SADME PP5-21

STAPLEDON DH AND ROBSON S 1965
MIDDLE RIVER DAM K.I., PROPOSED QUARRY FOR CONCRETE AGGREGATE.
RB/60/90, SADME UNPUBLISHED REPORT BOOK.

MINERAL DEPOSITS : DEPOSIT INFORMATION

DEPOSIT : 527 NEW LAKE

BRIEF DESCRIPTION : SALT LAKE WORKED FOR SALT AND GYPSUM

MAJOR COMMODITY : GYPSUM
SALT

GEOLOGICAL PROVINCE : COASTAL ZONE

LOCATION :

lat : deg 35 mins 49 secs 4
long : deg 137 mins 49 secs 27

District Council : DUDLEY
Hundred : DUDLEY Section : County : CARNARVON

250k map : KINGSCOTE 100k map : 6426 KINGSCOTE

LOCATION COMMENTS :

reference point : STOCKPILE
location method : SCALED OFF 50K MAP
comments :

MINERAL DEPOSITS : OREBODY INFORMATION

DEPOSIT : 527 NEW LAKE

OREBODY : 527 NEW LAKE

DESCRIPTION : SALT CRUST OVERLYING A GYPSUM DEPOSIT

SETTING :

form : CONCORDANT
genesis : EVAPORATION
nature of : CRUST
mineralization
controls :
age of : PLEISTOCENE
mineralization

MINERALOGY

orebody : SALT
gangue : GYPSUM
texture :
alteration :
enrichment :

GEOLOGY :

lithology : CALCAREOUS AEOLIANITE
formation : BRIDGEWATER FORMATION
age : PLEISTOCENE
relationship :

RESERVES :

commodity :

reserves at

reserves unit grade

unit

HARVEST YIELDS DECLINE IN LATER YEARS

MINERAL DEPOSITS : MINE INFORMATION

DEPOSIT : 527 NEW LAKE

MINE : 527 NEW LAKE

OREBODY : 527 NEW LAKE

GENERAL :

working method : EVAPORATION
description of workings : SMALL SALT SCRAPING OPERATION, NOW
ALIENATED BY GYPSUM MINING OPERATION
mine plan :
discovery history : WORKED FROM 1900?
operating status in 1990 ABANDONED

OWNERSHIP :

name : COMMONWEALTH SALT CO
role : OWNER/OPERATOR
period : 1913 TO 1931

name : AUSTRALIAN SALT CO
role : OWNER/OPERATOR
period : 1932 TO 1959

TENEMENT :

tenement number : MISC 41 status : EXPIRED

PRODUCTION

SALT		ANNUAL		1920
amount	20	unit	TONS	
grade	97	unit	%	

MINERAL DEPOSITS : OREBODY INFORMATION

DEPOSIT : 527 NEW LAKE

OREBODY : 90012 NEW LAKE

DESCRIPTION : PRECIPITATING BRINES IMPOUNDED BY DUNEFIELD REFURBISHED BY SEA WATER

SETTING :

form : CONCORDANT
genesis : EVAPORATION
nature of : CRUST
mineralization
controls :
age of : PLEISTOCENE
mineralization

MINERALOGY

orebody : SELLENITE, WITH ARAGONITE LAMINATIONS
gangue :
texture : MASSIVE CRYSTALLINE
alteration :
enrichment : OF BRINES BY EVAPORATION

GEOLOGY :

lithology : CALCAREOUS AEOLIANITE
formation : BRIDGEWATER FORMATION
age : PLEISTOCENE
relationship :

RESERVES :

commodity : GYPSUM PROBABLE reserves at 1975

reserves unit grade unit
2000000 TON 92 %
ORIGINAL RESERVE ESTIMATES

commodity : GYPSUM PROVEN reserves at 1989

reserves unit grade unit
50000 TON 92 %

GYPSUM REMAINING IN STOCKPILE, REST MINED OUT

MINERAL DEPOSITS : MINE INFORMATION

DEPOSIT : 527 NEW LAKE

MINE : 90012 NEW LAKE

OREBODY : 90012 NEW LAKE

GENERAL :

working method : OPEN CUT
description of workings : QUARRYING OF LAKE BED COMPLETED IN 1986.
SMALL STCKPILE REMAINS IN 1989
mine plan :
discovery history : GYPSUM DISCOVERED UNDER SALT CRUST IN
1974
operating status in 1990 ABANDONED

OWNERSHIP :

name : COLONIAL SUGAR REFINING
role : OWNER/OPERATOR
period : 1975 TO 1986

PRODUCTION

GYPSUM		CUMULATIVE	1975 TO 1986
amount	2000000	unit	TONNES
grade		unit	

MINERAL DEPOSITS : REFERENCES

DEPOSIT : 527 NEW LAKE

DUBOWSKI EA, OLLIVER JG AND DOWNIE I 1989
THE GYPSUM INDUSTRY OF KANGAROO ISLAND
RB89/55 SADME UNPUBLISHED REPORT BOOK

DUBOWSKI EA, OLLIVER JG AND DOWNIE I 1989
THE GYPSUM INDUSTRY OF KANGAROO ISLAND ...
RB89/55, UNPUBLISHED INTERNAL SADME REPORT.

JACK RL 1921
THE SALT AND GYPSUM RESOURCES OF SOUTH AUSTRALIA.
BULLETIN 8, SADME P46

MINERAL DEPOSITS : DEPOSIT INFORMATION

DEPOSIT : 528 SALT LAKE

BRIEF DESCRIPTION : SALT LAKE WORKED FOR GYPSUM AND SALT

MAJOR COMMODITY : GYPSUM
SALT

GEOLOGICAL PROVINCE : COASTAL ZONE

LOCATION :

lat : deg 35 mins 51 secs 47
long : deg 137 mins 40 secs 58

District Council : KINGSCOTE
Hundred : HAINES Section : County : CARNARVON

250k map : KINGSCOTE 100k map : 6426 KINGSCOTE

LOCATION COMMENTS :

reference point : STOCKPILE
location method : SCALED OFF 50 K MAP
comments :

MINERAL DEPOSITS : OREBODY INFORMATION

DEPOSIT : 528 SALT LAKE

OREBODY : 528 SALT LAKE

DESCRIPTION : SALT CRUST OVERLYING GYPSUM DEPOSIT

SETTING :

form : CONCORDANT
genesis : EVAPORATION
nature of : CRUST
mineralization
controls :
age of : PLEISTOCENE
mineralization

MINERALOGY

orebody : SALT
gangue : GYPSUM
texture :
alteration :
enrichment : OF BRINES BY EVAPORATION

GEOLOGY :

lithology : CALCAREOUS AEOLIANITE
formation : BRIDGEWATER FORMATION
age : PLEISTOCENE
relationship :

RESERVES :

commodity : reserves at

reserves unit grade unit
HARVEST YIELDS DECLINING IN LATER YEARS

MINERAL DEPOSITS : MINE INFORMATION

DEPOSIT : 528 SALT LAKE

MINE : 528 SALT LAKE

OREBODY : 528 SALT LAKE

GENERAL :

working method : EVAPORATION
description of workings : SALT SCRAPING OPERATION, NOW ALIENATED BY
GYPSUM MINING OPERATION
mine plan :
discovery history : RECORDED SALT PRODUCTION BEGAN IN 1907,
MAY HAVE OPERATED SINCE 1829
operating status in 1990 ABANDONED

OWNERSHIP :

name : COMMONWEALTH SALT REFINING CO
role : OWNER/OPERATOR
period : 1908 TO 1930

name : AUSTRALIAN SALT CO
role : OWNER/OPERATOR
period : 1931 TO 1956

TENEMENT :

tenement number : MISC 47 status : EXPIRED

PRODUCTION

SALT		ANNUAL	1920
amount	10000	unit TONS	
grade		unit	

MINERAL DEPOSITS : OREBODY INFORMATION

DEPOSIT : 528 SALT LAKE

OREBODY : 90013 SALT LAKE

DESCRIPTION : GYPSITE/ORGANIC MUDS overlain by 2M of CRYSTALLINE GYPSUM AND 1M
OF GYPSARENITE MUD

SETTING :

form : CONCORDANT
genesis : EVAPORATION
nature of : CRUST
mineralization
controls :
age of : PLEISTOCENE
mineralization

MINERALOGY

orebody : SELLENITE WITH ARAGONITE LAMINATIONS
gangue : SALT
texture : CRYSTALS UP TO 2 METRES
alteration :
enrichment : OF BRINES BY EVAPORATION

GEOLOGY :

lithology : CALCAREOUS AEOLIANITE
formation : BRIDGEWATER FORMATION
age : PLEISTOCENE
relationship :

RESERVES :

commodity	: GYPSUM	PROBABLE	reserves at	1956
reserves	unit	grade	unit	
2400000	TON	92	%	
ORIGINAL RESERVES ESTIMATES				

commodity	: GYPSUM	PROVEN	reserves at	1989
reserves	unit	grade	unit	
140000	TON	92	%	
REMAINS IN STOCKPILE AFTER MINING CEASED IN 1982				

MINERAL DEPOSITS : MINE INFORMATION

DEPOSIT : 528 SALT LAKE

MINE : 90013 SALT LAKE

OREBODY : 90013 SALT LAKE

GENERAL :

working method : OPENCUT
description of workings : MAJOR GYPSUM MINE, NOW WORKED OUT. SMALL STOCKPILE REMAINS IN 1989
mine plan :
discovery history : LOCATED UNDER SALT CRUST IN 1956
operating status in 1990 ABANDONED

OWNERSHIP :

name : INGHAMS
role : OWNER/OPERATOR
period : 1956 TO 1960

name : COLONIAL SUGAR REFINING
role : OWNER/OPERATOR
period : 1960 TO 1986

PRODUCTION

GYPSUM		CUMULATIVE	1956 TO 1986
amount	2400000	unit	TONNES
grade	92	unit	%

MINERAL DEPOSITS : REFERENCES

DEPOSIT : 528 SALT LAKE

BROWN HYL 1898
REPORT BY THE GOVERNMENT GEOLOGIST
PARLIAMENTARY PAPERS 36

DUBOWSKI EA 1989
THE GYPSUM INDUSTRY OF KANGAROO ISLAND ...
RB89/55, UNPUBLISHED SADME INTERNAL REPORT

DUBOWSKI EA, OLLIVER JG AND DOWNIE I 1989
THE GYPSUM INDUSTRY OF KANGAROO ISLAND ...
RB89/55, UNPUBLISHED SADME INTERNAL REPORT

JACK RL 1921
THE SALT AND GYPSUM RESOURCES OF SOUTH AUSTRALIA
BULLETIN 8, SADME, P46

MINERAL DEPOSITS : DEPOSIT INFORMATION

DEPOSIT : 529 KI CHINASTONE AND CLAY
also referred to by the name DUDLEY PEGMATITE

PART OF MINING FIELD : DUDLEY PEGMATITE

BRIEF DESCRIPTION : OPENCUT WORKINGS ON WEATHERED PEGMATITE VEIN

MINOR COMMODITY : FELDSPAR
KAOLIN
SILICA
TOURMALINE

GEOLOGICAL PROVINCE : KANMANTOO TROUGH

LOCATION :

lat : deg 35 mins 46 secs 56
long : deg 138 mins 1 secs 21

District Council : DUDLEY
Hundred : DUDLEY Section : 79 County : CARNARVON

250k map : BARKER 100k map : 6526 JERVIS

LOCATION COMMENTS :

reference point :
location method : SCALED OFF 50K MAP
comments :

MINERAL DEPOSITS : OREBODY INFORMATION

DEPOSIT : 529 KI CHINASTONE AND CLAY

OREBODY : 529 KI CHINASTONE AND CLAY

DESCRIPTION : COARSE GRAINED WEATHERED PEGMATITE TO GRAPHIC GRANITE AND APLITE. GEM TOURMALINE ASSOCIATED WITH PODS OF COARSE QUARTZ AND/OR MUSCOVITE.

SETTING :

form : DISCORDANT
genesis : PEGMAITE
nature of : VEIN
mineralization
controls :
age of : DELAMERIAN
mineralization

MINERALOGY

orebody : GEM TOURMALINE SILICA CLAY
gangue : QUARTZ MUSCOVITE MICROCLINE PEGMATITE
texture :
alteration : FELDSPARS ARE KAOLINISED
enrichment :

GEOLOGY :

lithology : METASANDSTONE AND SCHISTS
formation : TAPPANAPPA FORMATION
age : CAMBRIAN
relationship : HOST TO PEGMATITE

MINERAL DEPOSITS : MINE INFORMATION

DEPOSIT : 529 KI CHINASTONE AND CLAY

MINE : 529 KI CHINASTONE AND CLAY

OREBODY : 529 KI CHINASTONE AND CLAY

GENERAL :

working method : OPENCUT
description of workings : OPENCUTS FOR CERAMIC GRADE FELDSPAR,
SILICA AND KAOLIN FOR A LOCAL BRICKWORKS
mine plan : 87-616
discovery history : DISCOVERED IN 1890'S ORIGINALLY AS A GEM
TOURMALINE OCCURRENCE
operating status in 1990 ABANDONED

OWNERSHIP :

name : KI CHINASTONE AND CLAY
role : OWNER/OPERATOR
period : 1905 TO 1910

MINERAL DEPOSITS : REFERENCES

DEPOSIT : 529 KI CHINASTONE AND CLAY

BROWN HYL 1908
RECORD OF MINES, SADME SPECIAL PUBLICATION PP355-356,260-261.

JACK RL 1917
CLAY AND CEMENT IN SOUTH AUSTRALIA.
BULLETIN 12, SADME

KEELING JL 1984
HIGH GRADE LUMP SILICA SOURCES OF SA - A REVIEW
MINERAL RESOURCES REVIEW 154 SADME P54

KEELING JL AND RACHMAT 1987
DUDLEY PEGMATITE, PRELIMINARY INVESTIGATION FOR KAOLIN
RB87/119 SADME UNPUBLISHED REPORTBOOK

MINERAL DEPOSITS : DEPOSIT INFORMATION

DEPOSIT : 530 UNNAMED

PART OF MINING FIELD : DUDLEY PEGMATITE

BRIEF DESCRIPTION : OPENCUT WORKINGS ON WEATHERED WHITE CLAY FOR
BRICKWORKS AT HOG BAY

MAJOR COMMODITY : FIRECLAY

GEOLOGICAL PROVINCE : KANMANTOO TROUGH

LOCATION :

lat : deg 35 mins 46 secs 41
long : deg 138 mins 1 secs 0

District Council : DUDLEY

Hundred : DUDLEY Section : 80 County : CARNARVON

250k map : BARKER

100k map : 6526 JERVIS

LOCATION COMMENTS :

reference point : OPENCUT

location method : SCALED OFF 50K MAP

comments :

MINERAL DEPOSITS : OREBODY INFORMATION

DEPOSIT : 530 UNNAMED

OREBODY : 530 UNNAMED

DESCRIPTION : IRONSTAINED WHITE CLAY, NOT KNOWN IF DETRITAL OR WEATHERED
KANMANTOO

MINERALOGY

orebody : WHITE CLAY
gangue :
texture :
alteration : SOME IRONSTAINING
enrichment :

GEOLOGY :

lithology : GEY SANDSTONES AND SCHIST
formation : TAPPANAPPA FORMATION
age : CAMBRIAN
relationship :

MINERAL DEPOSITS : MINE INFORMATION

DEPOSIT : 530 UNNAMED

MINE : 530 UNNAMED

OREBODY : 530 UNNAMED

GENERAL :

working method : OPENCUT
description of workings : 12M X 12M X 5M OPENCUT WITH 2M OF
OVERBURDEN
mine plan : S19470
discovery history : DISCOVERED 1906
operating status in 1990 ABANDONED

OWNERSHIP :

name : KI CHINASTONE AND CLAY
role : OWNER/OPERATOR
period : 1906 TO 1910

MINERAL DEPOSITS : REFERENCES

DEPOSIT : 530 UNNAMED

BROWN HYL 1908
RECORD OF MINES, SADME SPECIAL PUBLICATION, PP 355-356, 260-261

JACK RL 1926
CLAY AND CEMENT IN SOUTH AUSTRALIA
BULLETIN 12 SADME.

KEELING JL AND RACHMAT 1987
DUDLEY PEGMATITE, PRELIMINARY INVESTIGATION FOR KAOLIN
RB87/119 SADME UNPUBLISHED REPORT.

MINERAL DEPOSITS : DEPOSIT INFORMATION

DEPOSIT : 531 UNNAMED

BRIEF DESCRIPTION : SALT LAKE WORKED FOR SALT AT TURN OF CENTURY

MAJOR COMMODITY : SALT

GEOLOGICAL PROVINCE : COASTAL ZONE

LOCATION :

lat : deg 35 mins 37 secs 51
long : deg 137 mins 33 secs 3

District Council : KINGSCOTE
Hundred : KINGSCOTE Section : 453

250k map : KINGSCOTE 100k map : 6426 KINGSCOTE

LOCATION COMMENTS :

reference point : CENTROID
location method : SCALED OFF MAP
comments : CENTRE OF LAKE USED

MINERAL DEPOSITS : OREBODY INFORMATION

DEPOSIT : 531 UNNAMED

OREBODY : 531 UNNAMED

DESCRIPTION : SALT CRUST DEVELOPED ON SUFACE OF LAKE BED IMPOUNDED BY SAND
DUNES

SETTING :

form : CONCORDANT
genesis : EVAPORATION
nature of : CRUST
mineralization
controls :
age of : HOLOCENE
mineralization

MINERALOGY

orebody : SALT
gangue :
texture :
alteration :
enrichment :

GEOLOGY :

lithology : AEOLIAN SAND
formation : SEMAPHORE SAND
age : HOLOCENE
relationship :

MINERAL DEPOSITS : MINE INFORMATION

DEPOSIT : 531 UNNAMED

MINE : 531 UNNAMED

OREBODY : 531 UNNAMED

GENERAL :

working method : EVAPORATION
description of workings : "A LITTLE SALT WON FROM TIME TO TIME"
JACK.
mine plan :
discovery history :
operating status in 1990 ABANDONED

OWNERSHIP :

name : MCGLEW AND DAVIS
role : OWNER/OPERATOR
period : 1921

TENEMENT :

tenement number : MISC 50 status : EXPIRED

MINERAL DEPOSITS : REFERENCES

DEPOSIT : 531 UNNAMED

JACK RL 1921
THE SALT RESOURCES OF SOUTH AUSTRALIA
BULLETIN 8, SADME, P46.

SPRIGG RC 1954
KINGSCOTE
1" TO 4 MILES SADME PUBLISHED GEOLOGICAL SHEET

MINERAL DEPOSITS : DEPOSIT INFORMATION

DEPOSIT : 532 UNNAMED

BRIEF DESCRIPTION : SALT LAKE WORKED FOR SALT

MINOR COMMODITY : SALT

GEOLOGICAL PROVINCE : COASTAL ZONE

LOCATION :

lat : deg 35 mins 37 secs 19
long : deg 137 mins 32 secs 23

District Council : KINGSCOTE
Hundred : MENZIES Section : 78 County : CARNARVON

250k map : KINGSCOTE 100k map : 6426 KINGSCOTE

LOCATION COMMENTS :

reference point : CENTROID
location method : SCALED OFF 50K MAP
comments :

MINERAL DEPOSITS : OREBODY INFORMATION

DEPOSIT : 532 UNNAMED

OREBODY : 532 UNNAMED

DESCRIPTION : SALT CRUST OVER THIN GYPSUM LAYER WITH IMPERVIOUS MUD BOTTOM

SETTING :

form : CONCORDANT
genesis : EVAPORATION
nature of : CRUST
mineralization
controls :
age of : HOLOCENE
mineralization

MINERALOGY

orebody : SALT
gangue : GYPSUM
texture :
alteration :
enrichment :

GEOLOGY :

lithology : ALLUVIAN MUD
formation : SEMAPHORE SAND
age : HOLOCENE
relationship :

MINERAL DEPOSITS : MINE INFORMATION

DEPOSIT : 532 UNNAMED

MINE : 532 UNNAMED

OREBODY : 532 UNNAMED

GENERAL :

working method : EVAPORATION
description of workings : MINOR WORKINGS
mine plan :
discovery history :
operating status in 1990 ABANDONED

MINERAL DEPOSITS : REFERENCES

DEPOSIT : 532 UNNAMED

JACK RL 1921
THE GYPSUM RESOURCES OF SOUTH AUSTRALIA
BULLETIN 8, SADME P 49

SPRIGG RC 1954
KINGSCOTE
1" TO 4 MILES SADME PUBLISHED GEOLOGICAL SHEET

MINERAL DEPOSITS : DEPOSIT INFORMATION

DEPOSIT : 533 CUTTLEFISH MANGANESE

BRIEF DESCRIPTION : 1M WIDE GOSSAN ON FAULTED CONTACT, BRIGHTON LMSTNE AND
TAPLEY HILL FM

MINOR COMMODITY : MN

GEOLOGICAL PROVINCE : ADELAIDE GEOSYNCLINE

LOCATION :

lat : deg 35 mins 44 secs 4
long : deg 138 mins 0 secs 53

District Council : DUDLEY
Hundred : DUDLEY Section : 89 County : CARNARVON

250k map : BARKER 100k map : 6526 JERVIS

LOCATION COMMENTS :

reference point : ADIT
location method. : SCALED OFF 50K MAP
comments : AIR PHOTO 2979/123/29 (APB), ADIT HIDDEN BY
BOXTHORNS

MINERAL DEPOSITS : OREBODY INFORMATION

DEPOSIT : 533 CUTTLEFISH MANGANESE

OREBODY : 533 CUTTLEFISH MANGANESE

DESCRIPTION : SECONDARY MANGANESE MINERALIZATION IN A CONTACT SHEAR ZONE
BETWEEN BRIGHTON LIMESTONE AND TAPLEY HILL FM

SETTING :

form : CONCORDANT
genesis : HYDROTHERMAL
nature of : VEIN
mineralization
controls : FAULT
age of :
mineralization

MINERALOGY

orebody : MANGANESE OXIDES
gangue :
texture : GOSSAN WITH SHEARED MICA SCHISTS
alteration : SECONDARY MN OXIDES
enrichment :

GEOLOGY :

lithology : SANDY MARBLE
formation : BRIGHTON LIMESTONE
age : STURTIAN
relationship : WEST OF TAPLEY HILL FM ON OVERTURNED LIMB

lithology : LAMINATED SANDY SILTSTONE
formation : TAPLEY HILL FORMATION
age : STURTIAN
relationship : EAST OF BRIGHTON LIMESTONE ON OVERTURNED LIMB

RESERVES :

commodity	: MN	reserves at	1908
reserves	unit	grade	unit
GRADE OF 23% MN REPORTED			

MINERAL DEPOSITS : MINE INFORMATION

DEPOSIT : 533 CUTTLEFISH MANGANESE

MINE : 533 CUTTLEFISH MANGANESE

OREBODY : 533 CUTTLEFISH MANGANESE

GENERAL :

working method : UNDERGROUND
description of workings : 130 FT ADIT ALONG FAULTED BOUNDARY ABOUT
6 METRES ABOVE SEA LEVEL
mine plan :
discovery history :
operating status in 1990 ABANDONED

OWNERSHIP :

name : CUTTLEFISH MANGANESE SYNDICATE
role : OWNER/OPERATOR
period : 1897

MINERAL DEPOSITS : REFERENCES

DEPOSIT : 533 CUTTLEFISH MANGANESE

BROWN HYL 1898
REPORT BY THE GOVERNMENT GEOLOGIST
PARLIAMENTARY PAPERS 36

BROWN HYL 1899
RECORD OF MINES, SADME SPECIAL PUBLICATION P182

BROWN HYL 1908
RECORD OF MINES, SADME SPECIAL; PUBLICATION. P352

MINERAL DEPOSITS : DEPOSIT INFORMATION

DEPOSIT : 534 DEWRANG PROSPECT

BRIEF DESCRIPTION : UNWORKED OCCURRENCE OF DISSEMINATED SULPHIDE
MINERALIZATION

MINOR COMMODITY : CU
PB
ZN

GEOLOGICAL PROVINCE : KANMANTOO TROUGH

LOCATION :

lat : deg 35 mins 42 secs
long : deg 137 mins 11 secs

District Council : KINGSCOTE
Hundred : CASSINI Section : County : CARNARVON

250k map : KINGSCOTE 100k map : 6326 VIVONNE

LOCATION COMMENTS :

reference point :
location method : SCALED OFF MAP
comments :

MINERAL DEPOSITS : OREBODY INFORMATION

DEPOSIT : 534 DEWRANG PROSPECT

OREBODY : 534 DEWRANG PROSPECT

DESCRIPTION : PARTIALLY REMOBILISED SYNGENETIC SULPHIDES NOW DISSEMINATED
CLOTS AND FRACTURE INFILLS

MINERALOGY

orebody	:	SPHALERITE CHALCOPYRITE GALENA
gangue	:	MARCASITE
texture	:	DISSEMINATED
alteration	:	
enrichment	:	

GEOLOGY :

lithology	:	FINE GRAINED SANDSTONE
formation	:	KANMANTOO GROUP
age	:	CAMBRIAN
relationship	:	

MINERAL DEPOSITS : REFERENCES

DEPOSIT : 534 DEWRANG PROSPECT

SHELL MINERALS, EL 819, PARNDANA
ENV 4250, SADME ENVELOPE

PREUSSAG AUSTRALIA EL 221
ENV 2695, SADME ENVELOPE

AOG MINERALS, SML 688
ENV 2022, SADME ENVELOPE.

AOG MINERALS, EL61
ENV 2304, SADME ENVELOPE,

AOG MINERALS SML 689
ENV 2023, SADME ENVELOPE.

BOYD BR 1980
DEWRANG PB PROSPECT, KANMANTOO GROUP, KANGAROO ISLAND.
JOURNAL OF GEOCHEM EXPLORATION, VOL 12, NO 2/3

GERDES RA 1990
AN INTERPRETATION OF THE STILEPEN MAGNETIC ANOMOLY...
RB90/49 SADME UNPUBLISHED REPORT BOOK

MCCALLUM WS 1991
GEOLOGICAL INVESTIGATIONS AND DRILLING, PARNDANA AREA, ...
RB91/23 SADME UNPUBLISHED REPORT BOOK

MINERAL DEPOSITS : DEPOSIT INFORMATION

DEPOSIT : 535 GRAINGERS

PART OF MINING FIELD : GRAINGERS

BRIEF DESCRIPTION : SULPHIDES AND GOLD ASSOCIATED WITH QUTZ VEINS.
NUMEROUS SMALL WORKINGS

MAJOR COMMODITY : PB
ZN

MINOR COMMODITY : AG
CU

GEOLOGICAL PROVINCE : KANMANTOO TROUGH

LOCATION :

lat : deg 35 mins 42 secs 26
long : deg 137 mins 13 secs 44

District Council : KINGSCOTE
Hundred : CASSINI Section : 53 County : CARNARVON

250k map : KINGSCOTE 100k map : 6326 VIVONNE

LOCATION COMMENTS :

reference point :
location method : GPS
comments : SEE PLAN IN MCCALLUM RB91/23

MINERAL DEPOSITS : OREBODY INFORMATION

DEPOSIT : 535 GRAINGERS

OREBODY : 535 GRAINGERS

DESCRIPTION : MINOR QUARTZ VEINS WITH SECONDARY CRYSTAL GROWTHS INTO VUGS
CROSSCUTTING SLATEY SANDSTONES

SETTING :

form : DISCORDANT
genesis : HYDROTHERMAL
nature of : VEINS
mineralization
controls : FAULT ?
age of :
mineralization

MINERALOGY

orebody : SPHALERITE
gangue : GALENA GLASSY WHITE QUARTZ
texture : DISSEMINATED
alteration : KAOLINISATION MINOR SECONDARY CU CARBONATES
enrichment :

GEOLOGY :

lithology : LAMINATED SANDSTONE
formation : KANMANTOO GROUP
age : CAMBRIAN
relationship :

MINERAL DEPOSITS : MINE INFORMATION

DEPOSIT : 535 GRAINGERS

MINE : 535 GRAINGERS

OREBODY : 535 GRAINGERS

GENERAL :

working method : UNDERGROUND
description of workings : SIX WIDELY SPACED SHAFTS/PITS IN THE
REGION. NO INDICATION OF BONA VENTURA
mine plan : 91-222 TO 223
discovery history :
operating status in 1990 ABANDONED

MINERAL DEPOSITS : REFERENCES

DEPOSIT : 535 GRAINGERS

CASSINI

1:50000 TOPOGRAPHIC SHEET

PREUSSAG AUSTRALIA EL 221

ENV 2695, SADME ENVELOPE.

MCCALLUM WS

1991

GEOLOGICAL INVESTIGATIONS AND DRILLING, PARNDANA AREA, ...

RB91/23 SADME UNPUBLISHED REPORT BOOK

MINERAL DEPOSITS : DEPOSIT INFORMATION

DEPOSIT : 536 GRA7

PART OF MINING FIELD : GRAINGERS

BRIEF DESCRIPTION : UNWORKED DRILLHOLE INTERSECTION OF LEAD ZINC SULPHIDES

MAJOR COMMODITY : PB
ZN

MINOR COMMODITY : AG

GEOLOGICAL PROVINCE : KANMANTOO TROUGH

LOCATION :

lat : deg 35 mins 42 secs 30
long : deg 137 mins 13 secs 51

District Council : KINGSCOTE
Hundred : CASSINI Section : 53 County : CARNARVON

250k map : KINGSCOTE 100k map : 6326 VIVONNE

LOCATION COMMENTS :

reference point : DDH COLLAR
location method : GPS
comments : GRA7 IS DRILLHOLE NAME

MINERAL DEPOSITS : OREBODY INFORMATION

DEPOSIT : 536 GRA7

OREBODY : 536 GRA7

DESCRIPTION : ANASAMOSING VEINLETS CONTAIN SULPHIDE MINERALIZATION

SETTING :

form : DISCORDANT
genesis : HYDROTHERMAL
nature of : VEINS
mineralization
controls : FAULT ?
age of :
mineralization

MINERALOGY

orebody : SPHALERITE GALENA
gangue : QUARTZ
texture : ANASTAMOSING MICROVEINLETS
alteration : KAOLINIZATION MINOR LIMONITE
enrichment :

GEOLOGY :

lithology : LAMINATED SANDSTONE
formation : KANMANTOO GROUP
age : CAMBRIAN
relationship :

RESERVES :

commodity : ZINC reserves at 1990

reserves	unit	grade	unit
16	M	2.69	%
DRILLHOLE INTERSECTION ASSAYED			

commodity : LEAD reserves at 1990

reserves	unit	grade	unit
16	M	0.45	%
DRILLHOLE INTERSECTION ASSAYED			

commodity : SILVER reserves at 1990

reserves	unit	grade	unit
16	M	1.7	G/T
DRILLHOLE INTERSECTION ASSAYED			

MINERAL DEPOSITS : REFERENCES

DEPOSIT : 536 GRA7

MCCALLUM WS 1991
GEOLOGICAL INVESTIGATIONS AND DRILLING, PARNDANA AREA, ...
RB91/23 SADME UNPUBLISHED REPORT BOOK

MINERAL DEPOSITS : DEPOSIT INFORMATION

DEPOSIT : 537 UNNAMED

PART OF MINING FIELD : GRAINGERS

BRIEF DESCRIPTION : QUARTZ VEIN ASSOCIATED WITH ANOMOLOUS GOLD. MINOR
PROSPECTING PIT.

MINOR COMMODITY : AU

GEOLOGICAL PROVINCE : KANMANTOO TROUGH

LOCATION :

lat : deg 35 mins 42 secs 32
long : deg 137 mins 13 secs 40

District Council : KINGSCOTE
Hundred : CASSINI Section : 53 County : CARNARVON

250k map : KINGSCOTE 100k map : 6326 VIVONNE

LOCATION COMMENTS :

reference point : PIT
location method : GPS
comments : SMALL PIT ON QUARTZ, SEE MAP IN MCCALLUM RB91/23

MINERAL DEPOSITS : OREBODY INFORMATION

DEPOSIT : 537 UNNAMED

OREBODY : 537 UNNAMED

DESCRIPTION : ANOMOLOUS GOLD IN ALTERATION ZONE ADJACENT TO QUARTZ REEF. NO
SULPHIDES PRESENT.

SETTING :

form : DISCORDANT
genesis : HYDROTHERMAL
nature of : VEIN
mineralization
controls :
age of :
mineralization

MINERALOGY

orebody : GOLD
gangue : QUARTZ
texture : DISSEMINATED
alteration : KAOLINIZATION
enrichment :

GEOLOGY :

lithology : LAMINATED SANDSTONES
formation : KANMANTOO GROUP
age : CAMBRIAN
relationship :

MINERAL DEPOSITS : REFERENCES

DEPOSIT : 537 UNNAMED

PREUSSAG AUSTRALIA EL 221
ENV 2695, SADME ENVELOPE.

MCCALLUM WS 1991
GEOLOGICAL INVESTIGATIONS AND DRILLING, PARNDANA AREA, ...
RB91/23 SADME UNPUBLISHED REPORT BOOK

MINERAL DEPOSITS : DEPOSIT INFORMATION

DEPOSIT : 538 PERSEVERANCE

PART OF MINING FIELD : GRAINGERS

BRIEF DESCRIPTION : SULPHIDES ASSOCIATED WITH QUARTZ VEINING

MINOR COMMODITY : AG
AU
PB
ZN

GEOLOGICAL PROVINCE : KANMANTOO TROUGH

LOCATION :

lat : deg 35 mins 42 secs 26
long : deg 137 mins 13 secs 36

District Council : KINGSCOTE
Hundred : CASSINI Section : 52 County : CARNARVON

250k map : KINGSCOTE 100k map : 6326 VIVONNE

LOCATION COMMENTS :

reference point : SHAFT
location method : MAP
comments : SOME UNCERTAINTY OVER THIS SHAFT BEING
PERSEVERANCE

MINERAL DEPOSITS : OREBODY INFORMATION

DEPOSIT : 538 PERSEVERANCE

OREBODY : 538 PERSEVERANCE

SETTING :

form : DISCORDANT
genesis : HYDROTHERMAL
nature of : VEIN
mineralization
controls : FAULT
age of :
mineralization

MINERALOGY

orebody : SPHALERITE GALENA
gangue : QUARTZ
texture :
alteration : KAOLINIZATION ?
enrichment :

GEOLOGY :

lithology : LAMINATED SANDSTONE
formation : KANMANTOO GROUP
age : CAMBRIAN
relationship :

MINERAL DEPOSITS : MINE INFORMATION

DEPOSIT : 538 PERSEVERANCE

MINE : 538 PERSEVERANCE

OREBODY : 538 PERSEVERANCE

GENERAL :

working method : UNDERGROUND
description of workings : SEVERAL SHALLOW PITS, NOT FOUND IN RECENT
YEARS.
mine plan : 91-222 TO 223
discovery history :
operating status in 1990 ABANDONED

MINERAL DEPOSITS : REFERENCES

DEPOSIT : 538 PERSEVERANCE

PREUSSAG AUSTRALIA EL 221
ENV 2695, SADME ENVELOPE.

MINING REVIEW 59, SADME, P58 1934

MINING REVIEW 91, SADME, PP207-208. 1951

CLACKLINE LTD, EL 1378, PARNDANA 1987
ENV 6814, SADME UNPUBLISHED ENVELOPE.

BROWN HYL 1898
REPORT BY THE GOVERNMENT GEOLOGIST
PARLIAMENTARY PAPERS 36

BROWN HYL 1899
RECORD OF MINES, SADME SPECIAL PUBLICATION P90

BROWN HYL 1908
RECORD OF MINES, SADME SPECIAL PUBLICATION P187

MCCALLUM WS 1991
GEOLOGICAL INVESTIGATIONS AND DRILLING, PARNDANA AREA, ...
RB91/23 SADME UNPUBLISHED REPORT BOOK

MINERAL DEPOSITS : DEPOSIT INFORMATION

DEPOSIT : 539 BONAVENTURA

PART OF MINING FIELD : GRAINGERS

BRIEF DESCRIPTION : SHAFT IN "CLAY SLATE" ON "SMALL VEIN OR BUNCH"

MINOR COMMODITY : CU

GEOLOGICAL PROVINCE : KANMANTOO GROUP

LOCATION :

lat : deg 35 mins 41 secs 38
long : deg 137 mins 9 secs 9

District Council : KINGSCOTE
Hundred : CASSINI Section : 53 County : CARNARVON

250k map : KINGSCOTE 100k map : 6326 VIVONNE

LOCATION COMMENTS :

reference point : SHAFT
location method : MAP
comments : UNCERTAINTY THAT THIS SHAFT IS BONAVENTURA

MINERAL DEPOSITS : OREBODY INFORMATION

DEPOSIT : 539 BONAVENTURA

OREBODY : 539 BONAVENTURA

DESCRIPTION : NO DETAILED DESCRIPTION AVAILABLE. "SMALL VEIN OR BUNCH ONLY?"

SETTING :

form : DISCORDANT
genesis : HYDROTHERMAL
nature of : VEINS
mineralization
controls : FAULT ?
age of :
mineralization

MINERALOGY

orebody : COPPER
gangue :
texture :
alteration :
enrichment :

GEOLOGY :

lithology : LAMINATED SANDSTONE
formation : KANMANTOO GROUP
age : CAMBRIAN
relationship :

RESERVES :

commodity :	COPPER	reserves at	1898
reserves	unit	grade	unit
		5.25	%
A FRAGMENT FROM DUMP ASSAYED			

MINERAL DEPOSITS : MINE INFORMATION

DEPOSIT : 539 BONAVENTURA

MINE : 539 BONAVENTURA

OREBODY : 539 BONAVENTURA

GENERAL :

working method : UNDERGROUND
description of workings : NO SURFACE INDICATIONS EXCEPT FOR WATER
FILLED SHAFT IN 1908
mine plan : 91-222 TO 223
discovery history :
operating status in 1990 ABANDONDED

PRODUCTION

COPPER ORE	CUMULATIVE	TO 1908
amount 40	unit TONS	
grade	unit	

MINERAL DEPOSITS : REFERENCES

DEPOSIT : 539 BONAVENTURA

CLACKLINE LTD, EL 1378, PARNDANA
ENV 6814, SADME UNPUBLISHED ENVELOPE.

PREUSSAG AUSTRALIA EL 221
ENV 2695, SADME ENVELOPE.

MINING REVIEW 59, SADME, P58 1934

MINING REVIEW 91, SADME, PP 207-208 1951

CLACKLINE LTD, EL 1378, PARNDANA 1987
ENV. 6814 SADME UNPUBLISHED ENVELOPE P120.

BROWN HYL 1898
REPORT BY THE GOVERNMENT GEOLOGIST
PARLIAMENTARY PAPERS 36

BROWN HYL 1908
RECORD OF MINES, SADME SPECIAL PUBLICATION, P34.

MCCALLUM WS 1991
GEOLOGICAL INVESTIGATIONS AND DRILLING, PARNDANA AREA, ...
RB91/23 SADME UNPUBLISHED REPORT BOOK

MINERAL DEPOSITS : DEPOSIT INFORMATION

DEPOSIT : 540 BELLS

PART OF MINING FIELD : DEWRANG

BRIEF DESCRIPTION : NOT KNOWN SHAFT BACK FILLED

MINOR COMMODITY : AG
PB

GEOLOGICAL PROVINCE : KANMANTOO TROUGH

LOCATION :

lat : deg 35 mins 41 secs 38
long : deg 137 mins 9 secs 9

District Council : KINGSCOTE
Hundred : DUNCAN Section : County : CARNARVON

250k map : KINGSCOTE 100k map : 6326 VIVONNE

LOCATION COMMENTS :

reference point : SHAFT
location method : MAP
comments : LOCATION UNCERTAIN, SHAFT BACK FILLED

MINERAL DEPOSITS : OREBODY INFORMATION

DEPOSIT : 540 BELLS

OREBODY : 540 BELLS

DESCRIPTION : DETAILS UNKNOWN, ONLY REFERENCE IN ENV 4250.

GEOLOGY :

lithology	:	LAMINATED SANDSTONE ?
formation	:	KANMANTOO GROUP
age	:	CAMBRIAN
relationship	:	

MINERAL DEPOSITS : REFERENCES

DEPOSIT : 540 BELLS

1981

SHELL MINERALS EL819 PARNDANA
ENV 4250, SADME UNPUBLISHED ENVELOPE P87

1991

MCCALLUM WS
GEOLOGICAL INVESTIGATIONS AND DRILLING, PARNDANA AREA, ...
RB91/23 SADME UNPUBLISHED REPORT BOOK

MINERAL DEPOSITS : DEPOSIT INFORMATION

DEPOSIT : 541 HICKS

also referred to by the name HICKS SILVER

BRIEF DESCRIPTION : SHAFT AND COSTEANS ON BROKEN QUARTZ REEF

MINOR COMMODITY : AG

GEOLOGICAL PROVINCE : KANMANTOO TROUGH

LOCATION :

lat : deg 35 mins 46 secs 30
long : deg 137 mins 10 secs

District Council : KINGSCOTE

Hundred : DUNCAN Section : County : CARNARVON

250k map : KINGSCOTE

100k map : 6326 VIVONNE

LOCATION COMMENTS :

reference point :

location method : UNKNOWN

comments : VAGUE REFERENCE IN PP 36, SEE REFERENCES

MINERAL DEPOSITS : OREBODY INFORMATION

DEPOSIT : 541 HICKS

OREBODY : 541 HICKS

DESCRIPTION : BROKEN QUARTZ VEIN, NO METALLIC MINERALS SEEN (1898)

SETTING :

form : DISCORDANT
genesis : HYDROTHERMAL
nature of : VEIN
mineralization
controls : FAULT
age of :
mineralization

MINERALOGY

orebody :
gangue : QUARTZ
texture : FRACTURED
alteration :
enrichment :

MINERAL DEPOSITS : REFERENCES

DEPOSIT : 541 HICKS

BROWN HYL
REPORT BY THE GOVERNMENT GEOLOGIST
PARLIAMENTARY PAPERS 36

1898

MINERAL DEPOSITS : DEPOSIT INFORMATION

DEPOSIT : 542 UNNAMED

BRIEF DESCRIPTION : PIT WITH ANOMALOUS LEAD/ZINC.

MINOR COMMODITY : PB
ZN

GEOLOGICAL PROVINCE : KANMANTOO TROUGH

LOCATION :

lat : deg 35 mins 38 secs 30
long : deg 137 mins 10 secs 51

District Council : CARNAVON
Hundred : DUNCAN Section : County : CARNARVON

250k map : KINGSCOTE 100k map : 6326 VIVONNE

LOCATION COMMENTS :

reference point : SHAFT
location method : SCALED OFF MAP
comments : NOT SEEN ON GROUND BY DME

MINERAL DEPOSITS : OREBODY INFORMATION

DEPOSIT : 542 UNNAMED

OREBODY : 542 UNNAMED

DESCRIPTION : NO INFORMATION AVAILABLE

MINERAL DEPOSITS : REFERENCES

DEPOSIT : 542 UNNAMED

PREUSSAG, EL 221 KANGAROO ISLAND
ENV 2695 (I-8) SADME UNPUBLISHED ENVELOPE