

ASSOCIATED PLAN 54-221

An inspection of an asbestos deposit which occurs on Mt. Lyndhurst Pastoral Station, 8 miles South east of the Homestead, was made on August 31st, 1954 in company with Messrs. S. Gilbert and G. Amesbury.

Plan - The accompanying plan shows the location of the deposit and geological features of the locality.

The Asbestos Deposits.

Asbestos occurs as mass fibre in intimate association with Quartz, in thin discontinuous veins occupying fractures in Torrensian slates near their faulted contact with slates of the Sturtian (Tapley Hill) series. The Torrensian slates and interbedded dolomites and flaggy quartzites are severely contorted in the locality, while adjacent to the fault there is a zone of intense crushing and brecciation.

The asbestos bearing veins are generally steeply dipping and confined to narrow fractures in the slates and have no particular orientation. Several shallow pits have exposed the occurrences of asbestos over a distance of about $\frac{1}{4}$ mile and in all of these the veins appear to have well defined walls and to vary from less than $\frac{1}{8}$ inch to 2 inches in thickness.

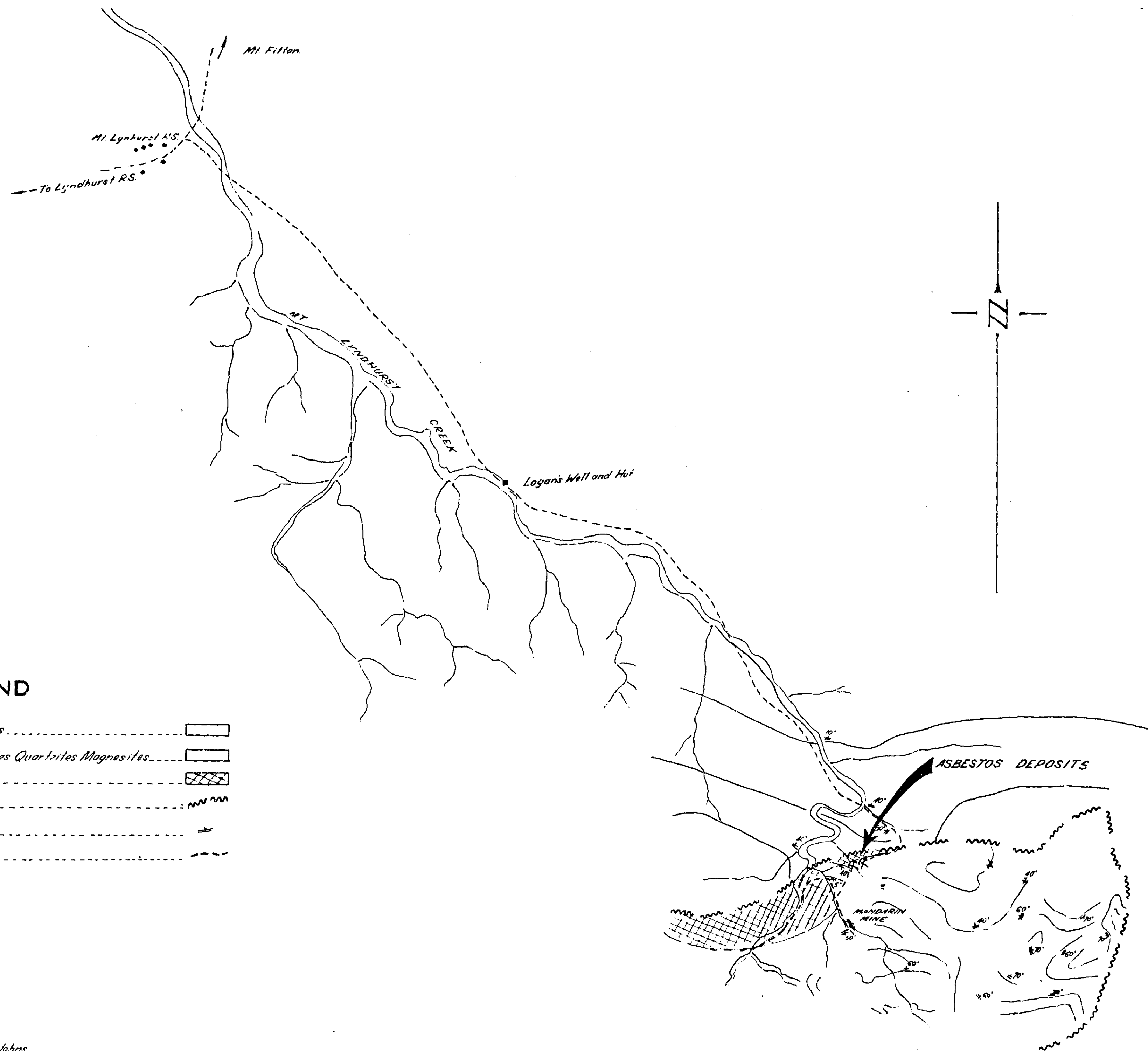
The asbestos is pale blue-grey in colour and occurs in felted fibrous masses in association with quartz. The fibres are short and generally less than $\frac{1}{2}$ inch in length.

Conclusions.

Though the asbestos deposits inspected have no economic value because of the limited amount of the mineral present and because of its admixture with quartz further prospecting in adjacent crush zones is warranted.



R.K. JOHNS.
GEOLOGIST.



To accompany report by R K Johns

| | | | | | | | | | |
|----------------------|--|------|--|---------------|--|-------------------|--|--------|--|
| S. A. DEPT. OF MINES | | | | | | | | | |
| MT LYNDHURST STATION | | | | | | | | | |
| ASBESTOS DEPOSITS | | | | | | | | | |
| Req. No. | | D.M. | | Compiled from | | Approved | | Passed | |
| | | | | | | | | | |
| Associated Drawing | | No. | | Amendment | | Director of Mines | | Ckd. | |
| | | | | | | | | | |
| Exd. | | Date | | | | | | | |
| | | | | | | | | | |