

# MANN

GEOLOGICAL SURVEY OF SOUTH AUSTRALIA  
DEPARTMENT OF MINES ADELAIDE

FIRST EDITION 1962



## REFERENCE

Qrs	Alluvial deposits-silts, sands, and gravels, related to principal drainage channels.
Qr	High and low angle slope deposits marginal to "inselbergs." Coarse talus, grading to gravels and sands.
Qrf	Broad alluvial flats, clayey sand with local calcareous crust.
Qrd	Sand dunes, locally transgressing older units; sand plain.
Qpm	Red sandy clay flats, (?) terra rossa. Associated with dense mulga vegetation.
Qpk	Kunkar.
T-Q	Chalcidonic cappings.
T	Ferruginous cappings, locally grading to pisolitic laterite.
T	Ochre, nickeliferous in part; associated with deep weathering of iron rich ultrabasic rock.
T	Jasper; associated with deep weathering of ultrabasic rock, often associated with serpentine.

## METASEDIMENTARY ROCKS OF THE GRANULITE FACIES

Quartzite, quartz granulite, quartz sillimanite granulite.	
Acid granulite; quartz feldspar granulite and charnockite, quartz pyroxene granulite, garnet rich in part. Associated thin basic bands, and bands of lime silicate marble.	
Intermediate granulite, feldspar pyroxene granulite, garnet rich in part.	
Basic granulite, pyroxene feldspar granulite, locally pyroxene, garnet pyroxene granulite.	
METASOMATISED VARIANTS	
Granitoid rocks: coarse grained porphyritic grading to medium grained massive.	
Local aureole of partially metasomatised granulite, with some development of augen texture.	
Anorthositic rocks: coarse grained, locally discordant, occasional clots and lenses of pyroxene.	
Local aureole of partially metasomatised granulite.	

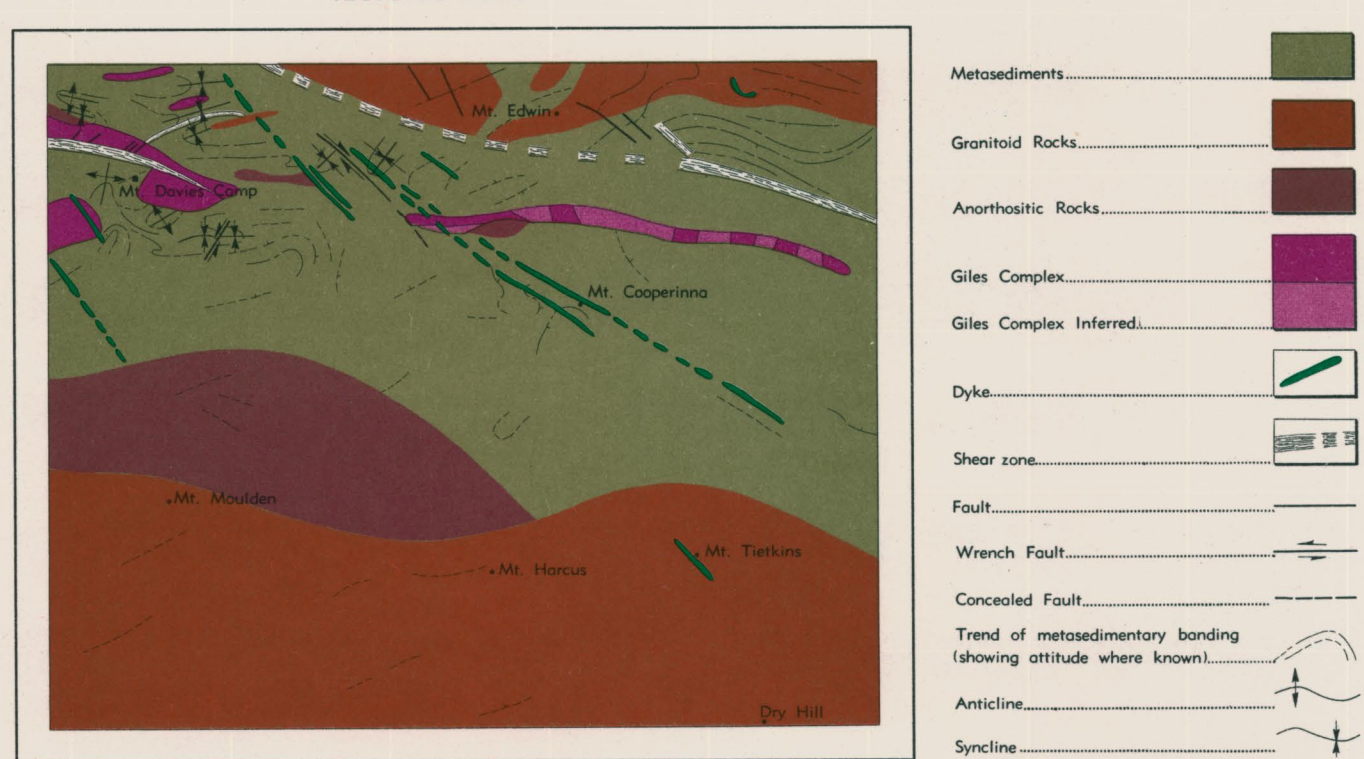
## INTRUSIVE ROCKS GILES COMPLEX

Basic: Norite, olivine norite, gabbro, troctolite.	
Ultrabasic: Pyroxenite, peridotite, picrite, dunite; locally serpentinitised.	
BASIC DYKES: Dolerite, norite, gabbro.	
Allanite pegmatite	

## GEOLOGICAL BOUNDARIES

OBSERVED	
FAULTS	
OBSERVED	
CONCEALED	
SHEAR ZONE	
PLUNGE OF MINOR FOLD	
BEDDING	
INCLINED	
VERTICAL	
TREND OF BEDDING	
FOLIATION	
INCLINED	
VERTICAL	
TREND OF FOLIATION	
LAYERING IN BASIC COMPLEX	
INCLINED	
LINEATION	
INCLINED	
ROAD	
TRACK	
EPHEMERAL STREAM	
TRIANGULATION STATION	
ASTRONOMICAL STATION	
ABORIGINAL LOCALITY	"Nguludjara"

## TECTONIC SKETCH



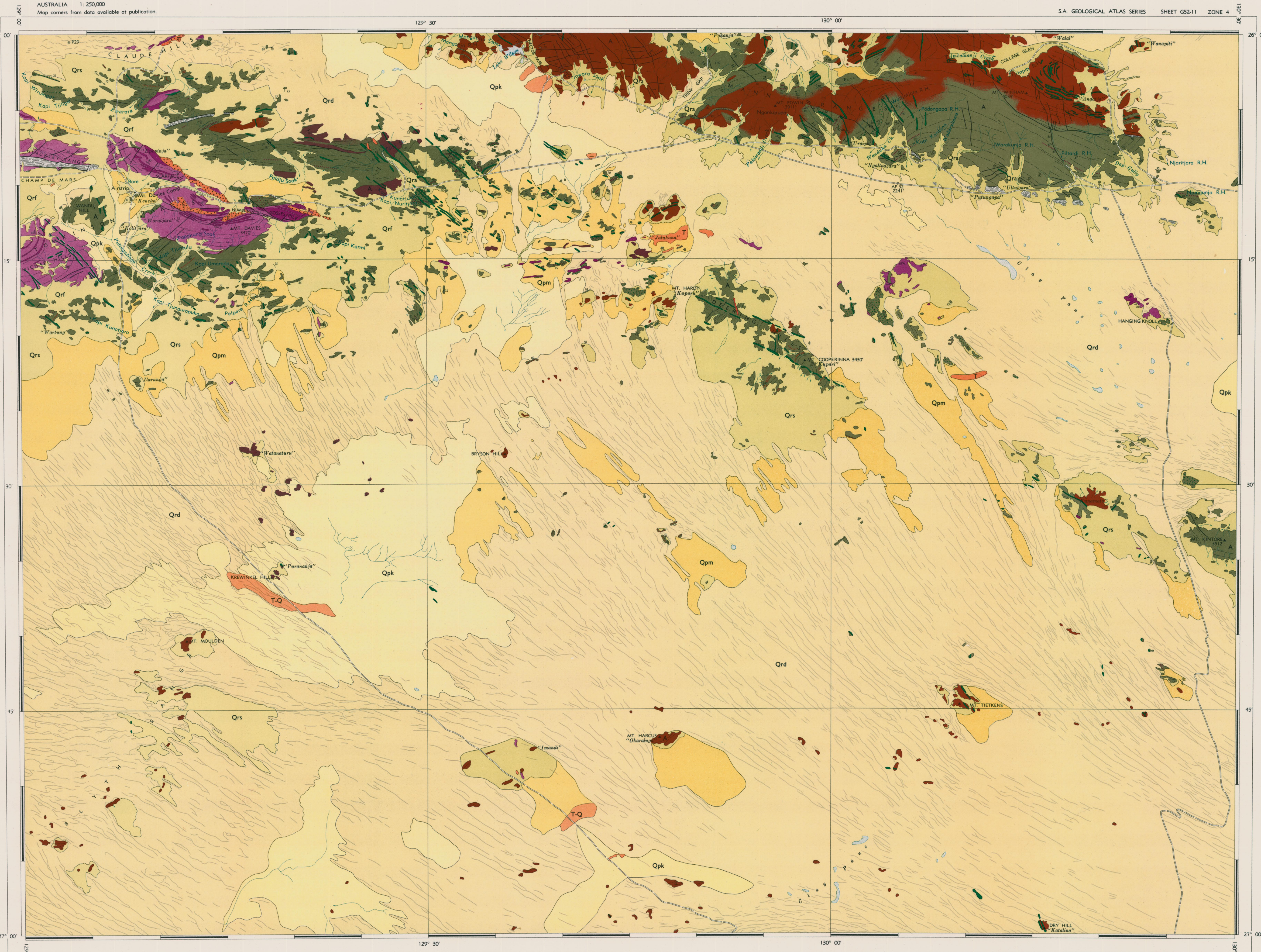
Geology by R. P. THOMSON, M.Sc.,  
R. C. MIRAMS, B.Sc., J. JOHNSON.  
Compiled by R. C. Mirams.  
B. P. Webb, M.Sc., Senior Geologist  
in charge of Regional Mapping.  
E. S. O'Driscoll, B.Sc., Chief Geologist.  
Base map and Cartography by  
Geological Drafting Section,  
Department of Mines, South Australia.  
Compiled under the direction of T. A. Barnes, M.Sc.,  
Government Geologist.  
Issued under the authority of the  
Honourable Sir A. Lyell McEwin, M.L.C., Minister of Mines.  
Published 1962.

Copies of this map may be obtained from the Geological  
Survey of South Australia, Department of Mines, Adelaide, or  
the Bureau of Mineral Resources, Geology and Geophysics,  
Canberra, A.C.T. Printed for the Geological Survey of South  
Australia as a contribution to the Geological Map Series of the  
Commonwealth.

MANN  
SHEET G52-11

AUSTRALIA 1:250,000  
Map corners from data available at publication.

S.A. GEOLOGICAL ATLAS SERIES SHEET G52-11 ZONE 4



## INDEX TO ADJOINING SHEETS

SCOTT	PETERMANN RANGES	AYERS ROCK
COOPER	MANN	WOODROFFE
WAIGAN	BIRKSGATE	LINDSAY

