

MAITLAND

GEOLOGICAL SURVEY OF SOUTH AUSTRALIA
DEPARTMENT OF MINES ADELAIDE

AUSTRALIA 1:250 000
Map Corners from data available at publication.

S.A. GEOLOGICAL ATLAS SERIES SHEET SI 53-12 ZONE 5

FIRST EDITION 1960
REPRINTED 1975



REFERENCE

- Alluvium and low angle slope deposits.
Saline swamps, often with sheet kunkur. Salt flats. Salt lakes with gypsum dunes.
Beach sand and back shore dunes.
Older dunes of former marine strait in Peesey Swamp. Redistributed sand spreads and low dunes.
Downwash. High angle slope deposits and fault scarp debris.
Raised beaches and marine shelly limestones.
Beach dune ridges.
Older alluvial clays with ferruginous pisolites and feldspathic and quartz grit.
Older fixed desert soil dunes, often strongly kunkurised internally. Associated sand spreads.
Kunkur, undifferentiated according to age and origin, including crusts, sheets, calcareous loess with concretions and reworked, recent material. Coastal aeolianite.

- Red, current-bedded, often gravelly, sandy clays with thin alutite seams of coastal cliffs.
ARNDROSSAN CLAYS AND SANDROCK. Indurated, gritty, sandy mottled clays and silts with gravel bands.

- HALLETT COVE SANDSTONE. Thin sandy limestones with abundant pelocypods.
MELTON LIMESTONE. Sandy and gritty limestones and conglomeratic, cross-bedded, bryozoal limestones with *Lepidocyclina*.

- PORT WILLINGUA BEDS. Soft, bryozoal, sandy limestones of the east coast, overlying PORT JULIA, GREENSAND. Limestone at Urania. POINT TURTON LIMESTONE with *Victorites*.

- BLANCHE POINT MARLS. Yellow and pink silty sandstone with *Turritella* and *Archaeocyathus*.
QUARTZITIC SANDSTONES OF ROCKY POINT. MULDOONWURTE CLAYS. Ochreous sandy clays with lenses of shelly limestone.
Cross-bedded coarse sands with lignite of Kulpara, Price and Ardrossan.

- Boulder till with erratics derived from the south-east. Deltaic sandy claystones. Fluvio-glacial sands.

- RAMSAY LIMESTONE. Mottled dark blue and buff argillaceous limestone with *Graptolites* and *Beudanticeras*.
Red bed clastics and evaporites. Conglomerates, sedimentary breccias and arkoses of Rocky Point and Pine Point.

- PARARA LIMESTONE. Mottled dark blue and buff argillaceous limestone with *Parara* and *Archaeocyathus*.
KULPARA LIMESTONE. Grey and blue-grey limestones with *Collenia* and *Archaeocyathus* in upper part. White shales at base.

- Massive quartz conglomerates and feldspathic cross-bedded sandstones, locally passing upwards into fine-grained red sandstones and shales.

- Undifferentiated sedimentary gneisses, schists and calc-silicate rocks. Granites, pegmatites, apatite (shown by symbol +). Hornblende.
MOONTA PORPHYRY (unexposed).

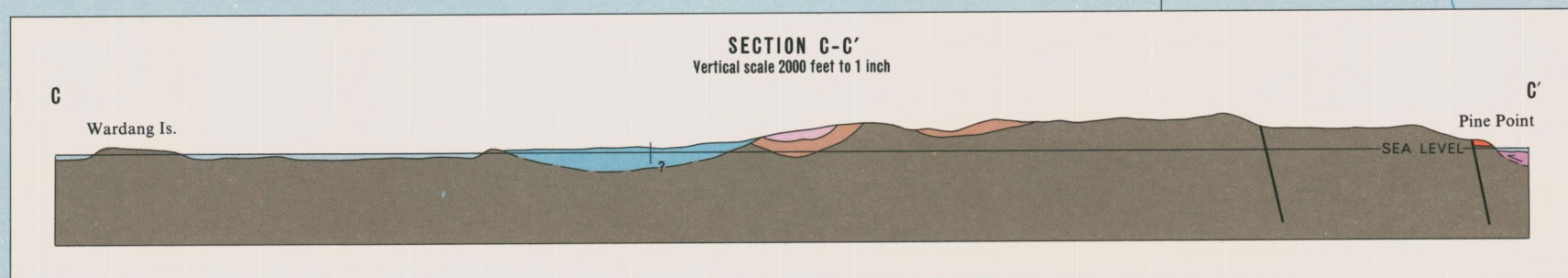
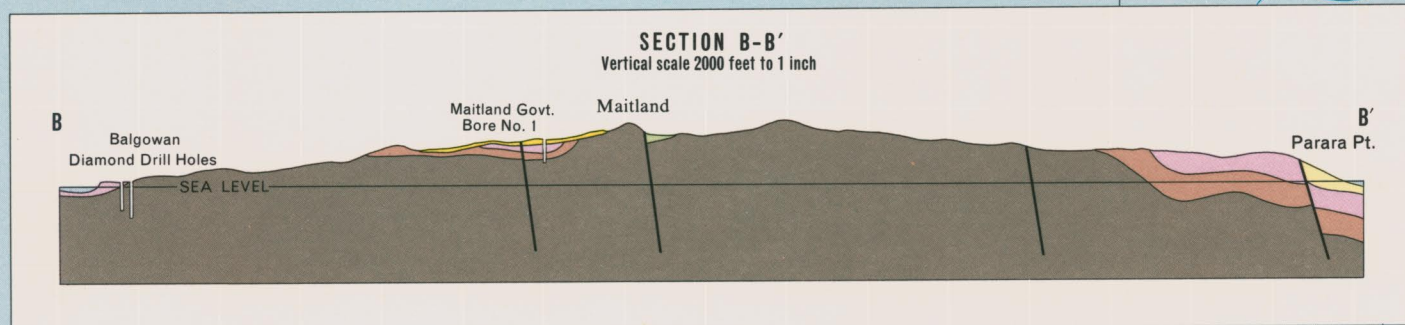
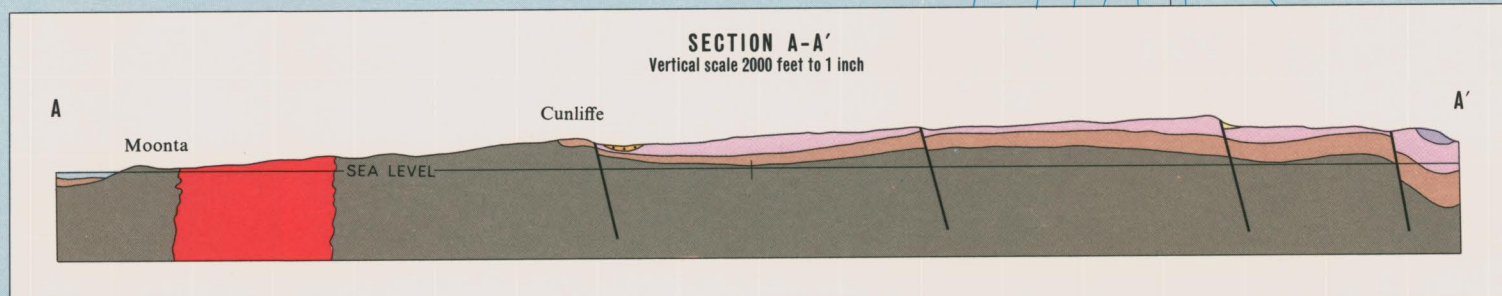
- Geological boundaries:
OBSERVED
APPROXIMATE
SUB-QUATERNARY LIMIT OF TERTIARY DEPOSITS
SUB-QUATERNARY LIMIT OF PERMIAN DEPOSITS
PROBABLE
INFERRED
SUB-QUATERNARY BOUNDARY BETWEEN PROTEROZOIC AND CAMBRIAN
PROBABLE
INFERRED
SUB-QUATERNARY BOUNDARY BETWEEN ARCHAEOAN AND PROTEROZOIC
PROBABLE
INFERRED
SUB-QUATERNARY OUTCROP OF MOONTA PORPHYRY
NORMAL FAULTS, DOWN THROW ON EAST SIDE
SCARPS FACING EAST, PROBABLY NORMAL FAULTS
BEDDINGS
STRIKE AND DIP
HORIZONTAL
VERTICAL
GNEISSOSITY, SCHISTOSITY
VERTICAL
MAIN ROAD
ROAD
TRACK
RAILWAY
EPHEMERAL STREAM
SWAMP
SALT LAKES AND LAGOONS
SUBMARINE FAN LINES (5 FATHOM INTERVAL)
CONTOURS (50 FEET INTERVAL)
SEAFLOOR CRESTS
TRIANGULATION STATION
QUARRY
BORES WITH SEQUENCE OF STRATA
MINE SHAFT OR PROSPECTING PIT
GLACIAL ERTATIC
IRON
COPPER
ALUMINITE
PHOSPHATE
PH

- Geology by A. R. CRAWFORD, B.Sc.
B. P. Webb, M.Sc., Senior Geologist
in charge of Regional Mapping
E. S. O'Driscoll, B.Sc., Chief Geologist
Topography supplied by Photogrammetric Section,
Department of Lands, South Australia.
Cartography by Geological Drafting Section,
Department of Mines, South Australia.
Compiled under the direction of T. A. Barnes, M.Sc.,
Government Geologist.
Issued under the authority of the
Honourable Sir A. Lynn McEwen, M.L.C., Minister of Mines.
Published 1960 at 1:250 000
Reprinted 1975 at 1:250 000

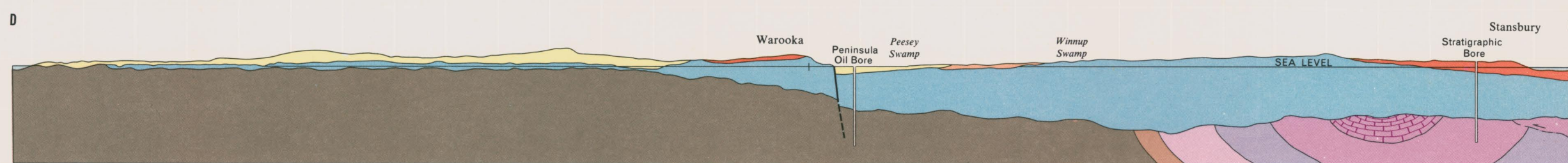
- Copies of this map may be obtained from the Geological Survey of South Australia, Department of Mines, Adelaide, or the Bureau of Mineral Resources, Geology and Geophysics, Canberra, A.C.T. Printed for the Geological Survey of South Australia as a contribution to the Geological Map Series of the Commonwealth.

- This publication is sold subject to the condition that it shall not, by way of trade, be resold, hired out, or otherwise disposed of without the publisher's consent.

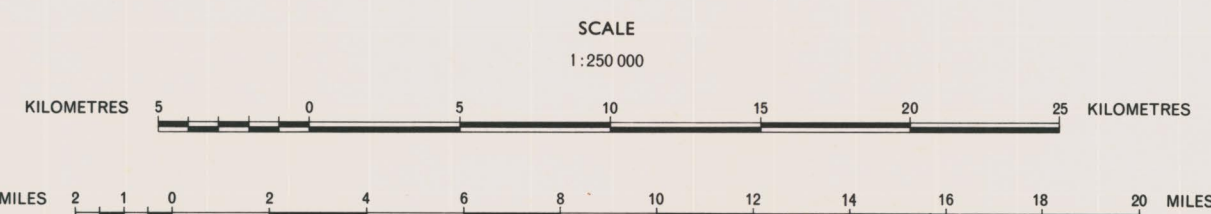
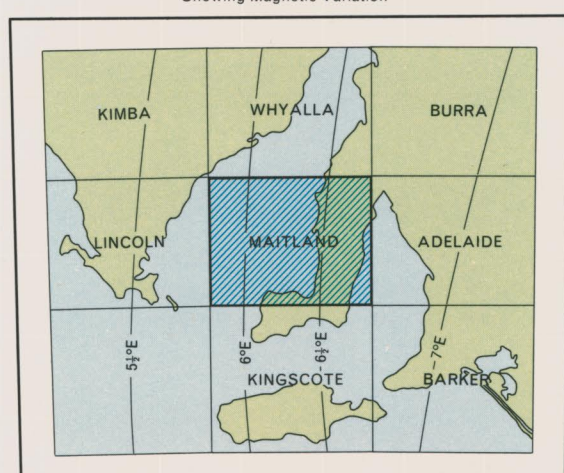
- MAITLAND
SHEET SI 53/12



SECTION D-D'
Vertical scale 2000 feet to 1 inch

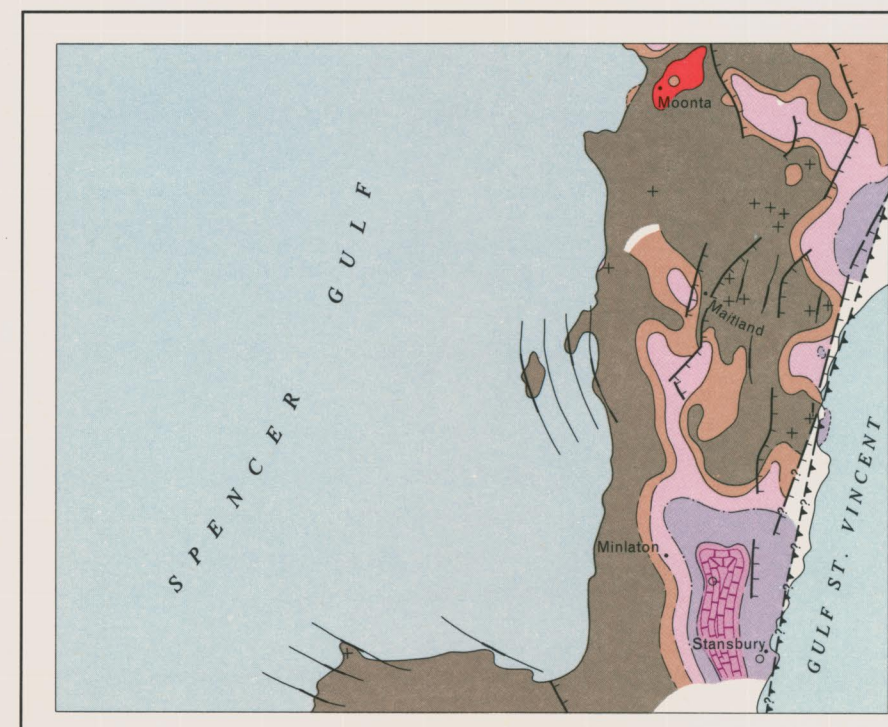


INDEX TO ADJOINING SHEETS



PRINTED IN AUSTRALIA
A. S. JAMES GOVERNMENT PRINTER
SOUTH AUSTRALIA
CROWN COPYRIGHT RESERVED

TECTONIC SKETCH



- Middle Cambrian
Lower Cambrian (Parara Limestone, clastics and red beds)
Lower Cambrian (Kulpara Limestone)
Proterozoic
Archaean
Moonta Porphyry (Intrusive)
Granites, Pegmatites
Bedding foliation of gneisses and schists
Cambrian Normal Faults or Monoclines
Post-Cambrian Pre-Permian Thrust
Stratigraphic Bore
- Geology by A. R. CRAWFORD, B.Sc.
B. P. Webb, M.Sc., Senior Geologist
in charge of Regional Mapping
E. S. O'Driscoll, B.Sc., Chief Geologist
Topography supplied by Photogrammetric Section,
Department of Lands, South Australia.
Cartography by Geological Drafting Section,
Department of Mines, South Australia.
Compiled under the direction of T. A. Barnes, M.Sc.,
Government Geologist.
Issued under the authority of the
Honourable Sir A. Lynn McEwen, M.L.C., Minister of Mines.
Published 1960 at 1:250 000
Reprinted 1975 at 1:250 000
- Copies of this map may be obtained from the Geological Survey of South Australia, Department of Mines, Adelaide, or the Bureau of Mineral Resources, Geology and Geophysics, Canberra, A.C.T. Printed for the Geological Survey of South Australia as a contribution to the Geological Map Series of the Commonwealth.
- This publication is sold subject to the condition that it shall not, by way of trade, be resold, hired out, or otherwise disposed of without the publisher's consent.