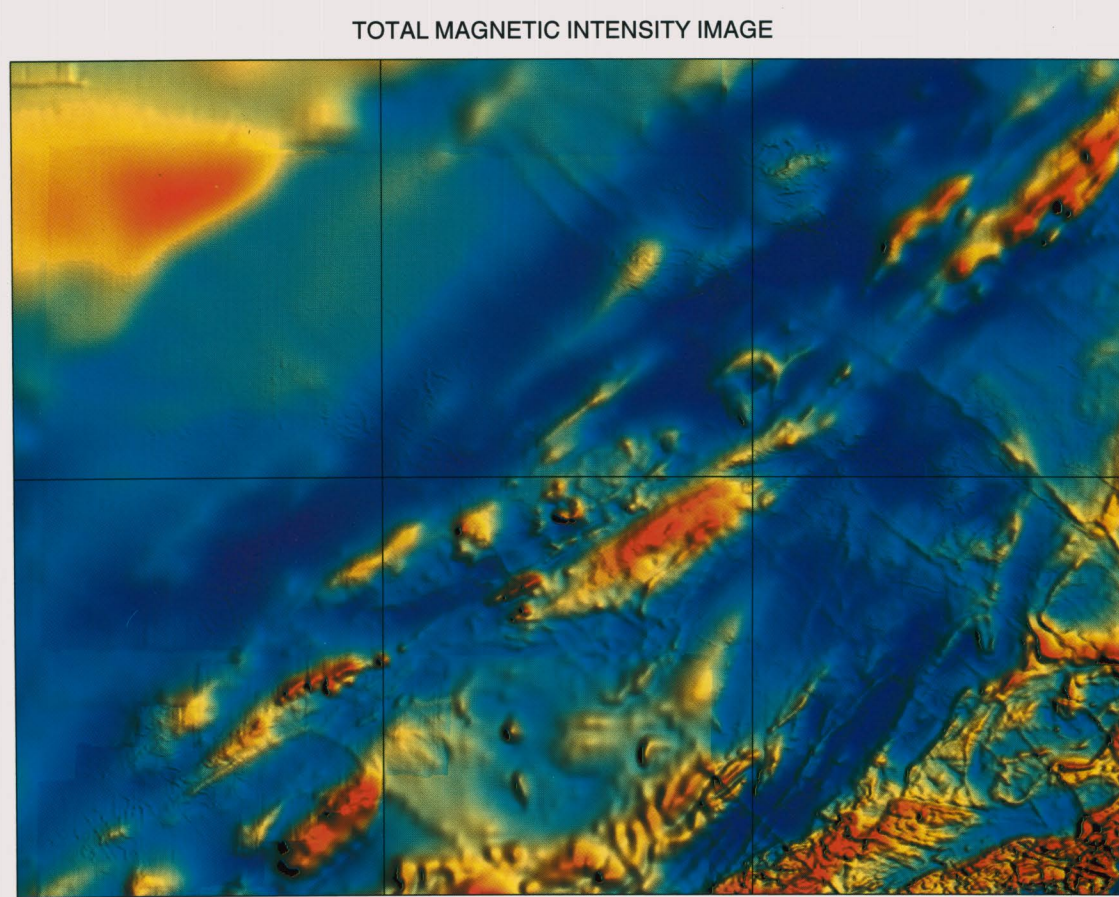


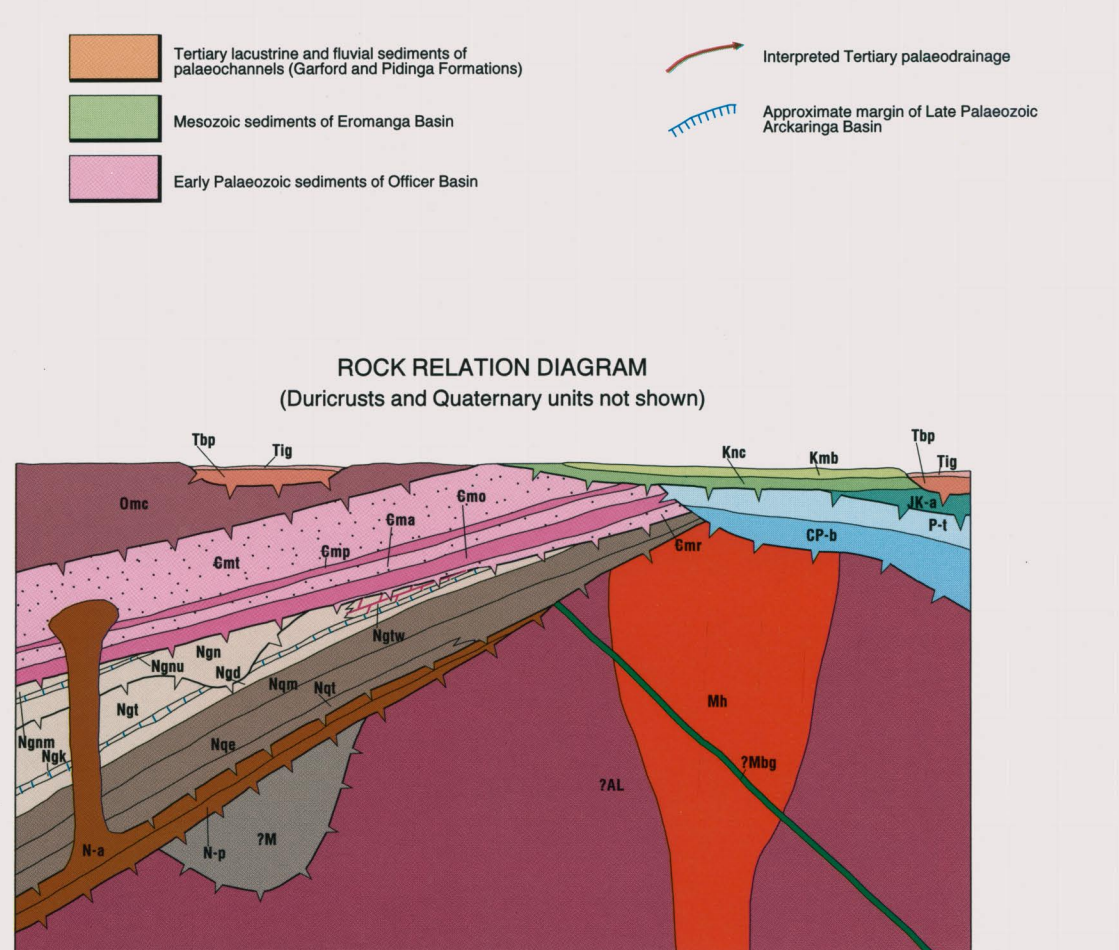
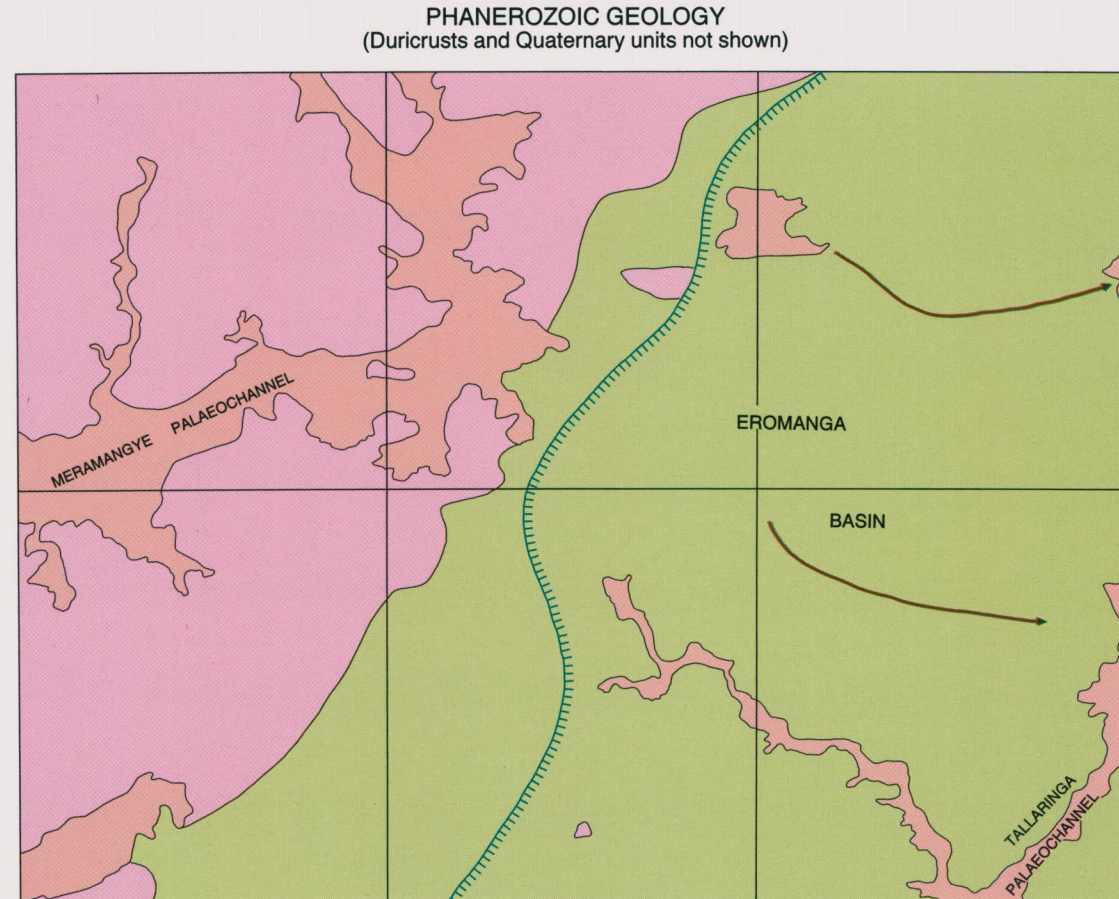
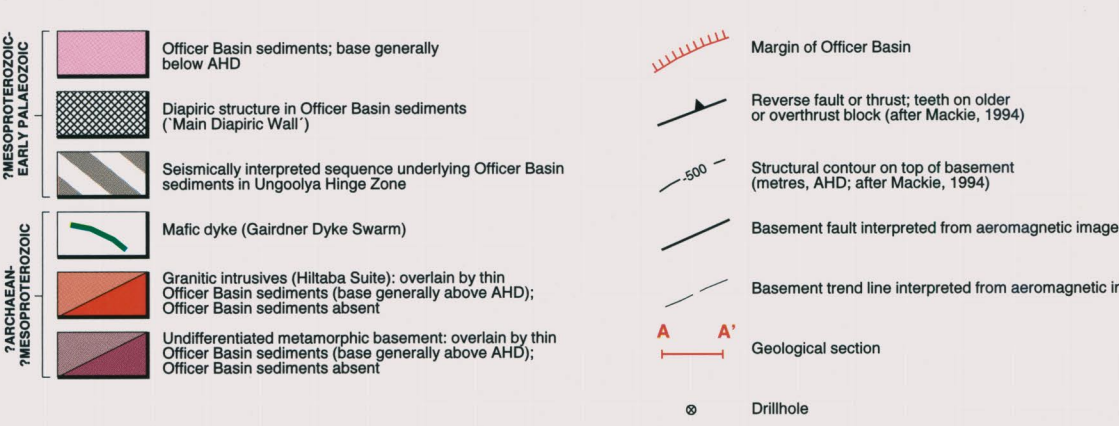
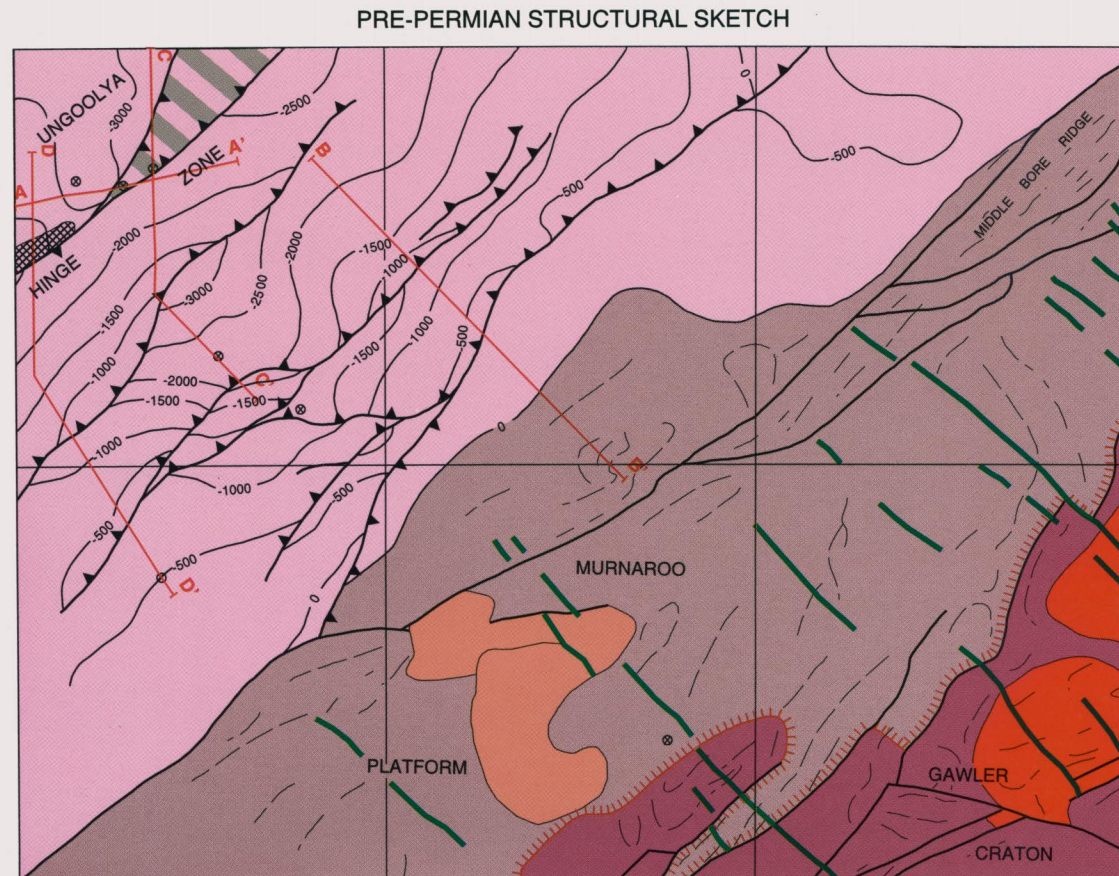


REFERENCE

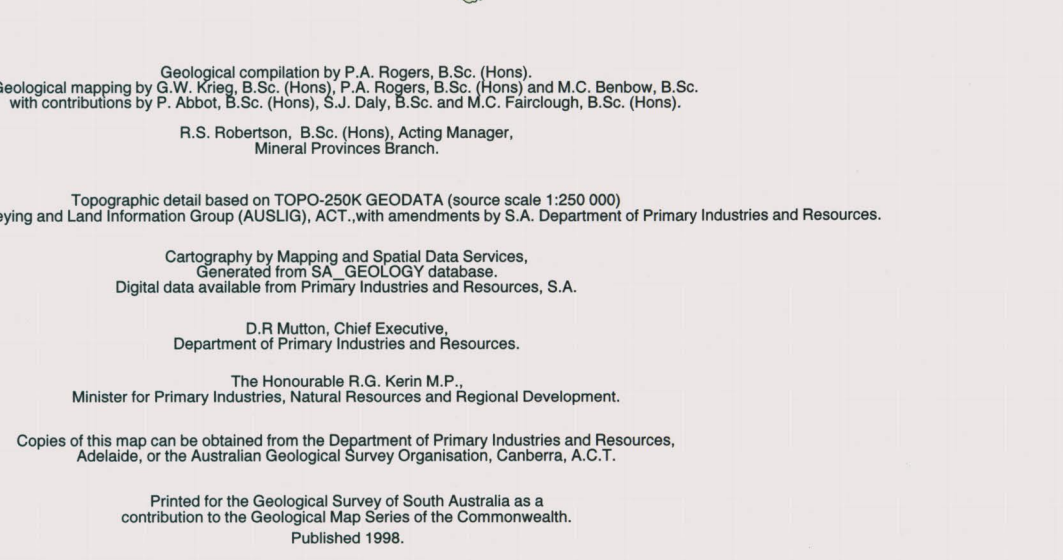
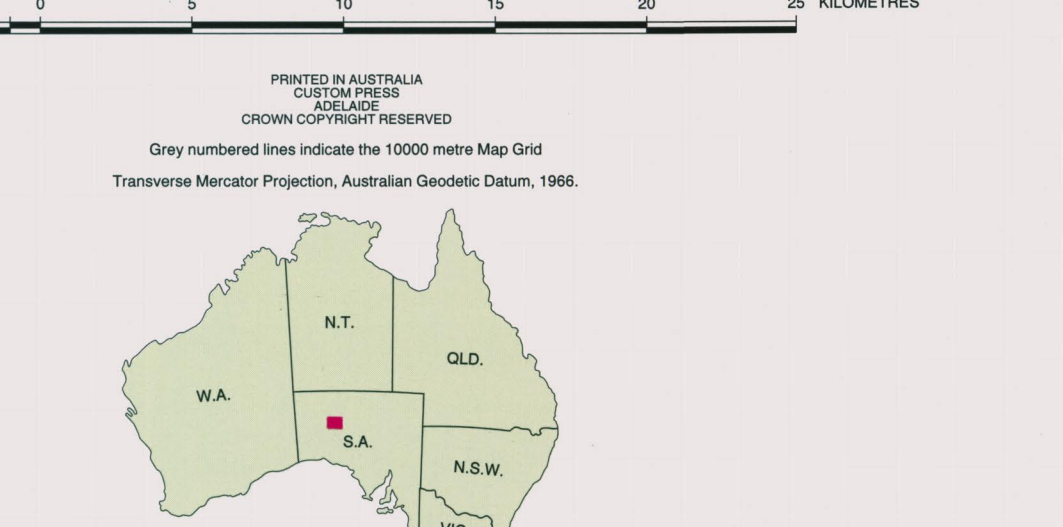
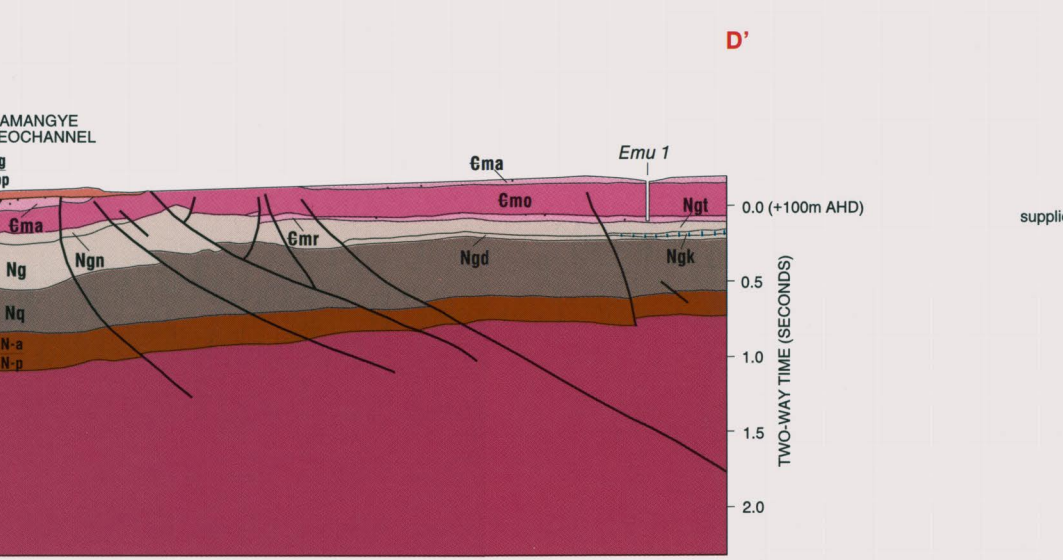
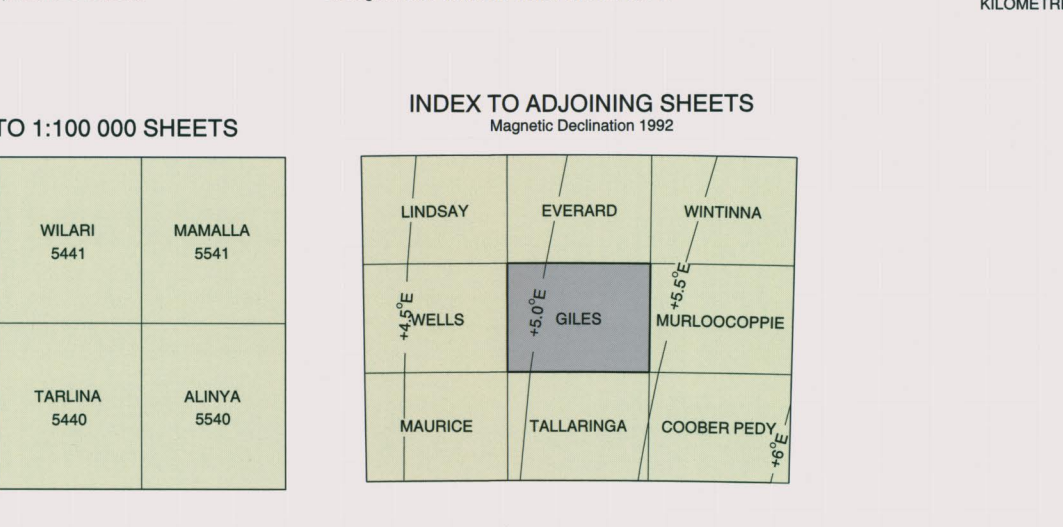
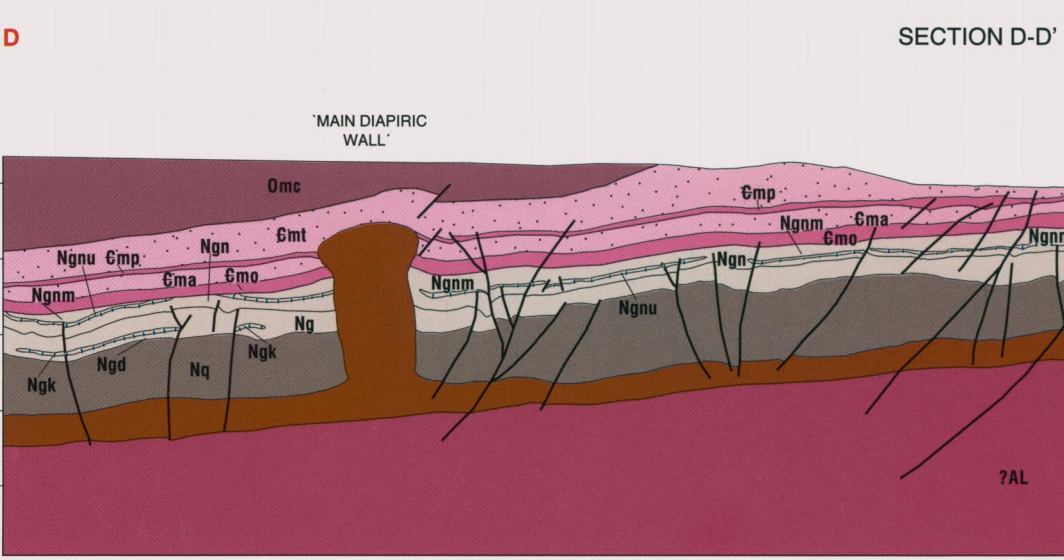
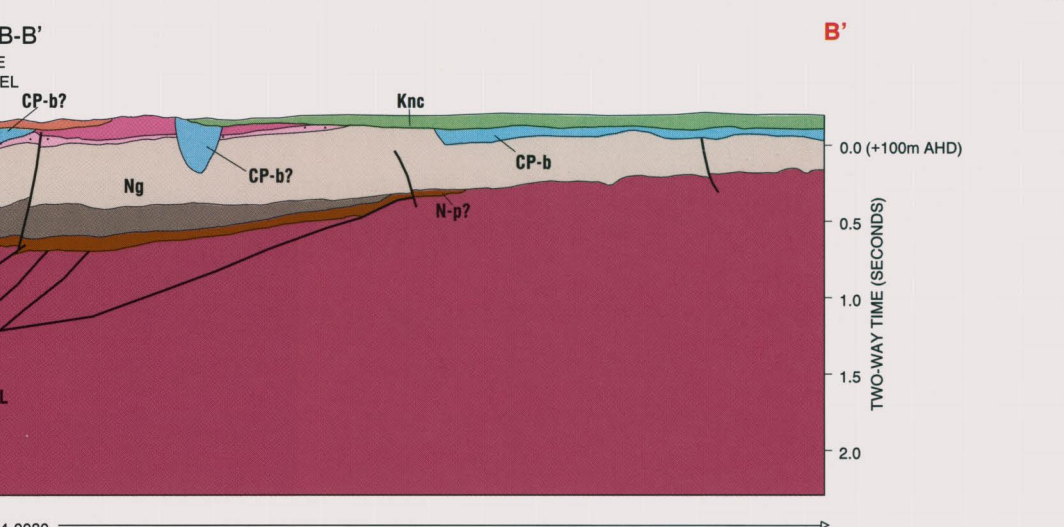
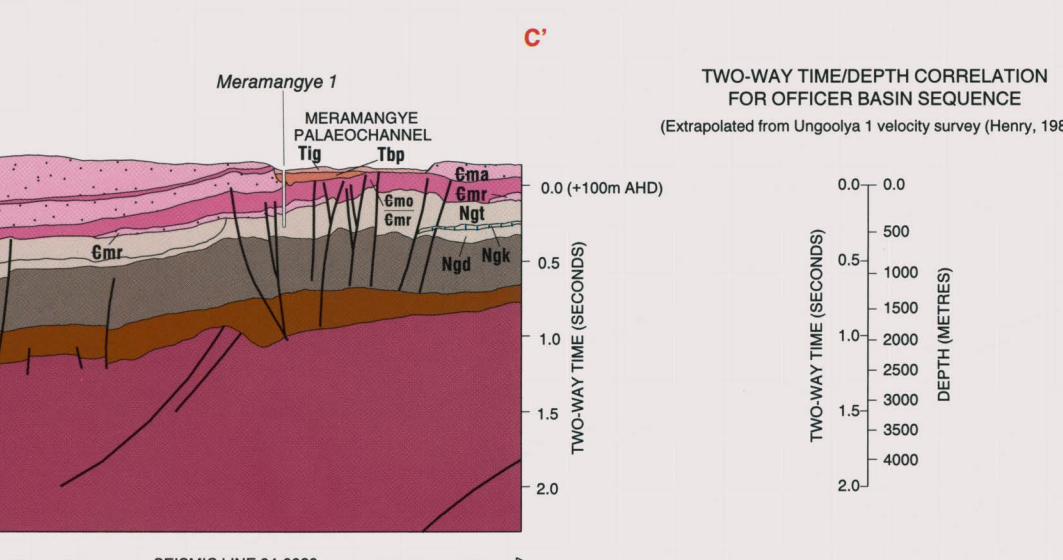
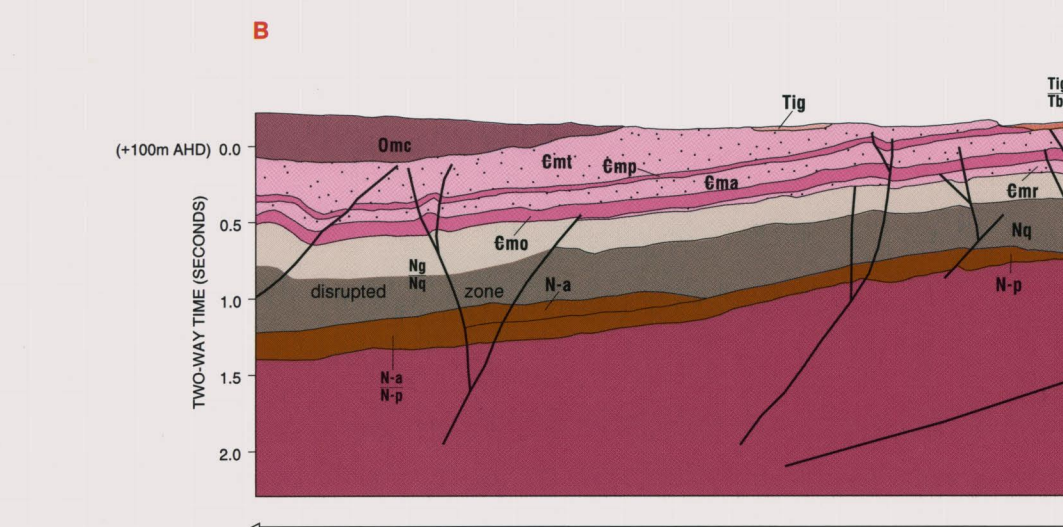
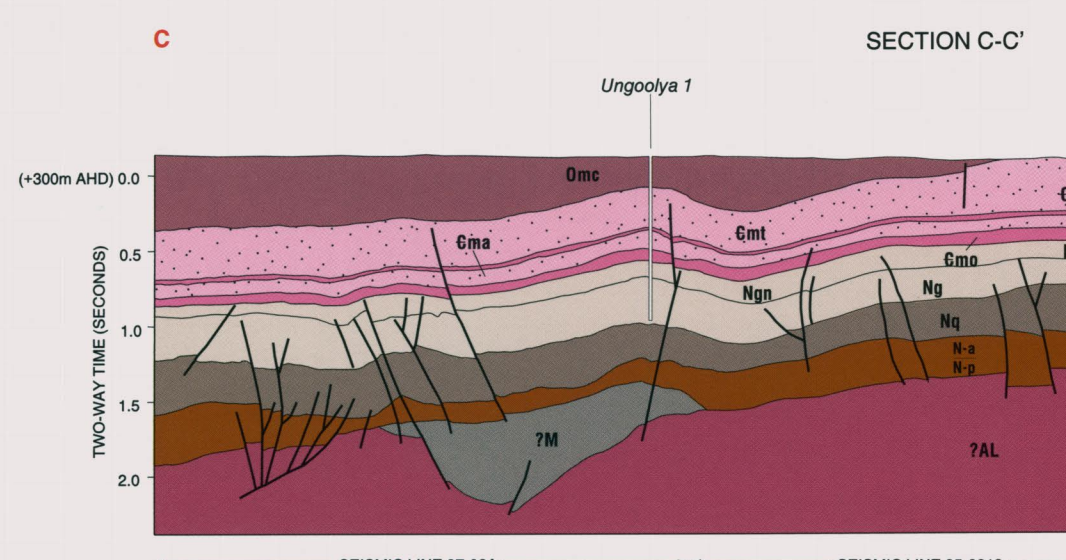
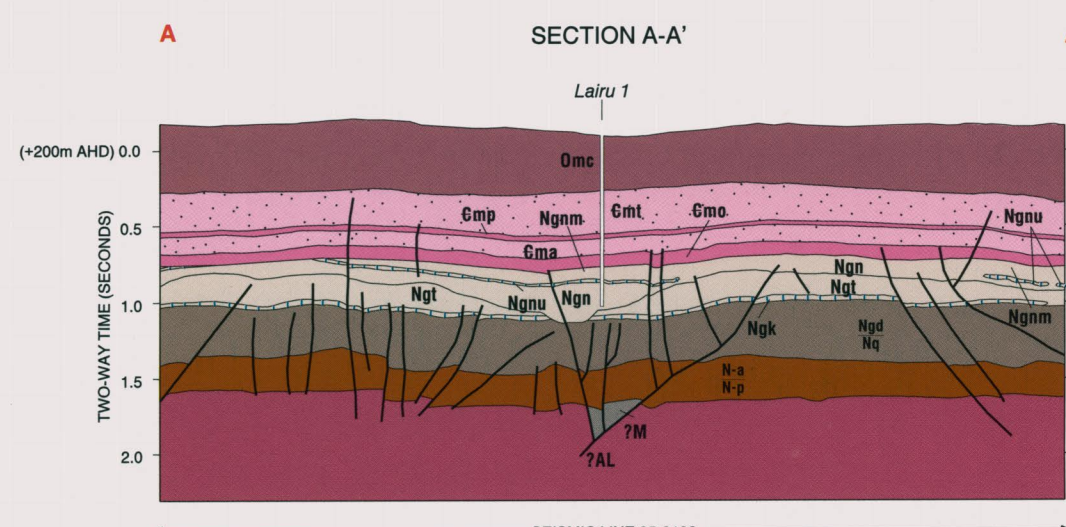
QUATERNARY	Q ₁	Clay, silt, sand and gypsiferous sediment of playa lakes and claypans.	DURICRUSTS	Nodular, sheet and rubby calcrite, developed mainly on Garford Formation in palaeochannels.
QUATERNARY	Q ₂	Orange-brown quartz sand of The Great Victoria Desert dunefield.		
QUATERNARY	Q ₃	Undifferentiated surficial deposits. Includes ironstone (maghemite) gravel spreads adjacent to and overlying ferronites of the Camadina Surface, sand sheets with scattered low dunes, marginal deposits and patchy calcrite.		
QUATERNARY	Q ₄	Thin overlays on older units.		
CANADIAN	Q ₅	Gypsum-quartz sand and gypsiferous crusts of lunettes.		
TERTIARY	T ₁	MERAMANGIE AND TALLARINGA PALAEOCHANNELS		
TERTIARY	T ₂	Garford Formation: Limestone and grey-green clayey sandstone and sandy claystone.		
TERTIARY	T ₃	Pindiga Formation: Green-grey, fine-grained quartz sandstone to grey, siltstone and claystone.		
TERTIARY	T ₄	EROMANGA BASIN		
TERTIARY	T ₅	Bulldog Shale: Kadiakian and porcellanite claystone with layers of silt to very fine sand; Bulldog Shale: Kadiakian and porcellanite claystone with layers of silt to very fine sand; Bulldog Shale: Kadiakian and porcellanite claystone with layers of silt to very fine sand.		
TERTIARY	T ₆	EROMANGA BASIN		
TERTIARY	T ₇	EROMANGA BASIN		
TERTIARY	T ₈	EROMANGA BASIN		
TERTIARY	T ₉	EROMANGA BASIN		
TERTIARY	T ₁₀	EROMANGA BASIN		
TERTIARY	T ₁₁	EROMANGA BASIN		
TERTIARY	T ₁₂	EROMANGA BASIN		
TERTIARY	T ₁₃	EROMANGA BASIN		
TERTIARY	T ₁₄	EROMANGA BASIN		
TERTIARY	T ₁₅	EROMANGA BASIN		
TERTIARY	T ₁₆	EROMANGA BASIN		
TERTIARY	T ₁₇	EROMANGA BASIN		
TERTIARY	T ₁₈	EROMANGA BASIN		
TERTIARY	T ₁₉	EROMANGA BASIN		
TERTIARY	T ₂₀	EROMANGA BASIN		
TERTIARY	T ₂₁	EROMANGA BASIN		
TERTIARY	T ₂₂	EROMANGA BASIN		
TERTIARY	T ₂₃	EROMANGA BASIN		
TERTIARY	T ₂₄	EROMANGA BASIN		
TERTIARY	T ₂₅	EROMANGA BASIN		
TERTIARY	T ₂₆	EROMANGA BASIN		
TERTIARY	T ₂₇	EROMANGA BASIN		
TERTIARY	T ₂₈	EROMANGA BASIN		
TERTIARY	T ₂₉	EROMANGA BASIN		
TERTIARY	T ₃₀	EROMANGA BASIN		
TERTIARY	T ₃₁	EROMANGA BASIN		
TERTIARY	T ₃₂	EROMANGA BASIN		
TERTIARY	T ₃₃	EROMANGA BASIN		
TERTIARY	T ₃₄	EROMANGA BASIN		
TERTIARY	T ₃₅	EROMANGA BASIN		
TERTIARY	T ₃₆	EROMANGA BASIN		
TERTIARY	T ₃₇	EROMANGA BASIN		
TERTIARY	T ₃₈	EROMANGA BASIN		
TERTIARY	T ₃₉	EROMANGA BASIN		
TERTIARY	T ₄₀	EROMANGA BASIN		
TERTIARY	T ₄₁	EROMANGA BASIN		
TERTIARY	T ₄₂	EROMANGA BASIN		
TERTIARY	T ₄₃	EROMANGA BASIN		
TERTIARY	T ₄₄	EROMANGA BASIN		
TERTIARY	T ₄₅	EROMANGA BASIN		
TERTIARY	T ₄₆	EROMANGA BASIN		
TERTIARY	T ₄₇	EROMANGA BASIN		
TERTIARY	T ₄₈	EROMANGA BASIN		
TERTIARY	T ₄₉	EROMANGA BASIN		
TERTIARY	T ₅₀	EROMANGA BASIN		
TERTIARY	T ₅₁	EROMANGA BASIN		
TERTIARY	T ₅₂	EROMANGA BASIN		
TERTIARY	T ₅₃	EROMANGA BASIN		
TERTIARY	T ₅₄	EROMANGA BASIN		
TERTIARY	T ₅₅	EROMANGA BASIN		
TERTIARY	T ₅₆	EROMANGA BASIN		
TERTIARY	T ₅₇	EROMANGA BASIN		
TERTIARY	T ₅₈	EROMANGA BASIN		
TERTIARY	T ₅₉	EROMANGA BASIN		
TERTIARY	T ₆₀	EROMANGA BASIN		
TERTIARY	T ₆₁	EROMANGA BASIN		
TERTIARY	T ₆₂	EROMANGA BASIN		
TERTIARY	T ₆₃	EROMANGA BASIN		
TERTIARY	T ₆₄	EROMANGA BASIN		
TERTIARY	T ₆₅	EROMANGA BASIN		
TERTIARY	T ₆₆	EROMANGA BASIN		
TERTIARY	T ₆₇	EROMANGA BASIN		
TERTIARY	T ₆₈	EROMANGA BASIN		
TERTIARY	T ₆₉	EROMANGA BASIN		
TERTIARY	T ₇₀	EROMANGA BASIN		
TERTIARY	T ₇₁	EROMANGA BASIN		
TERTIARY	T ₇₂	EROMANGA BASIN		
TERTIARY	T ₇₃	EROMANGA BASIN		
TERTIARY	T ₇₄	EROMANGA BASIN		
TERTIARY	T ₇₅	EROMANGA BASIN		
TERTIARY	T ₇₆	EROMANGA BASIN		
TERTIARY	T ₇₇	EROMANGA BASIN		
TERTIARY	T ₇₈	EROMANGA BASIN		
TERTIARY	T ₇₉	EROMANGA BASIN		
TERTIARY	T ₈₀	EROMANGA BASIN		
TERTIARY	T ₈₁	EROMANGA BASIN		
TERTIARY	T ₈₂	EROMANGA BASIN		
TERTIARY	T ₈₃	EROMANGA BASIN		
TERTIARY	T ₈₄	EROMANGA BASIN		
TERTIARY	T ₈₅	EROMANGA BASIN		
TERTIARY	T ₈₆	EROMANGA BASIN		
TERTIARY	T ₈₇	EROMANGA BASIN		
TERTIARY	T ₈₈	EROMANGA BASIN		
TERTIARY	T ₈₉	EROMANGA BASIN		
TERTIARY	T ₉₀	EROMANGA BASIN		
TERTIARY	T ₉₁	EROMANGA BASIN		
TERTIARY	T ₉₂	EROMANGA BASIN		
TERTIARY	T ₉₃	EROMANGA BASIN		
TERTIARY	T ₉₄	EROMANGA BASIN		
TERTIARY	T ₉₅	EROMANGA BASIN		
TERTIARY	T ₉₆	EROMANGA BASIN		
TERTIARY	T ₉₇	EROMANGA BASIN		
TERTIARY	T ₉₈	EROMANGA BASIN		
TERTIARY	T ₉₉	EROMANGA BASIN		
TERTIARY	T ₁₀₀	EROMANGA BASIN		



The Total Magnetic Intensity image has been compiled from aeromagnetic data from the Department of Primary Industries and Resources (South Australia) and the Department of Primary Industries and Resources (Victoria). The data was collected by the following organisations: BHP (1985), Comco, AGSO and MESA (1982). Aeromagnetic data has been merged, gridded and image processed by Mineral Resources Department of Primary Industries and Resources.



Note: Surface profiles on geological sections are not to scale



Note: Surface profiles on geological sections are not to scale