

ALBERGA

GEOLOGICAL SURVEY OF SOUTH AUSTRALIA
DEPARTMENT OF MINES ADELAIDE

FIRST EDITION 1959



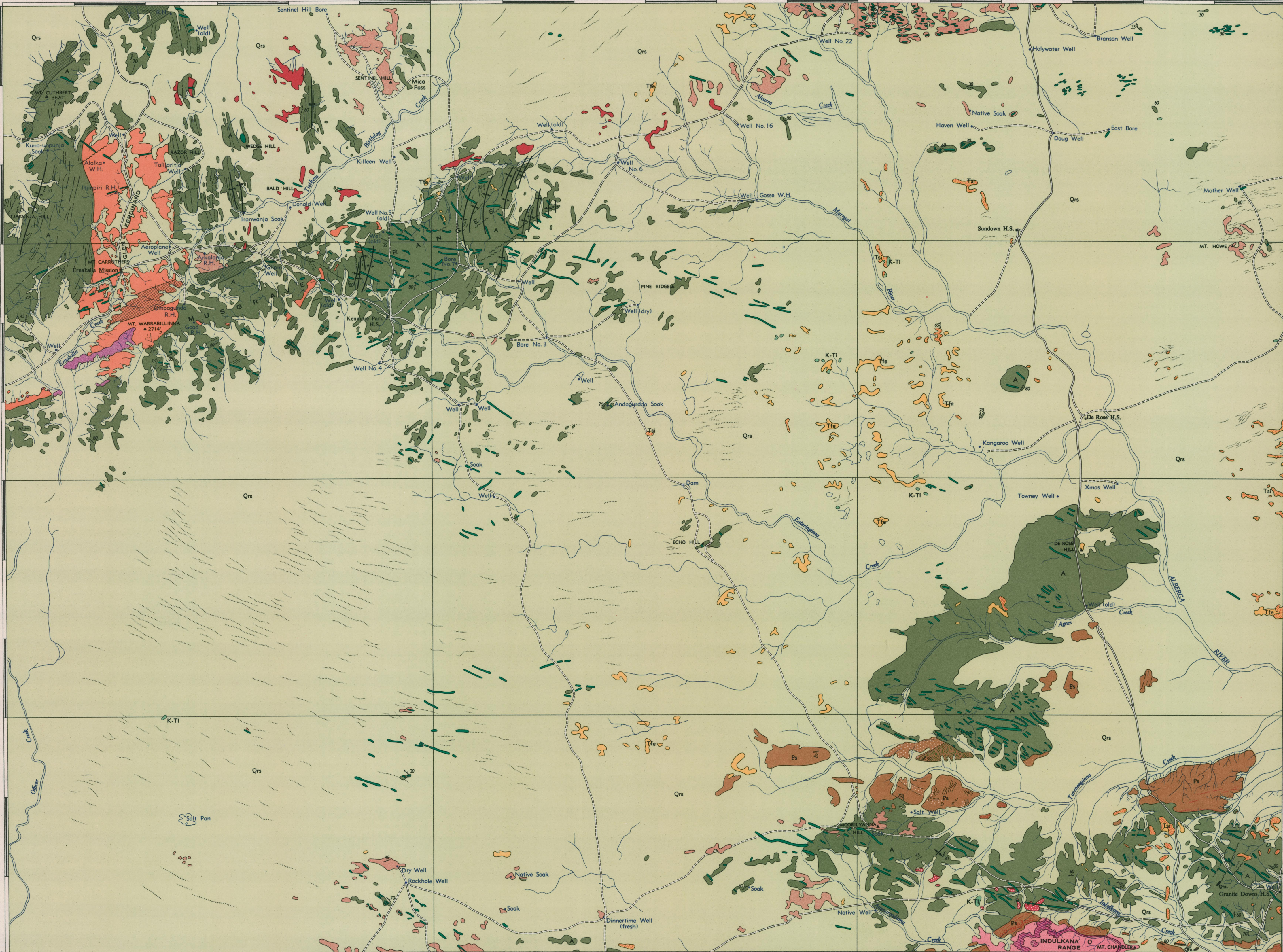
REFERENCE

- QUATERNARY**
- Qrs** Alluvial deposits.
Sand plain and sand dunes.
- CAINOZOIC**
- Tertiary**
- Tfe** Laterite: Heavily lateritised sands, shales and granitic rocks with underlying bleached and mottled horizons usually interstratified with porcellanite.
- Tsi** Porcellanite: Silicified and opalised sands, quartzites and shales.
- K-Ti** Sands, clays and gravels of uncertain age usually preserved beneath cappings of porcellanite or laterite.
- PALEOZOIC**
- Ordovician**
- O** Mt. Chandler sandstone: Predominantly massive sandstones and quartzites, red and pink massive bedded limestone higher up in the sequence with thin conglomerate and shaly bands near basal unconformity.
- PROTEROZOIC**
- Adelaide System**
- Ps** Sturtian Series: Undifferentiated: Purple green and grey slates and shales with minor quartzites and dolomites.
Purple and green slates.
Chambers Bluff Tillite: Hematitic and calcareous tillite, tillitic sandstones and tillitic slates, minor quartzites.
Grey shales with minor quartzites, feldspathic quartzites, calcareous shales, dolomites.
- Archaean**
- A** Arkose grits with minor intercalations of conglomerate, slate, sandstone.
Moorylanna Conglomerate: Predominantly conglomerate, tillitic conglomerate with minor purple slates, quartzites.
- Quartz reef**
- Younger intrusives: Micro-gabbro**
- Micro-norite**
- Micro adamellite, microgranite**
- Biotite and hornblende adamellites**
- Hypersthene adamellite**
- Aplite of Indulkana shear zone**

- GEOLOGICAL BOUNDARIES**
- OBSERVED
APPROXIMATE
- FAULTS**
- OBSERVED
APPROXIMATE
- TECTONIC BRECCIA**
- BEDDING**
- STRIKE AND DIP
STRUCTURE FORM LINES
GNEISSOSITY, SCHISTOSITY
VERTICAL
SYNCLINE
ANTICLINE
- MAIN ROAD**
ROAD
TRACK
TRIANGULATION STATION
RIVER OR CREEK
WELL OR BORE
DAM

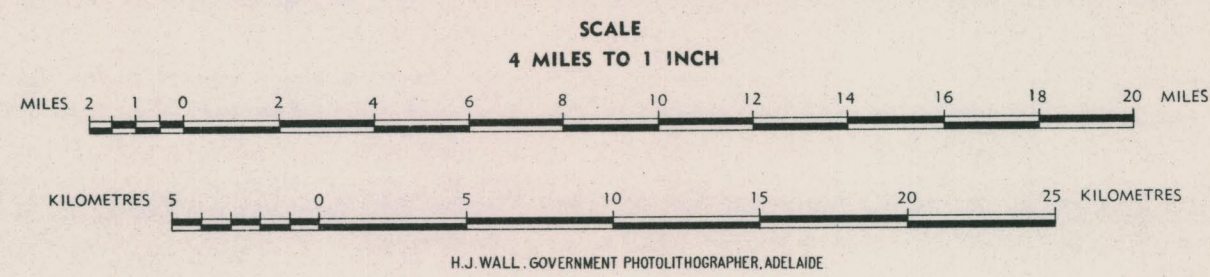
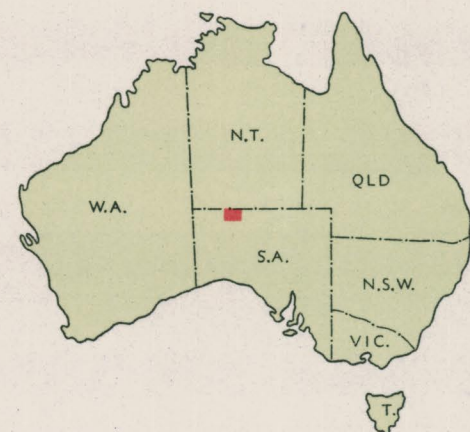
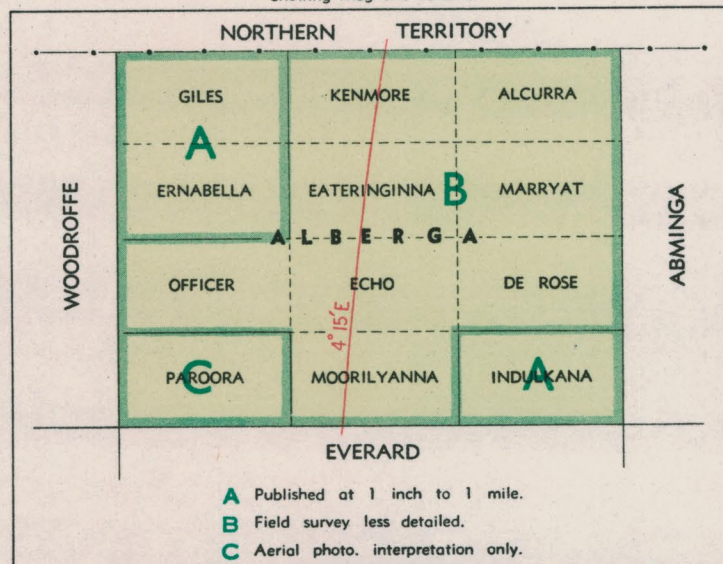
AUSTRALIA 1 : 253,440
Map corners from data available at publication

4 MILE GEOLOGICAL SERIES SHEET G 53-9 ZONE 4



GEOLOGICAL RELIABILITY DIAGRAM AND INDEX TO ADJOINING SHEETS

Showing Magnetic variation



TECTONIC SKETCH



- Cainozoic.....
Paleozoic.....
Proterozoic.....
Archaean.....
Chemoklinic batholith.....
Older granites.....
Younger intrusives.....
Tectonic breccia.....
Anticline.....
Fault.....

Geology by R. C. Spragg, M.Sc., B. Wilson, B.Sc.,
R. P. Coats, B.Sc.
B. P. Webb, M.Sc., Senior Geologist in charge of
Regional Map preparation
E. S. O'Driscoll, B.Sc., Chief Geologist.
Base map and cartography by Geological Drafting
Section, Dept. of Mines, South Aust.
Compiled under the direction of T. A. Barnes, M.Sc.,
Government Geologist.
Issued under the Authority of the
Honourable Sir A. Lyell McEwin, M.L.C.,
Minister of Mines.
Published 1959.

Copies of this map may be obtained from the Geological
Survey of South Australia, Department of Mines,
Adelaide, or the Bureau of Mineral Resources, Geology
and Geophysics, Canberra, A.C.T. Printed for the
Geological Survey of South Australia as a contribu-
tion to the 4 Mile Geological Map Series of the
Commonwealth.

ALBERGA
SHEET G 53-9